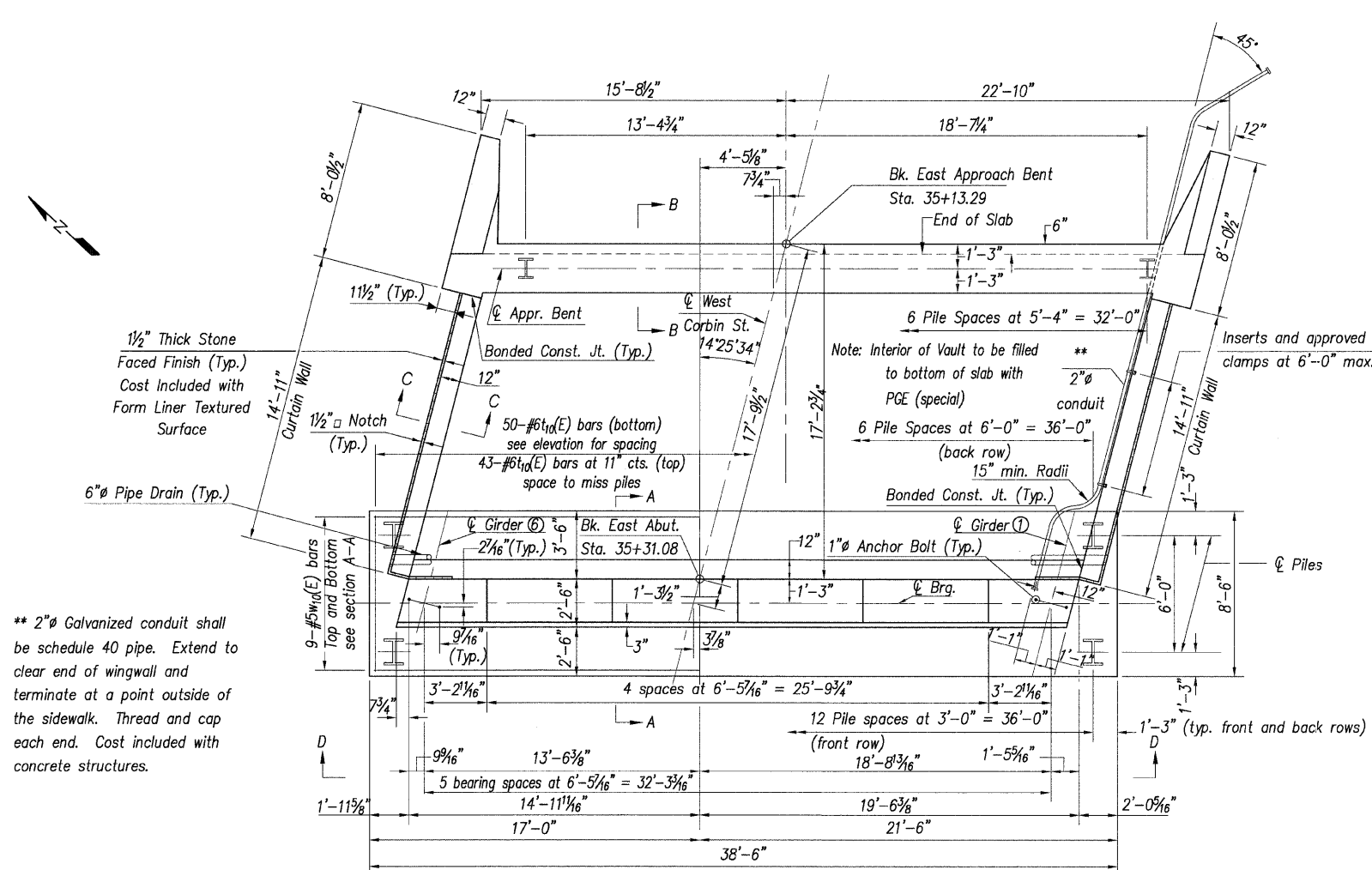
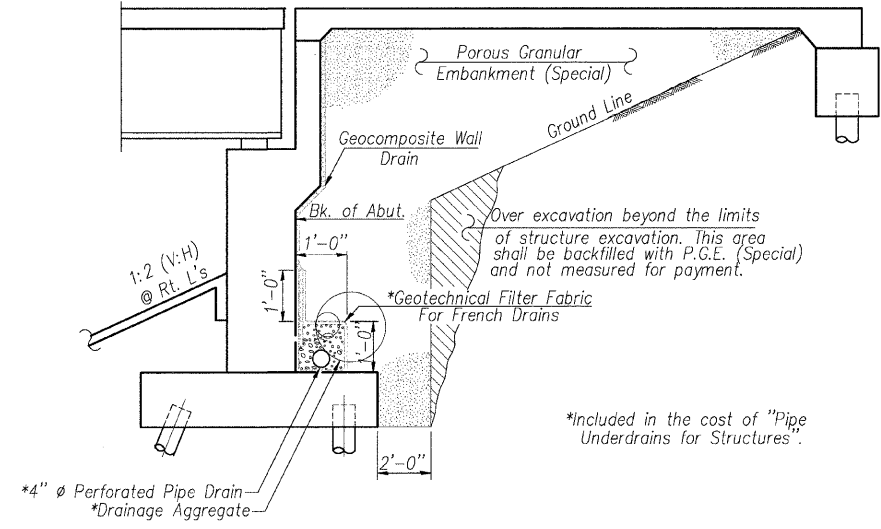


Contract # 97351



PLAN

\*\* 2" Galvanized conduit shall be schedule 40 pipe. Extend to clear end of wingwall and terminate at a point outside of the sidewalk. Thread and cap each end. Cost included with concrete structures.



SECTION THRU ABUTMENT

(Horiz. dim. @ Rt. 's)

Note: All drainage system components shall extend parallel to the abutment back wall through a formed hole in each curtain wall. The pipe shall extend until intersecting the side slopes. The pipes shall drain into concrete headwalls. (See Article 601.05 of the Standard Specifications and Highway Standard 601101).

NOTES

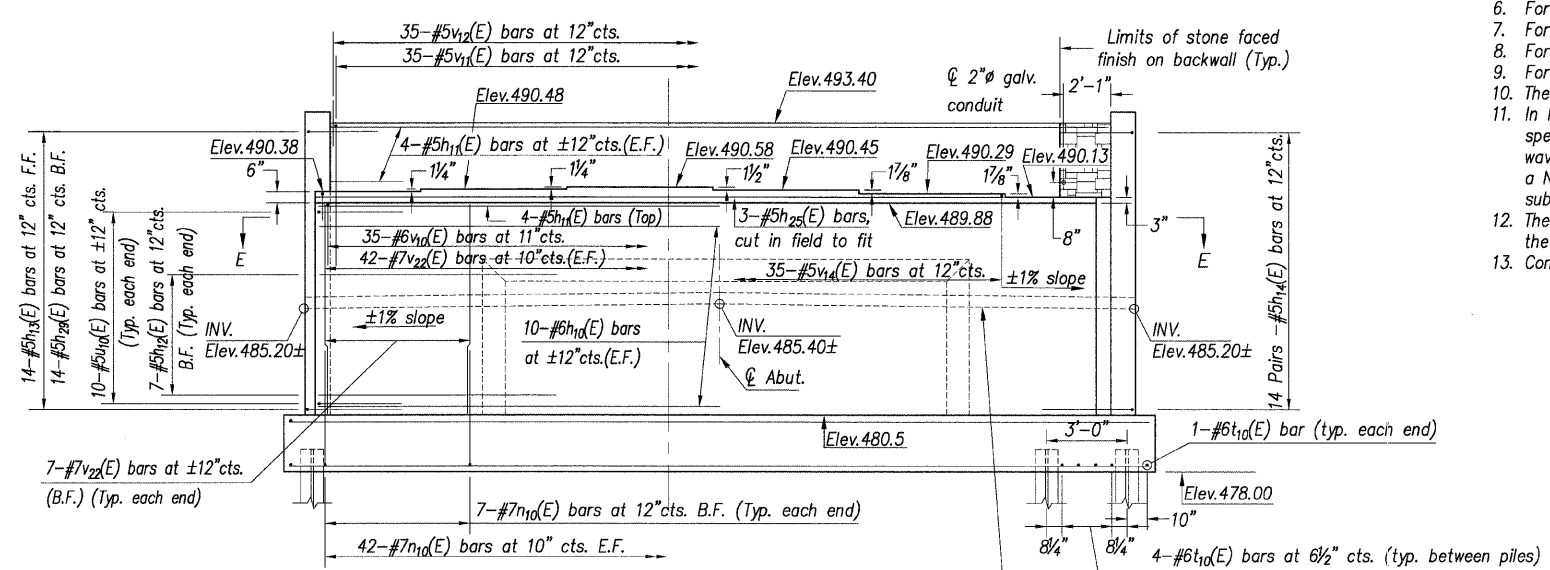
- Space reinforcement in cap to miss anchor bolts.
- Reinforcement bars designated (E) shall be epoxy coated.
- F.F. denotes Front Face  
B.F. denotes Back Face  
E.F. denotes Each Face
- For Bill of Material see Sheet No. 23.
- For Section A-A see Sheet No. 21.
- For Sections B-B, C-C and E-E see Sheet No. 22.
- For additional sections and elevations see Sheet Nos. 21 and 22.
- For random width board texture and stone faced finish details see Special Provisions.
- For Pile details see Sheet No. 25.
- The steel H-Piles shall be according to AASHTO M270 Grade 50.
- In lieu of the hammer selection criteria and use of the FHWA Modified Gates formula specified in section 512 of the Standard Specifications, the Contractor shall conduct a wave equation analysis to establish the driving criteria at all pile foundations which specify a Nominal Required Bearing above 600 kips. The analysis and calculations shall be submitted to the Engineer for approval.
- The test piles shall be driven to 110 percent of the Nominal Required Bearing indicated in the pile data information.
- Concrete Sealer shall be applied to horizontal surface of bearing seats.

ABUT.-PILE DATA

Type:	Steel HP12x74
Nominal Required Bearing	589 kips
Allowable Resistance Available	84 kips
Est. Length:	53 ft
No. Production Piles:	19
No. Test Piles:	1
N.S.F. Allowance =	±114 kips

APPR. BENT-PILE DATA

Type:	Steel HP12x84
Nominal Required Bearing	664 kips
Allowable Resistance Available	84 kips
Est. Length:	64 ft
No. Production Piles:	6
No. Test Piles:	1
N.S.F. Allowance =	±128 kips



VIEW D-D

A 6" Diameter Perforated Drain Pipe shall be situated within an approximate 2'-0" x 2'-0" area of Porous Granular Embankment with a gradation of CA-5 OR CA-7. The 2'-0" X 2'-0" area shall be wrapped completely in Geotechnical Fabric for French Drains. Extend the 6" diameter pipe through a formed hole in each Curtain Wall thus allowing any water accumulating inside the vault to discharge at the corners of the Vaulted Abutments.

DESIGNED	T.M.M.
CHECKED	C.M.W.
DRAWN	B.D.M./S.H.K.
CHECKED	C.M.W.

**Hoelscher Engineering, P.C.**  
 11 Executive Drive Suite 12  
 Fairview Heights, Illinois 62208  
 (618)624-8610 FAX: (618)624-8611

REVISIONS	
NAME	DATE

ILLINOIS DEPARTMENT OF TRANSPORTATION  
 EAST ABUTMENT DETAILS  
 WEST CORBIN STREET OVER F.A.P. 310 (IL-255)  
 F.A.U. 8959 SECTION 05-00016-03-BR  
 MADISON COUNTY  
 STATION 36+23.37  
 STRUCTURE NO. 060-6851