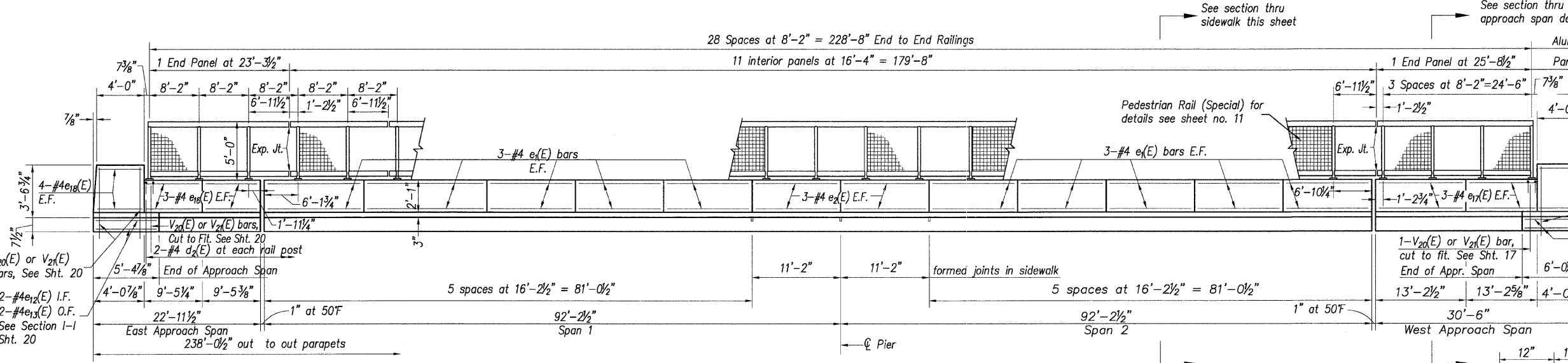
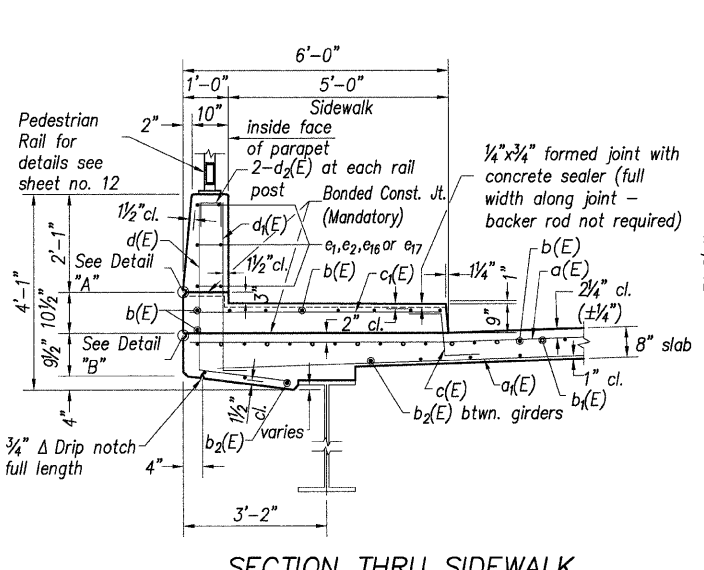


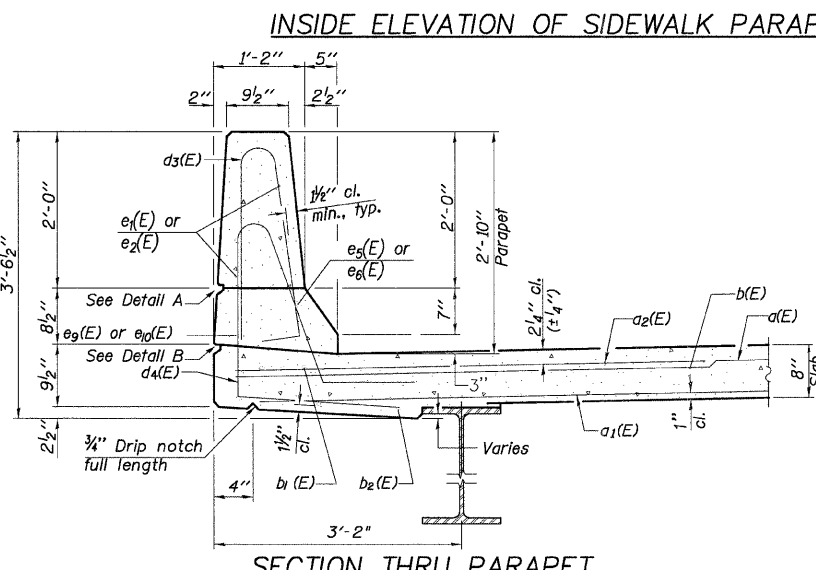
INSIDE ELEVATION OF PARAPET



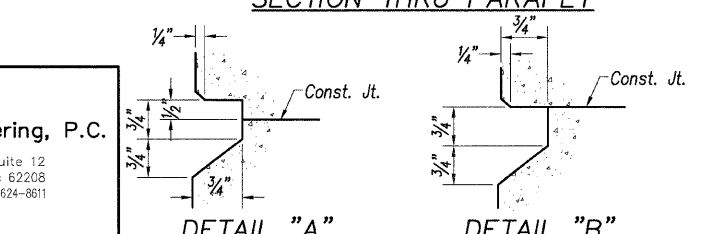
INSIDE ELEVATION OF SIDEWALK PARAPET



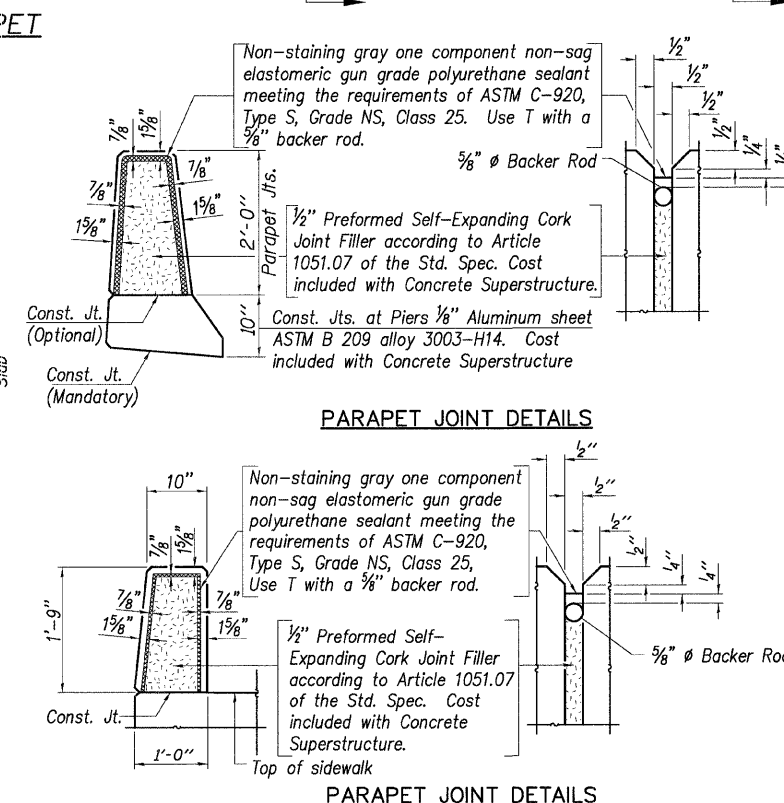
SECTION THRU SIDEWALK



SECTION THRU PARAPET



DETAIL "A" DETAIL "B"



PARAPET JOINT DETAILS

PARAPET JOINT DETAILS

BILL OF MATERIAL

Bar	No.	Size	Length	Shape
a(E)	246	#5	37'-4"	
a2(E)	222	#5	36'-4"	
a3(E)	123	#6	6'-0"	
a4(E)	30	#5	7'-4"	
b(E)	329	#5	28'-2"	
b2(E)	102	#6	20'-6"	
b3(E)	248	#5	24'-11"	
c(E)	185	#5	2'-5"	
c2(E)	184	#5	5'-9"	
d(E)	185	#5	5'-7"	
d2(E)	185	#6	4'-5"	
d3(E)	56	#4	2'-0"	
d4(E)	262	#5	5'-7"	
d5(E)	202	#5	7'-11"	
e(E)	14	#4	15'-0"	
e2(E)	130	#4	15'-11"	
e3(E)	26	#4	10'-11"	
e4(E)	14	#4	11'-2"	
e5(E)	1	#8	30'-3"	
e6(E)	6	#8	30'-2"	
e7(E)	2	#8	10'-11"	
e8(E)	1	#8	22'-8"	
e9(E)	1	#4	30'-3"	
e10(E)	6	#4	27'-10"	
e11(E)	2	#4	10'-11"	
e12(E)	1	#4	22'-8"	
e13(E)	2	#4	5'-1"	
e14(E)	2	#4	4'-10"	
e15(E)	2	#4	5'-9"	
e16(E)	2	#4	6'-0"	
e17(E)	12	#4	9'-1"	
e18(E)	12	#4	12'-11"	
e19(E)	16	#4	3'-8"	
x(E)	62	#5	5'-11"	

Reinforcement Bars, Epoxy Coated Pound 49,012
Concrete Superstructure Cu. Yd. 256.6

NOTES

1. Bars indicated thus 1 X 3 - #5 etc. indicates 1 line of bars with 3 lengths per line.
2. Reinforcement bars designated (E) shall be epoxy coated.
3. For approach span parapet details see sheet 7.
4. Protective coat shall be applied to the top and inside faces of the parapets and sidewalk.
5. I.F. denotes inside face
O.F. denotes outside face
F.F. denotes Front Face
B.F. denotes Back Face

DESIGNED	T.M.M.
CHECKED	C.M.W.
DRAWN	B.D.M./S.H.K.
CHECKED	C.M.W.

Hoelscher Engineering, P.C.
11 Executive Drive Suite 12
Fairview Heights, Illinois 62208
(618)624-8610 FAX: (618)624-8611

ILLINOIS DEPARTMENT OF TRANSPORTATION
PARAPET DETAILS
WEST CORBIN STREET OVER F.A.P. 310 (IL-255)
F.A.U. 8959 SECTION 05-00016-03-BR
MADISON COUNTY
STATION 36+23.37
STRUCTURE NO. 060-6851