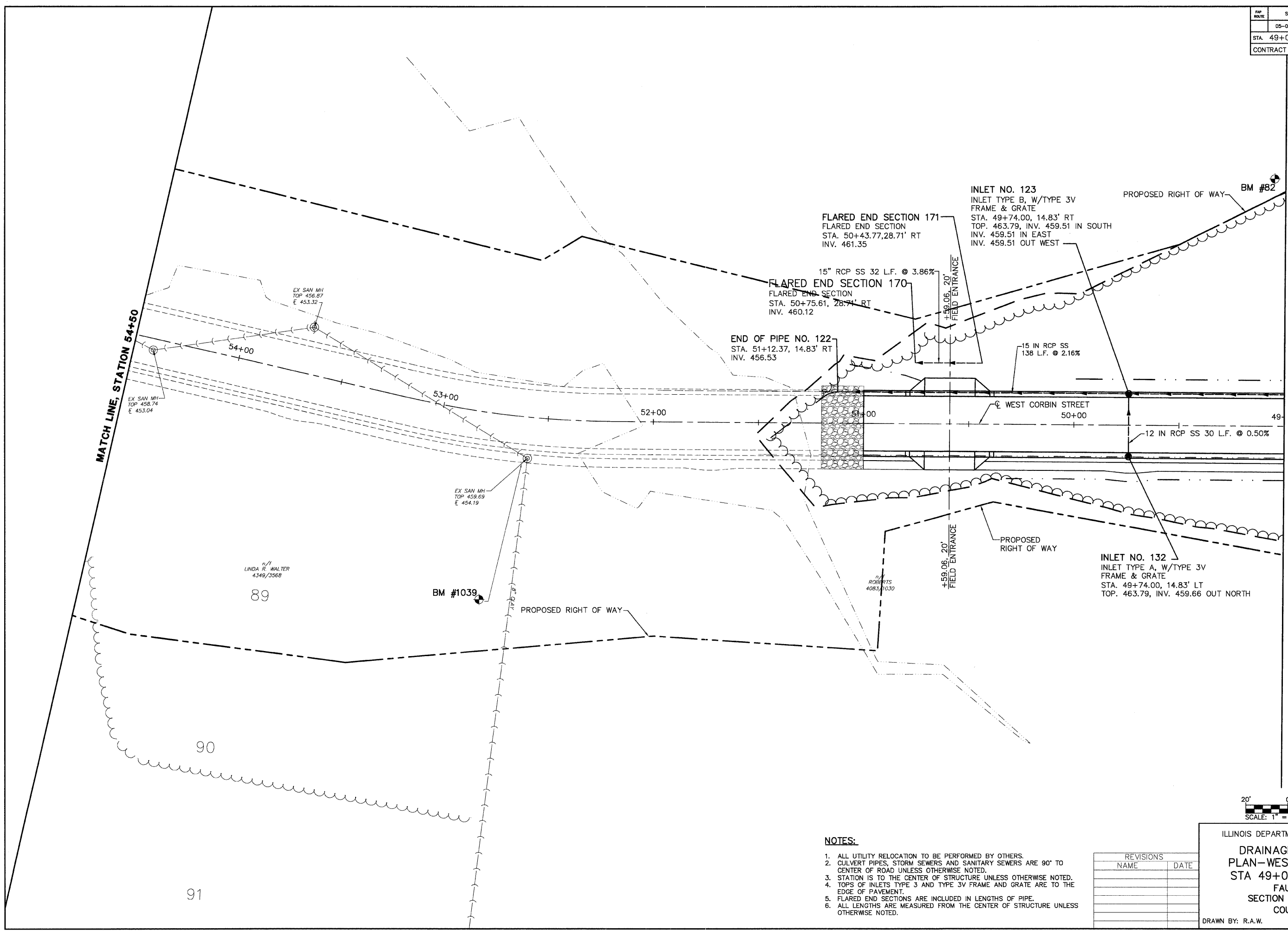


FAP ROUTE	SECTION	COUNTY	TOTAL SHEETS	SHEET NO
05-00016-03-BR	MADISON	129	39	
STA. 49+00		TO STA. 54+50		
CONTRACT NO.: 97351				

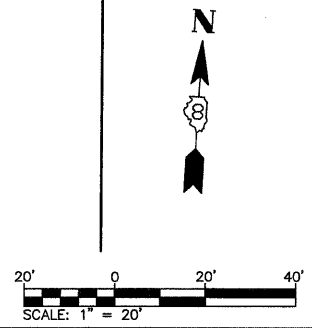
BENCHMARK DATUM
 BM 82
 PIN W/CAP
 STA. 49+05.25, 117.15 RIGHT
 ELEV.: 492.68
 BM 1039
 TRAVERSE PIN
 STA. 52+60.62, 22.35 LEFT
 ELEV.: 459.88

PLAN	SUPERSEDED	DATE
NO. BOOK	BY DATE	2/2/06
NO.	PLOTTED BY	J.T.F.
	CHECKED BY	E.R.O.
	DATE	2/2/06
	FILE NAME	



MATCH LINE, STATION 49+00

MATCH LINE, STATION 54+50



NOTES:

1. ALL UTILITY RELOCATION TO BE PERFORMED BY OTHERS.
2. CULVERT PIPES, STORM SEWERS AND SANITARY SEWERS ARE 90° TO CENTER OF ROAD UNLESS OTHERWISE NOTED.
3. STATION IS TO THE CENTER OF STRUCTURE UNLESS OTHERWISE NOTED.
4. TOPS OF INLETS TYPE 3 AND TYPE 3V FRAME AND GRATE ARE TO THE EDGE OF PAVEMENT.
5. FLARED END SECTIONS ARE INCLUDED IN LENGTHS OF PIPE.
6. ALL LENGTHS ARE MEASURED FROM THE CENTER OF STRUCTURE UNLESS OTHERWISE NOTED.

REVISIONS	
NAME	DATE

ILLINOIS DEPARTMENT OF TRANSPORTATION
DRAINAGE AND UTILITIES
PLAN—WEST CORBIN STREET
STA 49+00 TO STA 54+50
 FAU ROUTE 8959
 SECTION 05-00016-03-BR
 COUNTY MADISON
 DRAWN BY: R.A.W.