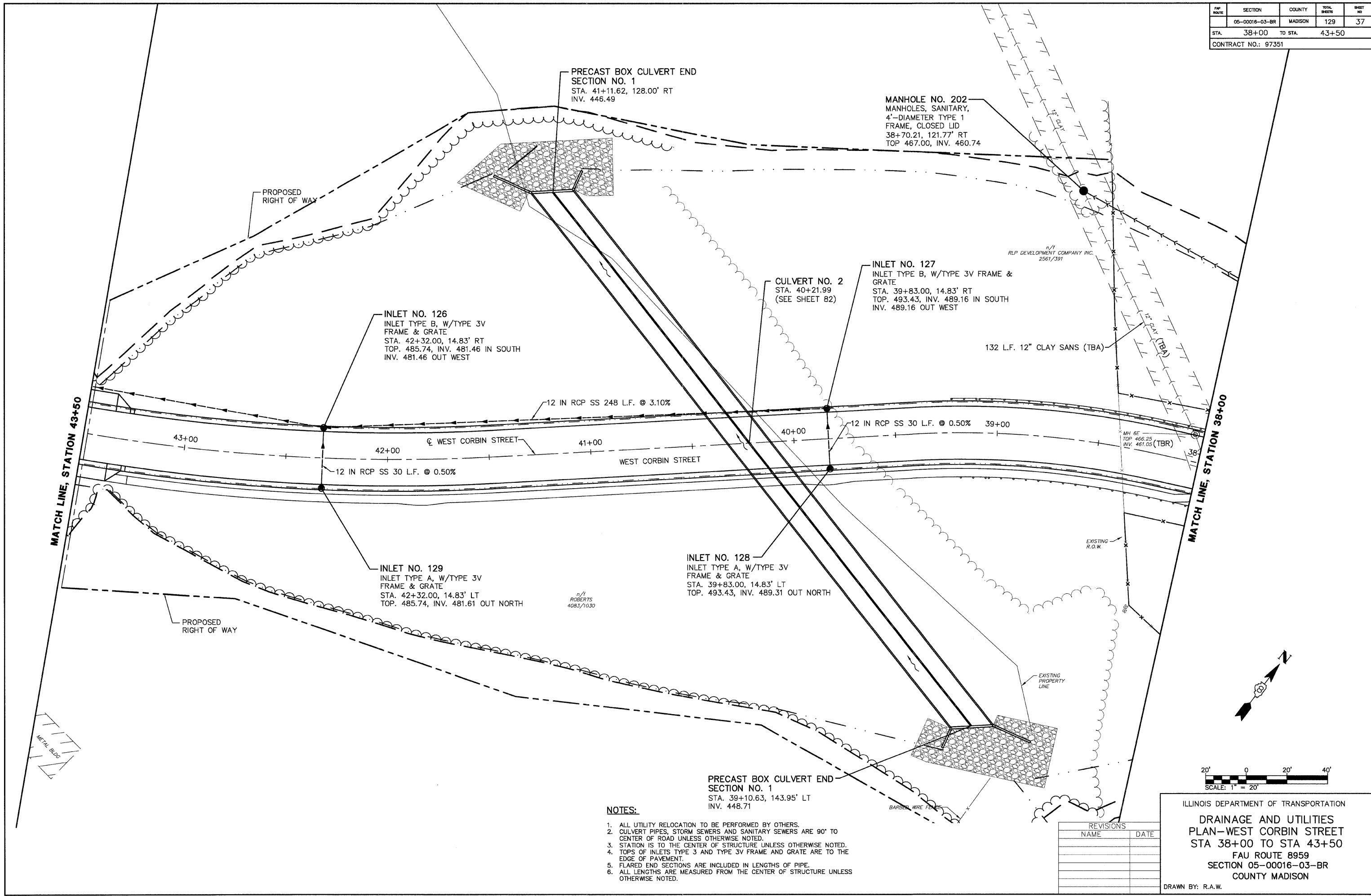


FW ROUTE	SECTION	COUNTY	TOTAL SHEETS	SHEET NO
05-00016-03-BR	MADISON	129	37	
STA. 38+00	TO STA. 43+50			
CONTRACT NO.: 97351				

DATE	2/2/06
BY	J.P.F.
APPROVED	
PLANNED	
DESIGNED	
CHECKED	
REVISIONS	
NO.	
PLAN	
NO.	
NOTE BOOK	
NO.	
FILE NAME	



NOTES:

1. ALL UTILITY RELOCATION TO BE PERFORMED BY OTHERS.
2. CULVERT PIPES, STORM SEWERS AND SANITARY SEWERS ARE 90° TO CENTER OF ROAD UNLESS OTHERWISE NOTED.
3. STATION IS TO THE CENTER OF STRUCTURE UNLESS OTHERWISE NOTED.
4. TOPS OF INLETS TYPE 3 AND TYPE 3V FRAME AND GRATE ARE TO THE EDGE OF PAVEMENT.
5. FLARED END SECTIONS ARE INCLUDED IN LENGTHS OF PIPE.
6. ALL LENGTHS ARE MEASURED FROM THE CENTER OF STRUCTURE UNLESS OTHERWISE NOTED.

REVISIONS	
NAME	DATE

ILLINOIS DEPARTMENT OF TRANSPORTATION
**DRAINAGE AND UTILITIES
 PLAN—WEST CORBIN STREET
 STA 38+00 TO STA 43+50
 FAU ROUTE 8959
 SECTION 05-00016-03-BR
 COUNTY MADISON**
 DRAWN BY: R.A.W.

