

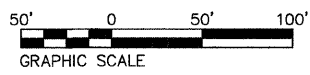
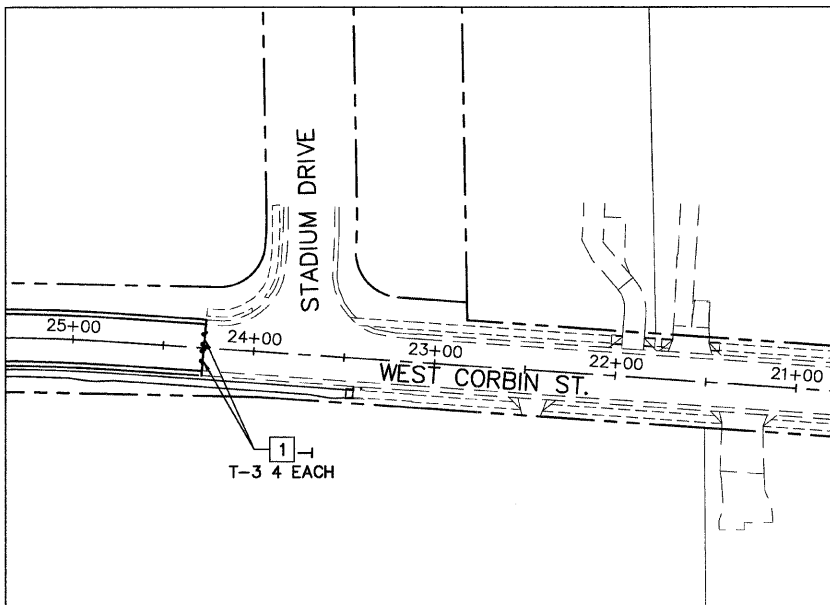
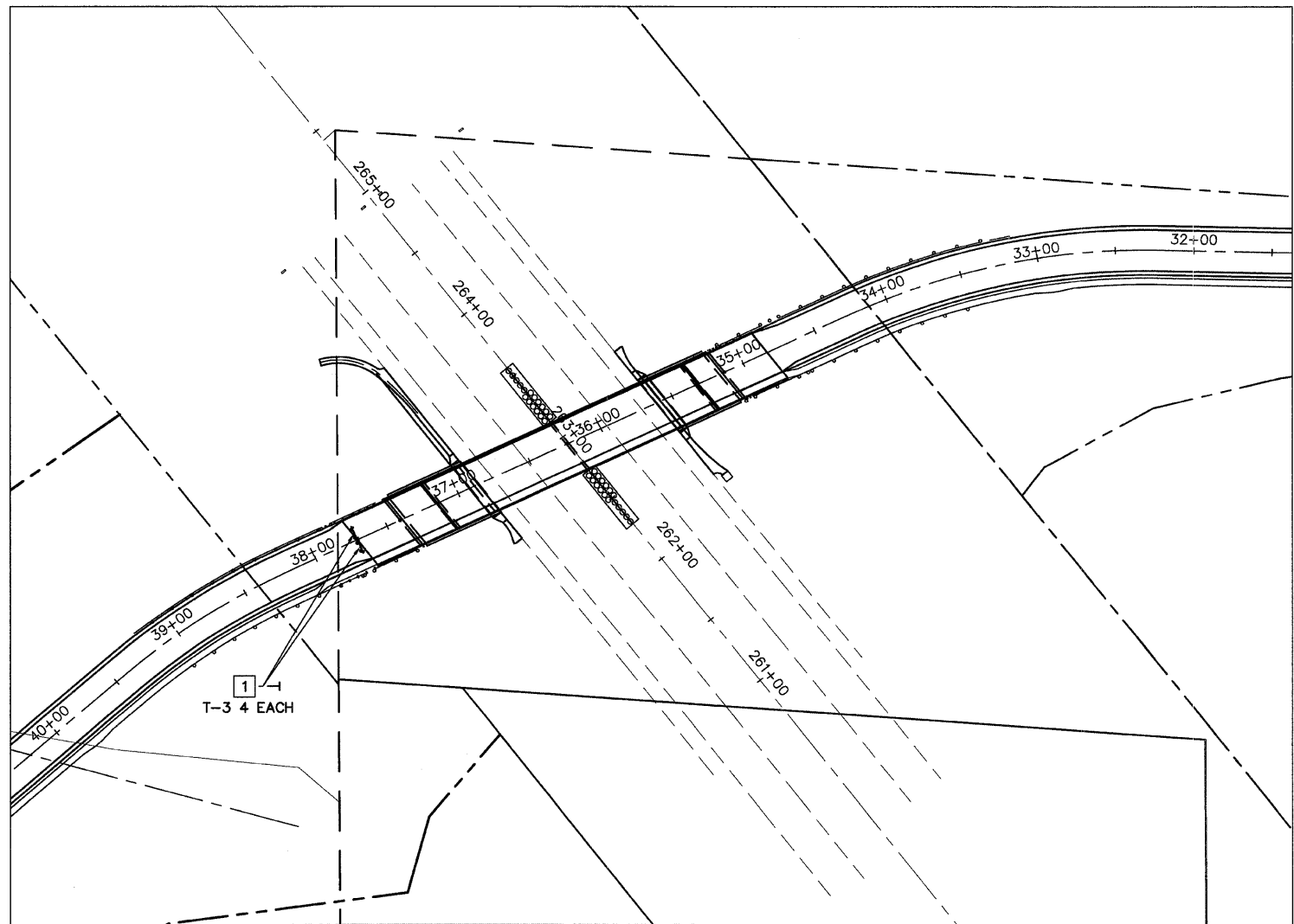
FAU ROUTE	SECTION	COUNTY	TOTAL SHEETS	SHEET NO
	05-00016-03-BR	MADISON	129	27
STA.		TO STA.		
CONTRACT NO.: 97351				

NOTES

- ROAD CLOSURE IS IN ACCORDANCE WITH STD. 701901.
- DISTANCES MAY BE ADJUSTED TO FIT FIELD CONDITIONS.
- EXACT LOCATIONS OF ALL WARNING SIGNS AND BARRICADES SHALL BE APPROVED BY THE ENGINEER PRIOR TO INSTALLATION.

LEGEND

- 1 ROAD CLOSED R11-2
- 18" x 18" (MINIMUM) ORANGE FLAG
- FLASHING LIGHT
- TYPE III BARRICADE WITH FLASHING LIGHT
- SIGN LOCATION AND DIRECTION



REVISIONS	
NAME	DATE

ILLINOIS DEPARTMENT OF TRANSPORTATION

TRAFFIC CONTROL

FAU ROUTE 8959
SECTION 05-00016-03-BR
COUNTY MADISON

DRAWN BY: R.A.W.