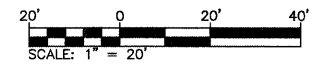
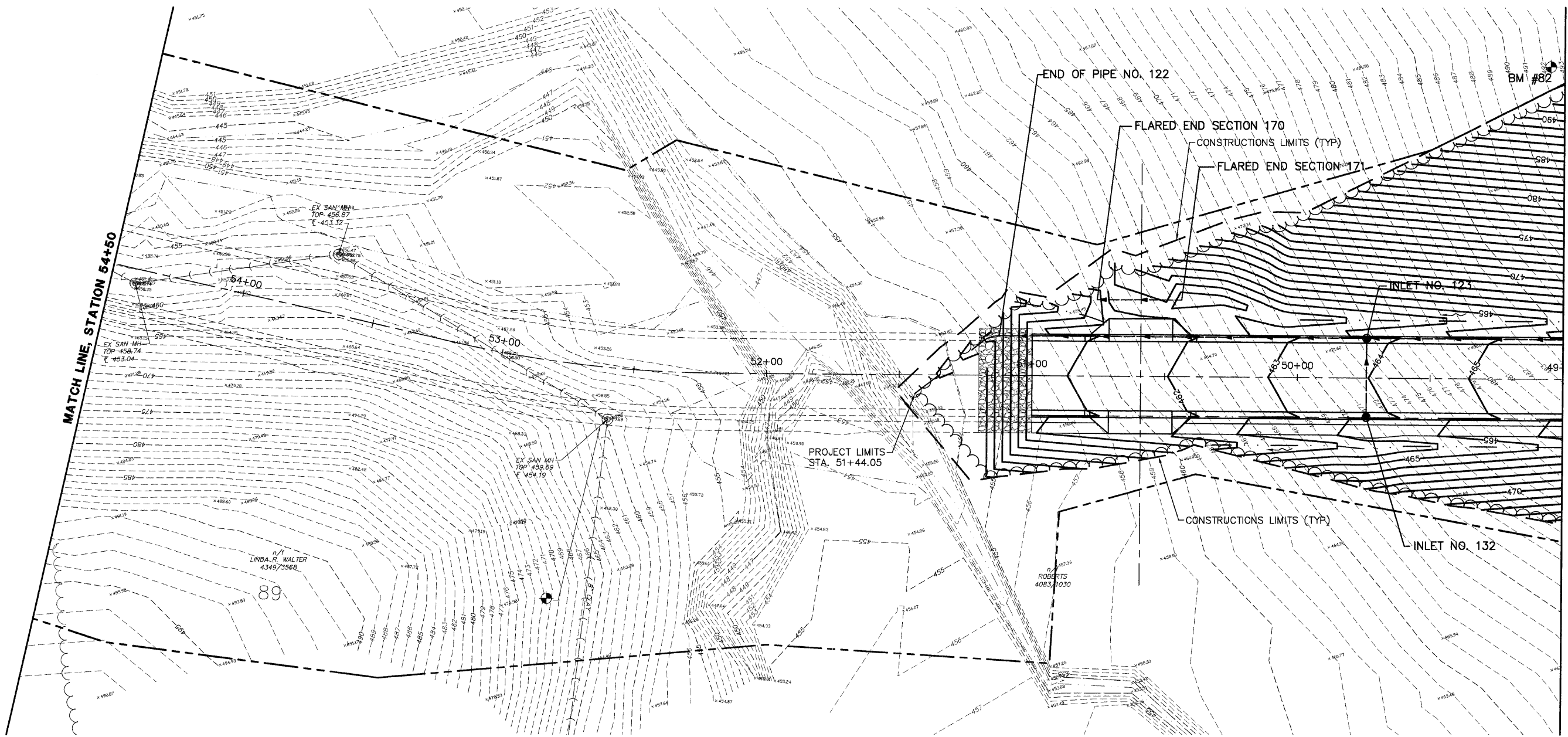


FAP ROUTE	SECTION	COUNTY	TOTAL SHEETS	SHEET NO
05-00016-03-BR	MADISON	129	26	
STA. 49+00		TO STA. 54+50		
CONTRACT NO.: 97351				



BENCHMARK DATUM

- BM 82
PIN W/CAP
STA. 49+05.25, 117.15 RIGHT
ELEV. 492.68
- BM 1039
TRAVERSE PIN
STA. 52+60.62, 22.35 LEFT
ELEV. 459.88



ILLINOIS DEPARTMENT OF TRANSPORTATION

GRADING PLAN
STA. 49+00 TO 54+50
 FAU ROUTE 8959
 SECTION 05-00016-03-BR
 COUNTY MADISON

DRAWN BY: R.A.W.

REVISIONS	
NAME	DATE