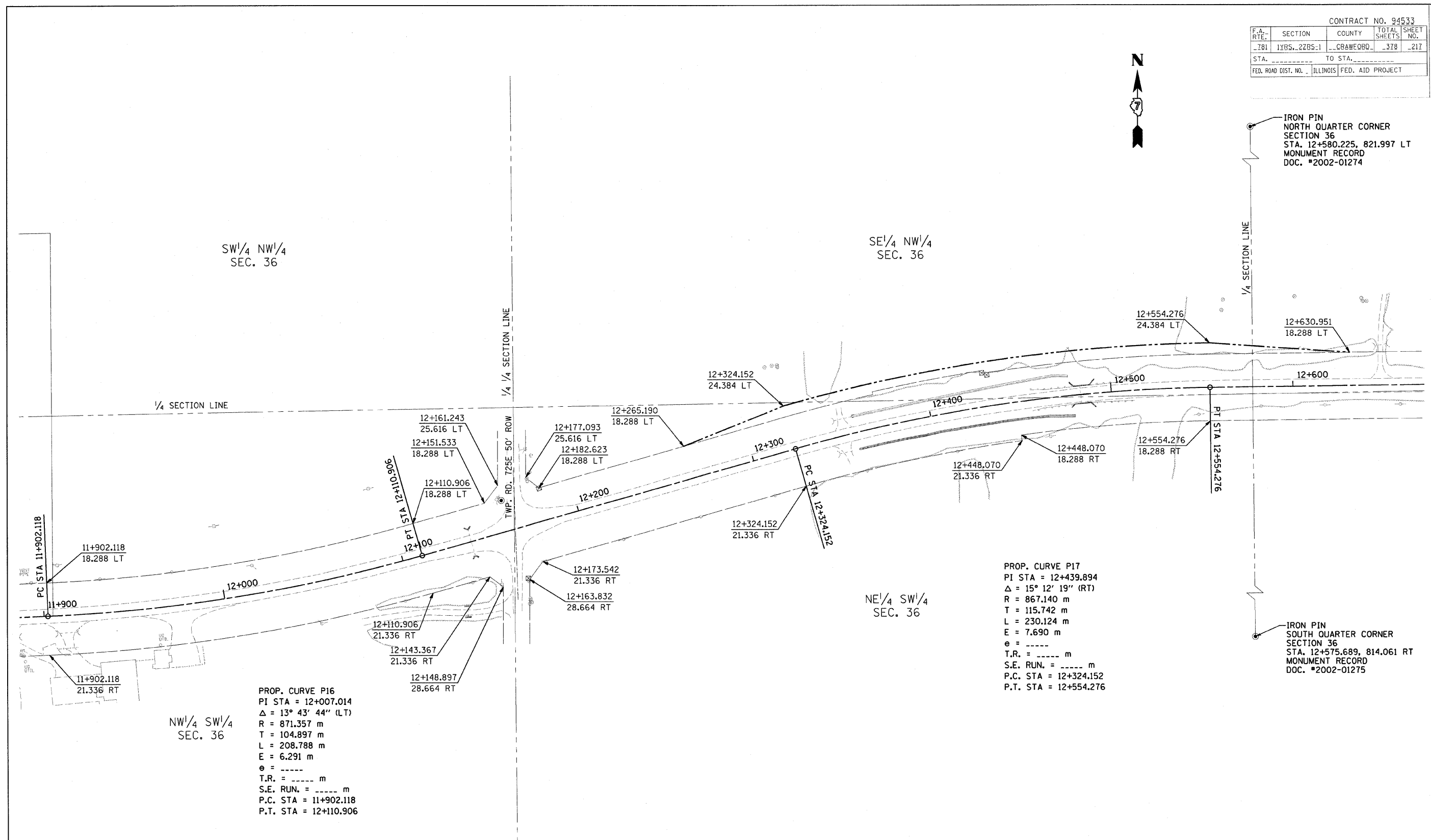


CONTRACT NO. 94533			
F.A. RTE.	SECTION	COUNTY	TOTAL SHEET NO.
781	1YRS-2ZRS-1	CRAWFORD	318 -217
STA.	TO STA.		
FED. ROAD DIST. NO.	ILLINOIS	FED. AID PROJECT	



IRON PIN
NORTH QUARTER CORNER
SECTION 36
STA. 12+580.225, 821.997 LT
MONUMENT RECORD
DOC. #2002-01274

IRON PIN
SOUTH QUARTER CORNER
SECTION 36
STA. 12+575.689, 814.061 RT
MONUMENT RECORD
DOC. #2002-01275



PROP. CURVE P16
PI STA = 12+007.014
 $\Delta = 13^\circ 43' 44''$ (LT)
R = 871.357 m
T = 104.897 m
L = 208.788 m
E = 6.291 m
e = -----
T.R. = ----- m
S.E. RUN. = ----- m
P.C. STA = 11+902.118
P.T. STA = 12+110.906

PROP. CURVE P17
PI STA = 12+439.894
 $\Delta = 15^\circ 12' 19''$ (RT)
R = 867.140 m
T = 115.742 m
L = 230.124 m
E = 7.690 m
e = -----
T.R. = ----- m
S.E. RUN. = ----- m
P.C. STA = 12+324.152
P.T. STA = 12+554.276

FOR INFORMATION ONLY

THESE METRIC RIGHT-OF-WAY PLANS ARE FOR INFORMATION ONLY. THEY WERE DEVELOPED FROM THE OFFICIAL ENGLISH VERSION OF THE RIGHT-OF-WAY PLANS. STATIONING AND DIMENSIONS CONVERTED TO METRIC. FINAL RIGHT-OF-WAY SHALL BE DETERMINED BY THE ORIGINAL ENGLISH PLANS.

RIGHT OF WAY PLANS FAP ROUTE 781	
PROJECT	SECTION 1YRS, 2ZRS-1
STATION 11+895	TO
STATION 12+670	
COUNTY CRAWFORD	
SCALE 1:1000	SHEET 17 OF 22