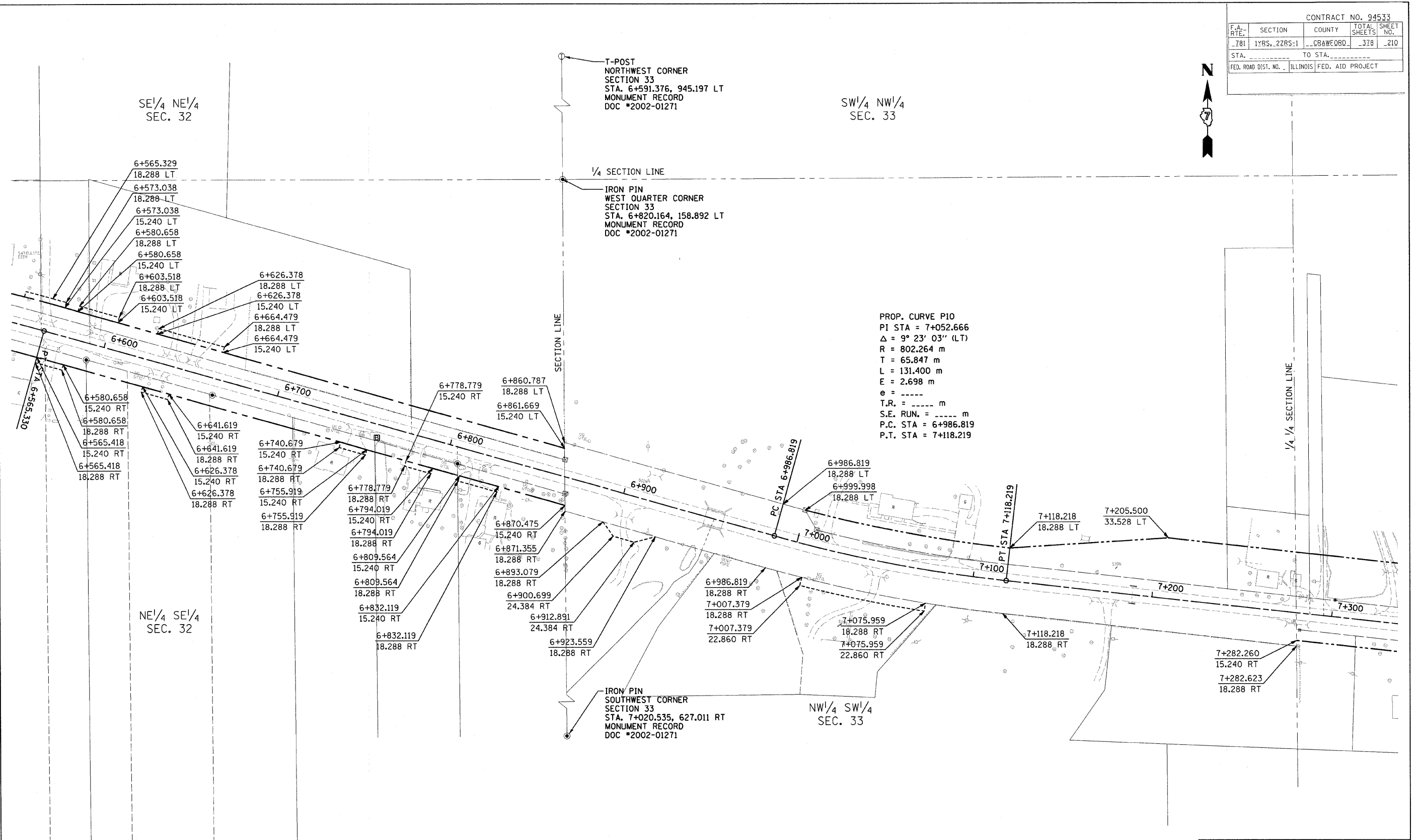


| | | | | |
|---------------------|--------------|---------------------------|--------------|-----------|
| CONTRACT NO. 94533 | | | | |
| F.A. RTE. | SECTION | COUNTY | TOTAL SHEETS | SHEET NO. |
| 781 | 1YRS, 2ZRS-1 | CRAWFORD | 378 | 210 |
| STA. | | TO STA. | | |
| FED. ROAD DIST. NO. | | ILLINOIS FED. AID PROJECT | | |



FOR INFORMATION ONLY

THESE METRIC RIGHT-OF-WAY PLANS ARE FOR INFORMATION ONLY. THEY WERE DEVELOPED FROM THE OFFICIAL ENGLISH VERSION OF THE RIGHT-OF-WAY PLANS. STATIONING AND DIMENSIONS CONVERTED TO METRIC. FINAL RIGHT-OF-WAY SHALL BE DETERMINED BY THE ORIGINAL ENGLISH PLANS.

| | |
|--------------------|----------------------|
| RIGHT OF WAY PLANS | |
| FAP ROUTE 781 | |
| PROJECT | SECTION 1YRS, 2ZRS-1 |
| STATION 6+555 | TO |
| STATION 7+335 | |
| COUNTY CRAWFORD | |
| SCALE 1:1000 | SHEET 10 OF 22 |

CONTRACT NO. 94533