

CONTRACT NO. 94533			
F.A. RTE.	SECTION	COUNTY	TOTAL SHEET NO.
781	1YRS-2ZRS-1	CRAWFORD	378-209
STA. _____		TO STA. _____	
FED. ROAD DIST. NO.	ILLINOIS	FED. AID PROJECT	



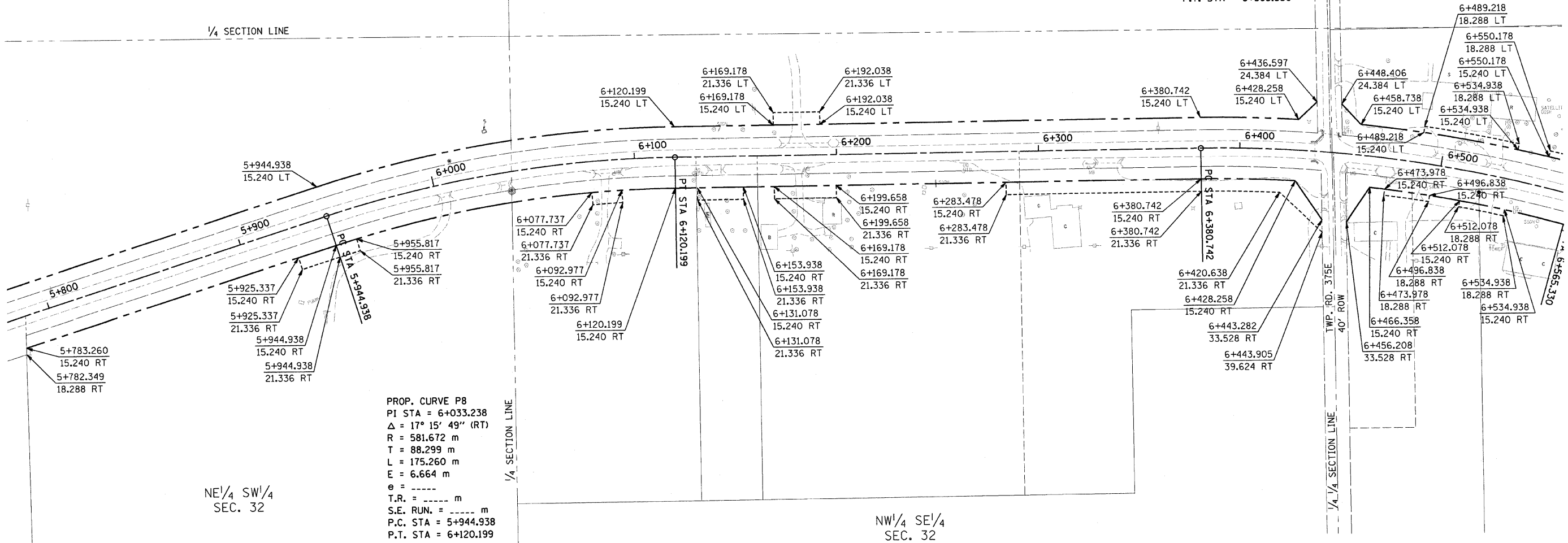
PROP. CURVE P9
 PI STA = 6+473.659
 $\Delta = 16^\circ 14' 10''$ (RT)
 R = 651.393 m
 T = 92.916 m
 L = 184.587 m
 E = 6.594 m
 e = -----
 T.R. = ----- m
 S.E. RUN. = ----- m
 P.C. STA = 6+380.742
 P.T. STA = 6+565.330

IRON PIN
 NORTH QUARTER CORNER
 SECTION 32
 STA. 6+087.707, 881.384 LT
 MONUMENT RECORD
 DOC. *2002-00922

SE $\frac{1}{4}$ NW $\frac{1}{4}$
 SEC. 32

SW $\frac{1}{4}$ NE $\frac{1}{4}$
 SEC. 32

$\frac{1}{4}$ SECTION LINE



PROP. CURVE P8
 PI STA = 6+033.238
 $\Delta = 17^\circ 15' 49''$ (RT)
 R = 581.672 m
 T = 88.299 m
 L = 175.260 m
 E = 6.664 m
 e = -----
 T.R. = ----- m
 S.E. RUN. = ----- m
 P.C. STA = 5+944.938
 P.T. STA = 6+120.199

NE $\frac{1}{4}$ SW $\frac{1}{4}$
 SEC. 32

NW $\frac{1}{4}$ SE $\frac{1}{4}$
 SEC. 32

IRON PIN
 SOUTH QUARTER CORNER
 SECTION 32
 STA. 5+817.285, 722.257 RT
 MONUMENT RECORD
 DOC. *2002-00922

FOR INFORMATION ONLY

THESE METRIC RIGHT-OF-WAY PLANS ARE FOR INFORMATION ONLY. THEY WERE DEVELOPED FROM THE OFFICIAL ENGLISH VERSION OF THE RIGHT-OF-WAY PLANS. STATIONING AND DIMENSIONS CONVERTED TO METRIC. FINAL RIGHT-OF-WAY SHALL BE DETERMINED BY THE ORIGINAL ENGLISH PLANS.

RIGHT OF WAY PLANS
 FAP ROUTE 781

PROJECT SECTION 1YRS, 2ZRS-1
 STATION 5+785 TO
 STATION 6+555
 COUNTY CRAWFORD
 SCALE 1:1000 SHEET 9 OF 22