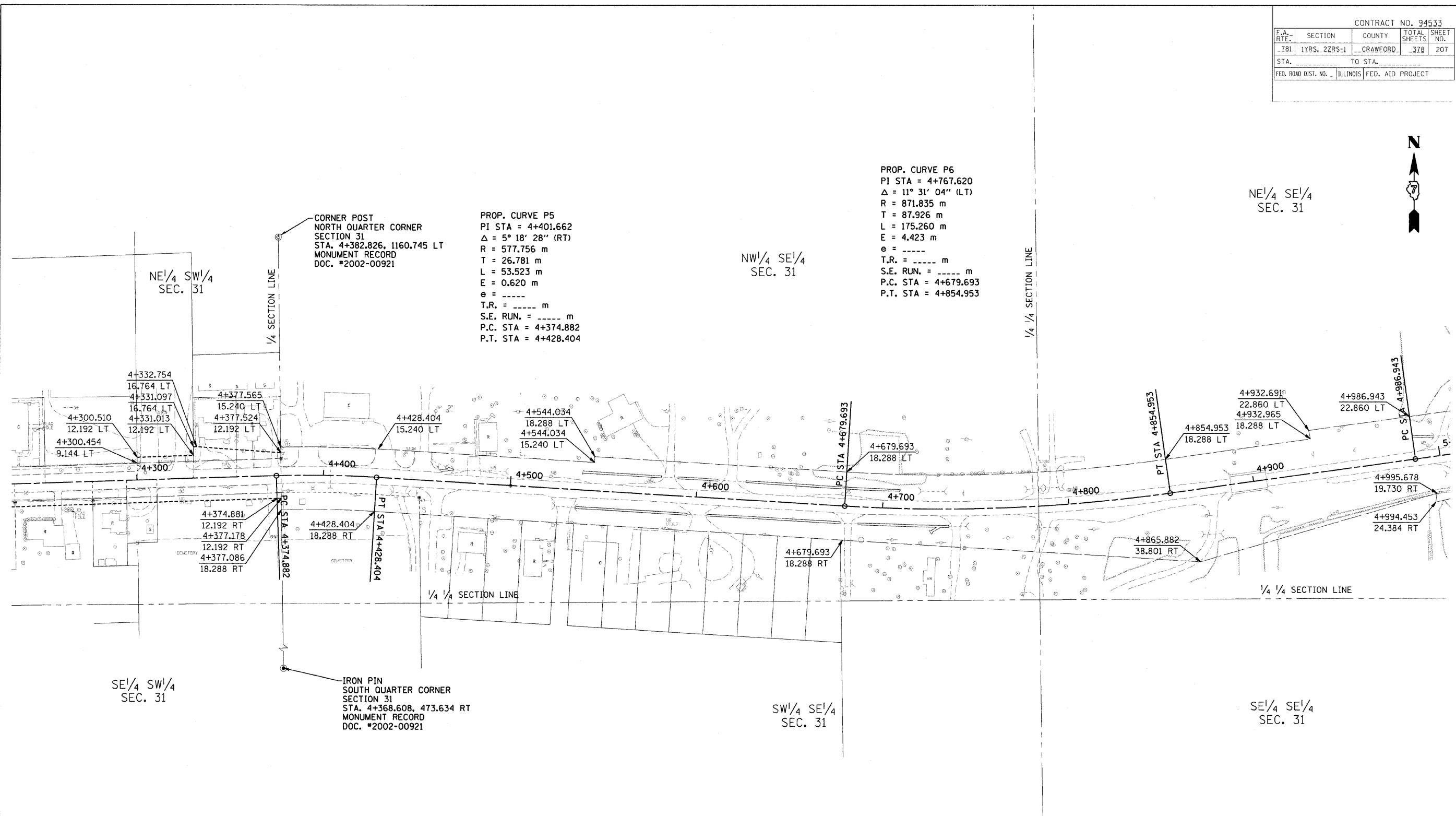


CONTRACT NO. 94533				
F.A. RTE.	SECTION	COUNTY	TOTAL SHEETS	SHEET NO.
781	1YRS. 2ZRS-1	CRAWFORD	378	207
STA.		TO STA.		
FED. ROAD DIST. NO.		ILLINOIS	FED. AID PROJECT	



PROP. CURVE P5
 PI STA = 4+401.662
 $\Delta = 5^\circ 18' 28''$ (RT)
 R = 577.756 m
 T = 26.781 m
 L = 53.523 m
 E = 0.620 m
 e = -----
 T.R. = ----- m
 S.E. RUN. = ----- m
 P.C. STA = 4+374.882
 P.T. STA = 4+428.404

PROP. CURVE P6
 PI STA = 4+767.620
 $\Delta = 11^\circ 31' 04''$ (LT)
 R = 871.835 m
 T = 87.926 m
 L = 175.260 m
 E = 4.423 m
 e = -----
 T.R. = ----- m
 S.E. RUN. = ----- m
 P.C. STA = 4+679.693
 P.T. STA = 4+854.953

CORNER POST
 NORTH QUARTER CORNER
 SECTION 31
 STA. 4+382.826, 1160.745 LT
 MONUMENT RECORD
 DOC. *2002-00921

IRON PIN
 SOUTH QUARTER CORNER
 SECTION 31
 STA. 4+368.608, 473.634 RT
 MONUMENT RECORD
 DOC. *2002-00921

FOR INFORMATION ONLY

THESE METRIC RIGHT-OF-WAY PLANS ARE FOR INFORMATION ONLY. THEY WERE DEVELOPED FROM THE OFFICIAL ENGLISH VERSION OF THE RIGHT-OF-WAY PLANS. STATIONING AND DIMENSIONS CONVERTED TO METRIC. FINAL RIGHT-OF-WAY SHALL BE DETERMINED BY THE ORIGINAL ENGLISH PLANS.

RIGHT OF WAY PLANS
 FAP ROUTE 781
 PROJECT SECTION 1YRS, 2ZRS-1
 STATION 4+235 TO
 STATION 5+000
 COUNTY CRAWFORD
 SCALE 1:1000 SHEET 7 OF 22