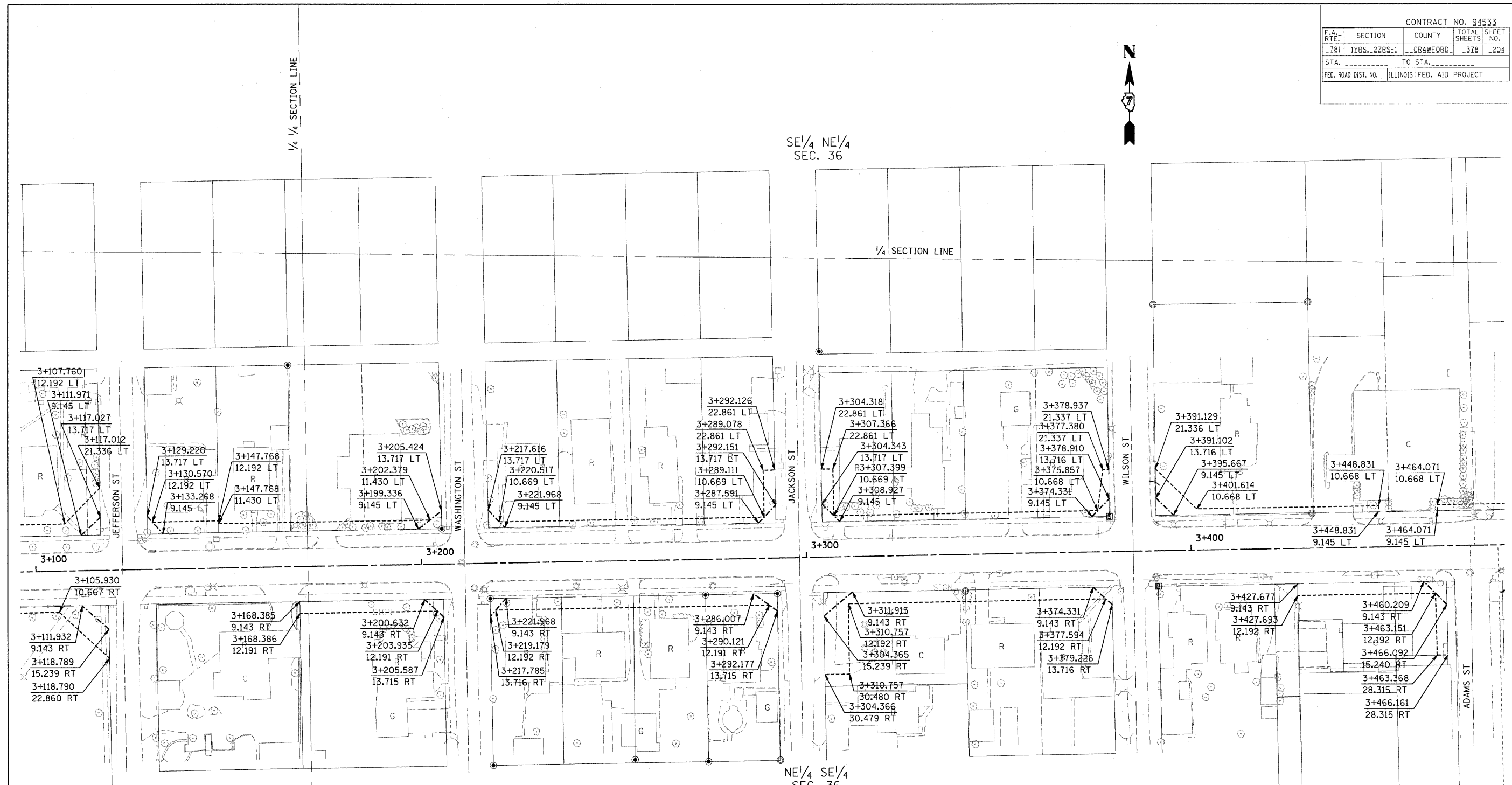


CONTRACT NO. 94533				
F.A. RTE.	SECTION	COUNTY	TOTAL SHEETS	SHEET NO.
781	1YRS., 2ZRS-1	CRAWFORD	378	204
STA.	TO STA.			
FED. ROAD DIST. NO.	ILLINOIS	FED. AID PROJECT		



**FOR INFORMATION ONLY**

THESE METRIC RIGHT-OF-WAY PLANS ARE FOR INFORMATION ONLY. THEY WERE DEVELOPED FROM THE OFFICIAL ENGLISH VERSION OF THE RIGHT-OF-WAY PLANS. STATIONING AND DIMENSIONS CONVERTED TO METRIC. FINAL RIGHT-OF-WAY SHALL BE DETERMINED BY THE ORIGINAL ENGLISH PLANS.

**RIGHT OF WAY PLANS**  
**FAP ROUTE 781**  
 PROJECT SECTION 1YRS, 2ZRS-1  
 STATION 3+100 TO  
 STATION 3+475  
 COUNTY CRAWFORD  
 SCALE 1:500 SHEET 4 OF 22