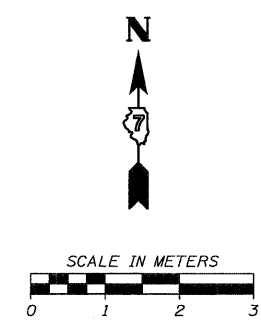
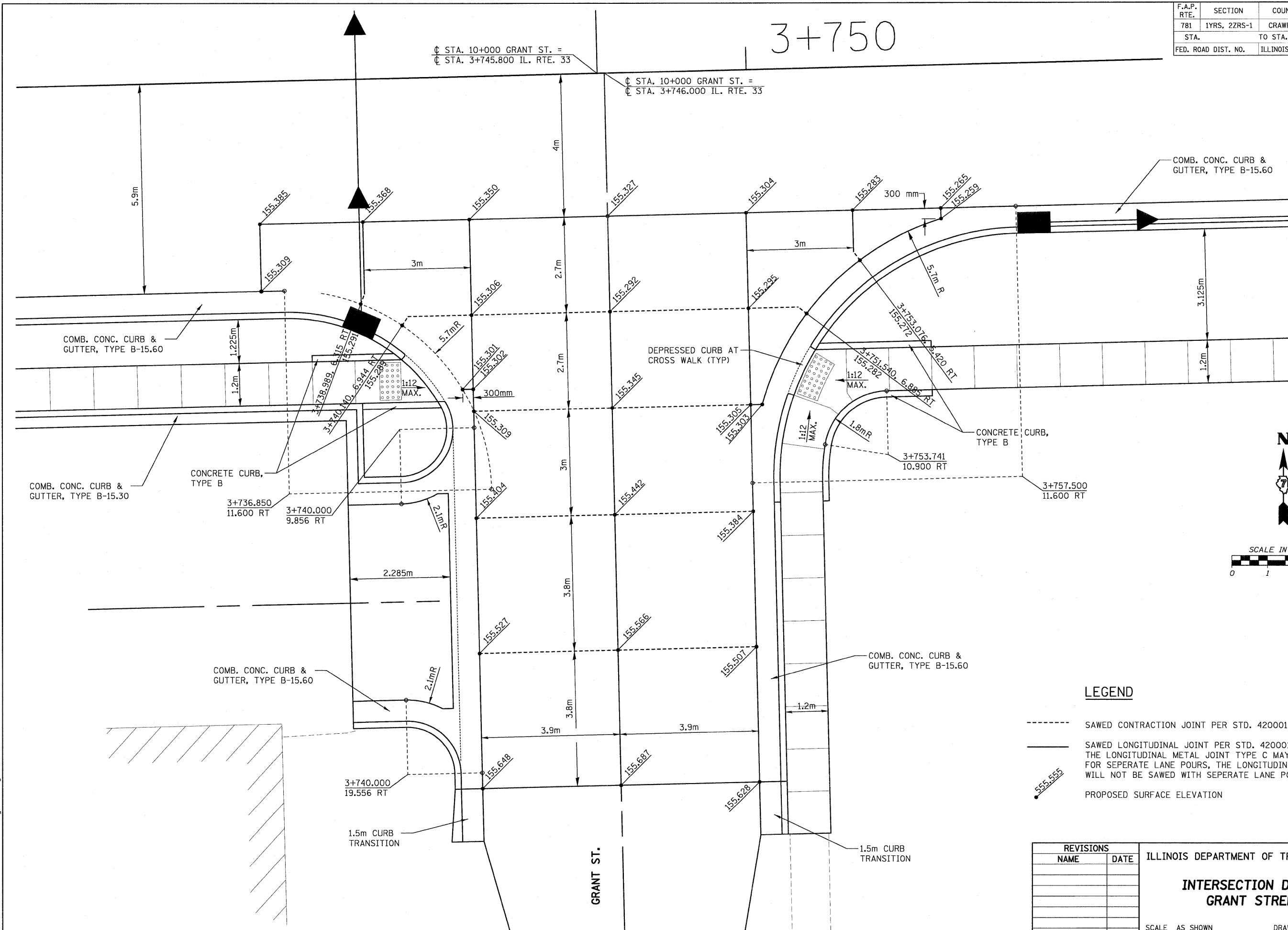


F.A.P. RTE.	SECTION	COUNTY	TOTAL SHEETS	SHEET NO.
781	1YRS, 2ZRS-1	CRAWFORD	378	164
STA.		TO STA.		
FED. ROAD DIST. NO.		ILLINOIS	FED. AID PROJECT	

3+750

⊕ STA. 10+000 GRANT ST. =
⊕ STA. 3+745.800 IL. RTE. 33

⊕ STA. 10+000 GRANT ST. =
⊕ STA. 3+746.000 IL. RTE. 33



LEGEND

- SAWED CONTRACTION JOINT PER STD. 420001
- SAWED LONGITUDINAL JOINT PER STD. 420001
- THE LONGITUDINAL METAL JOINT TYPE C MAY BE USED FOR SEPARATE LANE POURS, THE LONGITUDINAL JOINT WILL NOT BE SAWED WITH SEPARATE LANE POURS.
- 555.555 PROPOSED SURFACE ELEVATION

REVISIONS	
NAME	DATE

ILLINOIS DEPARTMENT OF TRANSPORTATION

**INTERSECTION DETAIL
GRANT STREET**

SCALE AS SHOWN DRAWN BY EDW
DATE MARCH 20, 2008 CHECKED BY RGH

PLOT DATE = 3/20/2008
FILE NAME = H:\4420\781\164\33-Intersect.dgn

H. M. & G. NO. 4420