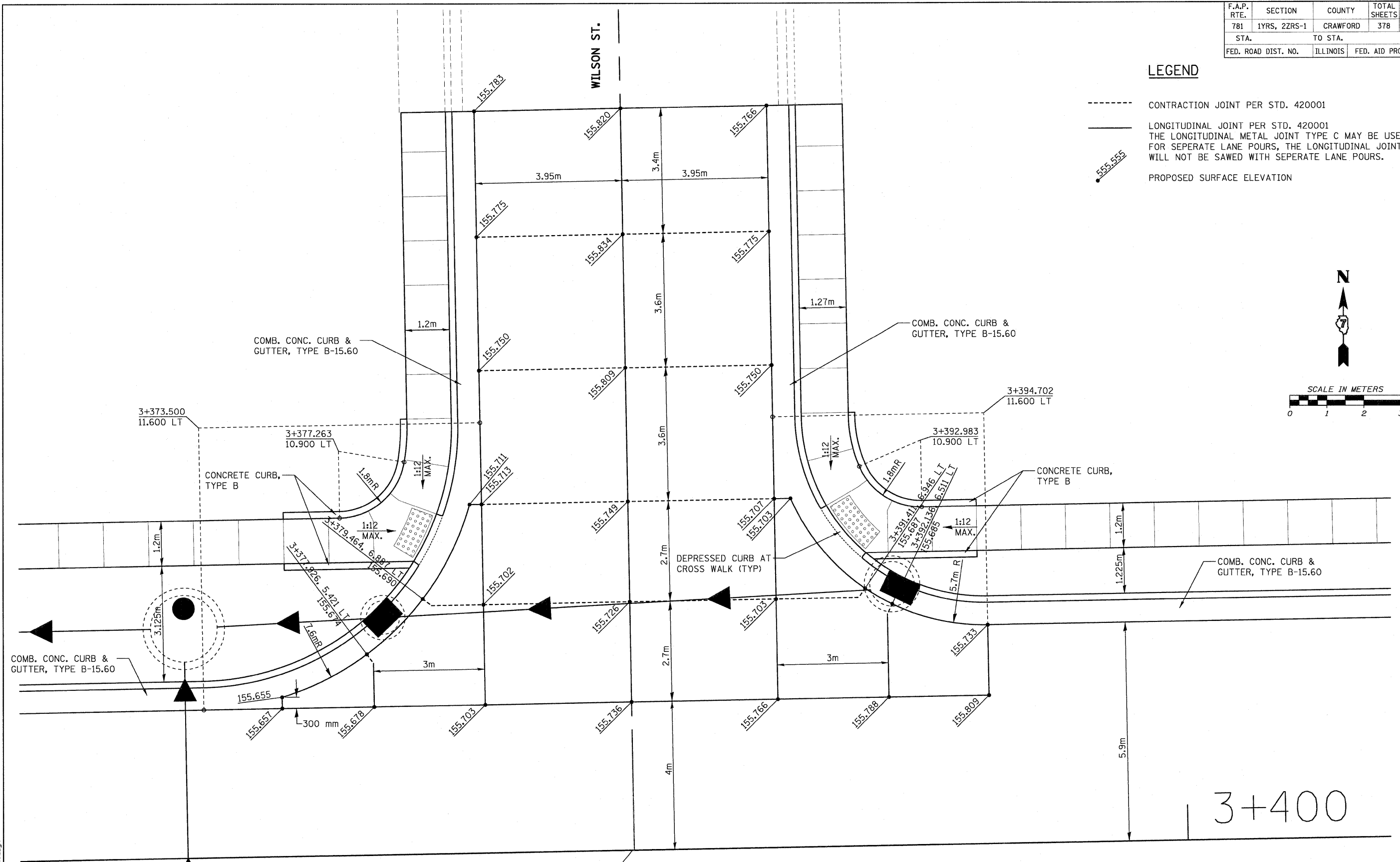
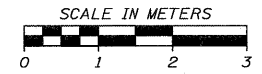


F.A.P. RTE.	SECTION	COUNTY	TOTAL SHEETS	SHEET NO.
781	1YRS, 2ZRS-1	CRAWFORD	378	157
STA.		TO STA.		
FED. ROAD DIST. NO.		ILLINOIS	FED. AID PROJECT	

**LEGEND**

- CONTRACTION JOINT PER STD. 420001
- LONGITUDINAL JOINT PER STD. 420001
- 555.555 THE LONGITUDINAL METAL JOINT TYPE C MAY BE USED FOR SEPERATE LANE POURS, THE LONGITUDINAL JOINT WILL NOT BE SAWED WITH SEPERATE LANE POURS.
- PROPOSED SURFACE ELEVATION



3+400

☐ STA. 10+000 WILSON ST. =  
☐ STA. 3+385.050 IL. RTE. 33

REVISIONS		ILLINOIS DEPARTMENT OF TRANSPORTATION	
NAME	DATE		
		<b>INTERSECTION DETAIL WILSON ST.</b>	
		SCALE AS SHOWN	DRAWN BY EDW
		DATE MARCH 20, 2008	CHECKED BY RGH

PLOT DATE = 3/20/2008  
 FILE NAME = H:\4420\78157\_int.WilsonN.dgn

H. M. & G. NO. 4420