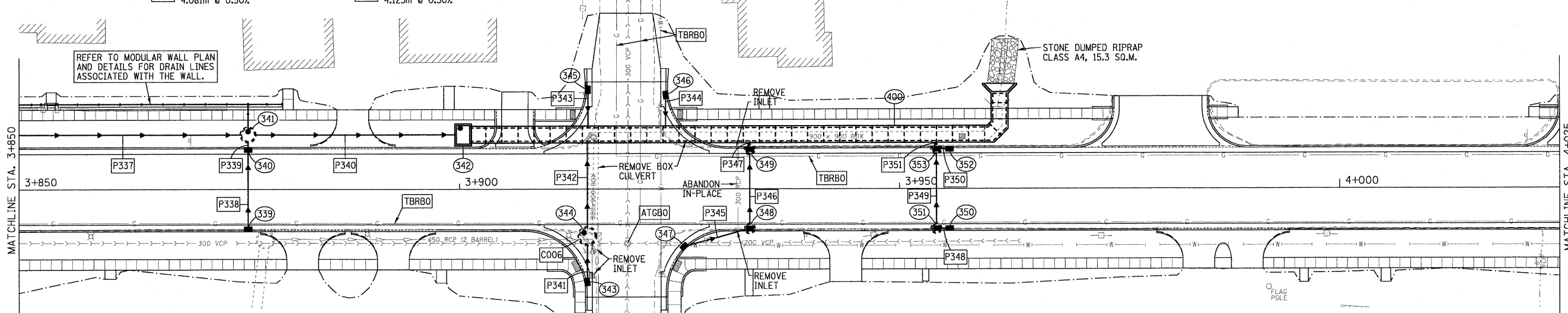
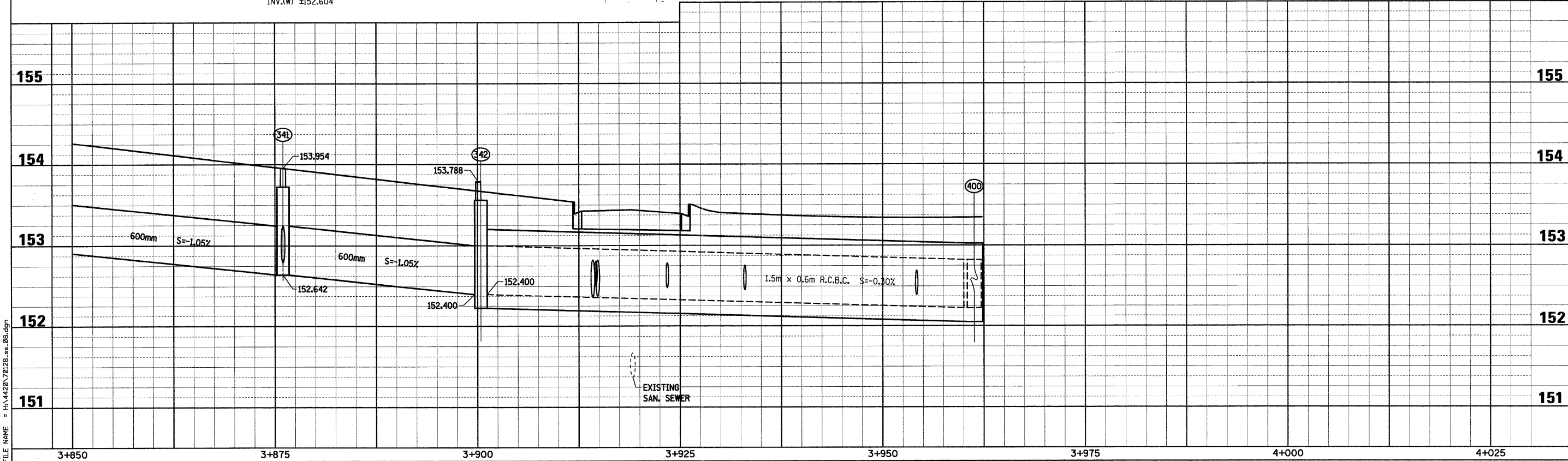


F.A.P. RTE.	SECTION	COUNTY	TOTAL SHEETS	SHEET NO.
781	1YRS, 2ZRS-1	CRAWFORD	378	128
STA. 3+850		TO STA. 4+025		
FED. ROAD DIST. NO.		ILLINOIS	FED. AID PROJECT	

- P337 STORM SEWER, CL.A, TY.1, 600 29.680m @ 1.05%
- P338 STORM SEWER, CL.A, TY.1, 300 8.496m @ 0.50%
- P339 STORM SEWER, CL.A, TY.1, 300 0.763m @ 2.00%
- P340 STORM SEWER, CL.A, TY.1, 600 22.996m @ 1.05%
- P341 STORM SEWER, CL.A, TY.1, 300 4.081m @ 0.50%
- C006 RECONNECT EXIST. DOUBLE BARREL 450mm PIPE TO INLET NO. 344, INV. ±152.604. VERIFY EXIST. PIPE INVERTS AND FIELD CUT OPENING IN STRUCTURE. COST INCIDENTAL TO COST OF STORM SEWER ITEMS.
- P342 STORM SEWER, CL.A, TY.1, 450 DOUBLE BARREL PIPES 9.872m EACH @ 0.50%
- P343 STORM SEWER, CL.A, TY.1, 300 4.123m @ 0.50%
- P344 STORM SEWER, CL.A, TY.1, 300 3.523m @ 0.50%
- P345 STORM SEWER, CL.A, TY.1, 300 7.109m @ 0.50%
- P346 STORM SEWER, CL.A, TY.1, 300 8.131m @ 0.40%
- P347 STORM SEWER, CL.A, TY.1, 300 0.553m @ 0.40%
- P348 STORM SEWER, CL.A, TY.1, 300 0.863m @ 0.50%
- P349 STORM SEWER, CL.A, TY.1, 300 8.131m @ 0.40%
- P350 STORM SEWER, CL.A, TY.1, 300 0.863m @ 0.50%
- P351 STORM SEWER, CL.A, TY.1, 300 0.553m @ 0.40%



- 339 INLET TY.A, TY.3 F&G STA. 3+876.000, 4.475m RT. GRATE 153.731 INV. 152.852
- 340 INLET TY.A, TY.3 F&G STA. 3+876.000, 4.475m LT. GRATE 153.731 INV. 152.810
- 341 MH. TY.A, RESTRICTED DEPTH 1.5m DIA., TY.1 FRAME, CL. LID STA. 3+876.000, 6.200m LT. SEE DETAIL FOR FRAME OFFSET TOP 153.954 INV.(E,W) 152.642 INV.(S) 152.794
- 342 JUNCTION BOX NO. 1 STA. 3+900.418, 6.200m LT. SEE JUNCTION BOX DETAIL SHEET TOP 153.788 INV. 152.400
- 343 INLET TY.A, TY.3 F&G STA. 3+914.540, 10.500m RT. GRATE 153.448 INV. 152.443
- 344 MH. TY.A, RESTRICTED DEPTH 1.8m DIA., TY.1 FRAME, CL. LID STA. 3+914.540, 5.300m RT. SEE DETAIL FOR FRAME OFFSET TOP 153.501 INV.(N,S) 152.422 INV.(W) ±152.604
- 345 INLET TY.A, TY.3 F&G STA. 3+914.619, 11.300m LT. GRATE 153.309 INV. 152.532
- 346 INLET TY.A, TY.3 F&G STA. 3+923.432, 10.700m LT. GRATE 153.307 INV. 152.504
- 347 INLET TY.A, TY.3 F&G STA. 3+925.524, 6.500m RT. GRATE 153.366 INV. 152.527
- 348 INLET TY.B, RESTRICTED DEPTH 0.9m DIA., TY.3 F&G STA. 3+933.000, 4.475m RT. GRATE 153.387 INV.(W,N) 152.492
- 349 INLET TY.B, RESTRICTED DEPTH 0.9m DIA., TY.3 F&G STA. 3+933.000, 4.475m LT. GRATE 153.387 INV.(N,S) 152.459
- 350 INLET TY.A, TY.3 F&G STA. 3+955.700, 4.475m RT. GRATE 153.335 INV. 152.432
- 351 INLET TY.B, RESTRICTED DEPTH 0.9m DIA., TY.3 F&G STA. 3+954.200, 4.475m RT. GRATE 153.335 INV.(E,N) 152.427
- 352 INLET TY.A, TY.3 F&G STA. 3+955.700, 4.475m LT. GRATE 153.335 INV. 152.399
- 353 INLET TY.B, RESTRICTED DEPTH 0.9m DIA., TY.3 F&G STA. 3+954.200, 4.475m LT. GRATE 153.335 INV.(E,N,S) 152.395
- 400 BOX CULVERT NO. 7, R.C.B.C. 1.5m x 0.6m BEGIN STA. 3+901.180, 6.200m LT. END STA. 3+961.400, 11.000m LT. PROVIDE TWO 45° BENDS AS SHOWN (1) R.C.B.C. END SECTION, 1.5m x 0.6m U.S.F.L. 152.400 D.S.F.L. 152.207



Sheet: 8  
Angle: 1.3344  
Chain: P\_IL33

PLOT DATE = 3/26/2008  
FILE NAME = H:\1420\170128.sn\_08.dgn

HMG JOB NO. 4420