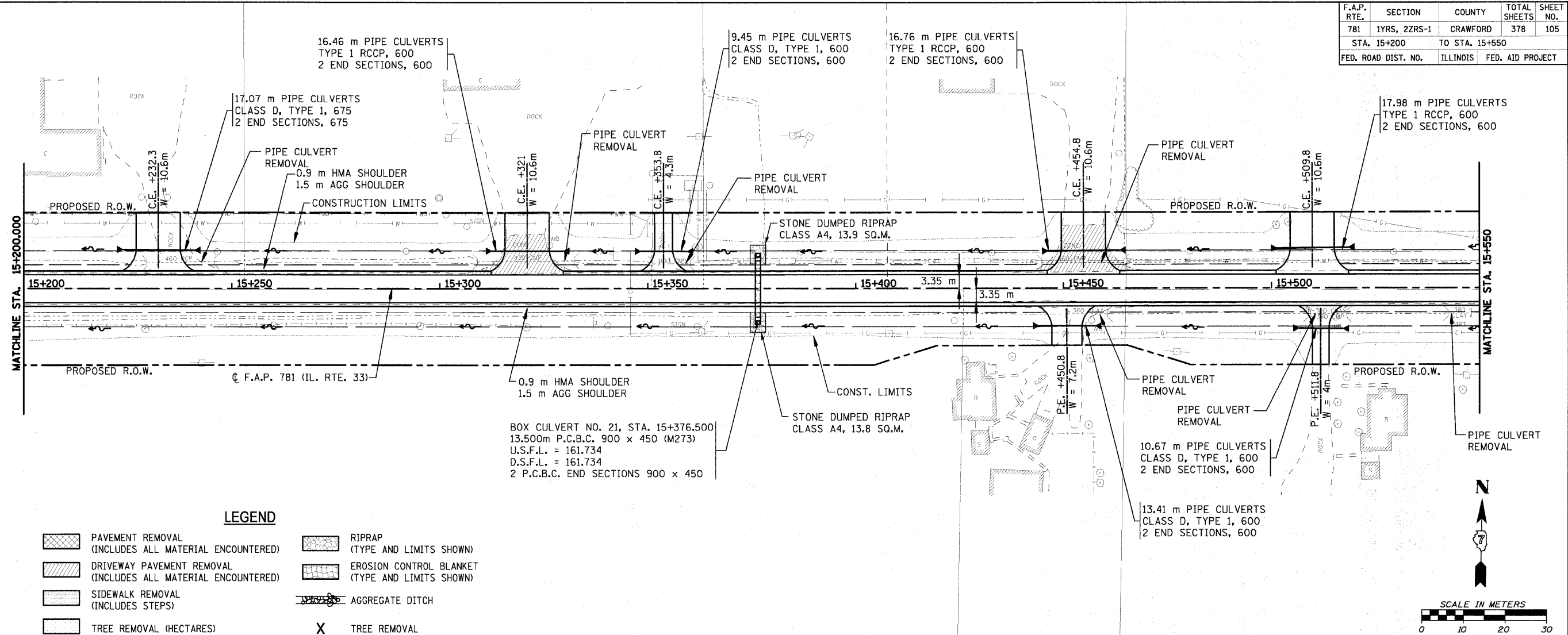
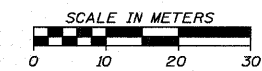


F.A.P. RTE.	SECTION	COUNTY	TOTAL SHEETS	SHEET NO.
781	1YRS, 2ZRS-1	CRAWFORD	378	105
STA. 15+200		TO STA. 15+550		
FED. ROAD DIST. NO.		ILLINOIS	FED. AID PROJECT	

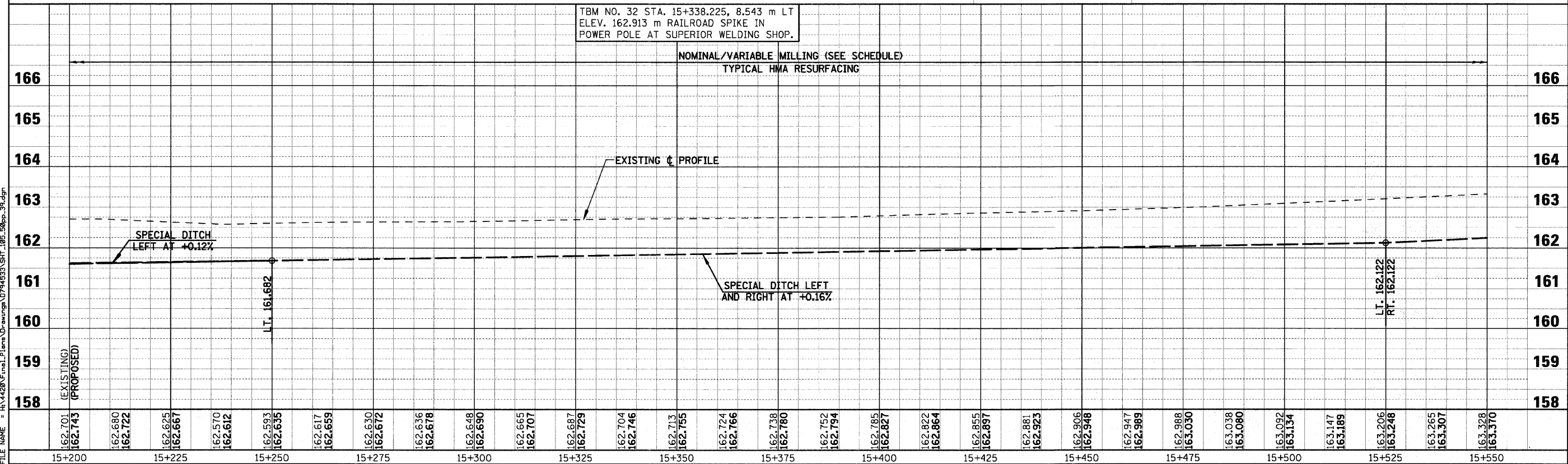


LEGEND

- PAVEMENT REMOVAL (INCLUDES ALL MATERIAL ENCOUNTERED)
- DRIVEWAY PAVEMENT REMOVAL (INCLUDES ALL MATERIAL ENCOUNTERED)
- SIDEWALK REMOVAL (INCLUDES STEPS)
- TREE REMOVAL (HECTARES)
- RIPRAP (TYPE AND LIMITS SHOWN)
- EROSION CONTROL BLANKET (TYPE AND LIMITS SHOWN)
- AGGREGATE DITCH
- TREE REMOVAL



TBM NO. 32 STA. 15+338.225, 8.543 m LT
 ELEV. 162.913 m RAILROAD SPIKE IN
 POWER POLE AT SUPERIOR WELDING SHOP.



PLOT DATE = 10/28/2008
 FILE NAME = H:\4420\Final\Plans\Drawings\074533\SH1_105_50pp_39.dgn