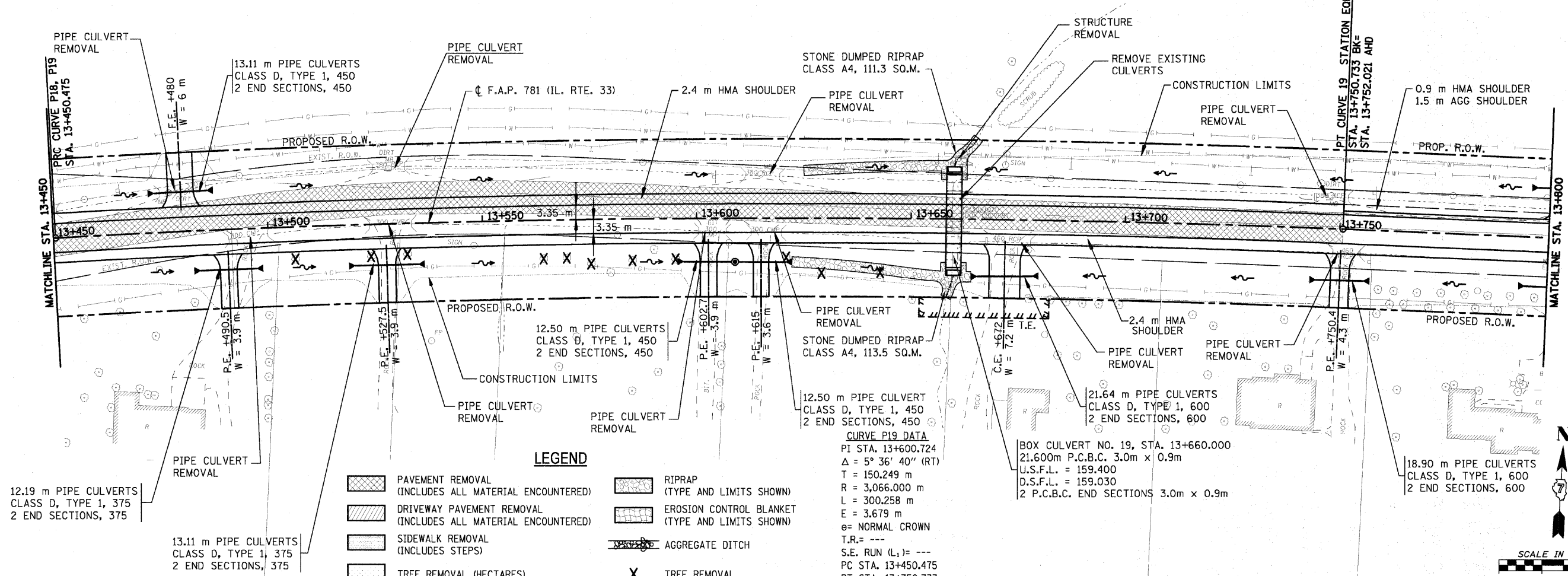


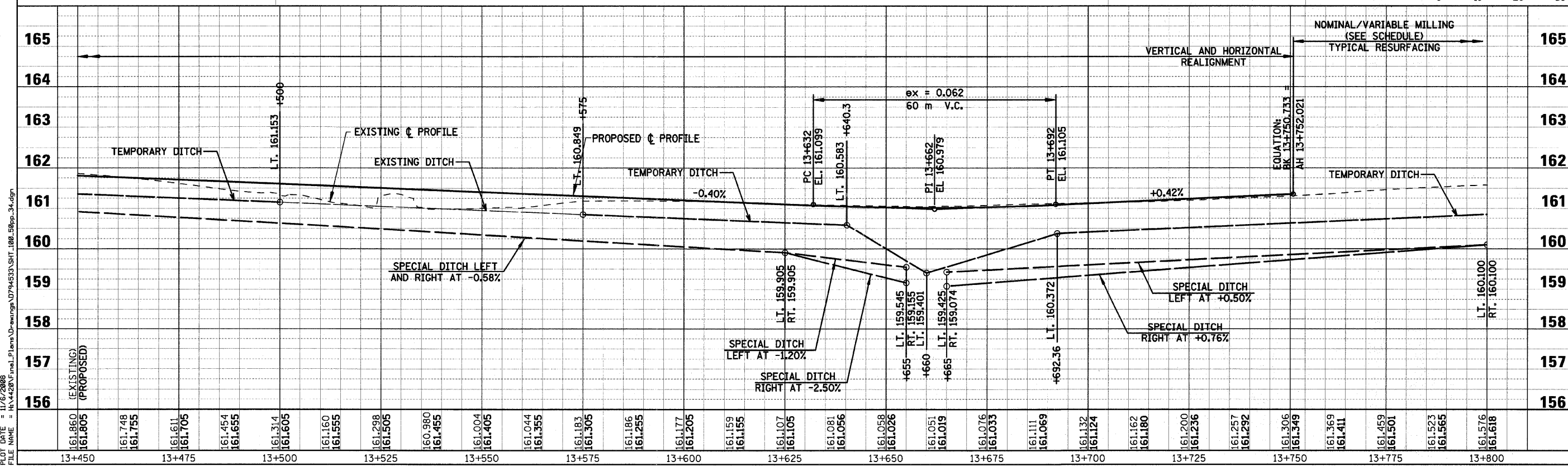
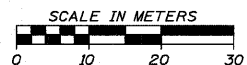
F.A.P. RTE.	SECTION	COUNTY	TOTAL SHEETS	SHEET NO.
781	1YRS, 2ZRS-1	CRAWFORD	378	100
STA. 13+450		TO STA. 13+800		
FED. ROAD DIST. NO.		ILLINOIS	FED. AID PROJECT	



LEGEND

- PAVEMENT REMOVAL (INCLUDES ALL MATERIAL ENCOUNTERED)
- DRIVEWAY PAVEMENT REMOVAL (INCLUDES ALL MATERIAL ENCOUNTERED)
- SIDEWALK REMOVAL (INCLUDES STEPS)
- TREE REMOVAL (HECTARES)
- RIPRAP (TYPE AND LIMITS SHOWN)
- EROSION CONTROL BLANKET (TYPE AND LIMITS SHOWN)
- AGGREGATE DITCH
- TREE REMOVAL

CURVE P19 DATA
 PI STA. 13+600.724
 $\Delta = 5^\circ 36' 40''$ (RT)
 T = 150.249 m
 R = 3,066.000 m
 L = 300.258 m
 E = 3.679 m
 e = NORMAL CROWN
 T.R. = ---
 S.E. RUN (L₁) = ---
 PC STA. 13+450.475
 PT STA. 13+750.733



PLOT DATE = 11/16/2008
 FILE NAME = H:\4420\Final_Plans\Drawings\0794533\SH1_100_50pp_34.dgn

Sheet: 50pp_34.dgn
 Angle: 3.2509
 Chair: P_1133
 11/6/2008

P&M JOB NO. 4420