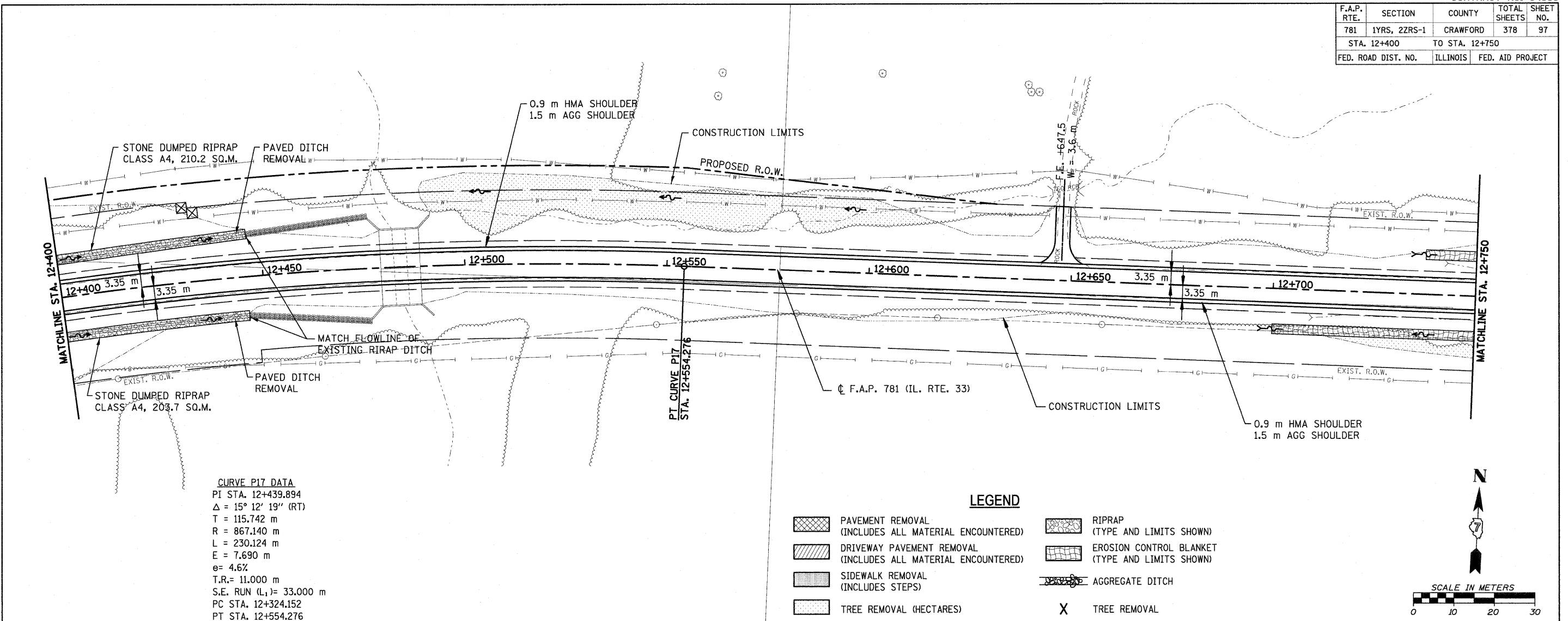


F.A.P. RTE.	SECTION	COUNTY	TOTAL SHEETS	SHEET NO.
781	1YRS, 2ZRS-1	CRAWFORD	378	97
STA. 12+400		TO STA. 12+750		
FED. ROAD DIST. NO.	ILLINOIS	FED. AID PROJECT		



CURVE P17 DATA
 PI STA. 12+439.894
 $\Delta = 15^\circ 12' 19''$ (RT)
 T = 115.742 m
 R = 867.140 m
 L = 230.124 m
 E = 7.690 m
 $e = 4.6\%$
 T.R. = 11.000 m
 S.E. RUN (L₁) = 33.000 m
 PC STA. 12+324.152
 PT STA. 12+554.276

