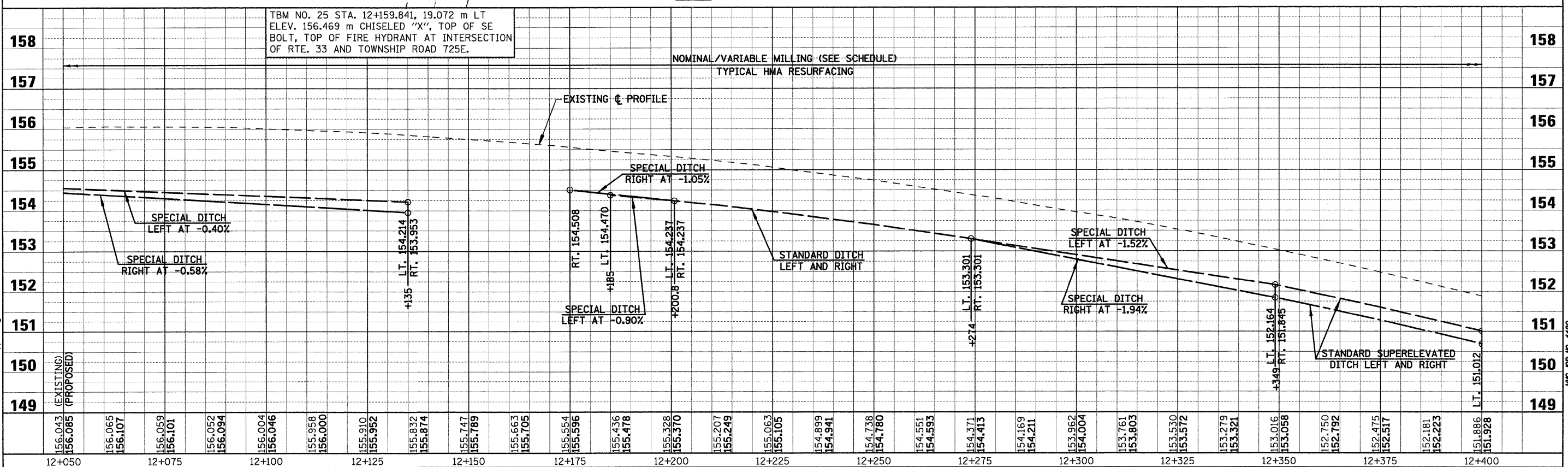
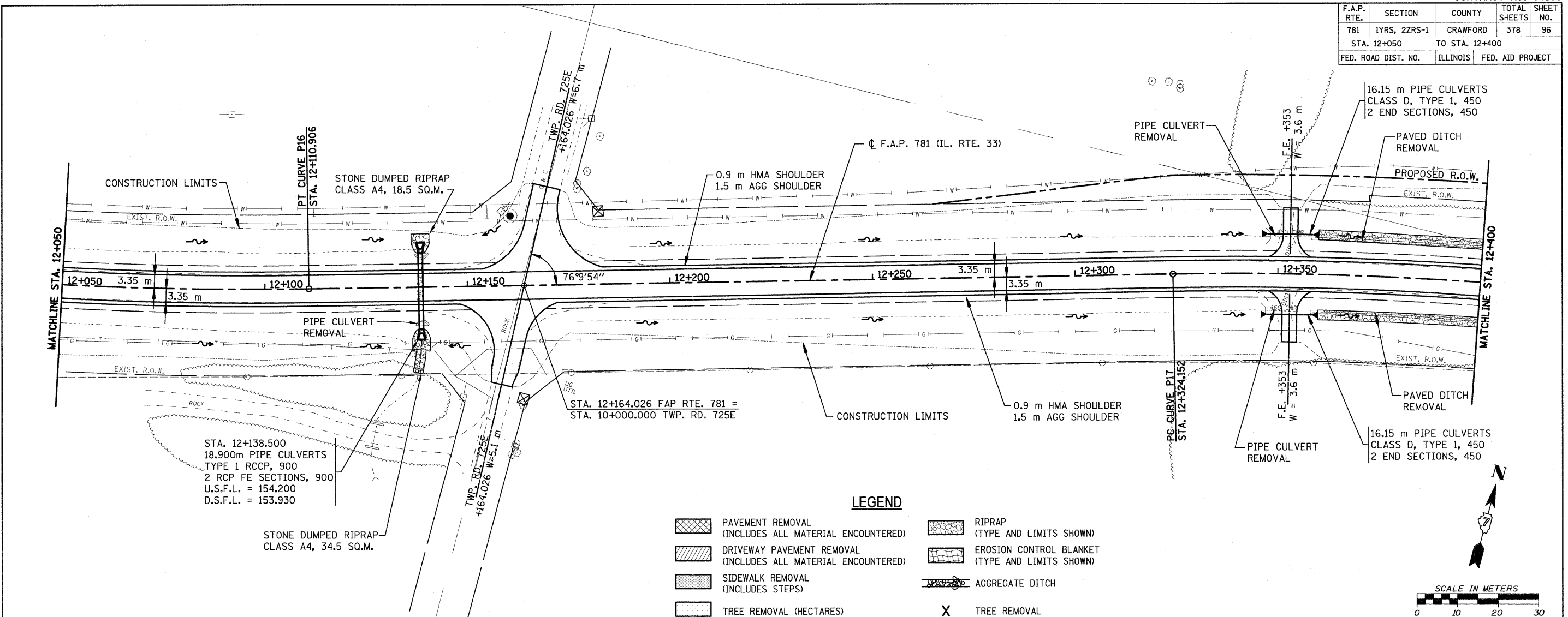


F.A.P. RTE.	SECTION	COUNTY	TOTAL SHEETS	SHEET NO.
781	1YRS, 2ZRS-1	CRAWFORD	378	96
STA. 12+050		TO STA. 12+400		
FED. ROAD DIST. NO.	ILLINOIS	FED. AID PROJECT		



TBM NO. 25 STA. 12+159.841, 19.072 m LT ELEV. 156.469 m CHISELED "X", TOP OF SE BOLT, TOP OF FIRE HYDRANT AT INTERSECTION OF RTE. 33 AND TOWNSHIP ROAD 725E.

PLOT DATE = 4/19/2008
FILE NAME = HA\1428\700\96_50pp_30.dgn