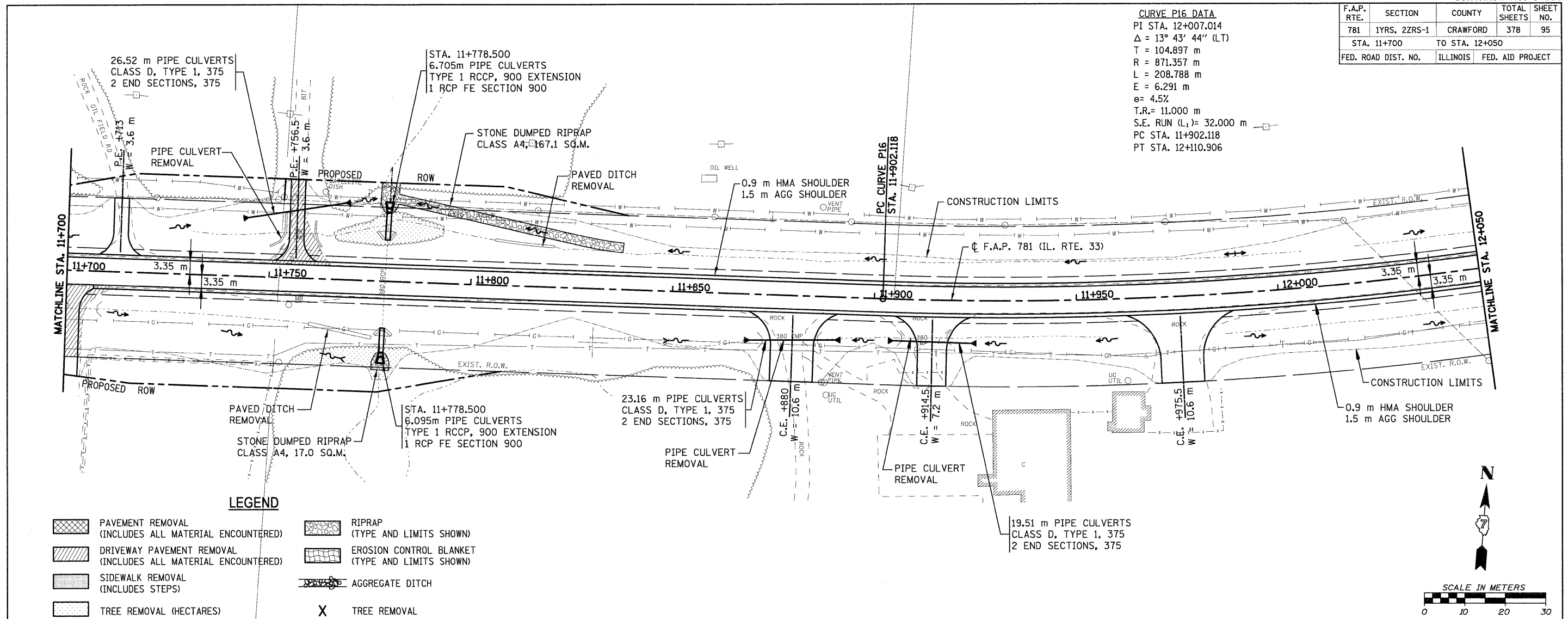


F.A.P. RTE.	SECTION	COUNTY	TOTAL SHEETS	SHEET NO.
781	1YRS, 2ZRS-1	CRAWFORD	378	95
STA. 11+700		TO STA. 12+050		
FED. ROAD DIST. NO.		ILLINOIS	FED. AID PROJECT	

**CURVE P16 DATA**

PI STA. 12+007.014  
 $\Delta = 13^\circ 43' 44''$  (LT)  
 T = 104.897 m  
 R = 871.357 m  
 L = 208.788 m  
 E = 6.291 m  
 $e = 4.5\%$   
 T.R. = 11.000 m  
 S.E. RUN (L<sub>1</sub>) = 32.000 m  
 PC STA. 11+902.118  
 PT STA. 12+110.906



**LEGEND**

- PAVEMENT REMOVAL (INCLUDES ALL MATERIAL ENCOUNTERED)
- DRIVEWAY PAVEMENT REMOVAL (INCLUDES ALL MATERIAL ENCOUNTERED)
- SIDEWALK REMOVAL (INCLUDES STEPS)
- TREE REMOVAL (HECTARES)
- RIPRAP (TYPE AND LIMITS SHOWN)
- EROSION CONTROL BLANKET (TYPE AND LIMITS SHOWN)
- AGGREGATE DITCH
- TREE REMOVAL

