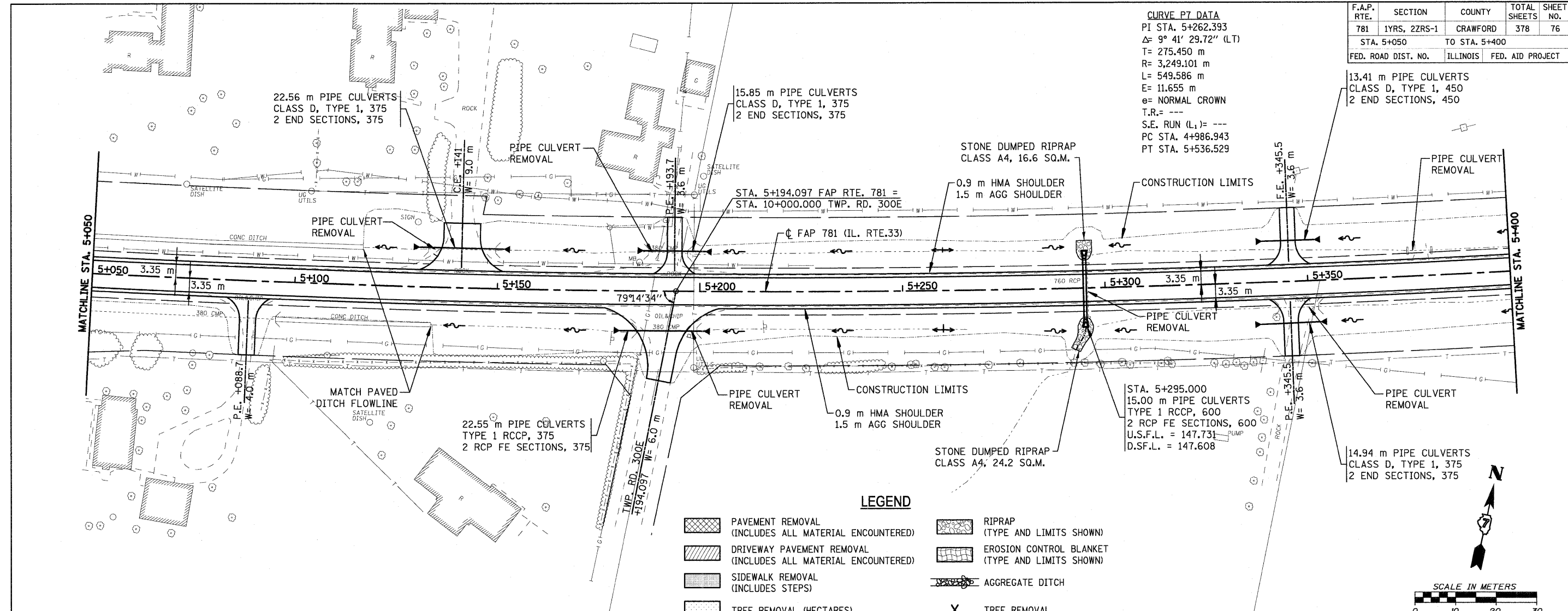


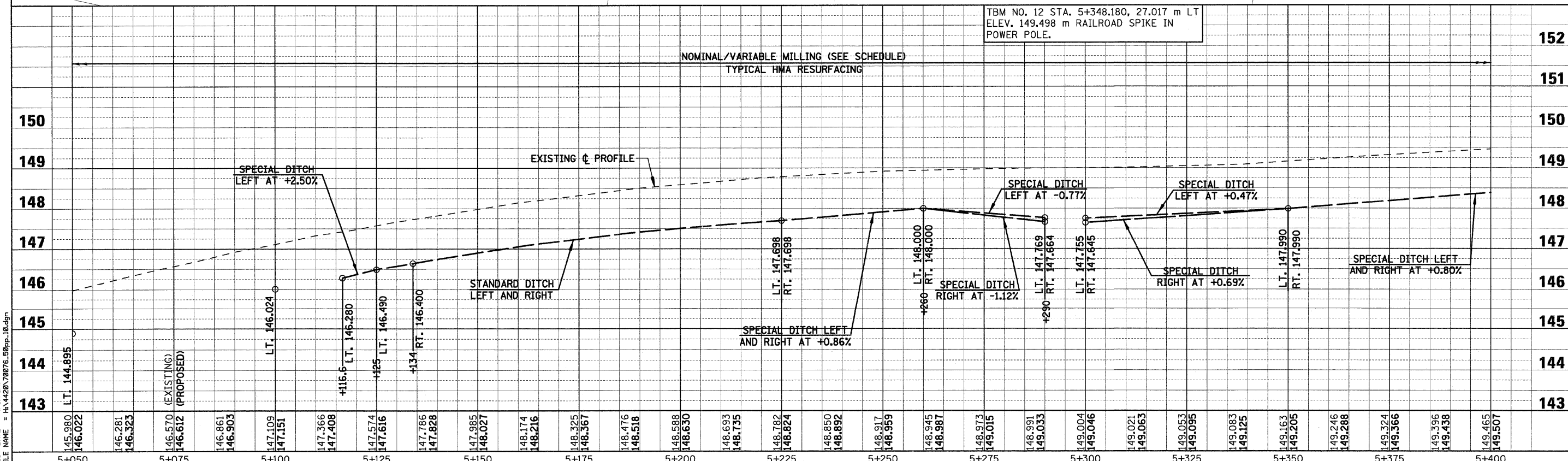
F.A.P. RTE.	SECTION	COUNTY	TOTAL SHEETS	SHEET NO.
781	1YRS, 2ZRS-1	CRAWFORD	378	76
STA. 5+050		TO STA. 5+400		
FED. ROAD DIST. NO.		ILLINOIS	FED. AID PROJECT	

CURVE PT DATA
 PI STA. 5+262.393
 $\Delta = 9^\circ 41' 29.72''$ (LT)
 T = 275.450 m
 R = 3,249.101 m
 L = 549.586 m
 E = 11.655 m
 $e =$ NORMAL CROWN
 T.R. = ---
 S.E. RUN (L₁) = ---
 PC STA. 4+986.943
 PT STA. 5+536.529



LEGEND

- PAVEMENT REMOVAL (INCLUDES ALL MATERIAL ENCOUNTERED)
- DRIVEWAY PAVEMENT REMOVAL (INCLUDES ALL MATERIAL ENCOUNTERED)
- SIDEWALK REMOVAL (INCLUDES STEPS)
- TREE REMOVAL (HECTARES)
- RIPRAP (TYPE AND LIMITS SHOWN)
- EROSION CONTROL BLANKET (TYPE AND LIMITS SHOWN)
- AGGREGATE DITCH
- TREE REMOVAL



PLT DATE = 4/18/2008
 FILE NAME = H:\4428\78076_50pp_18.dgn