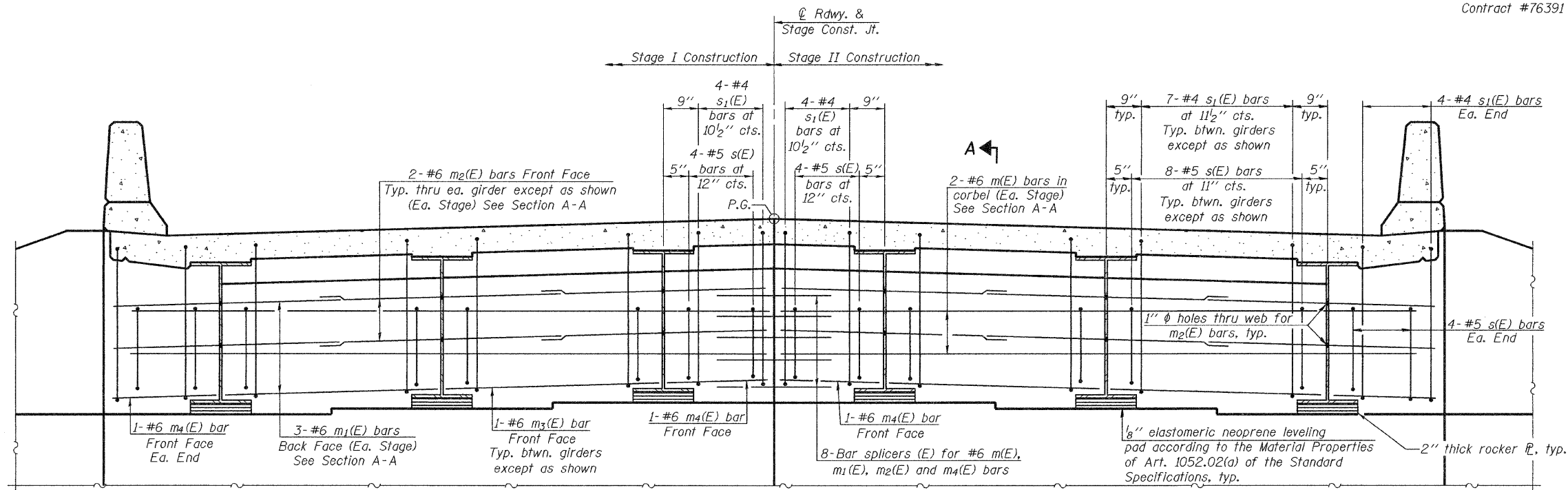


STATE OF ILLINOIS  
DEPARTMENT OF TRANSPORTATION

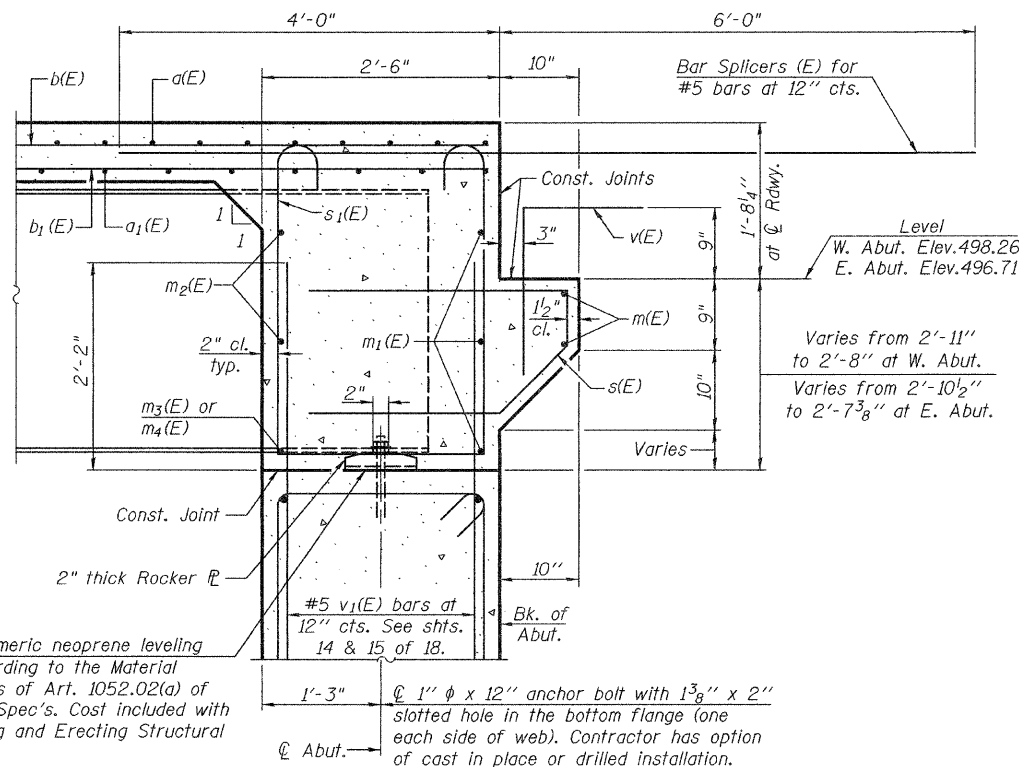
ROUTE NO.	SECTION	COUNTY	TOTAL SHEETS	SHEET NO.	SHEET NO. 12
F.A.P. 42	139BR	BOND	59	45	19 SHEETS
FED. ROAD DIST. NO. 7	ILLINOIS	FED. AID PROJECT-			

Contract #76391



**DIAPHRAGM ELEVATION AT EAST ABUTMENT**  
(Looking East-West Abutment similar)

Notes: Reinforcement bars in diaphragm are billed with superstructure on sheet 11 of 19.  
Concrete in diaphragm is included with Concrete Superstructure on sheet 11 of 19.  
For details of bars s(E) & s<sub>1</sub>(E) see sheet 11 of 19.  
See sheet 13 of 19 for holes thru web for m<sub>2</sub>(E) bars.  
For bar splicer (E) details see sheet 18 of 19.



**SECTION A-A**

**MIN. BAR LAP**  
#6 bar = 2'-7"

DESIGNED Phillip R. Litchfield  
CHECKED Nick R. Barnett  
DRAWN R. Sommer  
CHECKED P.R.L./N.R.B.

November 7, 2008  
EXAMINED Thomas J. Demagalki  
PASSED Ralph E. Anderson

**DIAPHRAGM DETAILS**  
F.A.P. ROUTE 42 - SECTION 139BR  
BOND COUNTY  
STATION 2049+33.51  
STRUCTURE NO. 003-0061