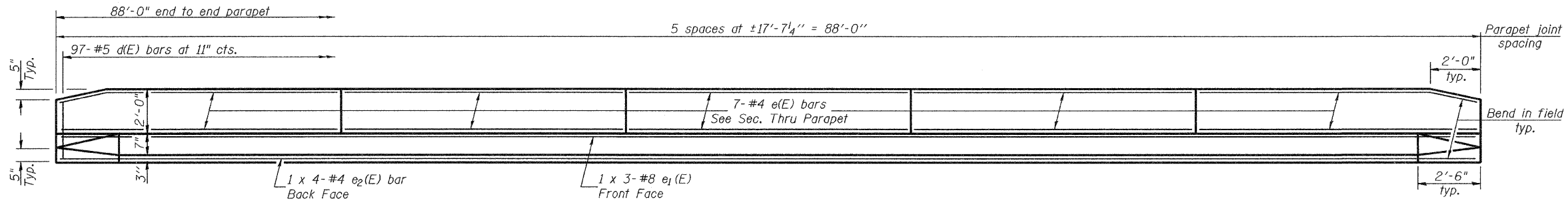


STATE OF ILLINOIS  
DEPARTMENT OF TRANSPORTATION

ROUTE NO.	SECTION	COUNTY	TOTAL SHEETS	SHEET NO.	SHEET NO. 11 19 SHEETS
F.A.P. 42	139BR	BOND	59	44	
FED. ROAD DIST. NO. 7	ILLINOIS	FED. AID PROJECT			

Contract #76391



**INSIDE ELEVATION OF PARAPET**

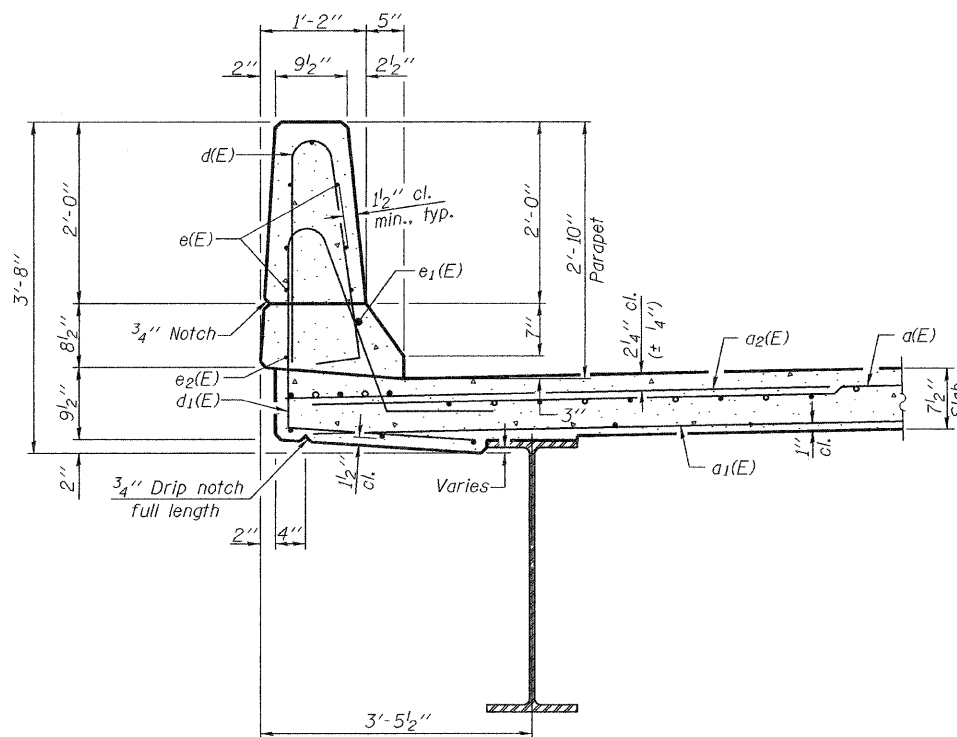
**MIN. BAR LAPS**

#4 bar = 1'-4"  
#8 bar = 3'-5"

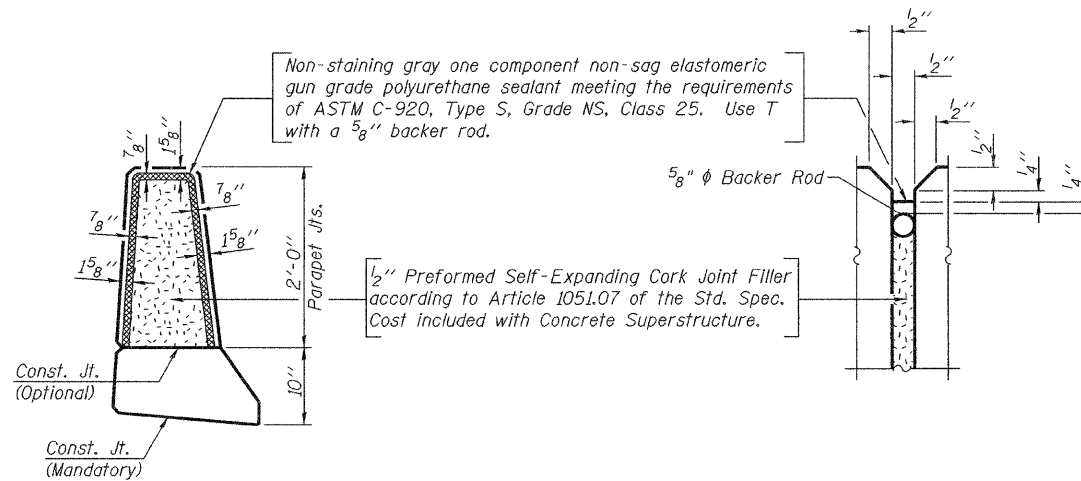
**SUPERSTRUCTURE  
BILL OF MATERIAL**

Bar	No.	Size	Length	Shape
a(E)	326	#5	21'-3"	—
a1(E)	236	#5	20'-5"	—
a2(E)	326	#6	6'-0"	—
b(E)	184	#5	23'-7"	—
b1(E)	210	#5	19'-4"	—
d(E)	194	#5	5'-7"	⌋
d1(E)	194	#5	8'-2"	⌋
e(E)	70	#4	17'-3"	—
e1(E)	6	#8	31'-6"	—
e2(E)	8	#4	22'-11"	—
m(E)	8	#6	20'-5"	—
m1(E)	12	#6	21'-3"	—
m2(E)	24	#6	8'-10"	—
m3(E)	8	#6	7'-0"	—
m4(E)	8	#6	3'-3"	—
s(E)	96	#5	6'-10"	⌋
s1(E)	88	#4	10'-4"	⌋
v(E)	84	#5	3'-4"	⌋
Reinforcement Bars, Epoxy Coated			Lbs.	30,820
Concrete Superstructure			Cu. Yds.	143

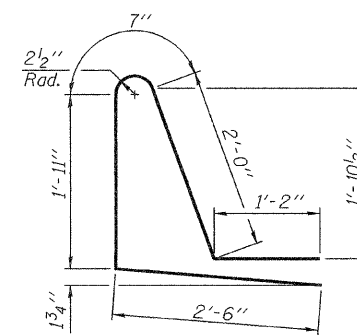
Bars indicated thus 1 x 3-#8 etc. indicates 1 line of bars with 3 lengths per line.



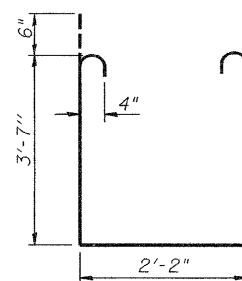
**SECTION THRU PARAPET**



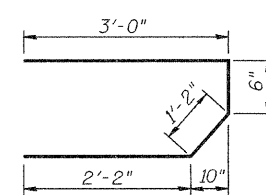
**PARAPET JOINT DETAILS**



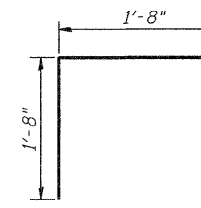
**BAR d1(E)**



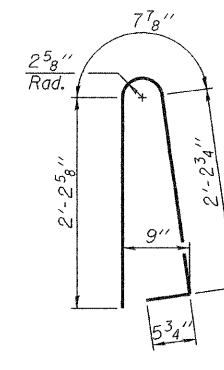
**BAR s1(E)**



**BAR s(E)**



**BAR v(E)**



**BAR d(E)**

**SUPERSTRUCTURE DETAILS**  
F.A.P. ROUTE 42 - SECTION 139BR  
BOND COUNTY  
STATION 2049+33.51  
STRUCTURE NO. 003-0061

DESIGNED Phillip R. Litchfield  
CHECKED Nick R. Barnett  
DRAWN R. Sommer DML  
CHECKED P.R.L./N.R.B.

November 7, 2008  
EXAMINED Thomas J. Domagalick  
PASSED Ralph E. Anderson