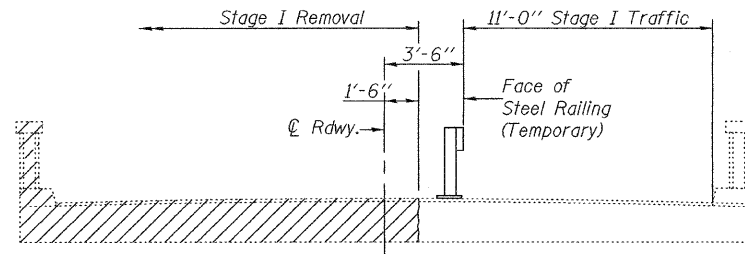


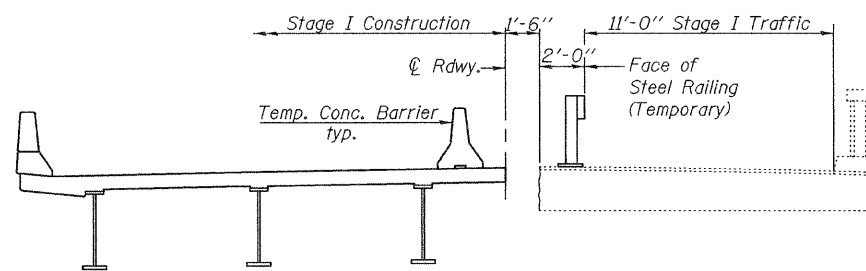
STATE OF ILLINOIS
DEPARTMENT OF TRANSPORTATION

ROUTE NO.	SECTION	COUNTY	TOTAL SHEETS	SHEET NO.	SHEET NO. 2
F.A.P. 42	139BR	BOND	59	35	19 SHEETS
FED. ROAD DIST. NO. 7	ILLINOIS	FED. AID PROJECT			

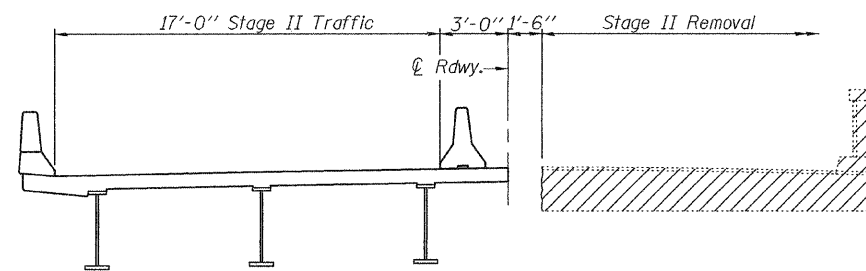
Contract #76391



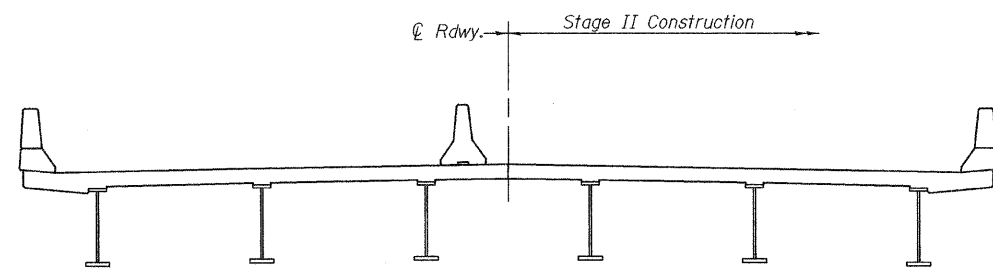
STAGE I REMOVAL
(Looking East)



STAGE I CONSTRUCTION
(Looking East)

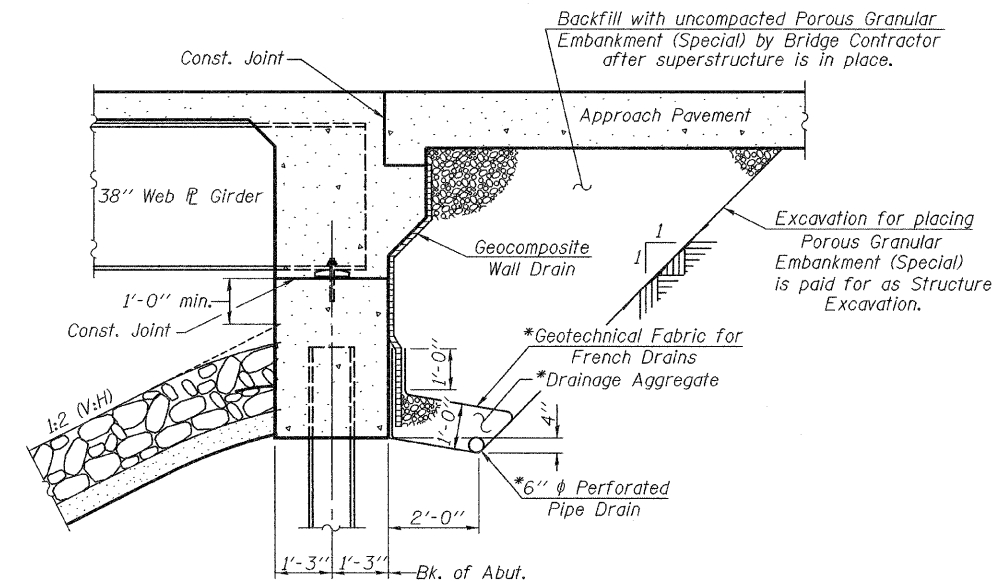


STAGE II REMOVAL
(Looking East)



STAGE II CONSTRUCTION
(Looking East)

Notes: For quantity of Temporary Concrete Barrier, see roadway plans.
Hatched area indicates Removal of Existing Structures.
For details of Temporary Concrete Barrier see sheet 5 of 19.
For details of Steel Railing (Temporary) see sheet 4 of 19.



SECTION THRU INTEGRAL ABUTMENT

*Included in the cost of Pipe Underdrains for Structures, 4".

Note:
All drainage system components shall extend to 2'-0" from the end of each wingwall except an outlet pipe shall extend until intersecting with the side slopes. The pipes shall drain into concrete headwalls. (See Article 601.05 of the Standard Specifications and Highway Standard 601101).

DESIGNED Phillip R. Litchfield
CHECKED Nick R. Barnett
DRAWN R. Sommer
CHECKED P.R.L./N.R.B.

November 7, 2008
EXAMINED Thomas J. Domagalaki
PASSED Ralph E. Anderson

STAGE CONSTRUCTION DETAILS
F.A.P. ROUTE 42 - SECTION 139BR
BOND COUNTY
STATION 2049+33.51
STRUCTURE NO. 003-0061