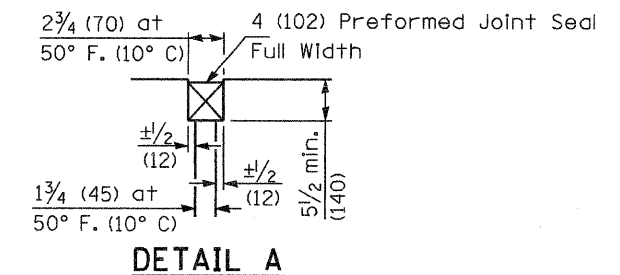
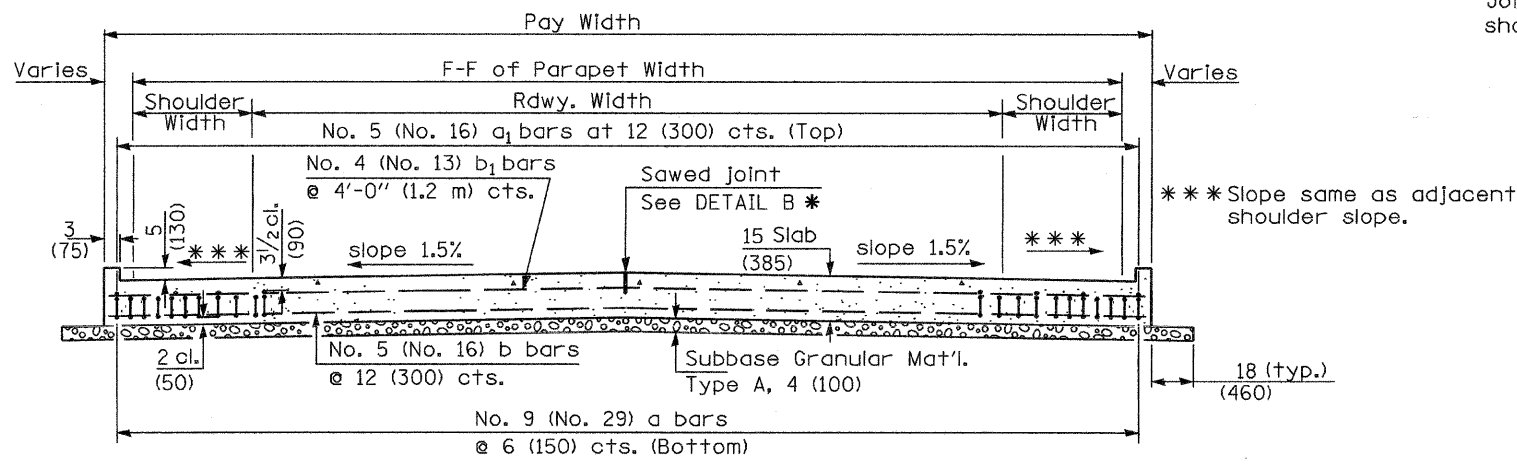


PREFORMED JOINT SEAL

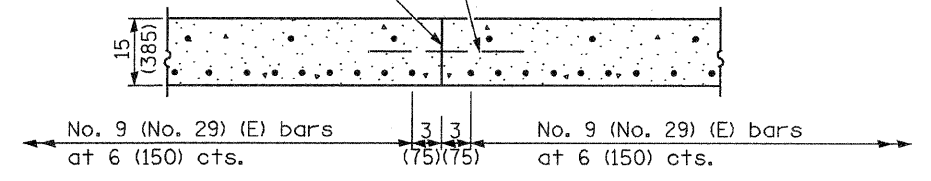


SECTION C-C
 ① Stagger No. 9 (No. 29) a bars as shown on plan - full width



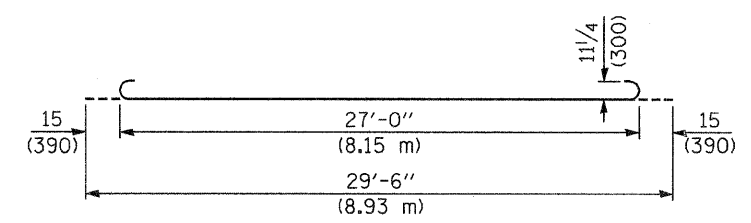
SECTION D-D
 (See Plan for Dimensions not shown)

Longitudinal Construction Joint in accordance with details shown on Standard 420001.

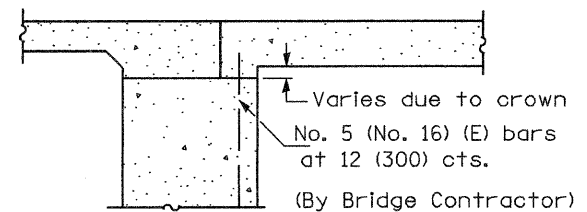


OPTIONAL LONGITUDINAL CONSTRUCTION JOINT

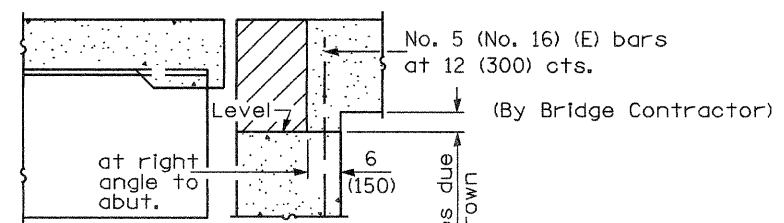
As approved by the Engineer, the Contractor may elect to reduce the widths of pour by use of the Optional Longitudinal Construction Joint shown. Joints shall be located at the edge of a traffic lane.



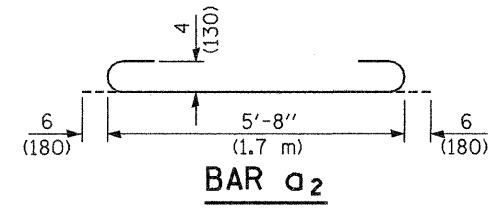
BAR a



SECTION E-E
 (Integral Abutments)



SECTION E-E
 (Jointed Abutments)



BAR a2

DESIGN STRESSES
 $f_y = 60,000$ p.s.i. (400 MPa)
 $f'_c = 3,500$ p.s.i. (24 MPa)
 $n = 8.5$

BRIDGE APPROACH PAVEMENT
 (Sheet 3 of 4)
 Contract 76391 Sheet 32

Illinois Department of Transportation
 APPROVED January 1, 2008
Ralph E. Anderson
 ENGINEER OF BRIDGES AND STRUCTURES
 APPROVED January 1, 2008
Jim E. Han
 ENGINEER OF DESIGN AND ENVIRONMENT