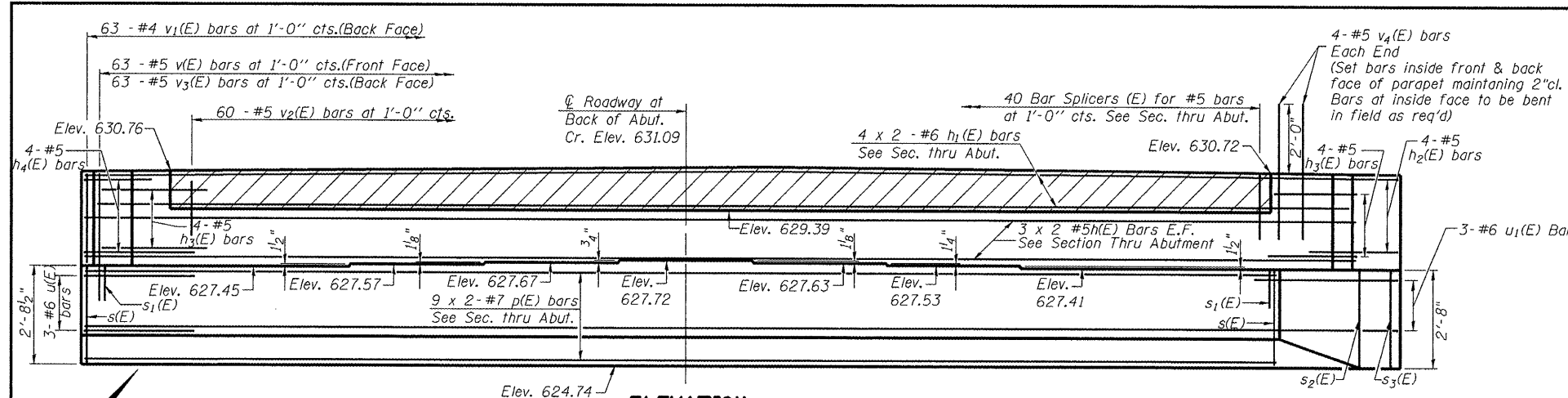
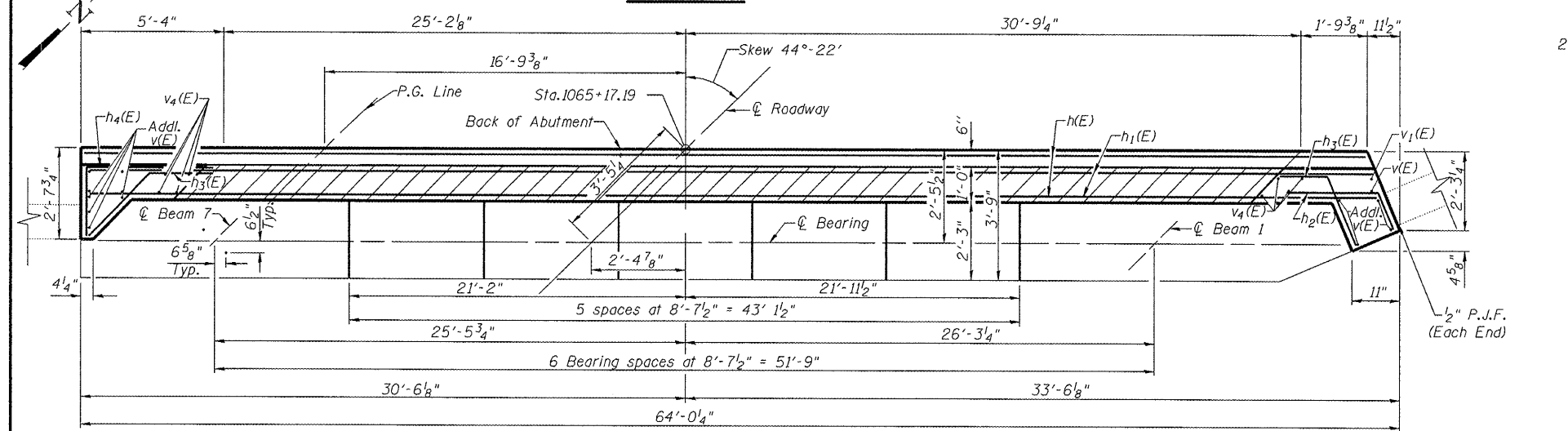


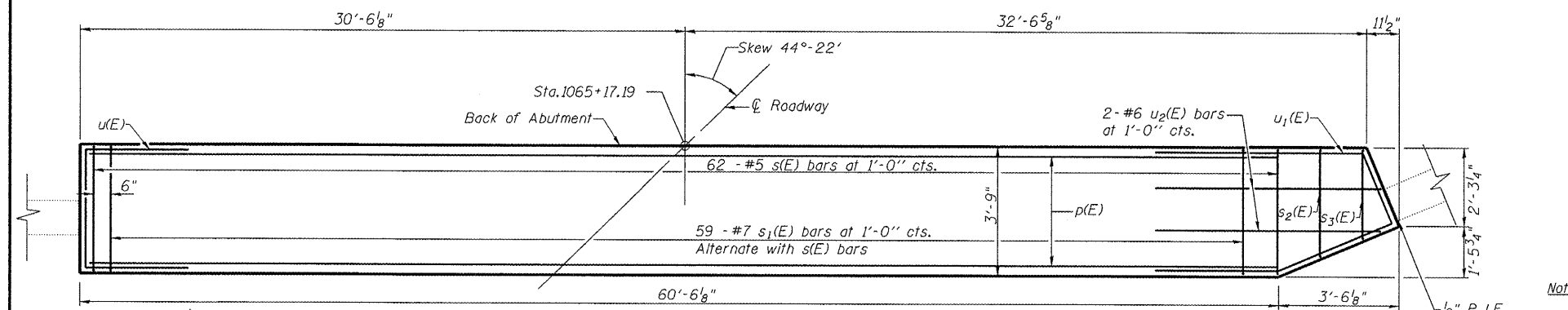
Contract #72C32



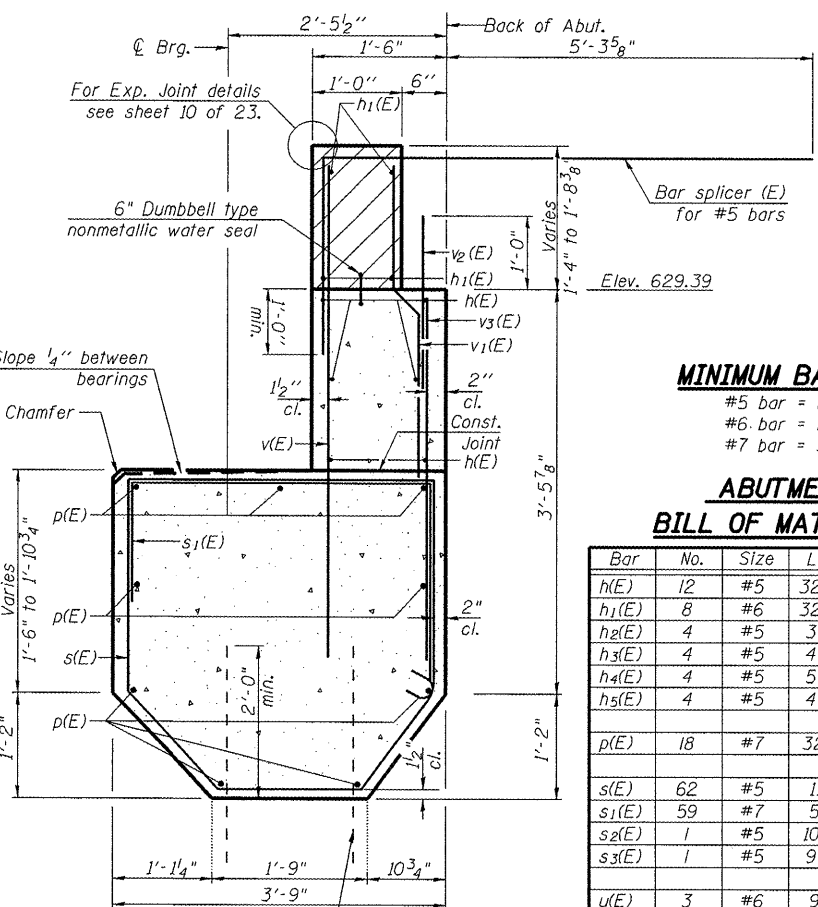
ELEVATION



TOP VIEW



PLAN-CAP



SEC. THRU ABUT.

MINIMUM BAR LAP

- #5 bar = 2'-5"
- #6 bar = 2'-10"
- #7 bar = 3'-10"

ABUTMENT BILL OF MATERIAL

| Bar | No. | Size | Length | Shape |
|-------|-----|------|---------|-------|
| h(E) | 12 | #5 | 32'-7" | — |
| h1(E) | 8 | #6 | 32'-10" | — |
| h2(E) | 4 | #5 | 3'-3" | — |
| h3(E) | 4 | #5 | 4'-5" | — |
| h4(E) | 4 | #5 | 5'-4" | — |
| h5(E) | 4 | #5 | 4'-11" | — |
| p(E) | 18 | #7 | 32'-11" | — |
| s(E) | 62 | #5 | 11'-1" | — |
| s1(E) | 59 | #7 | 5'-9" | — |
| s2(E) | 1 | #5 | 10'-4" | — |
| s3(E) | 1 | #5 | 9'-7" | — |
| u(E) | 3 | #6 | 9'-0" | — |
| u1(E) | 3 | #6 | 13'-11" | — |
| u2(E) | 2 | #6 | 13'-3" | — |
| v(E) | 71 | #5 | 5'-4" | — |
| v1(E) | 63 | #4 | 3'-6" | — |
| v2(E) | 60 | #5 | 2'-0" | — |
| v3(E) | 63 | #5 | 3'-1" | — |
| v4(E) | 8 | #5 | 4'-0" | — |

| | | |
|------------------------------------|---------|------|
| ▲ Structure Excavation | Cu. Yd. | 47 |
| ▲ Concrete Structures | Cu. Yd. | 33 |
| ▲ Reinforcement Bars, Epoxy Coated | Pound | 4590 |
| ▲ Bar Splicers | Each | 40 |
| ▲ Concrete Sealer | Sq. Ft. | 584 |

For details of Bar Splicers, see sheet 13 of 23.
Bars indicated thus 9x2-#7 etc. indicates 9 lines of bars with 2 lengths per line.
▲ For Information Only

FOR INFORMATION ONLY

Notes:
 Hatched area to be poured after superstructure false work has been removed. Quantity of concrete included with Concrete Superstructure.
 Space reinforcement in cap to miss anchor bolts. Four steps monolithically with cap.
 All exposed corners shall have a 3/4" chamfer (typ.)
 The bar splicer is to be placed parallel to the approach pavement reinforcement.

ILLINOIS DEPARTMENT OF TRANSPORTATION
NORTHBOUND NORTH ABUTMENT DETAILS
I 55 OVER MACOUPIN CREEK
F.A.I. ROUTE 55 - SEC. (68-4)F
MONTGOMERY COUNTY
STATION 1066+03.18
STRUCTURE NO. 068-0038 N.B.
STRUCTURE NO. 068-0039 S.B.
 DATE: 04-08
 REVISED:
 DRAWN BY: MLO
 CHECKED BY: PBB

