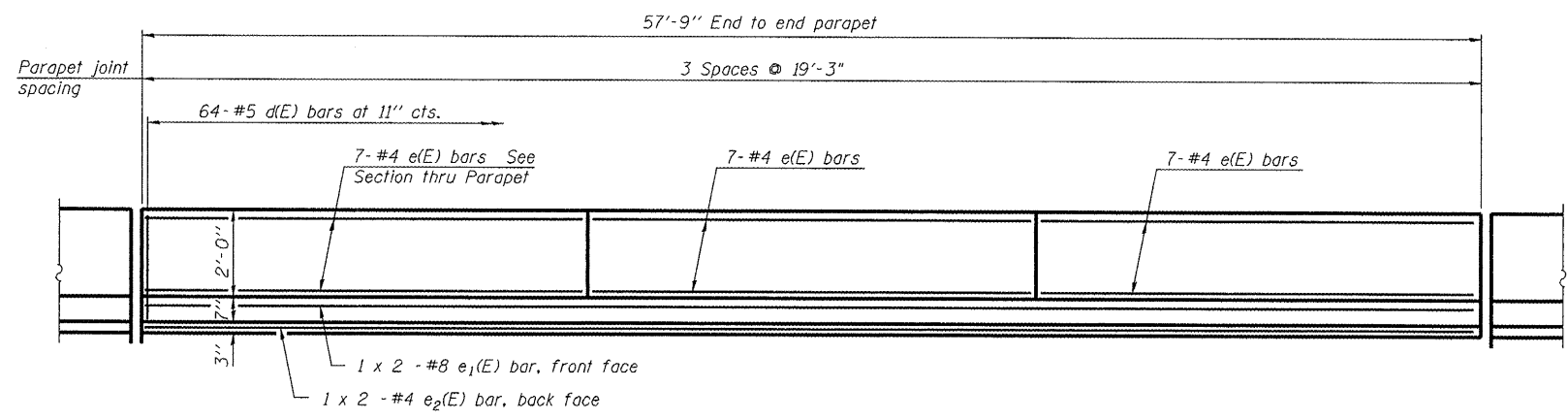


Contract #72C32

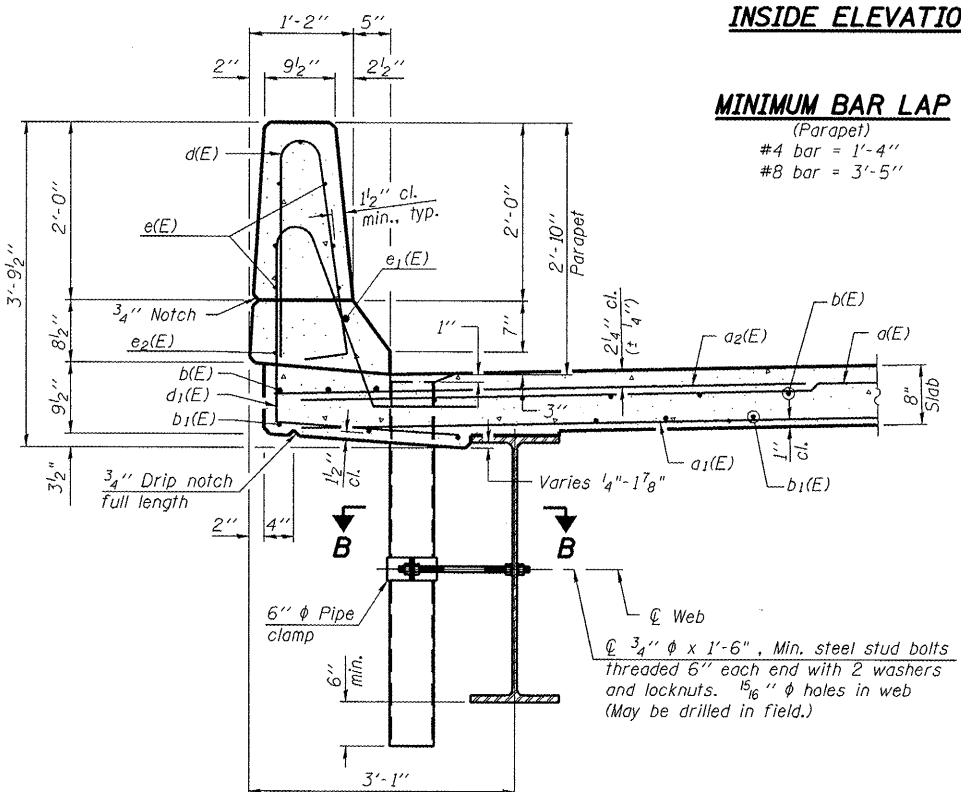
FOR INFORMATION ONLY



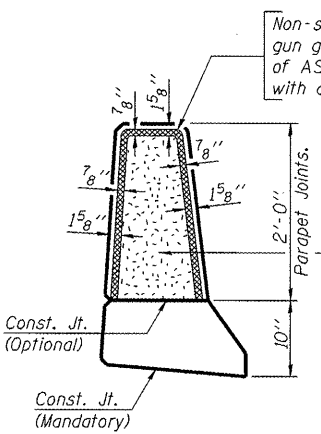
INSIDE ELEVATION OF PARAPET

MINIMUM BAR LAP

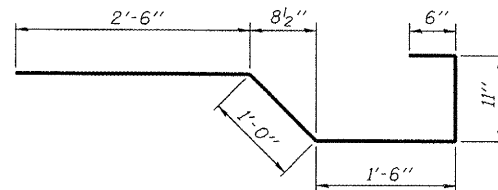
(Parapet)
#4 bar = 1'-4"
#8 bar = 3'-5"



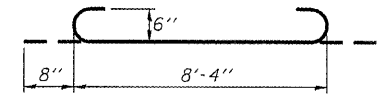
SECTION THRU PARAPET



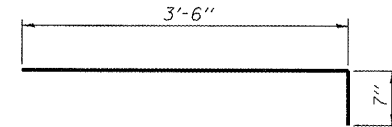
PARAPET JOINT DETAILS



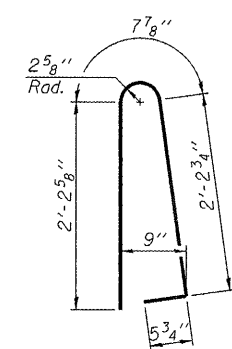
BAR x(E)



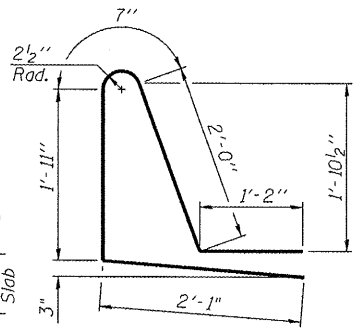
a3(E) BAR



BAR x1(E)



BAR d(E)



BAR d1(E)

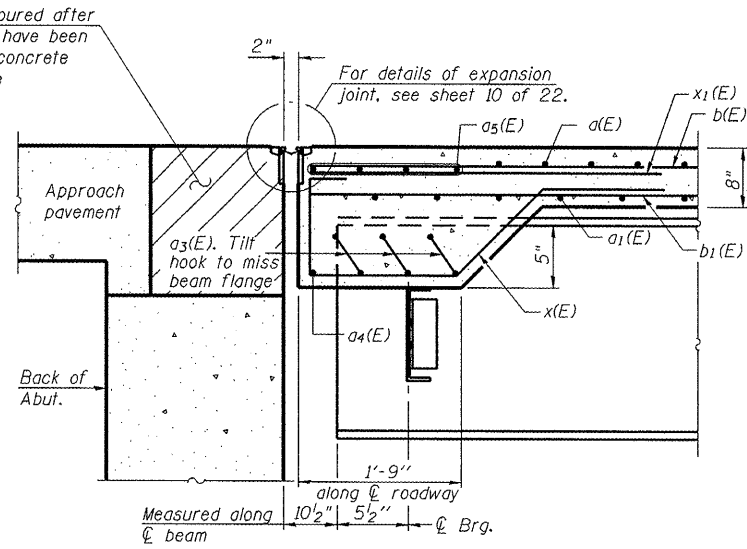
SUPERSTRUCTURE BILL OF MATERIAL (BOTH STRUCTURES)

Bar	No.	Size	Length	Shape	
a(E)	152	#5	42'-2"	—	
a1(E)	136	#5	42'-1"	—	
a2(E)	156	#6	6'-0"	—	
a3(E)	72	#6	9'-8"	—	
a4(E)	8	#6	27'-0"	—	
a5(E)	32	#6	31'-0"	—	
b(E)	184	#5	29'-7"	—	
b1(E)	216	#5	20'-3"	—	
d(E)	256	#5	5'-7"	—	
d1(E)	240	#5	7'-9"	—	
e(E)	84	#4	18'-11"	—	
e1(E)	8	#8	30'-6"	—	
e2(E)	8	#4	29'-6"	—	
x(E)	160	#5	6'-5"	—	
x1(E)	176	#5	4'-1"	—	
▲ Reinforcement Bars, Epoxy Coated				Pound	34,290
▲ Concrete Superstructure				Cu. Yds.	154.9
▲ Floor Drains				Each	12
▲ Bridge Deck Grooving				Sq. Yd.	488
▲ Protective Coat				Sq. Yd.	610

▲ For Information Only
Bars indicated thus 1 x 2 -#5 etc. Indicates 1 line of bars with 2 lengths per line.

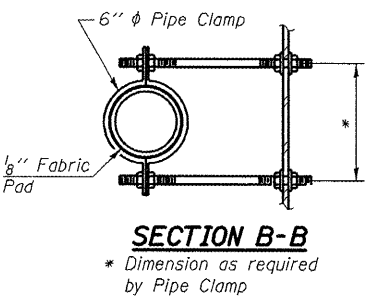
ILLINOIS DEPARTMENT OF TRANSPORTATION
SUPERSTRUCTURE DETAILS
I 55 OVER MACOUPIN CREEK
F.A.I. ROUTE 55 - SEC. (68-4)F
MONTGOMERY COUNTY
STATION 1066+03.18
STRUCTURE NO. 068-0038 N.B.
STRUCTURE NO. 068-0039 S.B.

DATE: 04-08
REVISED:
DRAWN BY: M.L.O.
CHECKED BY: P.B.B.



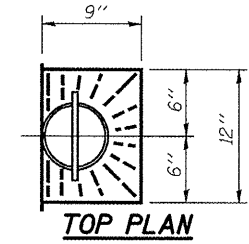
SECTION A-A

Notes: Drains shall be located clear of all diaphragms. The floor drains need not be painted. Fiberglass pipe shall conform to ASTM D 2996, with short-time rupture strength hoop tensile stress of 30,000 p.s.i. minimum.

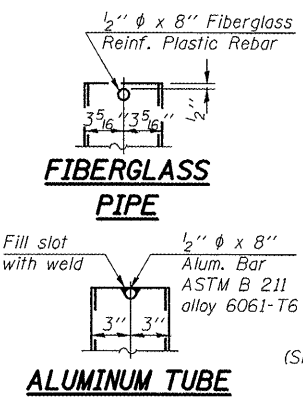


SECTION B-B

* Dimension as required by Pipe Clamp

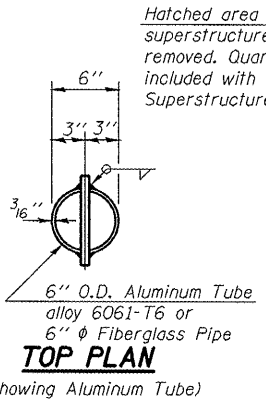


TOP PLAN



FIBERGLASS PIPE

ALUMINUM TUBE



TOP PLAN

(Showing Aluminum Tube)