

STATE OF ILLINOIS
DEPARTMENT OF TRANSPORTATION
DIVISION OF HIGHWAYS

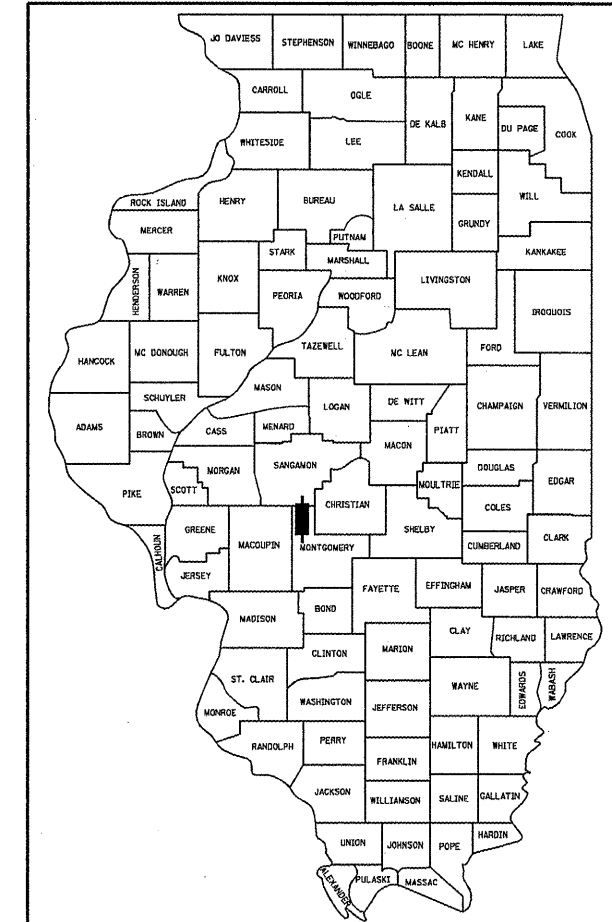
**PROPOSED
HIGHWAY PLANS**

**FAI 55 (I-55)
SECTION (68-4)F
PROJECT : IM-055-2(120)072
MONTGOMERY COUNTY
C-96-007-09**

F.A. RTE.	SECTION	COUNTY	TOTAL SHEETS	SHEET NO.
•	(68-4)F	MONTGOMERY	25	1
FED. ROAD DIST. NO.		ILLINOIS	CONTRACT NO. 72C32	

• FAI 55

D-96-007-09



LOCATION OF SECTION INDICATED THUS: —■—

STATE OF ILLINOIS
DEPARTMENT OF TRANSPORTATION
DIVISION OF HIGHWAYS

SUBMITTED OCT 10 20 08
Rosen - Duval
DEPUTY DIRECTOR OF HIGHWAYS, REGION ENGINEER

December 5, 20 08
Eric E. Horn
INTERIM ENGINEER OF DESIGN AND ENVIRONMENT

December 5, 20 08
Christine M. Reed
DIRECTOR OF HIGHWAYS, CHIEF ENGINEER

BLANK, WESSELINK, COOK & ASSOCIATES
ENGINEERS - CONSULTANTS
DECATUR, ILLINOIS

**PRINTED BY THE AUTHORITY
OF THE STATE OF ILLINOIS**

INDEX OF SHEETS

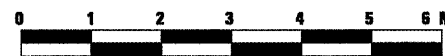
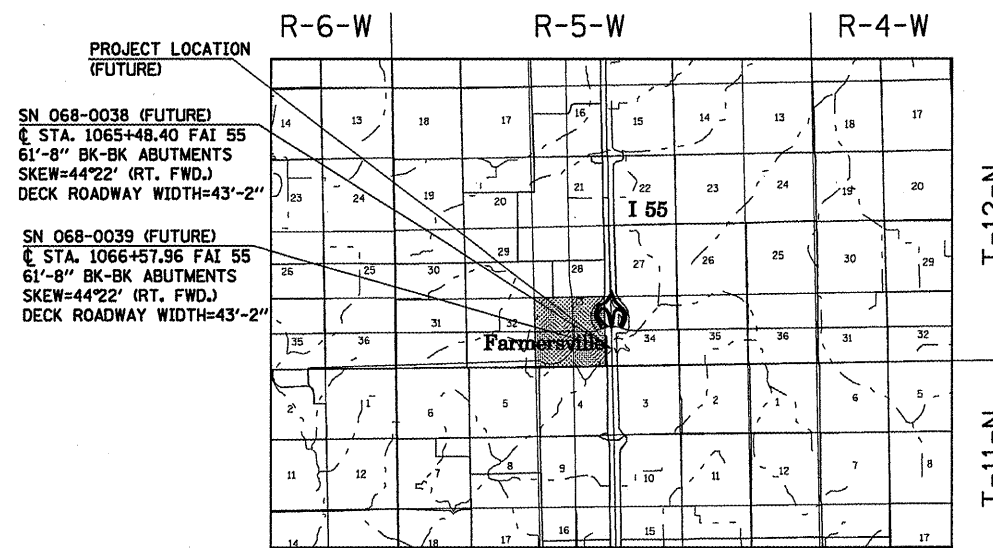
- 1 COVER SHEET
- 2 SIGNATURE BLOCK, SUMMARY OF QUANTITIES
- 3-25 BRIDGE PLANS - SN 068-0038 & SN 068-0039

HIGHWAY STANDARDS

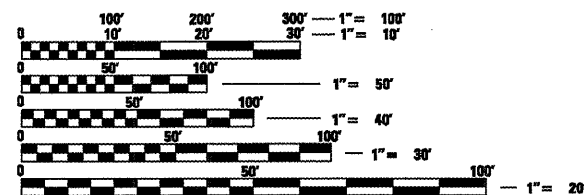
- 000001-05 STANDARD SYMBOLS, ABBREVIATIONS AND PATTERNS
- 001006 DECIMAL OF AN INCH AND OF A FOOT

PROJECT DESCRIPTION

FURNISHING AND STORAGE OF STRUCTURAL STEEL
FOR S.N. 068-0038 AND S.N. 068-0039



APPROXIMATE SCALE IN MILES



FULL SIZE PLANS HAVE BEEN PREPARED USING STANDARD
ENGINEERING SCALES. REDUCED SIZED PLANS WILL NOT
CONFORM TO STANDARD SCALES. IN MAKING MEASUREMENTS
ON REDUCED PLANS, THE ABOVE SCALES MAY BE USED.

J.U.L.I.E.
JOINT UTILITY LOCATION INFORMATION FOR EXCAVATION
1-800-892-0123
OR 811

PROJECT ENGINEER: SAL MADONIA (217) 782-4761
SQUAD LEADER: JEFF MYERS (217) 524-7940

CONTRACT NO. 72C32