

F.A.P. RTE.	SECTION	COUNTY	TOTAL SHEETS	SHEET NO.
534	(109BR)I	HENDERSON	11	1
FED. ROAD DIST. NO.		IL 94/116	CONTRACT NO. 68848	

STATE OF ILLINOIS
DEPARTMENT OF TRANSPORTATION
DIVISION OF HIGHWAYS

**PROPOSED
HIGHWAY PLANS**

FAP ROUTE 534 (IL 94/116)
SECTION (109BR)I
HENDERSON COUNTY
BRIDGE BEAM REPLACEMENTS
C-94-004-09

INDEX OF SHEETS

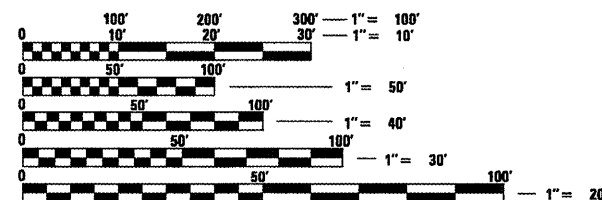
- 1 COVER SHEET
- 2 COMMITMENTS & GENERAL NOTES
- 3 SUMMARY OF QUANTITIES
- 4 TYPICAL SECTIONS
- 5 SCHEDULE OF QUANTITIES
- 6 STAGE REMOVAL AND CONSTRUCTION
- 7 PLAN VIEW
- 8 GENERAL PLAN VIEW
- 9-11 BRIDGE PLANS

LIST OF STANDARDS

635011-02 701321-10 701901-01
701301-03 704001-05
701901-01 780001-02

DESIGN DESIGNATION

ADT = 1700 (2007)
SU = 70
MU = 100



FULL SIZE PLANS HAVE BEEN PREPARED USING STANDARD ENGINEERING SCALES. REDUCED SIZED PLANS WILL NOT CONFORM TO STANDARD SCALES. IN MAKING MEASUREMENTS ON REDUCED PLANS, THE ABOVE SCALES MAY BE USED.

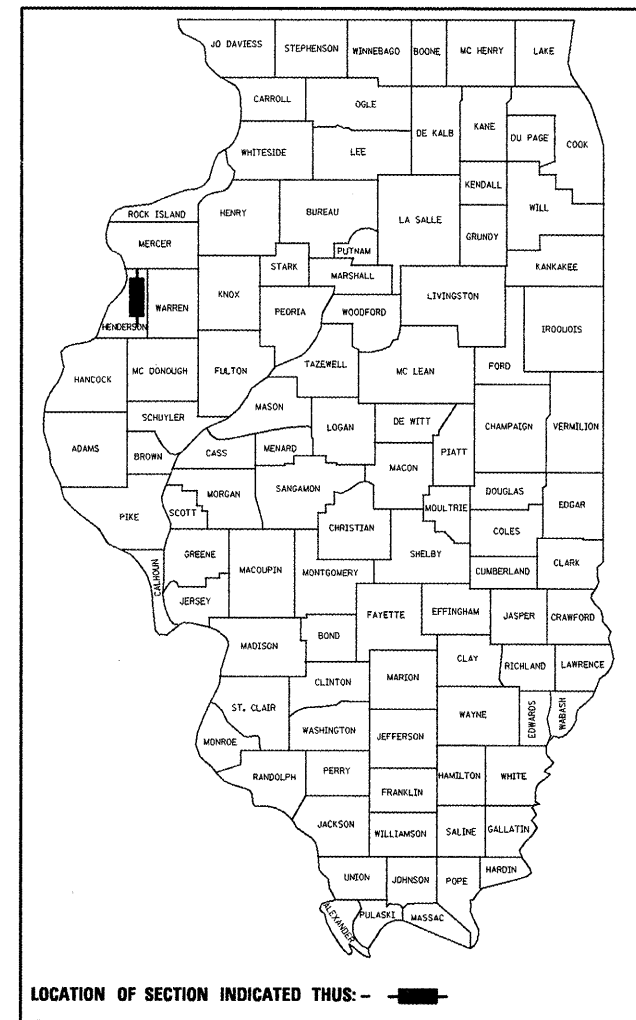
J.U.L.I.E.
JOINT UTILITY LOCATION INFORMATION FOR EXCAVATION
1-800-892-0123 OR 811

PROJECT LEADER: RICHARD DOTSON
PROJECT DESIGNER: TERRISA WORSFOLD

CONTRACT NO. 68848
CATALOG NO. 033878-00D

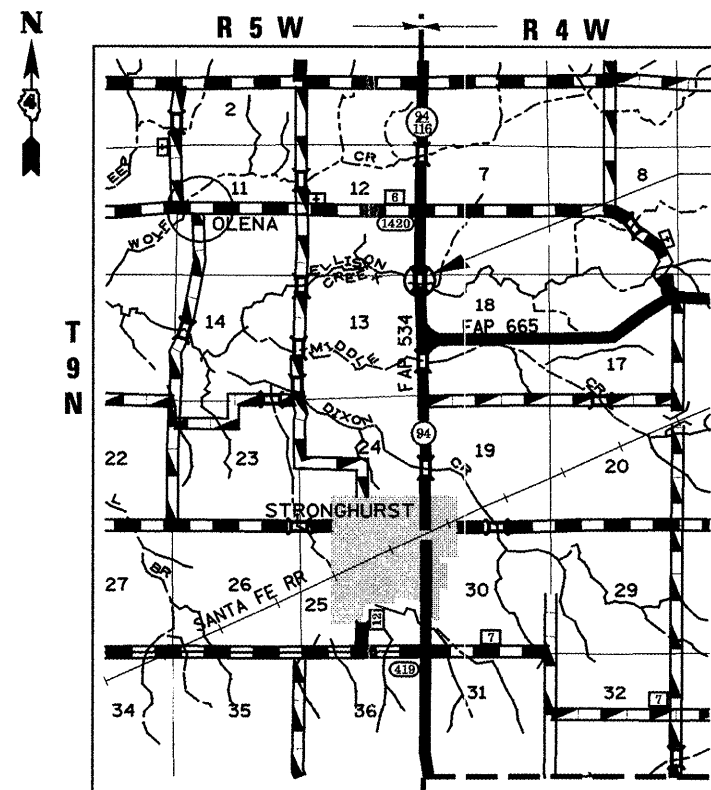
GROSS LENGTH OF PROJECT 80 FT (.02 MILES)
NET LENGTH OF PROJECT 80 FT (.02 MILES)

D-94-006-09



LOCATION OF SECTION INDICATED THUS: - [thick black line] -

DESCRIPTION:
DECK BEAM REPLACEMENT ON STRUCTURE CARRYING IL 94-116 OVER ELLISON CREEK (SN 036-0004) 1.8 MILES NORTH OF STRONGHURST



PROPOSED IMPROVEMENT

STATE OF ILLINOIS
DEPARTMENT OF TRANSPORTATION
DIVISION OF HIGHWAYS

SUBMITTED DEC 7 20 08

DEPUTY DIRECTOR OF HIGHWAYS, REGION ENGINEER
December 5, 2008
Eric E. Hamm

ENGINEER OF DESIGN AND ENVIRONMENT
Interim
December 5, 2008
Christine M. Reed

DIRECTOR OF HIGHWAYS, CHIEF ENGINEER

PRINTED BY THE AUTHORITY
OF THE STATE OF ILLINOIS

COMMITMENTS

No commitments have been made for this project.

BITUMINOUS CONCRETE MIXTURE REQUIREMENTS

The following mixture requirements are applicable for this Project: Contract 68848
IL 94/IL 116 over Ellison Creek

Mixture Use(s):	Sand Mix/Leveling Binder	Surface
AC/PG:	SBS or SBR PB 70-22	64-22
RAP % (Max)**:	0%	15%
Design Air Voids:	2.5% @ N=50	4.0% @ N=50
Mixture Composition: (Gradation Mixture)	IL 4.75	IL 9.5 or 12.5
Friction Aggregate:	N/A	Mix D

** If RAP option is selected, the asphalt cement grade may need to be adjusted; this will be determined by the Materials Engineer.

Notes: Individual lift thickness will be no less than 3 X nominal maximum aggregate size and no more than 6 X nominal maximum aggregate size.

The asphalt sand seal protection layer specified in Section 581 of the Standard Specifications shall be omitted and replaced with Leveling Binder (Hand Method), N50.

The Leveling Binder (Hand Method), N50 will be paid for separately by the ton.

GENERAL NOTES

Plan dimensions and details relative to existing structure have been taken from existing plans and are subject to nominal construction variations. It shall be the Contractor's responsibility to verify such dimensions and details in the field and make necessary approved adjustments prior to construction or ordering of materials. Such variations shall not be cause for additional compensation for a change in the scope of the work, however, the Contractor will be paid for the quantity actually furnished at the unit price bid for the work.

ENVIRONMENTAL REVIEWS

Prior to the use of any proposed borrow areas, use areas (temporary access roads, detours, run-arounds, etc.) and/or waste areas, the Contractor shall file the required environmental resource request surveys according to Section 107.22 of the Standard Specifications. These surveys are required in order for the Department to conduct cultural and biological resource surveys for the proposed site.

Prior to any waste materials being removed from the construction site the required environmental resource surveys will need to be obtained and filed by the Contractor. Excess waste products removed from the construction site shall be disposed of as required in Section 202.03 of the Standard Specifications.

Any protruding metal bars shall be removed prior to the disposal of broken concrete at approved disposal sites.

The required environmental resource documentation shall include the following:

- * BDE Form 2289 (Environmental Survey Request)
- * A location map showing the size limits and location of the use area
- * Signed property owner agreement form-D4 P10100
- * Color photographs depicting the use area
- * Borrow Area Entry Agreement form-D4 P10101

Please note that a minimum of two weeks shall be allowed for the District to obtain the required environmental clearances.

FILE NAME = c:\projects\1194bridge\plan01.dgn	USER NAME = mcfaddenjk	DESIGNED -	REVISED -	STATE OF ILLINOIS DEPARTMENT OF TRANSPORTATION	COMMITMENTS & GENERAL NOTES	F.A.P. RTE.	SECTION	COUNTY	TOTAL SHEETS	SHEET NO.	
		DRAWN -	REVISED -			534	109BRI	HENDERSON	11	2	
		CHECKED -	REVISED -			CONTRACT NO. 68848					
		DATE -	REVISED -			FED. ROAD DIST. NO. IL 94/116 FED. AID PROJECT					
		PLOT SCALE = 100.0000' / IN.			SCALE:						
		PLOT DATE = 10/23/2008									

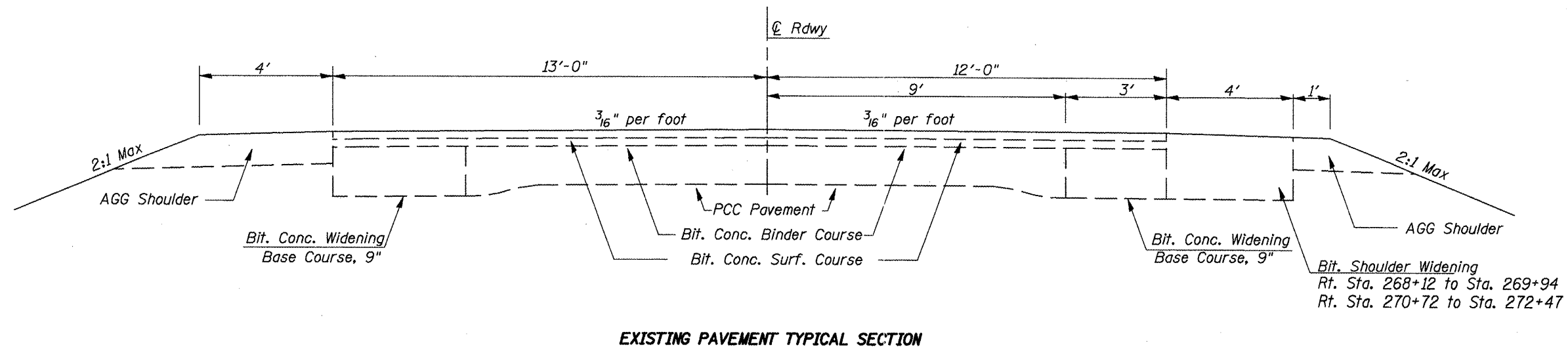
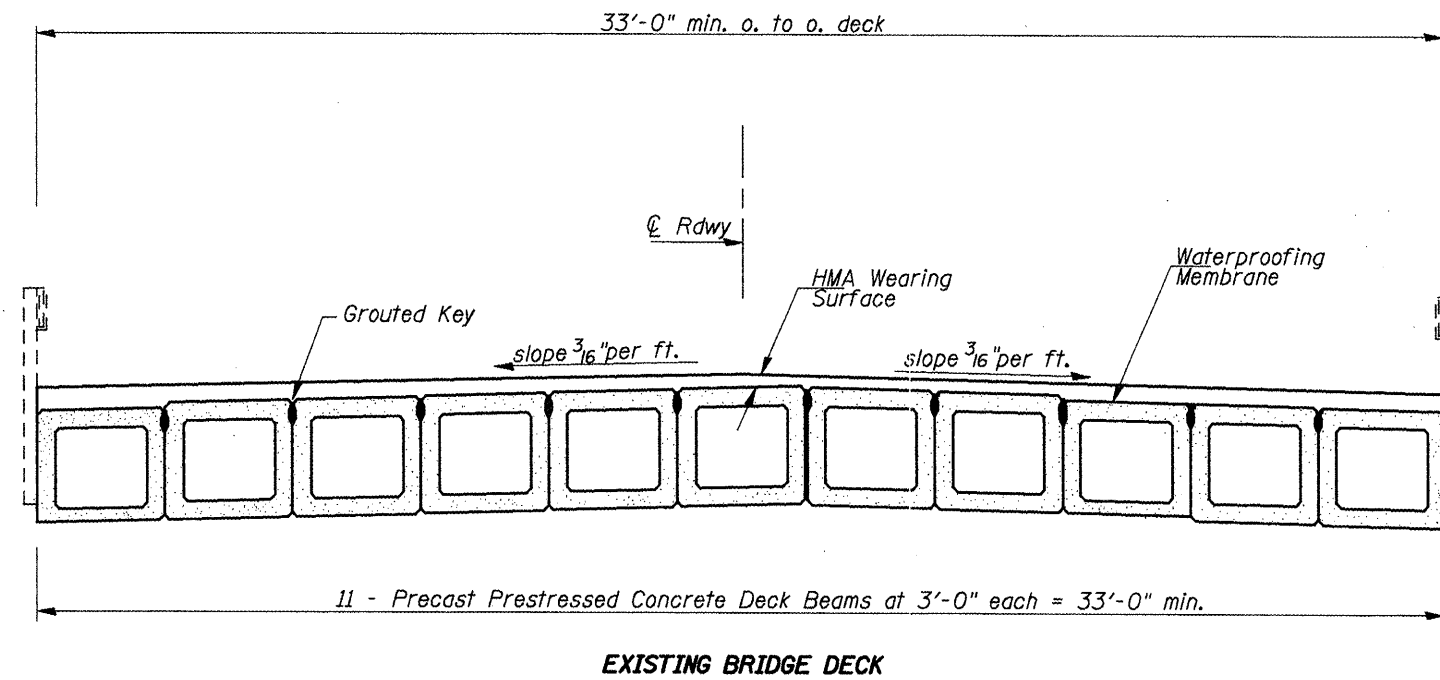
SUMMARY OF QUANTITIES

CODE NO.	ITEM	100% STATE SFTY-2A HENDERSON COUNTY		
		UNIT	RURAL	TOTAL
40600100	BITUMINOUS MATERIALS (PRIME COAT)	GALLON	1.1	1.1
40600525	LEVELING BINDER (HAND METHOD), N50	TON	3.0	3.0
40603335	HOT-MIX ASPHALT SURFACE COURSE, MIX "D", N50	TON	4.3	4.3
44001005	HOT-MIX ASPHALT SURFACE REMOVAL	SQ YD	9.1	9.1
50400605	PRECAST PRESTRESSED CONCRETE DECK BEAMS (33" DEPTH)	SQ FT	232.5	232.5
58100200	WATERPROOFING MEMBRANE SYSTEM	SQ YD	35.7	35.7
58300100	PORTLAND CEMENT MORTAR FAIRING COURSE	FOOT	159.5	159.5
67100100	MOBILIZATION	L SUM	1	1
70100405	TRAFFIC CONTROL AND PROTECTION, STANDARD 701321	EACH	1	1
70106500	TEMPORARY BRIDGE TRAFFIC SIGNALS	EACH	1	1
70106700	TEMPORARY RUMBLE STRIP	EACH	6	6
70300100	SHORT-TERM PAVEMENT MARKING	FOOT	160	160
70300520	PAVEMENT MARKING TAPE, TYPE III 4"	FOOT	988	988

CODE NO.	ITEM	100% STATE SFTY-2A HENDERSON COUNTY		
		UNIT	RURAL	TOTAL
70301000	WORK ZONE PAVEMENT MARKING REMOVAL	SQ FT	384.6	384.6
70400100	TEMPORARY CONCRETE BARRIER	FOOT	237.5	237.5
* 78001110	PAINT PAVEMENT MARKING - LINE 4"	FOOT	568.0	568.0
78300100	PAVEMENT MARKING REMOVAL	SQ FT	161.4	161.4
X0320047	REMOVAL OF EXISTING PRECAST PRESTRESSED CONCRETE DECK BEAMS	SQ FT	239.2	239.2
X7015005	CHANGEABLE MESSAGE SIGN	CAL DA	14	14
Z0001900	ASBESTOS BEARING PAD REMOVAL	EACH	1	1
Z0030250	IMPACT ATTENUATORS, TEMPORARY (NON-REDIRECTIVE), TEST LEVEL 3	EACH	2	2

* SPECIALTY ITEM

TYPICAL SECTIONS



FILE NAME =
c:\projects\194bridge\plan01.dgn

USER NAME = mcfadden,jk
PLDT SCALE = 1/8" = 1' / IN.
PLDT DATE = 10/23/2008

DESIGNED -	REVISED -
DRAWN -	REVISED -
CHECKED -	REVISED -
DATE -	REVISED -

**STATE OF ILLINOIS
DEPARTMENT OF TRANSPORTATION**

TYPICAL SECTIONS

SCALE: NONE

F.A.P. RTE.	SECTION	COUNTY	TOTAL SHEETS	SHEET NO.
534	(109BR)I	HENDERSON	11	4
CONTRACT NO. 68848				
FED. ROAD DIST. NO. IL 94/116 FED. AID PROJECT				

SCHEDULE OF QUANTITIES

LOCATIONS STA. to STA.	HMA SURF CSE MIX "D" N50	HMA SURF REM	BIT MAT (PRIME COAT)	LEVELING BINDER (HAND METHOD), N50
Bridge Deck	TON	SQ YD	GALLON	TON
269+94 to 270+72	7.0	9.1	1.1	3.0
TOTAL	7.0	9.1	1.1	3.0

Note: Additional leveling binder quantity provided for scratch passes at beam ends to compensate for beam camber.

LOCATIONS STA. to STA.	P P CONC DECK BEAM (33' DEPTH)	REM OF EXIST P P CONC DECK BEAMS
Bridge Deck	SQ FT	SQ FT
269+94 to 270+72	232.5	239.2
TOTAL	232.5	239.2

LOCATIONS STA. to STA.	WATERPROOFING MEMBRANE SYSTEM
Bridge Deck	SQ YD
269+94 to 270+72	35.7
TOTAL	35.7

LOCATIONS STA. to STA.	P C MORTAR FAIRING COURSE
Bridge Deck	FOOT
269+94 to 270+72	159.5
TOTAL	159.5

LOCATIONS STA. to STA.	PAVEMENT MARKING REMOVAL
	SQ FT
Edgeline 268+83 to 271+83	100.0
Center skips 267+29 to 268+83	13.2
271+83 to 273+43	13.2
No Passing Stripe 272+37 to 273+43	35.0
TOTAL	161.4

LOCATIONS STA. to STA.	PAVEMENT MARKING TAPE, TYPE III, 4"
	FOOT
RT Edgeline 267+39 to 272+83	544.0
LT Edgeline 268+83 to 271+83	300.0
STOP BARS	144.0
TOTAL	988.0

LOCATIONS STA. to STA.	SHORT - TERM PAVEMENT MARKING	WORK ZONE PAVEMENT MARKING REMOVAL
	FOOT	SQ FT
267+29 to 273+43	160	384.6
TOTAL	160	384.6

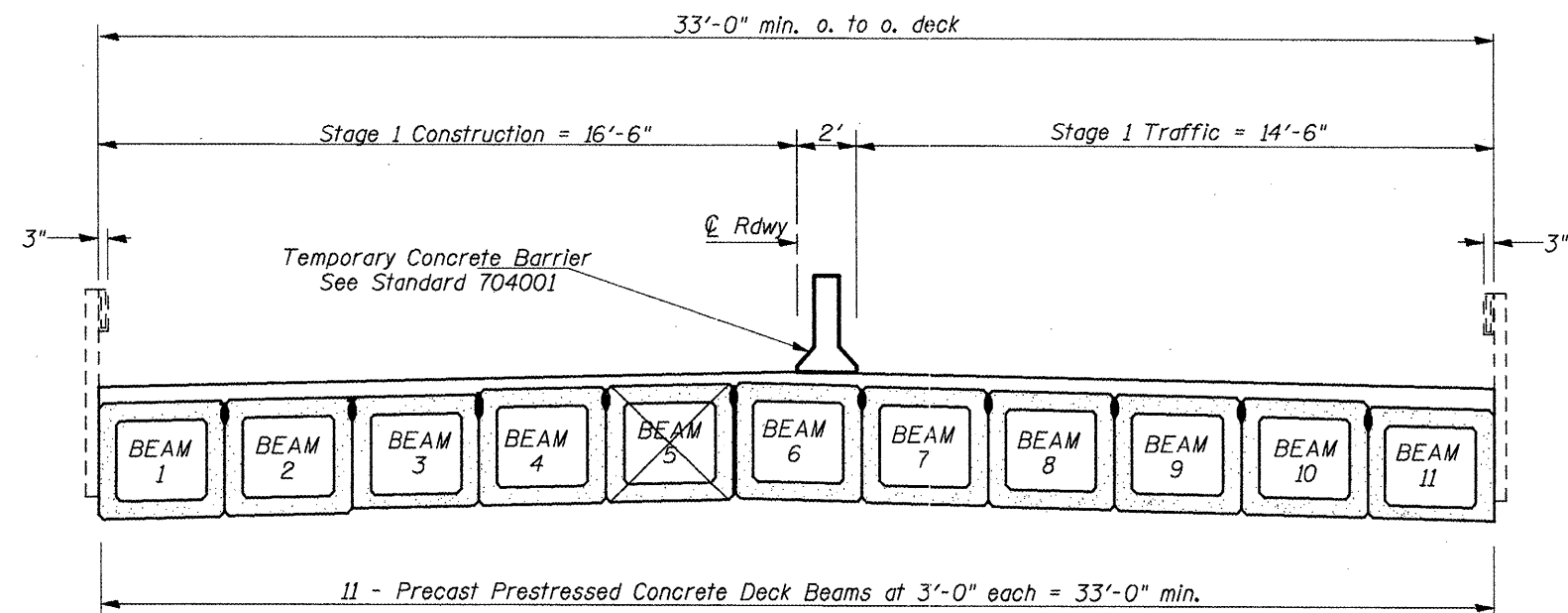
LOCATIONS STA. to STA.	TEMPORARY CONCRETE BARRIER
	FOOT
269+19 to 271+47	237.5
TOTAL	237.5

LOCATIONS STA. to STA.	IMPACT ATT TEMPORARY (NON-REDIRECTIVE), TEST LEVEL 3	TEMPORARY RUMBLE STRIP
	EACH	EACH
Jobsite	2	6
TOTAL	2	6

LOCATIONS STA. to STA.	PAINT PAVEMENT MARKING LINE 4"
	FOOT
White Edgeline 268+83 to 271+83	302.0
Yellow skipdash 267+29 to 273+43	160.0
Yellow solid no passing stripe 272+37 to 273+43	106.0
TOTAL	568.0

LOCATIONS STA. to STA.	MOBILIZATION	T C & PROT STANDARD 701321	CHANGEABLE MESSAGE SIGN	TEMPORARY BRIDGE TRAFFIC SIGNAL
	L SUM	EACH	CAL DA	EACH
Jobsite	1	1	14	1
TOTAL	1	1	14	1

STAGE REMOVAL AND CONSTRUCTION



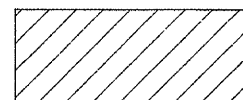
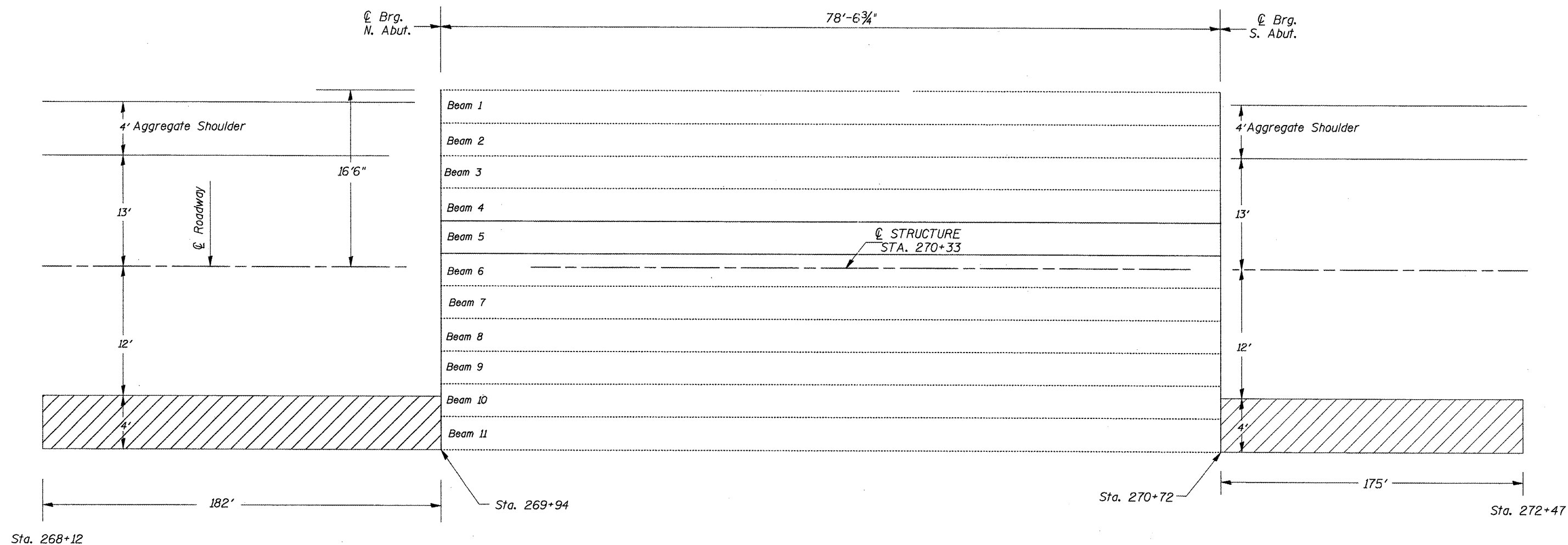
Note: Four W12-I103 signs, as described in the width restriction signing Special Provision, will be required. Two signs shall be placed at the intersection of IL 94 and IL 116, and two signs shall be placed at the intersection of IL 94 and US 34. These signs shall be located at the direction of the Engineer. The cost shall be included in the cost of TRAFFIC CONTROL AND PROTECTION STANDARD 701321.

The max width dimension for the signs is 13'-0".

FILE NAME = c:\projects\1194bridge\plan01.dgn	USER NAME = mcfaddenjk	DESIGNED -	REVISED -	STATE OF ILLINOIS DEPARTMENT OF TRANSPORTATION	STAGE REMOVAL AND CONSTRUCTION	F.A.P. RTE.	SECTION	COUNTY	TOTAL SHEETS	SHEET NO.	
		DRAWN -	REVISED -			534	(109BR)	HENDERSON	11	6	
		CHECKED -	REVISED -			CONTRACT NO. 68848					
		DATE -	REVISED -			FED. ROAD DIST. NO. IL 94/116 FED. AID PROJECT					
				SCALE: NONE							



PLAN VIEW



Existing Shoulder Widening placed in 2007

FILE NAME =
c:\projects\194bridge\plan01.dgn

USER NAME = mcfaddenjk
PLOT SCALE = 100.0000' / IN.
PLOT DATE = 10/23/2008

DESIGNED -	REVISED -
DRAWN -	REVISED -
CHECKED -	REVISED -
DATE -	REVISED -

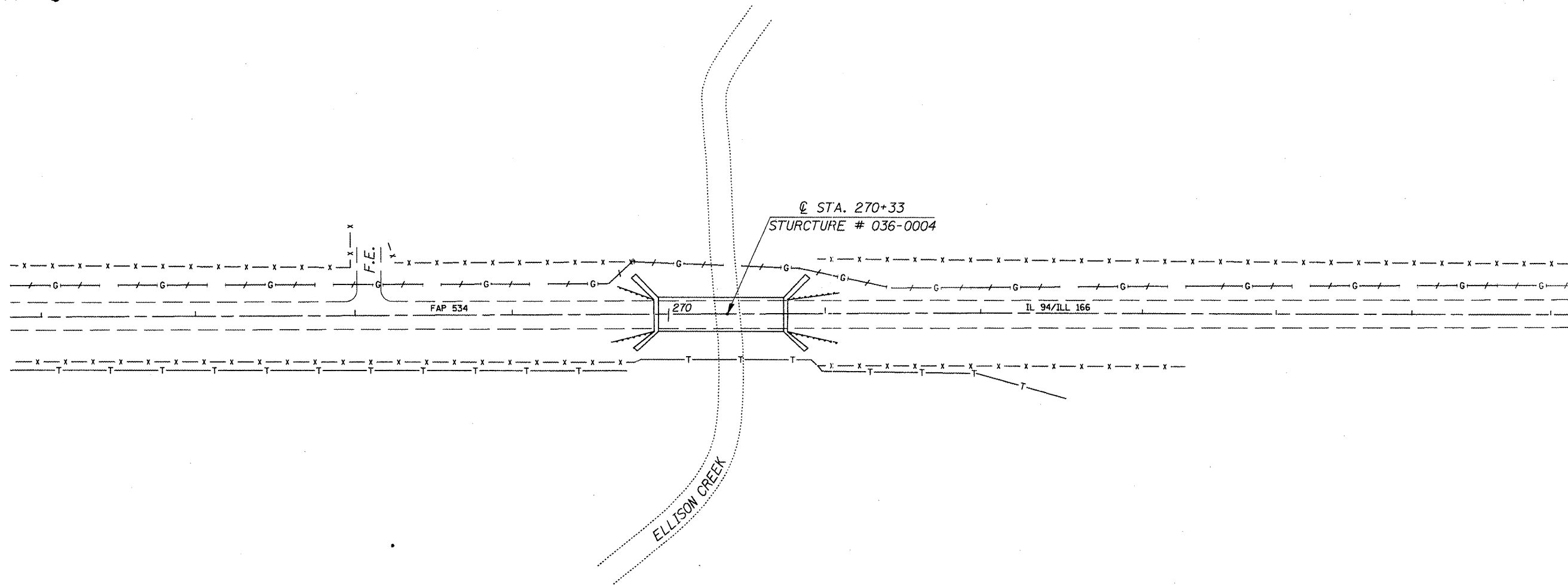
**STATE OF ILLINOIS
DEPARTMENT OF TRANSPORTATION**

PLAN VIEW

SCALE: NONE Structure Number 036-0004 STA. 270+33

F.A.P. RTE.	SECTION	COUNTY	TOTAL SHEETS	SHEET NO.
534	(109BR)I	HENDERSON	11	7
CONTRACT NO. 68848				
FED. ROAD DIST. NO. IL 94/116 FED. AID PROJECT				

GENERAL PLAN VIEW



FILE NAME =
c:\projects\194bridge\plan2L.dgn

USER NAME = mcfaddenjk	DESIGNED -	REVISED -
	DRAWN -	REVISED -
PLOT SCALE = 100.0000' / IN.	CHECKED -	REVISED -
PLOT DATE = 10/23/2008	DATE -	REVISED -

**STATE OF ILLINOIS
DEPARTMENT OF TRANSPORTATION**

GENERAL PLAN VIEW
SCALE: NONE Structure Number 036-0004 STA. 270+33

F.A.P. RTE.	SECTION	COUNTY	TOTAL SHEETS	SHEET NO.
534	(109BR)	HENDERSON	11	8
FED. ROAD DIST. NO. IL 94/116 FED. AID PROJECT			CONTRACT NO. 68848	

STATE OF ILLINOIS
DEPARTMENT OF TRANSPORTATION

GENERAL NOTES

All structural steel shall conform to AASHTO Classification M-270 Gr. 36, unless otherwise noted.

Plan dimensions and details relative to existing plans are subject to nominal construction variations. The Contractor shall field verify existing dimensions and details affecting new construction and make necessary approved adjustments prior to construction or ordering of materials. Such variations shall not be cause for additional compensation for a change in scope of the work, however, the Contractor will be paid for the quantity actually furnished at the unit price bid for the work.

The contractor is advised that the existing PPC Deck Beams are in a deteriorated condition with reduced load carrying capacity. It is the contractor's responsibility to account for the condition of the beams when developing construction procedures.

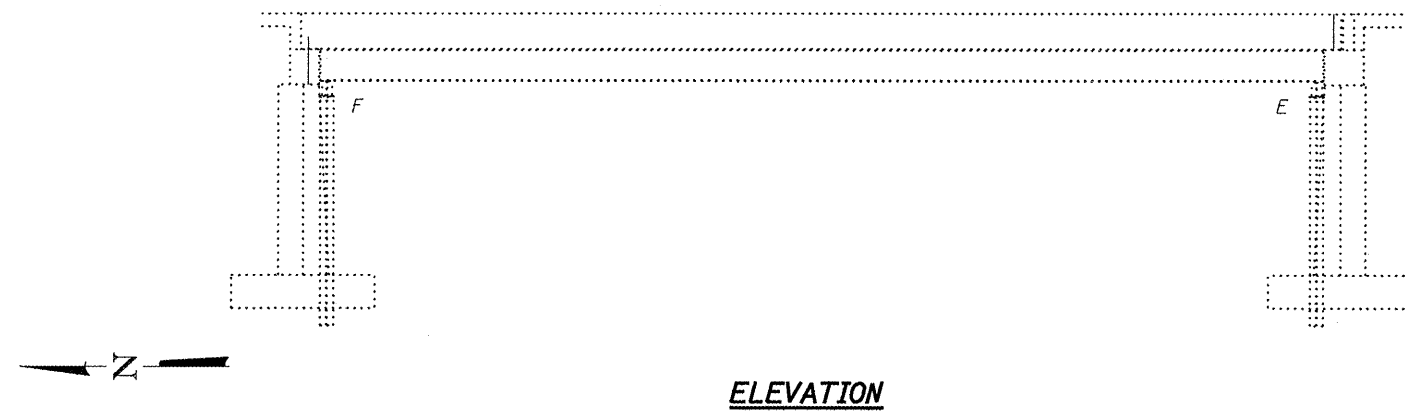
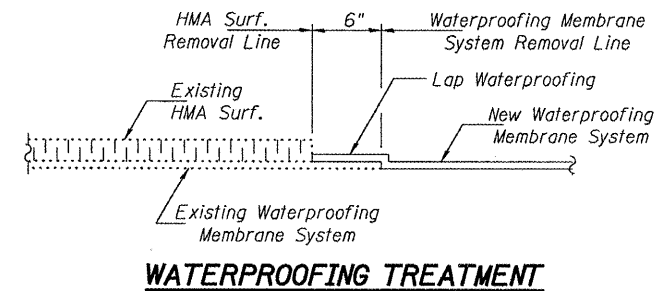
If the contractor's procedure for existing beam removal or placement of new beams involves placement of cranes or other heavy equipment on the bridge, a detailed procedure shall be submitted to the Engineer for approval. The procedure shall include calculations, prepared and sealed by an Illinois Licensed Structural Engineer, verifying that the equipment and procedure used will not overstress the new or existing beams. To distribute load to multiple beams and protect the existing surface, in all cases a double layer mat of heavy timbers shall be used at all times under crane tracks or wheels and any outriggers in the down position. If necessary, shims shall be used under the crane mat to ensure uniform contact with the underlying beams. If heavy equipment will be placed on new PPC deck beams, the following shall be done prior to placement of the timber mats: placement and tightening of transverse tie assemblies, grouting and curing the dowel rods 24 hours minimum and grouting and curing the shear keys.

Any damage done to the bridge during beam removal shall be repaired by the Contractor. Cost to be included in the cost of Removal of Existing PPC Deck Beams.

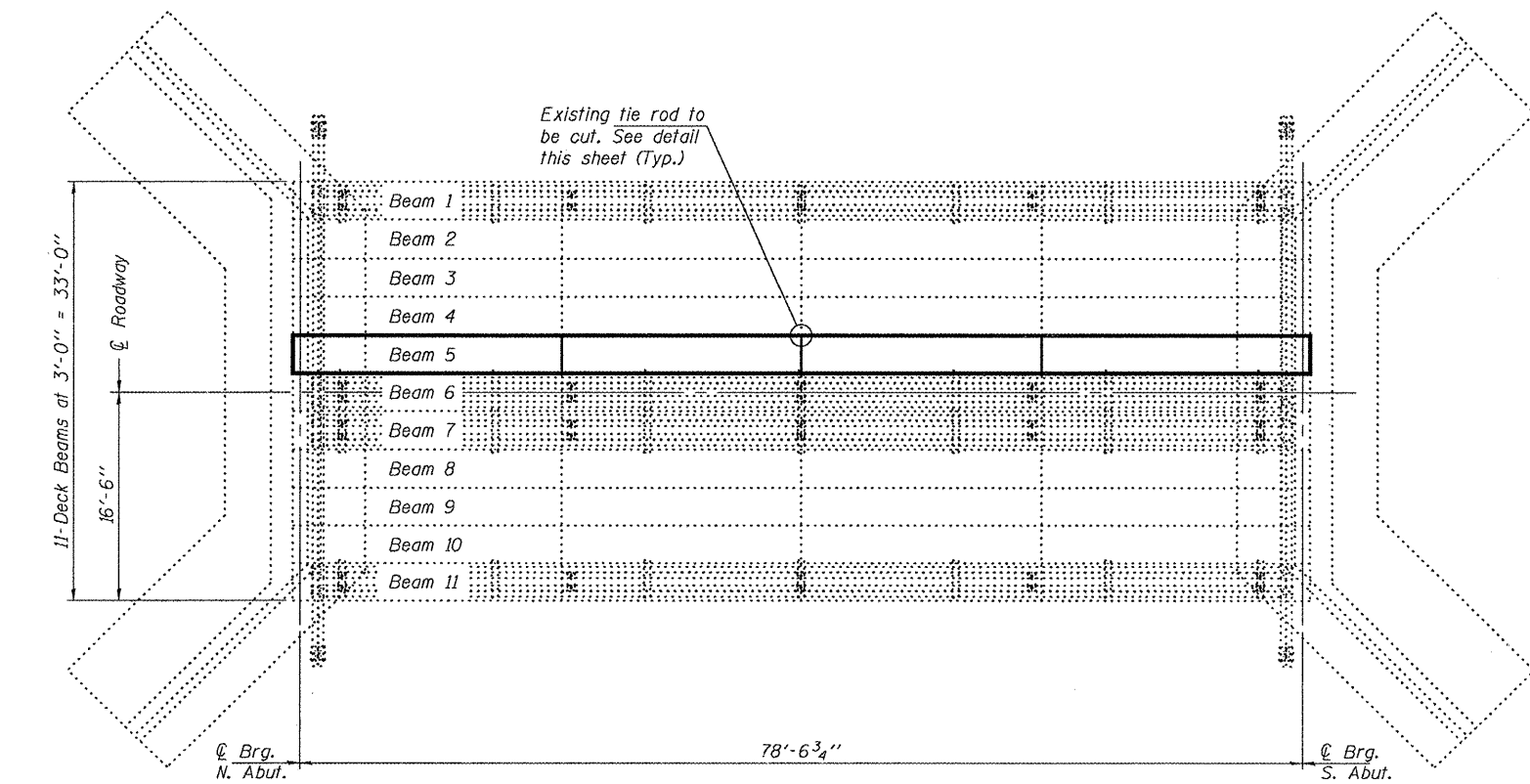
The top surface of the beams shall be finished according to the IDOT Manual for Fabrication of Precast Prestressed Concrete Products.

Temporary concrete barrier shall only be anchored into the overlay and not into the PPC Deck Beams.

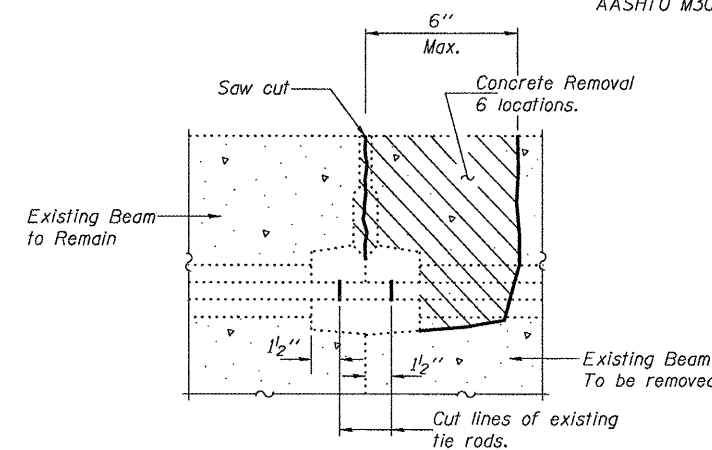
All structural steel shall be shop painted with the inorganic zinc rich primer per AASHTO M300, Type 1. Cost included with PPC Deck Beams.



ELEVATION



PLAN



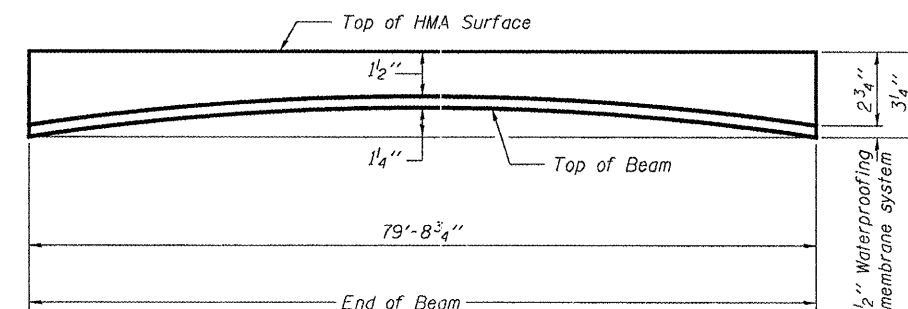
BEAM REMOVAL DETAIL AT TRANSVERSE TIES

DESIGN STRESSES

PRECAST PRESTRESSED UNITS
 $f'_c = 6,000$ psi
 $f'_{ci} = 5,000$ psi
 $f'_s = 270,000$ psi ($\frac{1}{2}$ " ϕ low lax strands)
 $f'_{si} = 201,960$ psi ($\frac{1}{2}$ " ϕ low lax strands)

TOTAL BILL OF MATERIAL

ITEM	UNIT	QUANTITY
Removal of Existing PPC Deck Beams	Sq. Ft.	239
Precast Prestressed Concrete Deck Beams (33" Depth)	Sq. Ft.	233
Hot-Mix Asphalt Surface Removal	Sq. Yd.	9.1
HMA Surface Course Mix "D" N50	Tons	4.3
PC Mortar Fairing Course	Foot	160
Waterproofing Membrane System	Sq. Yd.	35.7
Asbestos Bearing Pad Removal	Each	1

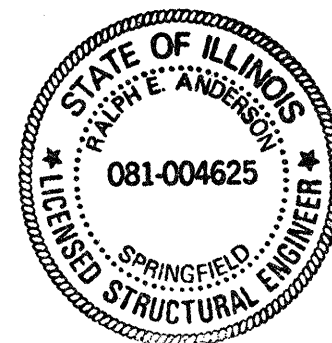


ANTICIPATED INITIAL CAMBER DIAGRAM

**PLAN & ELEVATION
IL ROUTES 94 & 116
OVER ELLISON CREEK
SN 036-0004**

DESIGNED: *Albin Holloway*
 CHECKED: *John Foy*
 DRAWN: Kyle M. Steffen
 CHECKED: ATH AAB

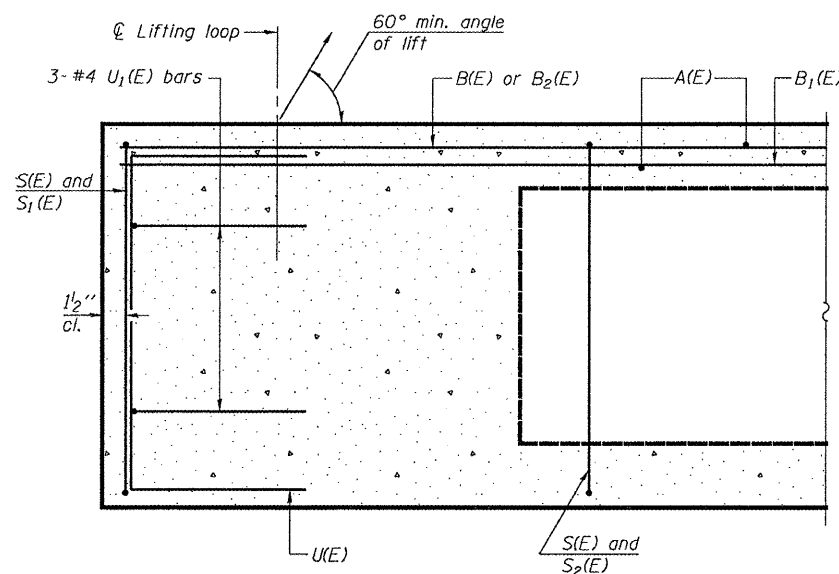
OCTOBER 30, 2008
 EXAMINED: *Dr. Carl Brown*
 PASSED: *Ralph E. Anderson*
ENGINEER OF STRUCTURAL SERVICES
 ENGINEER OF BRIDGES AND STRUCTURES



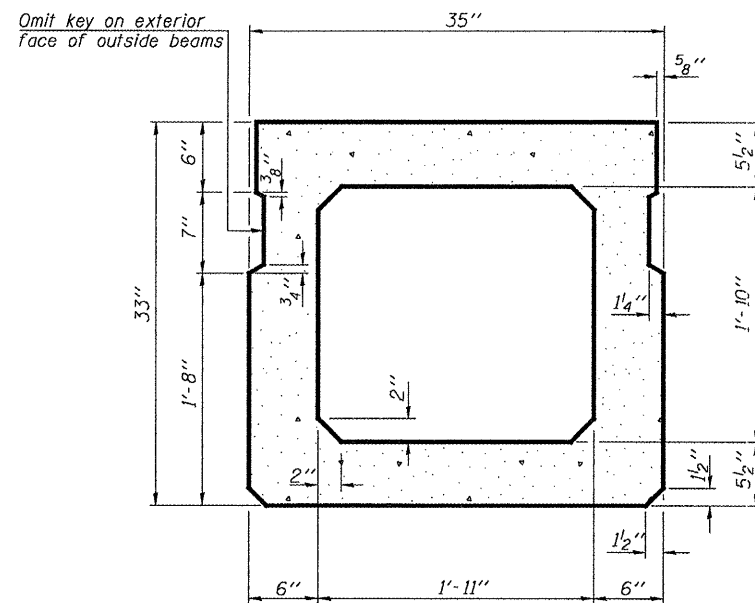
Expires: November 30, 2010

SHEET NO. 1	F.A.P. RTE.	SECTION	COUNTY	TOTAL SHEETS	SHEET NO.
3 SHEETS	534	(109BR)I	HENDERSON	11	9
FED. ROAD DIST. NO.			ILLINOIS FED. AID PROJECT		
			CONTRACT NO. 68848		

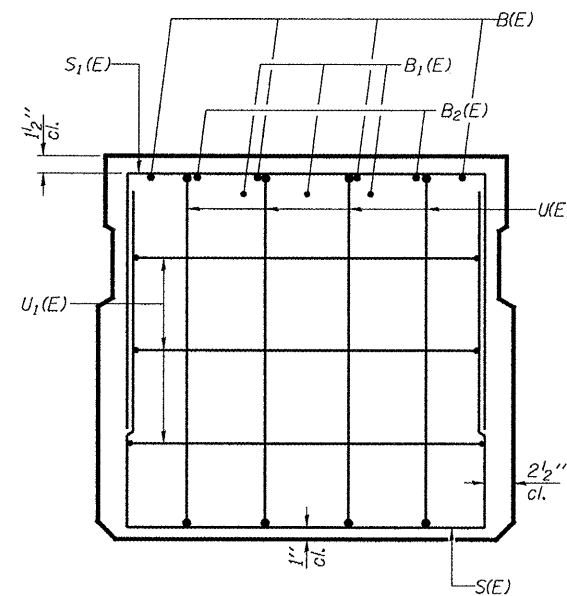
STATE OF ILLINOIS
DEPARTMENT OF TRANSPORTATION



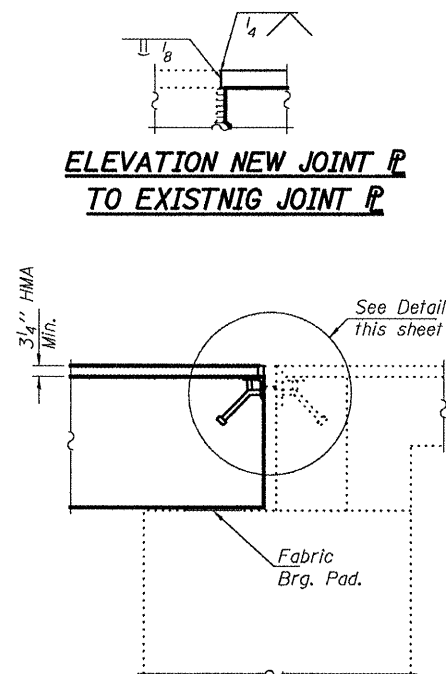
SECTION C-C



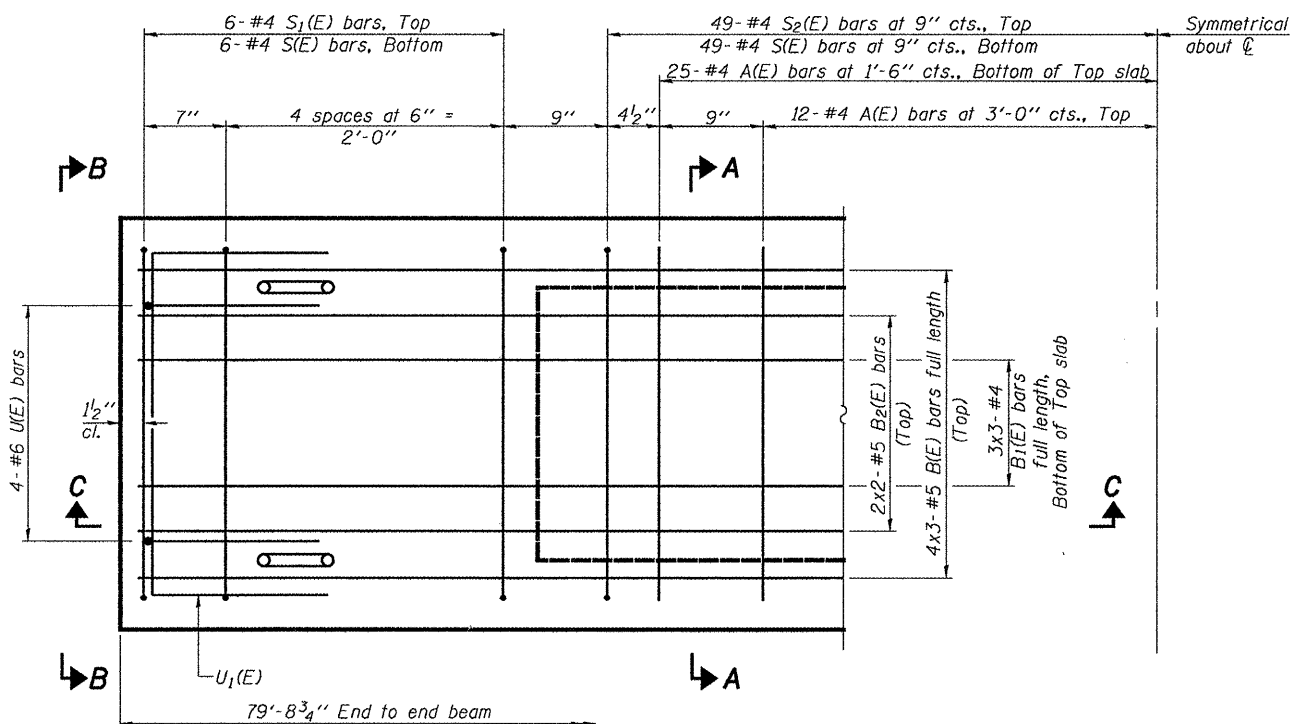
SECTION A-A
(Showing dimensions)



VIEW B-B

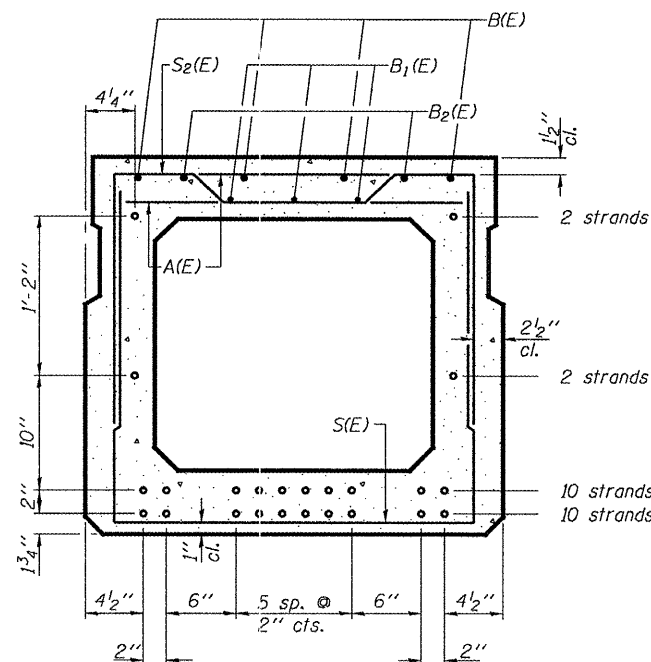


SECTION THRU
SOUTH ABUTMENT



PLAN VIEW

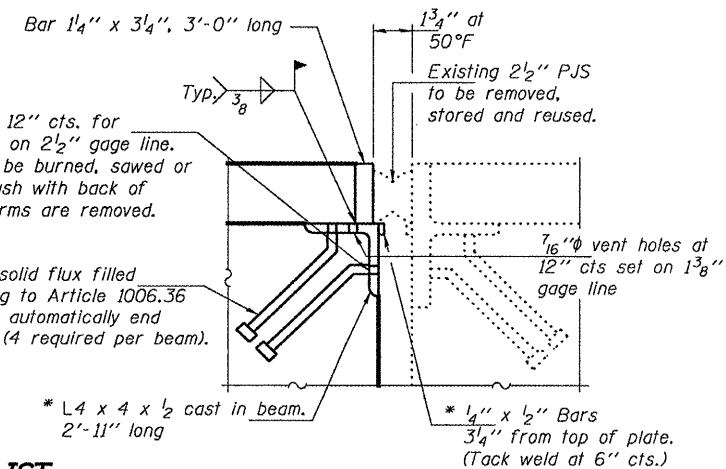
Note: Spacing of S(E) and S2(E) bars may be adjusted up to 4" in the immediate area of the transverse tie diaphragms to miss the block outs for the transverse ties.



SECTION A-A

(Showing reinforcement and permissible strand locations)

Note: Place the number of strands specified in each row symmetrically about the centerline of beam in the permissible strand locations shown.



DETAIL A

(Cost included with PPC Deck Beams)

* Need not be galvanized.

MIN. BAR LAPS

#4 Bar = 1'-8"
#5 Bar = 2'-2"

* 3/4"φ x 8" granular or solid flux filled headed studs conforming to Article 1006.36 of the Standard Spec's automatically end welded at 12" alt. cts. (4 required per beam). Cast in beam.

* L4 x 4 x 1/2 cast in beam. 2'-11" long

BAR LIST
ONE BEAM ONLY
(For information only)

Bar	No.	Size	Length	Shape
A(E)	74	#4	2'-7"	—
B(E)	12	#5	28'-0"	—
B1(E)	9	#4	27'-8"	—
B2(E)	4	#5	16'-0"	—
S(E)	110	#4	7'-4"	U
S1(E)	12	#4	6'-2"	U
S2(E)	98	#4	6'-5"	U
U(E)	8	#6	5'-0"	C
U1(E)	6	#4	4'-11"	C

Bars indicated thus 4 x 3-#5 etc. indicates 4 lines of bars with 3 lengths per line.

Note: See sheet 3 of 3 for additional details and Bill of Material.

BEAM DETAILS
IL ROUTES 94 & 116
OVER ELLISON CREEK
SN 036-0004

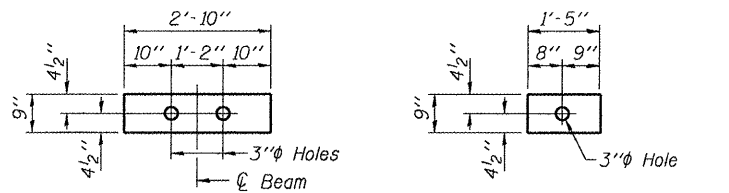
DESIGNED	ATH
CHECKED	AJB
DRAWN	Kyle M. Steffen
CHECKED	ATH AJB

OCTOBER 30, 2008
EXAMINED *Carl Proyer*
ENGINEER OF STRUCTURAL SERVICES
PASSED *Ralph E. Anderson*
ENGINEER OF BRIDGES AND STRUCTURES

PD-3336-0 5-16-08

SHEET NO. 2 3 SHEETS	F.A.P. RTE. 534	SECTION (109BR)I	COUNTY HENDERSON	TOTAL SHEETS 11	SHEET NO. 10
	CONTRACT NO. 68848		FED. ROAD DIST. NO. ILLINOIS FED. AID PROJECT		

STATE OF ILLINOIS
DEPARTMENT OF TRANSPORTATION

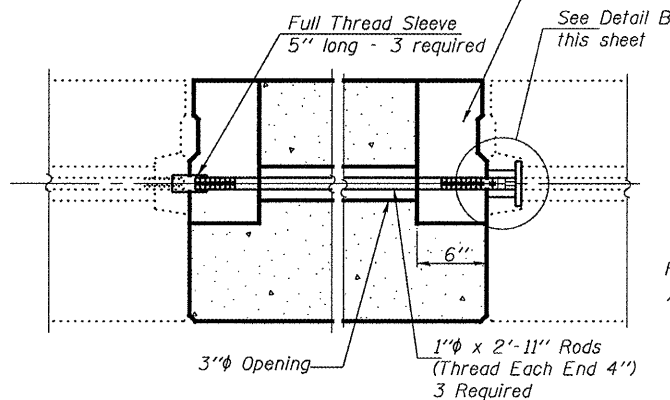


FABRIC BEARING PAD FABRIC ADJUSTING SHIM

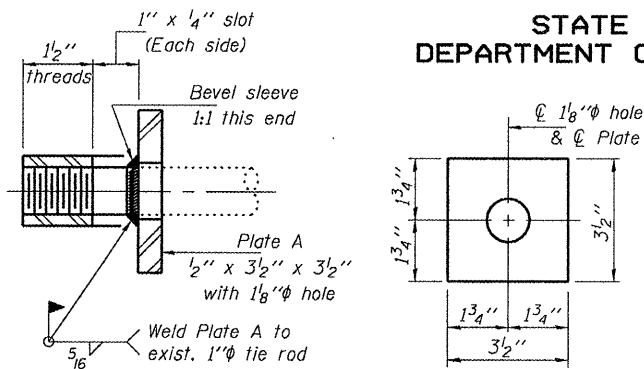
FIXED

Note: Omit holes when using expansion bearings.

6" x 6" x 16 1/2" Blockout to be filled with non-shrink grout as specified in the special provision Concrete Deck Beams (Min. compressive strength at 7 days = 6000 psi) after Beams have been installed. Cost shall be included in the cost of "Precast Prestressed Concrete Deck Beams (33" depth)".



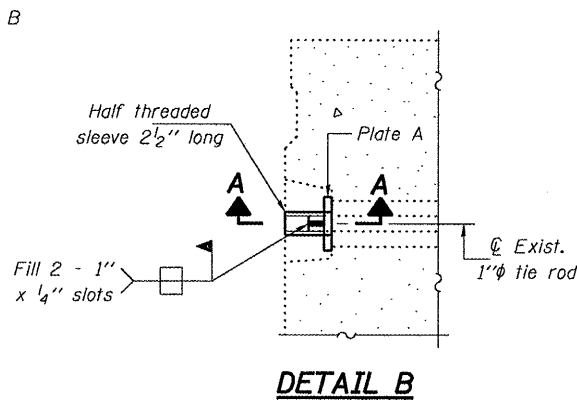
TYPICAL TRANSVERSE TIE ASSEMBLY



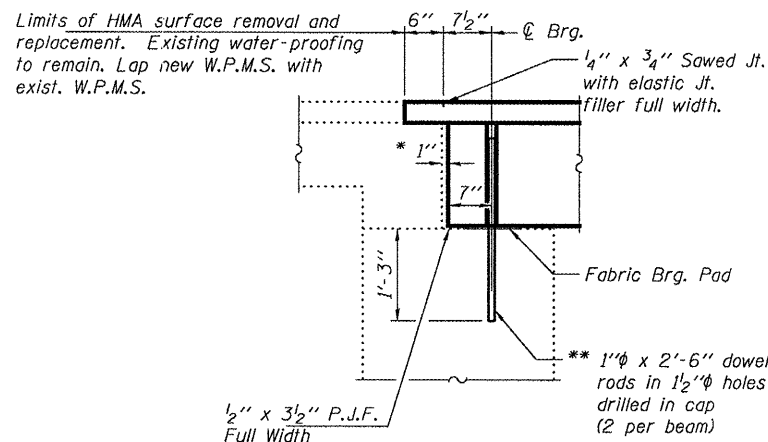
SECTION A-A
(3 Required)

PLATE A
(3 Required)

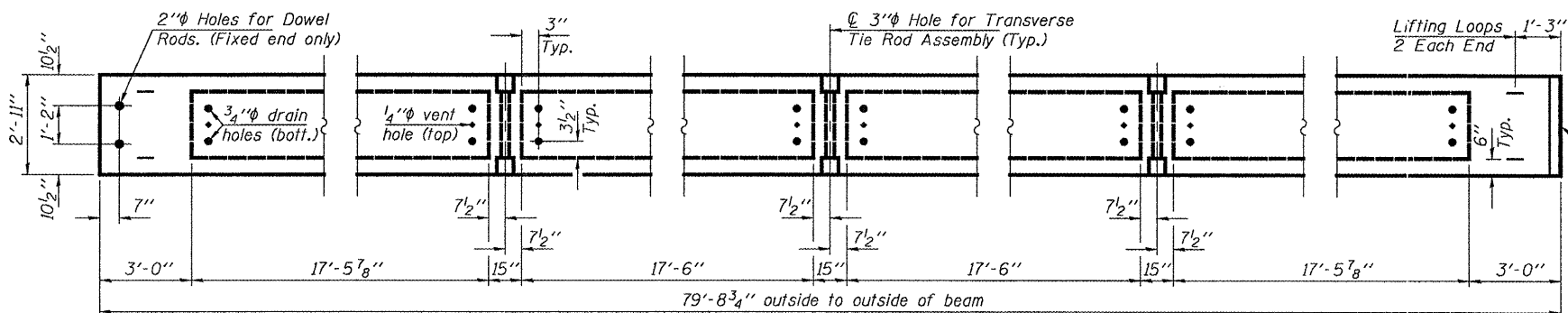
- * 1" Joint shall be filled with non-shrink grout. Dimension may vary to accommodate tolerance in beam lengths.
- ** Existing dowel rods are to be burned off, ground flush, and sealed with epoxy prior to placement of new beams. Cost included in Removal of Existing PPC Deck Beams. After beams have been erected holes shall be drilled into cap and dowel rods placed. Dowel holes shall be filled with non-shrink grout to top of beam and allowed to cure a minimum of 24 hours prior to grouting the shear keys.



DETAIL B



SECTION THRU NORTH ABUTMENT

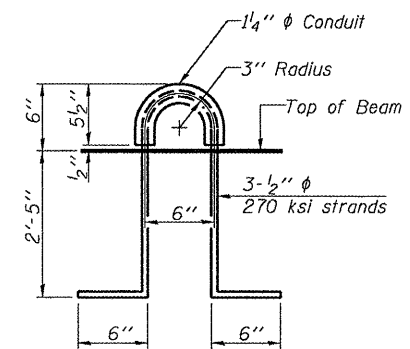
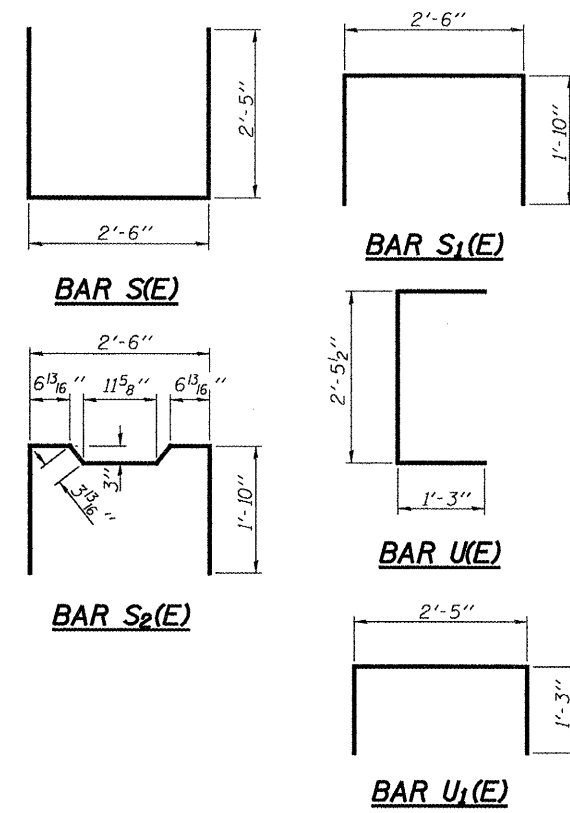


BEAM PLAN

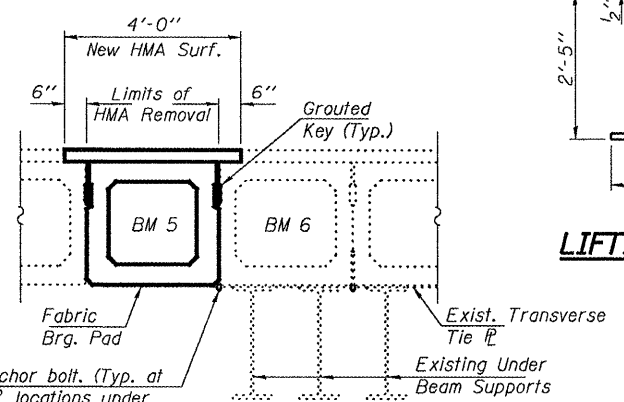
Expansion End (See Details sheet 2 of 3)

NOTES

- Prestressing steel shall be uncoated high strength, low relaxation 7-wire strand, Grade 270. The nominal diameter shall be 1/2" and the nominal cross-sectional area shall be 0.153 sq. in. The 1" rods in the transverse tie assembly shall be tightened to a snug fit and the threads set. Pockets on exterior faces of bridge shall be filled with grout after transverse tie assembly is in place.
- Reinforcement bars shall conform to ASTM A 706, Grade 60. (See Special Provisions). Two 1/8" fabric adjusting shims of the dimensions shown shall be provided for each bearing pad location. A minimum 2 1/2" lifting pin shall be used to engage the lifting loops during handling.
- Corrosion Inhibitor, per Article 1020.05(b)(12) and 1021.06 of the Standard Specifications, shall be used in the concrete for precast prestressed concrete deck beams.
- Compressive strength of prestressed concrete, f'c, shall be 6000 psi.
- Compressive strength of prestressed concrete at release, f'ci, shall be 5000 psi.



LIFTING LOOP DETAIL



PARTIAL CROSS SECTION
Looking South

Remove existing anchor bolt. (Typ. at all transverse tie locations under Beam 5). Bolts to be reinstalled after Beam 5 is replaced. Cost included with Removal of Existing PPC Deck Beams.

BILL OF MATERIAL

Precast Prestressed Conc. Deck Bms. (33" depth)	Sq. Ft.	233
---	---------	-----

BEAM DETAILS
IL ROUTES 94 & 116
OVER ELLISON CREEK
SN 036-0004

DESIGNED	ATH
CHECKED	AJB
DRAWN	Kyle M. Steffen
CHECKED	ATH AJB

OCTOBER 30, 2008
EXAMINED *Carl Perry*
ENGINEER OF STRUCTURAL SERVICES
PASSED *Ralph E. Anderson*
ENGINEER OF BRIDGES AND STRUCTURES

SHEET NO. 3 3 SHEETS	F.A.P. RTE. 534	SECTION (109BR)I	COUNTY HENDERSON	TOTAL SHEETS 11	SHEET NO. 11
	CONTRACT NO. 68848			ILLINOIS FED. AID PROJECT	