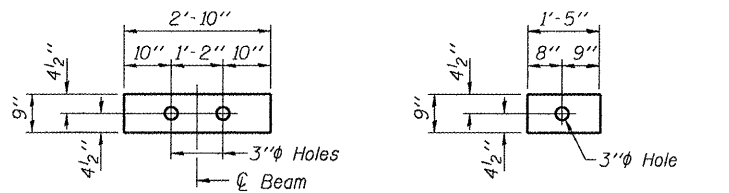


STATE OF ILLINOIS
DEPARTMENT OF TRANSPORTATION

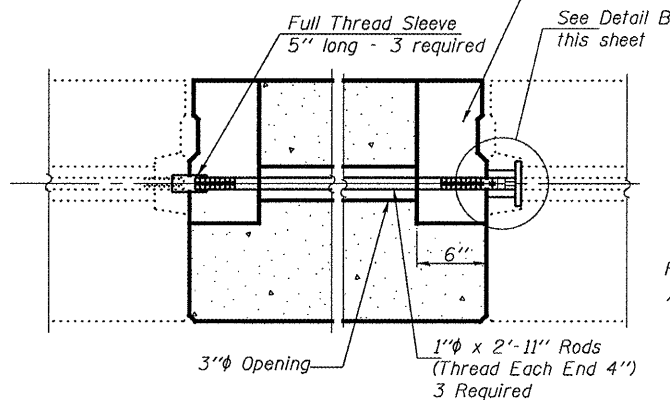


FABRIC BEARING PAD FABRIC ADJUSTING SHIM

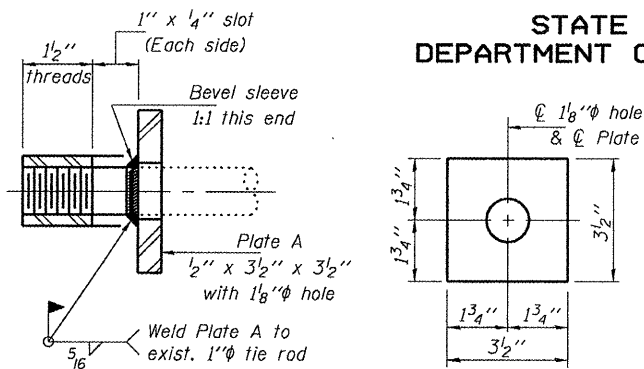
FIXED

Note: Omit holes when using expansion bearings.

6" x 6" x 16 1/2" Blockout to be filled with non-shrink grout as specified in the special provision Concrete Deck Beams (Min. compressive strength at 7 days = 6000 psi) after Beams have been installed. Cost shall be included in the cost of "Precast Prestressed Concrete Deck Beams (33" depth)".



TYPICAL TRANSVERSE TIE ASSEMBLY



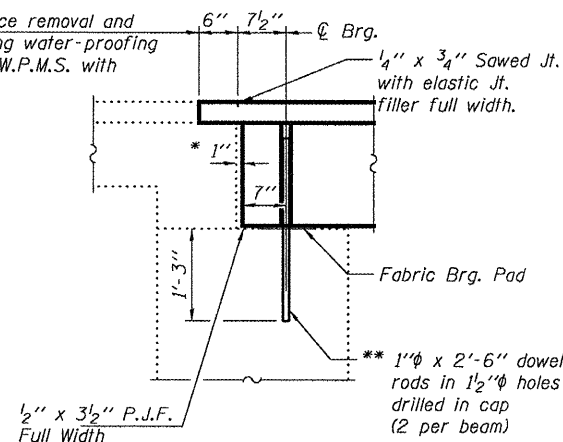
SECTION A-A
(3 Required)

PLATE A
(3 Required)

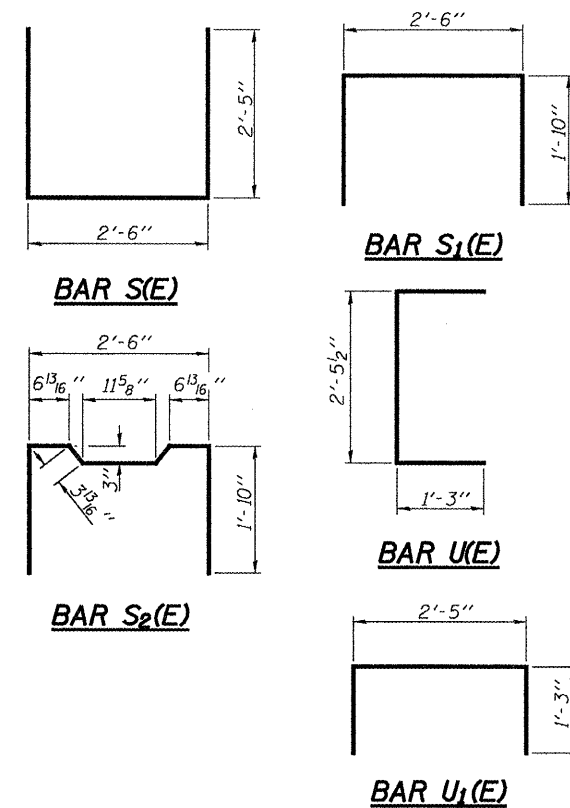
* 1" Joint shall be filled with non-shrink grout. Dimension may vary to accommodate tolerance in beam lengths.

** Existing dowel rods are to be burned off, ground flush, and sealed with epoxy prior to placement of new beams. Cost included in Removal of Existing PPC Deck Beams. After beams have been erected holes shall be drilled into cap and dowel rods placed. Dowel holes shall be filled with non-shrink grout to top of beam and allowed to cure a minimum of 24 hours prior to grouting the shear keys.

Limits of HMA surface removal and replacement. Existing water-proofing to remain. Lap new W.P.M.S. with exist. W.P.M.S.



SECTION THRU NORTH ABUTMENT

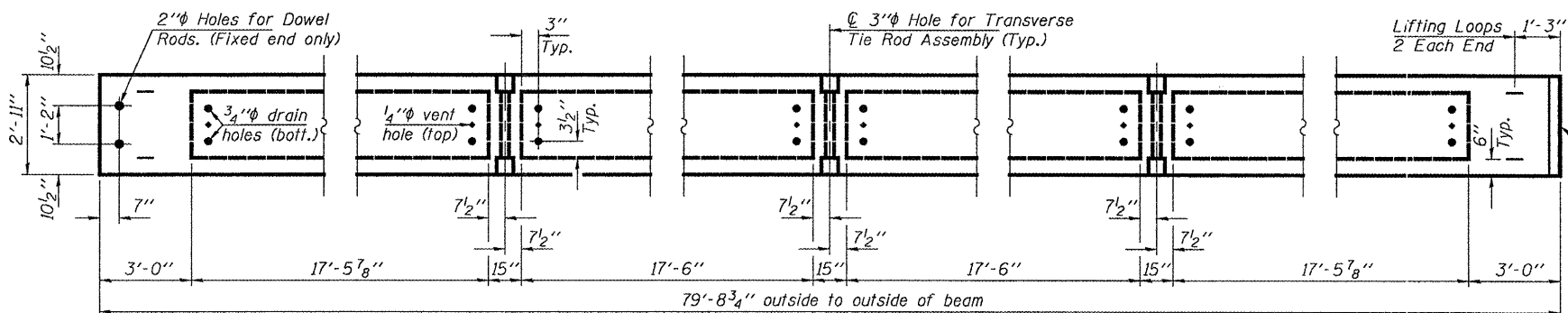


BAR S1(E)

BAR S2(E)

BAR U1(E)

BAR U2(E)

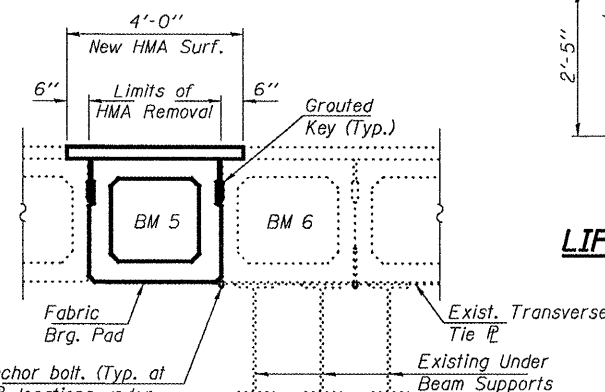


BEAM PLAN

Expansion End (See Details sheet 2 of 3)

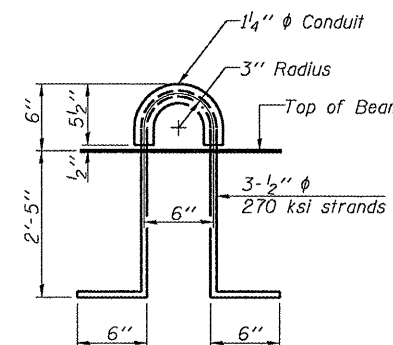
NOTES

Prestressing steel shall be uncoated high strength, low relaxation 7-wire strand, Grade 270. The nominal diameter shall be 1/2" and the nominal cross-sectional area shall be 0.153 sq. in. The 1" rods in the transverse tie assembly shall be tightened to a snug fit and the threads set. Pockets on exterior faces of bridge shall be filled with grout after transverse tie assembly is in place. Reinforcement bars shall conform to ASTM A 706, Grade 60. (See Special Provisions). Two 1/8" fabric adjusting shims of the dimensions shown shall be provided for each bearing pad location. A minimum 2 1/2" lifting pin shall be used to engage the lifting loops during handling. Corrosion Inhibitor, per Article 1020.05(b)(12) and 1021.06 of the Standard Specifications, shall be used in the concrete for precast prestressed concrete deck beams. Compressive strength of prestressed concrete, f'c, shall be 6000 psi. Compressive strength of prestressed concrete at release, f'ci, shall be 5000 psi.



PARTIAL CROSS SECTION
Looking South

Remove existing anchor bolt. (Typ. at all transverse tie rod locations under Beam 5). Bolts to be reinstalled after Beam 5 is replaced. Cost included with Removal of Existing PPC Deck Beams.



LIFTING LOOP DETAIL

BILL OF MATERIAL

Precast Prestressed Conc. Deck Bms. (33" depth)	Sq. Ft.	233
---	---------	-----

BEAM DETAILS
IL ROUTES 94 & 116
OVER ELLISON CREEK
SN 036-0004

DESIGNED	ATH
CHECKED	AJB
DRAWN	Kyle M. Steffen
CHECKED	ATH AJB

OCTOBER 30, 2008
EXAMINED *Carl Perry*
ENGINEER OF STRUCTURAL SERVICES
PASSED *Ralph E. Anderson*
ENGINEER OF BRIDGES AND STRUCTURES

SHEET NO. 3 3 SHEETS	F.A.P. RTE. 534	SECTION (109BR)I	COUNTY HENDERSON	TOTAL SHEETS 11	SHEET NO. 11
	CONTRACT NO. 68848				
FED. ROAD DIST. NO.		ILLINOIS FED. AID PROJECT			