

NORTHWEST CORNER 350' RADIUS			
POINT #	STATION	OFFSET	ELEVATION
A1	235+80	51.20 LT	501.6
A2	235+90	52.88 LT	501.85
A3	236+00	54.81 LT	501.7
A4	236+10	56.96 LT	501.75
A5	236+20	59.36 LT	501.78
A6	236+30	62.00 LT	501.81
A7	236+40	64.88 LT	501.84
A8	236+50	68.02 LT	501.88
A9	236+58.92	71.02 LT	501.91

NORTHWEST CORNER 75' RADIUS			
POINT #	LOCATION*	CHORD OFFSET	ELEVATION
B1	0	0	501.91
B2	7.4	6.35	501.91
B3	14.8	10.22	501.89
B4	22.2	12.36	501.91
B5	29.6	13.05	501.79
B6	37	12.36	501.71
B7	44.3	10.22	501.61
B8	51.7	6.35	501.48
B9	59.1	0	501.35

SPUR STA 50+52.2 OFF 51.54' LT

LONG CHORD C=59.1'

MID ORDINATE M=13.05'

* DISTANCE ALONG CHORD

SPUR STA 51+00.5 OFF 33.85' LT

SOUTHWEST CORNER 150' RADIUS (116)			
POINT #	STATION	OFFSET	ELEVATION
C1	235+09.7	31.71 RT	502.8
C2	235+19.1	32.30 RT	502.83
C3	235+28.6	33.58 RT	502.86
C4	235+38.2	35.55 RT	502.89
C5	235+47.7	38.24 RT	502.92

SOUTHWEST CORNER 40' RADIUS			
POINT #	LOCATION*	CHORD OFFSET	ELEVATION
D1	0	0	502.92
D2	6.4	2.02	503
D3	12.9	3.44	503.09
D4	19.3	4.27	503.21
D5	25.7	4.55	503.58
D6	32.1	4.27	503.95
D7	38.6	3.44	504.35
D8	45	2.02	504.77
D9	51.4	0	505.19

IL 116 STA 235+47.7 OFF 38.24' RT

LONG CHORD C=51.4'

MID ORDINATE M=4.55'

* DISTANCE ALONG CHORD

AIR. RD. STA 48+57.7 OFF 38.92' LT

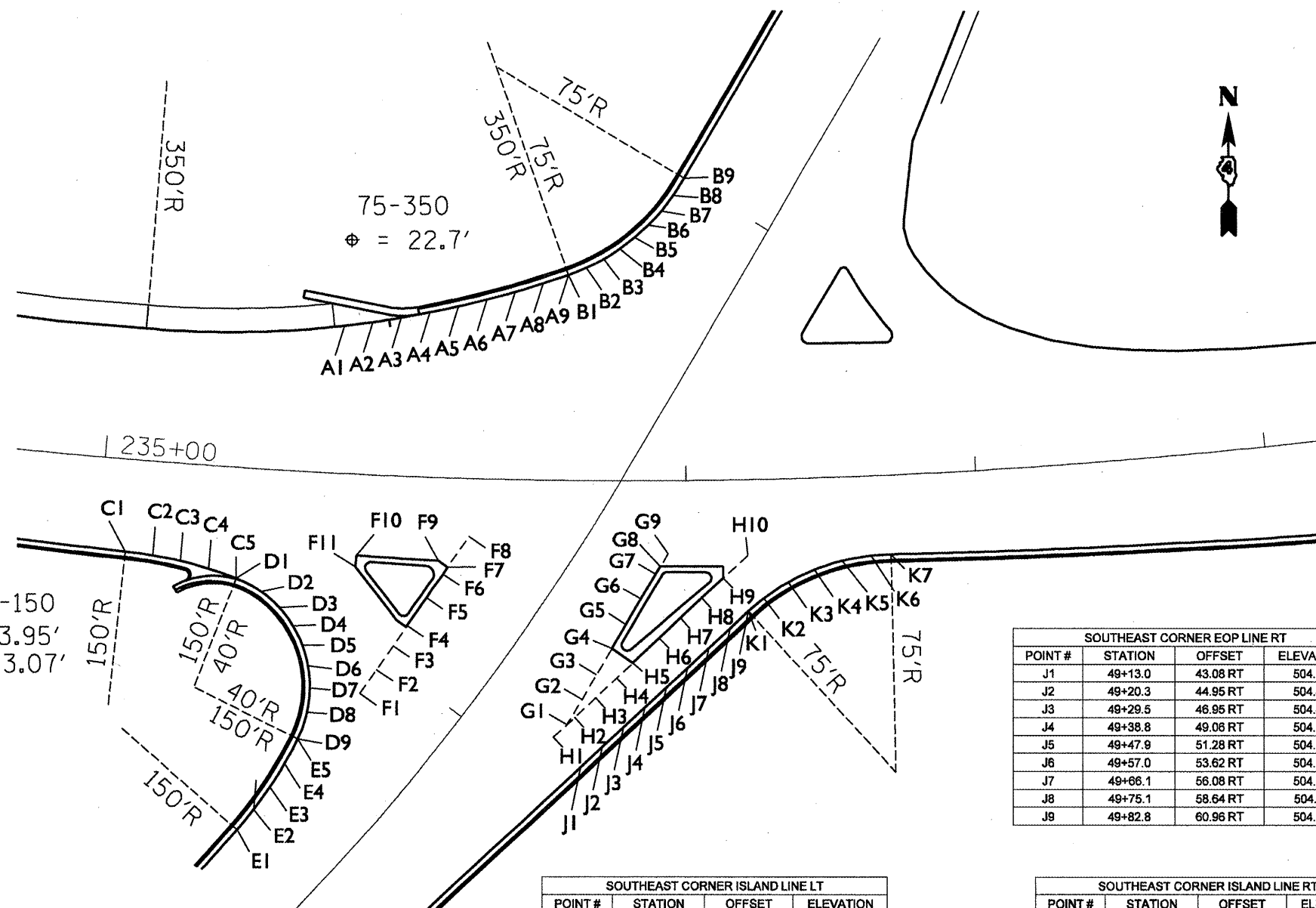
SOUTHWEST CORNER 150' RADIUS (AIRPORT RD)			
POINT #	STATION	OFFSET	ELEVATION
E1	48+18.5	33.53 LT	505.82
E2	48+28.4	34.17 LT	505.81
E3	48+38.2	35.28 LT	505.49
E4	48+48.0	36.87 LT	505.34
E5	48+57.7	38.92 LT	505.19

SOUTHWEST CORNER ISLAND LINE RT			
POINT #	STATION	OFFSET	ELEVATION
F1	48+83.8	33.32 LT	505
F2	48+94.2	33.81 LT	504.89
F3	49+04.7	34.16 LT	504.78
F4	49+13.6	33.85 LT	504.68
F5	49+25.6	34.00 LT	504.51
F6	49+36.1	34.10 LT	504.36
F7	49+39.9	34.10 LT	504.3
F8	49+49.7	34.00 LT	504.16 (EX)

ISLAND CORNER

ISLAND CORNER

EOP IL 116 (EX)



SOUTHEAST CORNER EOP LINE RT			
POINT #	STATION	OFFSET	ELEVATION
J1	49+13.0	43.08 RT	504.53
J2	49+20.3	44.95 RT	504.48
J3	49+29.5	46.95 RT	504.42
J4	49+38.8	49.06 RT	504.36
J5	49+47.9	51.28 RT	504.32
J6	49+57.0	53.62 RT	504.29
J7	49+66.1	56.08 RT	504.26
J8	49+75.1	58.64 RT	504.21
J9	49+82.8	60.96 RT	504.18

SOUTHEAST CORNER ISLAND LINE LT			
POINT #	STATION	OFFSET	ELEVATION
G1	49+19.5	30.60 RT	504.72
G2	49+29.1	29.70 RT	504.68
G3	49+38.7	28.93 RT	504.63
G4	49+48.7	28.25 RT	504.59
G5	49+58.0	27.75 RT	504.54
G6	49+67.6	27.35 RT	504.50
G7	49+77.3	27.07 RT	504.46
G8	49+80.4	27.00 RT	504.44
G9	49+85.4	28.93 RT	504.42 (EX)

ISLAND CORNER

ISLAND CORNER

EOP IL 116 (EX)

SOUTHEAST CORNER ISLAND LINE RT			
POINT #	STATION	OFFSET	ELEVATION
H1	49+15.0	29.41 RT	504.74
H2	49+22.9	31.27 RT	504.71
H3	49+32.3	33.24 RT	504.67
H4	49+41.7	35.34 RT	504.64
H5	49+48.7	36.98 RT	504.6
H6	49+60.2	39.87 RT	504.57
H7	49+69.5	42.31 RT	504.54
H8	49+78.6	44.87 RT	504.5
H9	49+87.8	47.57 RT	504.46
H10	49+98.5	50.69 RT	504.43 (EX)

ISLAND CORNER

ISLAND CORNER

EOP IL 116 (EX)

SOUTHEAST CORNER 75' RADIUS			
POINT #	LOCATION*	CHORD OFFSET	ELEVATION
K1	0	0	504.18
K2	6.6	2.16	504.15
K3	13.3	3.67	504.17
K4	19.9	4.55	504.19
K5	26.5	4.85	504.21
K6	33.2	4.55	504.24
K7	39.8	3.67	504.26
K8	46.4	2.16	504.28
K9	53.1	0	504.30 (EX)

AIR. RD. STA 49+82.8 OFF 60.96' RT

INLET AR STA 49+89 OFF 63.2' RT

LONG CHORD C=53.1'

MID ORDINATE M=4.85'

* DISTANCE ALONG CHORD

IL 116 STA 237+69.5 OFF 37.27' RT

FILE NAME = c:\projects\hermhey\misc.dgn

USER NAME = eversal

PLOT SCALE = 50.0000' / IN.

PLOT DATE = 10/20/2008

DESIGNED -

DRAWN -

CHECKED -

DATE -

REVISED -

REVISED -

REVISED -

REVISED -

STATE OF ILLINOIS
DEPARTMENT OF TRANSPORTATION

Horizontal & Vertical Control

SCALE: SHEET NO. OF SHEETS STA. TO STA.

F.A.U. RTE.	SECTION	COUNTY	TOTAL SHEETS	SHEET NO.
6758	(1-R), (1-VC)BR	PEORIA	172	94

FED. ROAD DIST. NO. ILLINOIS FED. AID PROJECT CONTRACT NO. 68092