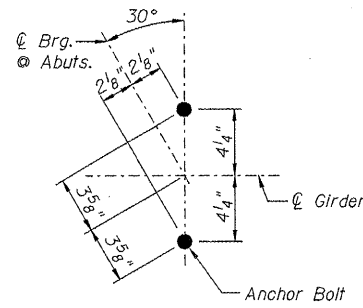
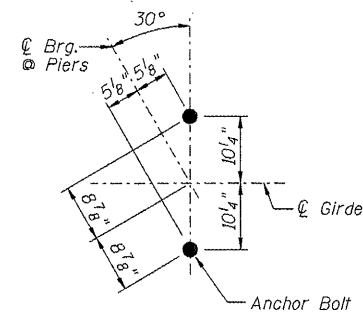


STATE OF ILLINOIS
DEPARTMENT OF TRANSPORTATION



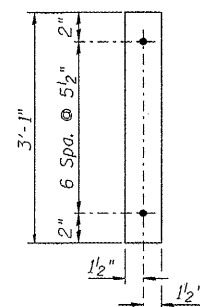
ANCHOR BOLT LAYOUT

(At Abutments) Use $5/8"$ x $9"$ x $17"$ Shim PL at Girder G3 both abutments under $2"$ thick PL

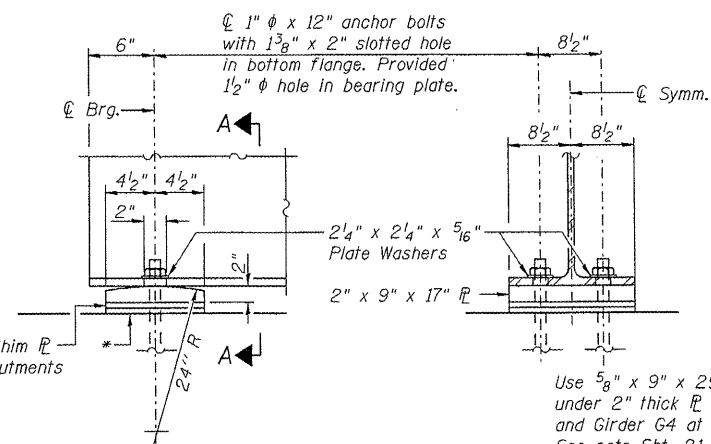


ANCHOR BOLT LAYOUT

(At Piers)



DETAIL A



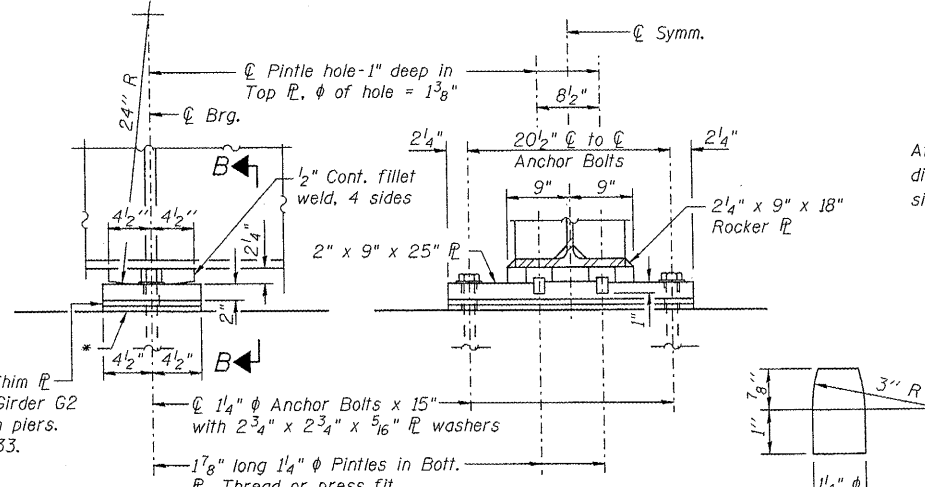
ELEVATION

SECTION A-A

FIXED BEARING AT ABUTMENT

(18 Required)

* $1/8"$ elastomeric neoprene leveling mat according to the material properties of Article 1052.02(a) of the Standard Specifications. Cost included with Structural Steel.



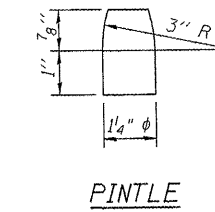
ELEVATION

SECTION B-B

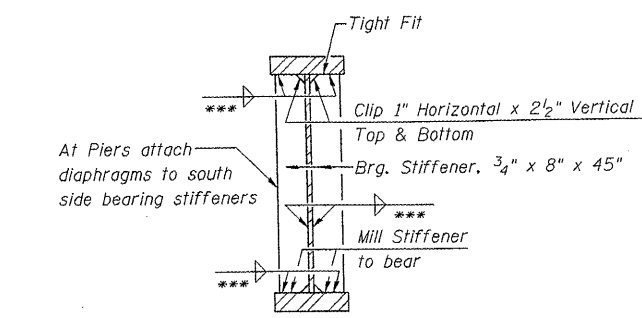
FIXED BEARING AT PIERS

(18 Required)

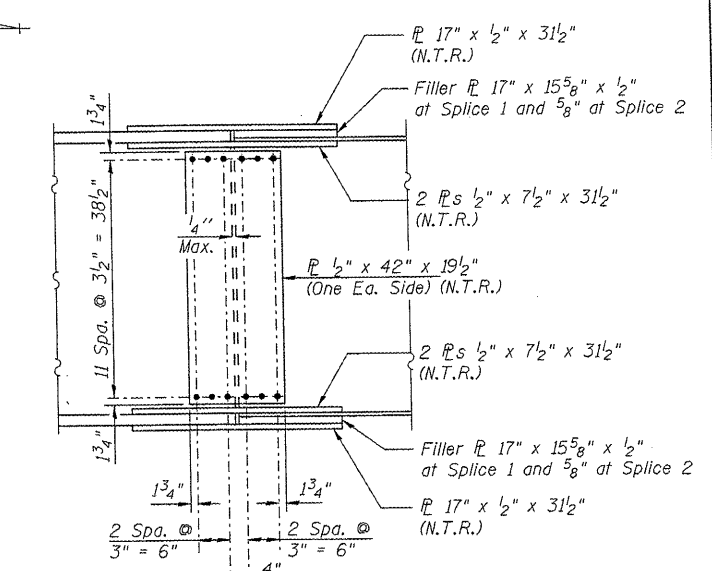
* $1/8"$ elastomeric neoprene leveling mat according to the material properties of Article 1052.02(a) of the Standard Specifications. Cost included with Structural Steel.



PINTLE

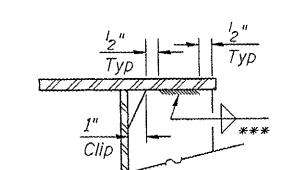


SECTION AT PIERS

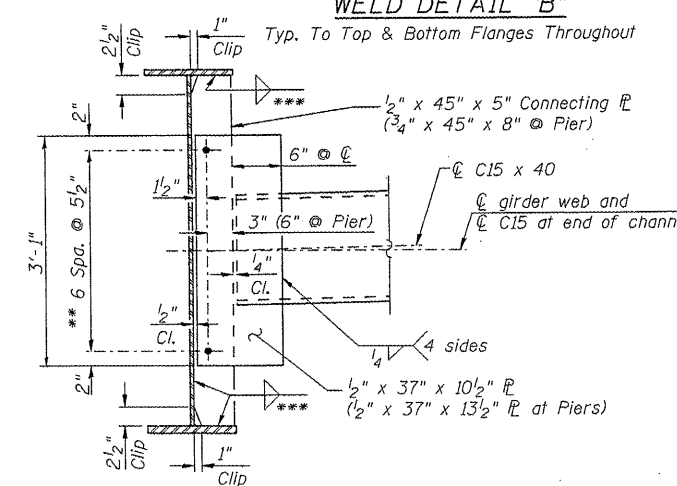


FIELD SPLICE DETAIL

(18 Required)



WELD DETAIL "B"



INTERIOR DIAPHRAGM

(120 Diaphragms Required)

Notes:
1. Two hardened washers required for each set of oversized holes.
** $3/4"$ HS bolts. $1 1/8"$ holes except as noted at Stage Construction Joint, this sheet.

NOTES FOR DIAPHRAGMS AT STAGE CONSTRUCTION JOINT

- To accommodate the deflection during Stage II deck placement, use $1 1/8"$ wide x $1 7/8"$ tall long slot holes in the $1/2"$ x $37"$ x $10 1/2"$ plates at both ends of diaphragm. (Right side of Girder G4 and left side of Girder G5).
- The long slotted holes shall be covered with a $3"$ wide x $37"$ tall x $3/8"$ thick plate washer with $1 1/8"$ holes at $5 1/2"$ vertical centers. See Detail A.
- Bolts in slots shall be finger tight until the second stage pour is complete, and position slots so bolts start at one end with no concrete load and finish near the opposite end under deck load, allowing maximum displacement without laterally stressing main members.
- Use $1 1/8"$ oversized holes with hardened washers in the $1/2"$ x $45"$ x $5"$ connecting plates.

GENERAL NOTES

- Anchor bolts shall be ASTM F1554 all-thread (or an Engineer-approved alternate material) of the grade(s) and diameter(s) specified. ASTM A307 Grade C anchor bolts may be used in lieu of ASTM F1554 Grade 36 ($F_y=36$ ksi). The corresponding specified grade of AASHTO M314 anchor bolts may be used in lieu of ASTM F1554.
- Anchor bolts at fixed bearings may be either cast in place or installed in holes drilled after the supported member is in place.
- Drilled and set anchor bolts shall be installed according to Article 521.06 of the Standard Specifications.
- All cross frames or diaphragms shall be installed as steel is erected and secured with erection pins and bolts except as otherwise noted. Individual cross frames or diaphragms at supports may be temporarily disconnected to install bearing anchor rods.
- Load carrying components designated "NTR" shall conform to the Supplemental Requirements for Notch Toughness, Zone 2.
- $3/4"$ minimum bearing seat step height provide $5/8"$ thick shim plates at G2 and G4 both piers.

*** Minimum fillet weld sizes for Connection Plates and Bearing Stiffeners per AWS Welding Code: $1/4"$ fillet weld for base metal less than or equal to $3/4"$ thick and $5/16"$ fillet weld for base metal greater than $3/4"$ thick. See also Weld Detail "B" this sheet.

DESIGNED P.J.L.
CHECKED LLV
DRAWN MGM
CHECKED P.J.L.

GIRDER DETAILS
AIRPORT ROAD OVER U.P.R.R.
AND KICKAPOO CREEK TRIBUTARY
STATION 45+42.00

STS AECOM	SHEET NO. 16 OF 33 SHEETS	F.A.U. RTE.	SECTION	COUNTY	TOTAL SHEETS	SHEET NO.
		6578	(1-R)RS(1-VC)BR	PEORIA	142	76
		STRUCTURE NO. 072-0201		CONTRACT NO. 68092		
		FED. ROAD DIST. NO. ILLINOIS FED. AID PROJECT				