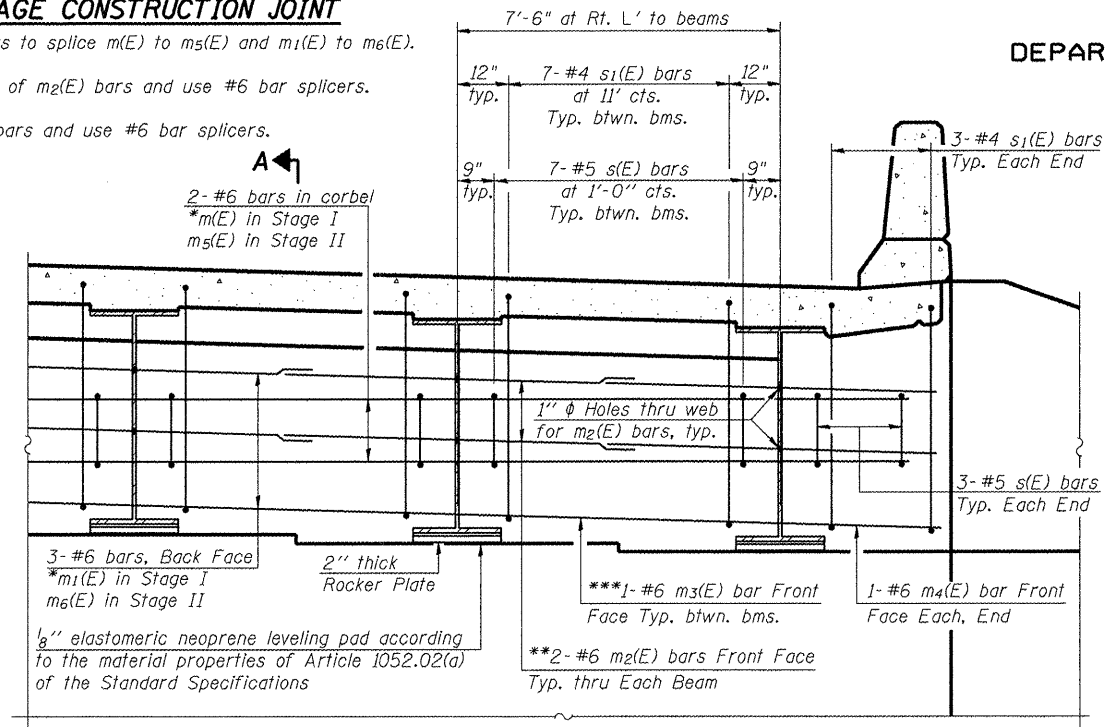
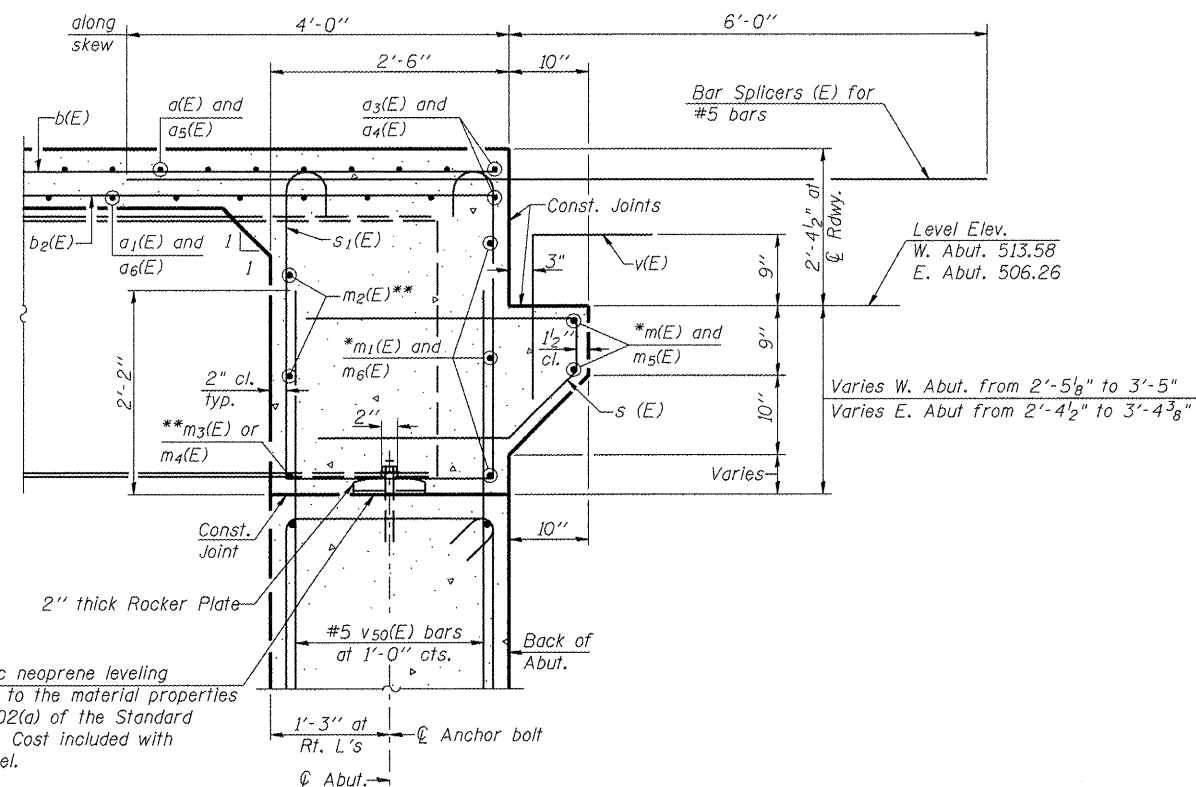


NOTE AT STAGE CONSTRUCTION JOINT

- * Use #6 bar splicers to splice m(E) to m₅(E) and m₁(E) to m₆(E).
- ** Increase bar laps of m₂(E) bars and use #6 bar splicers.
- *** Field cut m₃(E) bars and use #6 bar splicers.



DIAPHRAGM ELEVATION AT ABUTMENT



SECTION A-A

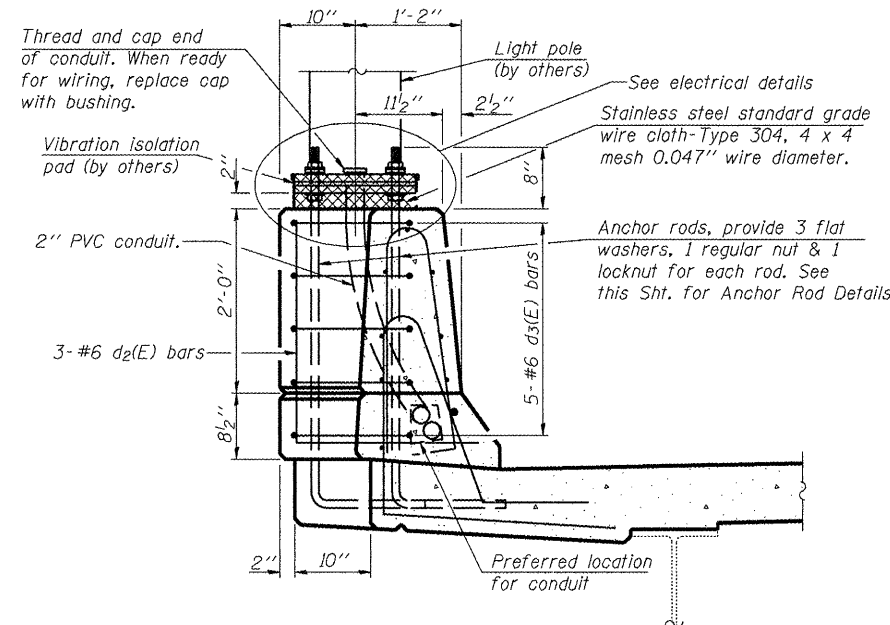
Dimensions at right angles to abutment, except as shown.

MINIMUM BAR LAP

(Diaphragm)
#6 bar = 2'-7"

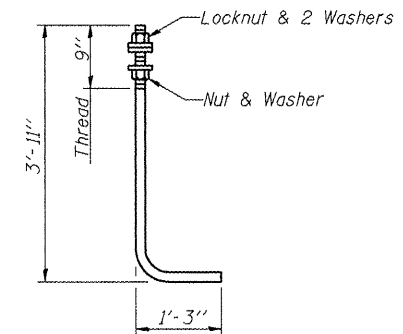
DESIGNED	PJL
CHECKED	LLV
DRAWN	MGM
CHECKED	PJL

**STATE OF ILLINOIS
DEPARTMENT OF TRANSPORTATION**



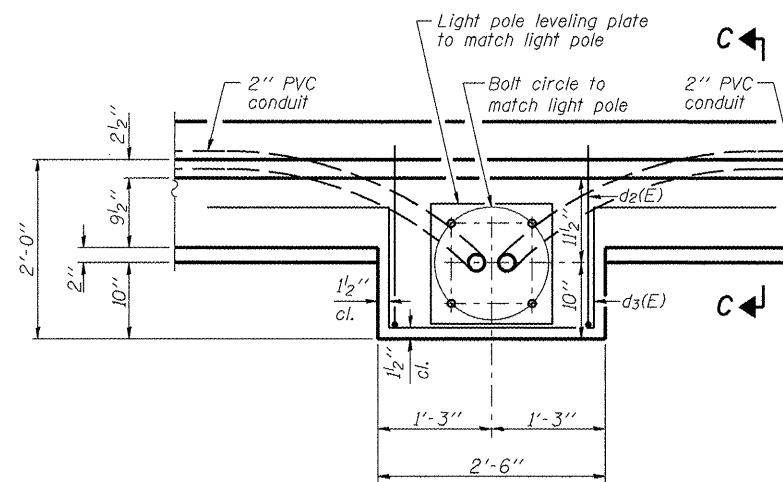
SECTION C-C

Note: Cost of Anchor Rods, Leveling Plate, and Conduit is included with Concrete Superstructures.



ANCHOR ROD

1" Diameter (or as otherwise specified for light poles).
Coordinate with Lighting Plans. (ASTM F 1554 Grade 105)



LIGHT POLE FOUNDATION PLAN

(3 Required)

NOTES

1. Reinforcement bars in diaphragm are billed with superstructure on Sht. 12 of 33.
2. Concrete in diaphragm is included with Concrete Superstructure on Sht. 12 of 33.
3. For details of bars s(E) & s₁(E) see Sht. 12 of 33.
4. The s(E) and s₁(E) bars shall be placed parallel to the beams. Spacing for these bars shall be at right angles to the beams.
5. See Abutment Details, Sht. 17 and 18 of 33 for vs0(E) bars.

**DIAPHRAGM AND LIGHT
POLE FOUNDATION DETAILS
AIRPORT ROAD OVER U.P.R.R.
AND KICKAPOO CREEK TRIBUTARY
STATION 45+42.00**

STS AECOM 111 NE Jefferson Avenue Peoria, IL 61602 T 309.676.8464 Fax 309.676.5445 IL Design Firm Reg. No. 184-001518 www.stsconsultants.com	SHEET NO. 13	F.A.U. RTE.	SECTION	COUNTY	TOTAL SHEETS	SHEET NO.
	OF	6578	(1-R)RS(1-VC)BR	PEORIA	142	73
	33 SHEETS	STRUCTURE NO. 072-0201		CONTRACT NO. 68092		
		FED. ROAD DIST. NO. ILLINOIS FED. AID PROJECT				