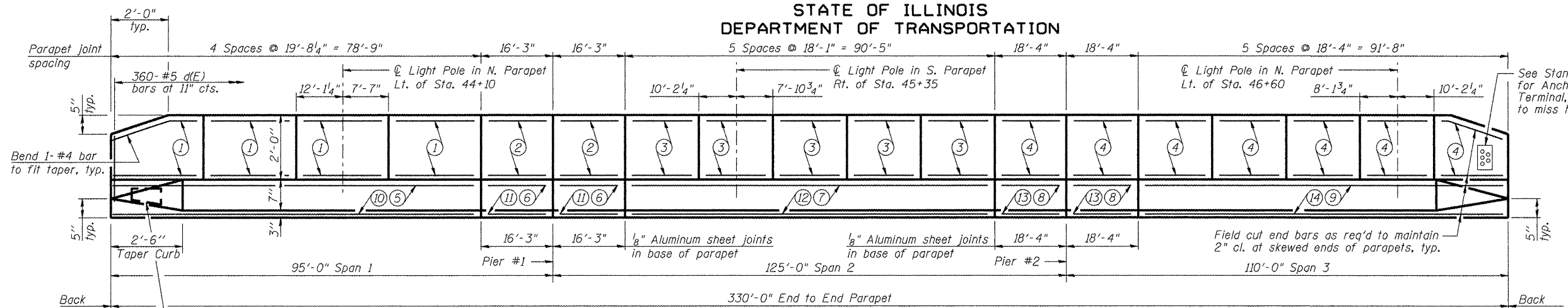


STATE OF ILLINOIS  
DEPARTMENT OF TRANSPORTATION



See Standard 631031 for Holes for Anchorage of Traffic Barrier Terminal, Type 6, Space Reinforcement to miss holes, typ. 4 corners.

**SUPERSTRUCTURE  
BILL OF MATERIAL**

Bar	No.	Size	Length	Shape
a(E)	716	#5	29'-3"	—
a1(E)	437	#5	28'-10"	—
a2(E)	1424	#6	6'-0"	—
a3(E)	4	#5	32'-3"	—
a4(E)	4	#5	42'-6"	—
a5(E)	716	#5	37'-3"	—
a6(E)	437	#5	36'-10"	—
a7(E)	48	#5	2'-0"	—
b(E)	781	#5	32'-0"	—
b1(E)	136	#6	37'-3"	—
b2(E)	540	#5	35'-0"	—
b3(E)	68	#6	24'-4"	—
b4(E)	68	#6	31'-6"	—
d(E)	720	#5	5'-7"	—
d1(E)	720	#5	8'-0"	—
d2(E)	9	#6	4'-5"	—
d3(E)	15	#6	8'-11"	—
e(E)	56	#4	19'-4"	—
e1(E)	28	#4	15'-11"	—
e2(E)	70	#4	17'-9"	—
e3(E)	98	#4	18'-0"	—
e4(E)	6	#8	28'-5"	—
e5(E)	4	#8	15'-11"	—
e6(E)	6	#8	32'-4"	—
e7(E)	4	#8	18'-0"	—
e8(E)	6	#8	32'-9"	—
e9(E)	6	#4	27'-0"	—
e10(E)	4	#4	15'-11"	—
e11(E)	6	#4	30'-11"	—
e12(E)	4	#4	18'-0"	—
e13(E)	6	#4	31'-4"	—
m(E)	4	#6	32'-9"	—
m1(E)	6	#6	34'-0"	—
m2(E)	36	#6	11'-2"	—
m3(E)	16	#6	8'-2"	—
m4(E)	4	#6	3'-8"	—
m5(E)	4	#6	42'-2"	—
m6(E)	6	#6	43'-2"	—
s(E)	124	#5	7'-9"	—
s1(E)	124	#4	12'-2"	—
v(E)	132	#5	3'-4"	—
Reinforcement Bars, Epoxy Coated	Pound		172,160	
Concrete Superstructure	Cu. Yds.		704.9	

Bars indicated thus 1 x 3-#5 etc. indicates 1 line of bars with 3 lengths per line.

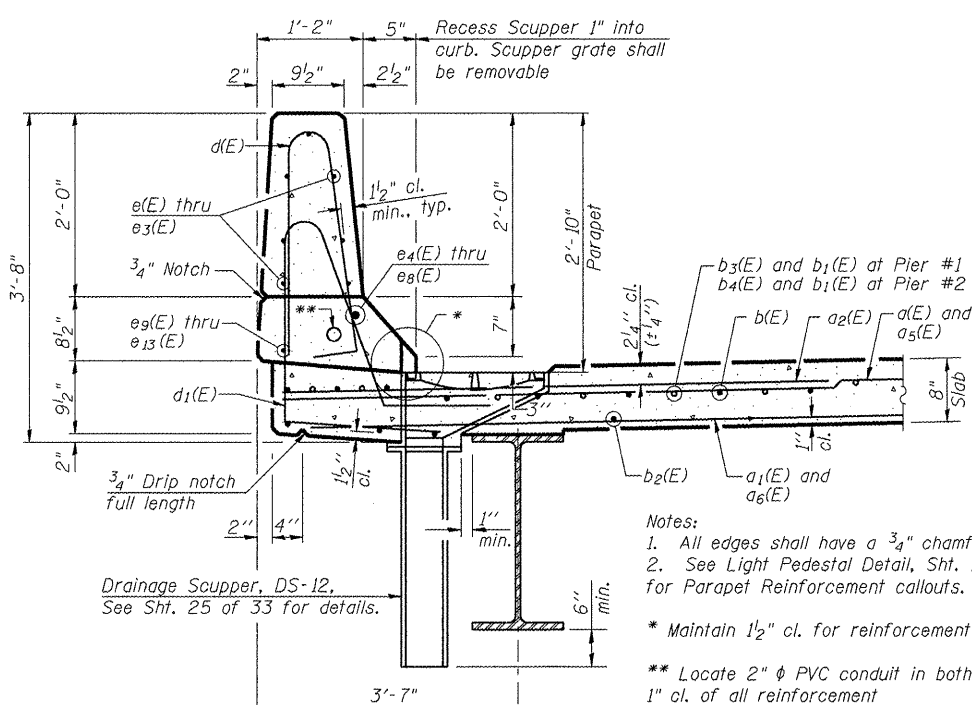
**PARAPET HORIZONTAL REINFORCEMENT CALLOUTS**

Reinforcement shall not pass thru joints. See Section thru Parapet for placement.

Top of Parapet 7-#4 bars	1 7-#4 e(E) bars Typ. 4 Panels	2 7-#4 e1(E) bars Typ. 2 Panels	3 7-#4 e2(E) bars Typ. 5 Panels	4 7-#4 e3(E) bars Typ. 7 Panels
Front Face Top of Curb 1-#8 bar	5 1x3-#8 e4(E) bars Typ. 2 Panels	6 1-#8 e5(E) bars Typ. 2 Panels	7 1-#8 e6(E) bars Typ. 2 Panels	8 1-#8 e7(E) bars Typ. 2 Panels
Back Face Bottom of Curb 1-#4 bar	10 1x3-#4 e9(E) bars Typ. 2 Panels	11 1-#4 e10(E) bars Typ. 2 Panels	12 1x3-#4 e11(E) bars Typ. 2 Panels	13 1-#4 e12(E) bars Typ. 2 Panels
	14 1x3-#4 e13(E) bars			

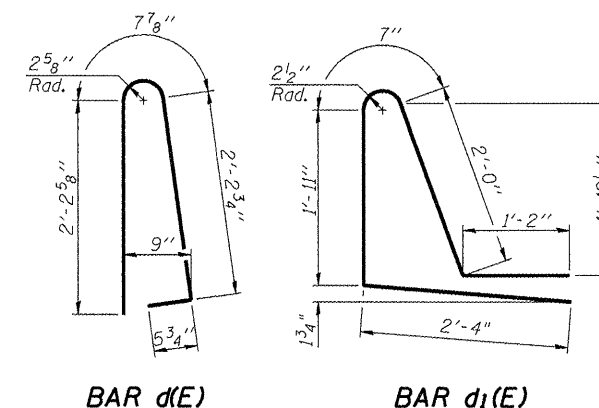
**INSIDE ELEVATION OF PARAPET**

Dimensions given along curb line at base of parapet. North Parapet shown, except as noted for light poles. South similar. See Sht. 13 of 33 for Light Pole Foundation Details.



**MINIMUM BAR LAP**

(Parapet)  
#4 bar = 1'-4"  
#8 bar = 3'-5"

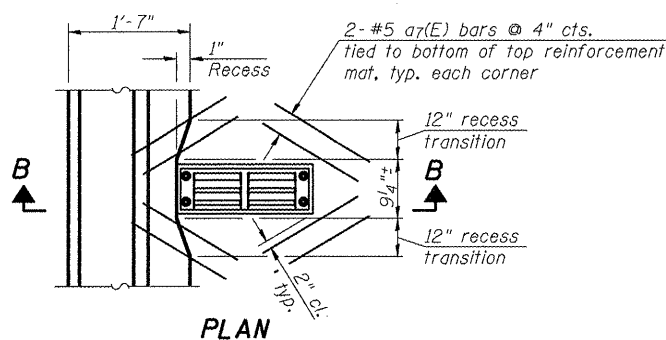


BAR d(E)

BAR d1(E)

BAR d2(E)

BAR d3(E)

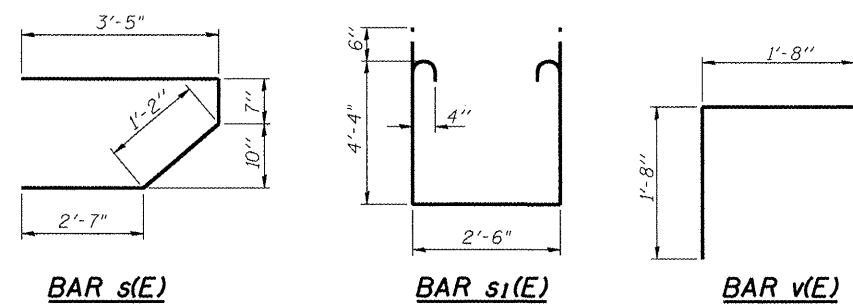


PLAN

Note: Cut longitudinal reinforcement to clear drainage scuppers.

**SECTION B-B THRU PARAPET**

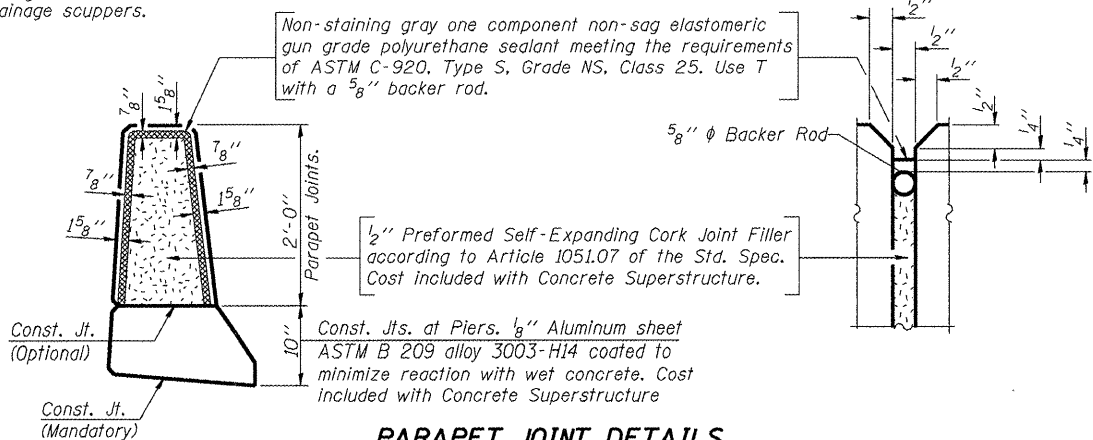
Notes:  
1. All edges shall have a 3/4" chamfer.  
2. See Light Pedestal Detail, Sht. 13 of 33 for Parapet Reinforcement callouts.  
\* Maintain 1/2" cl. for reinforcement at recess  
\*\* Locate 2" φ PVC conduit in both parapets 1" cl. of all reinforcement



BAR s(E)

BAR s1(E)

BAR v(E)



**PARAPET JOINT DETAILS**

DESIGNED	PJL
CHECKED	LLV
DRAWN	MGM
CHECKED	PJL

STS | AECOM

111 NE Jefferson Avenue  
Peoria, IL 61602  
T 309.676.8464  
Fax 309.676.5445  
IL Design Firm Reg.  
No. 184-001518  
www.stsconsultants.com

SHEET NO. 12  
OF  
33 SHEETS

F.A.U. RTE.	SECTION	COUNTY	TOTAL SHEETS	SHEET NO.
6578	(1-R)RS(1-VC)BR	PEORIA	142	72
STRUCTURE NO. 072-0201		CONTRACT NO. 68092		
FED. ROAD DIST. NO. ILLINOIS		FED. AID PROJECT		

**PARAPET DETAILS  
AIRPORT ROAD OVER U.P.R.R.  
AND KICKAPOO CREEK TRIBUTARY  
STATION 45+42.00**