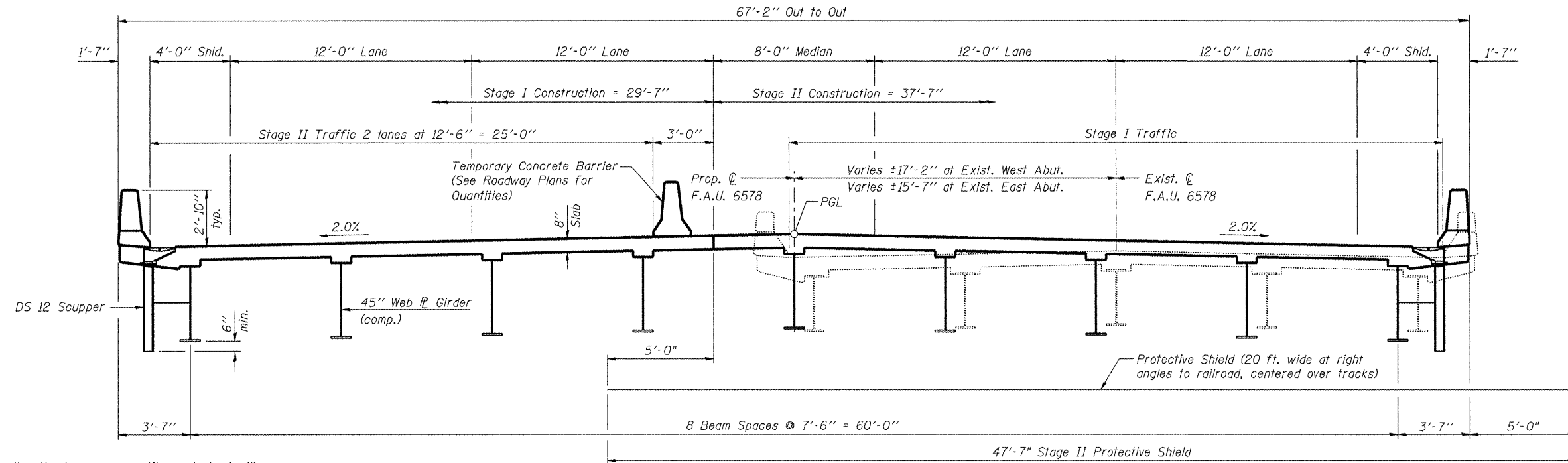


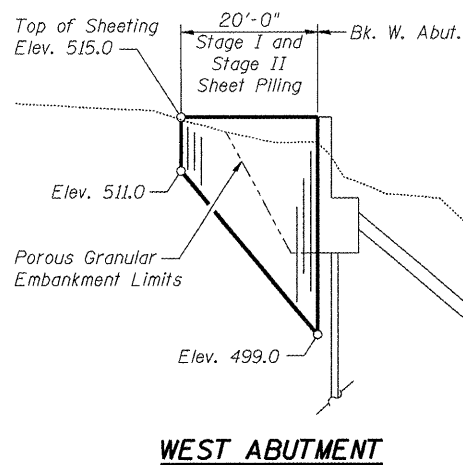
STATE OF ILLINOIS
DEPARTMENT OF TRANSPORTATION



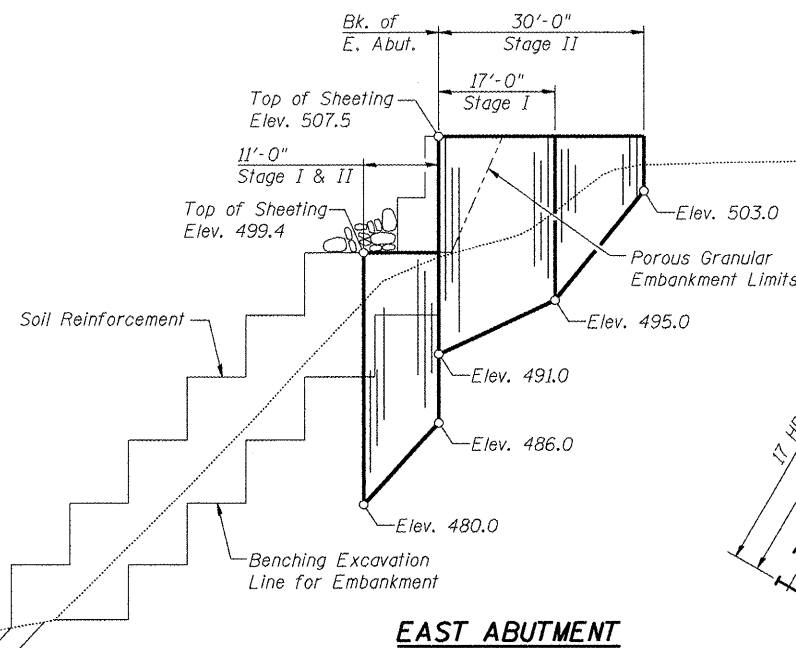
Notes

1. If the Contractor chooses to alter the temporary cantilevered sheet piling design requirements shown on the plans, a design submittal including plan details and calculations will be required for review and acceptance by the Engineer.
2. Temporary Sheet Piling shown is minimum amount required for embankment construction. The Contractor shall not drive Temporary Sheet Piling until approved RSS Slope shop drawings are acquired. If additional Temporary Sheet Piling is necessary to accommodate RSS System requirements, revised design calculations and details shall be submitted to the Engineer for approval. The calculations shall be prepared and sealed by an Illinois Licensed Structural Engineer. This approval will not relieve the Contractor of responsibility for the safety of the excavation.
3. At East Abutment, coordinate Temporary Sheet Piling with Reinforced Soil Slope System. See Shi. 26 of 33.

STAGE CONSTRUCTION CROSS SECTION



WEST ABUTMENT



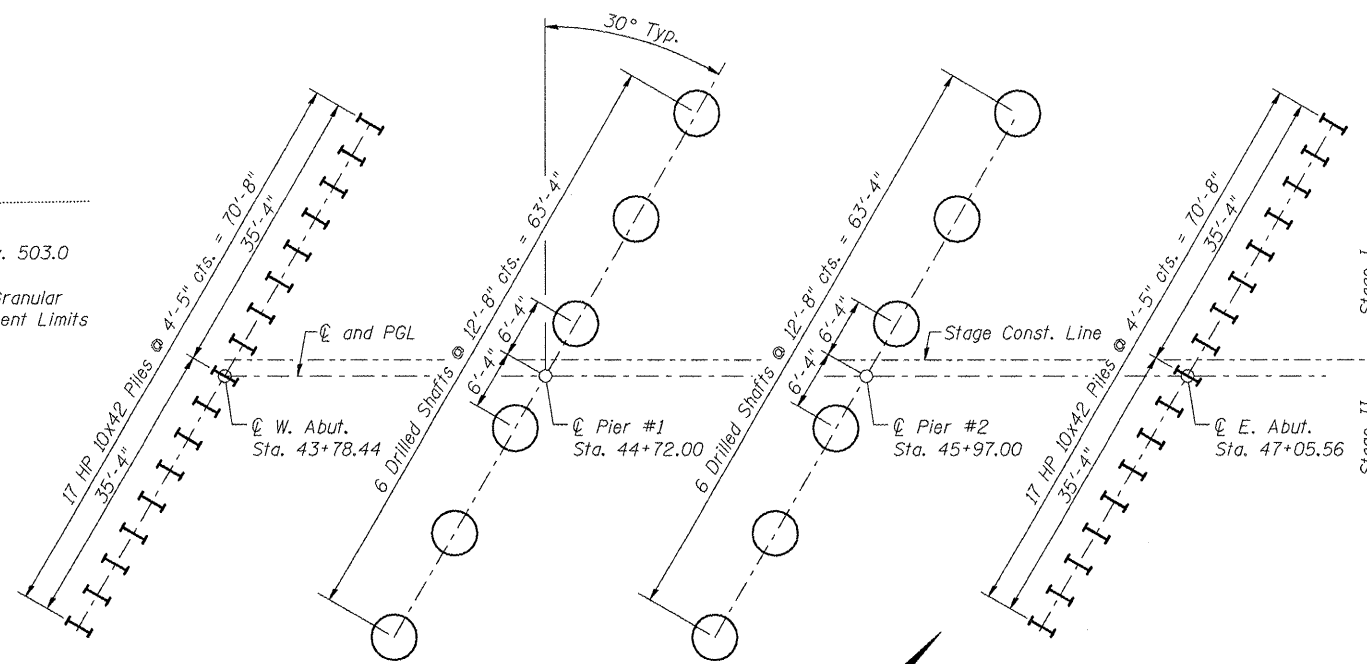
EAST ABUTMENT

TEMPORARY SHEET PILING

Minimum required section modulus = 4.3 cubic inches / foot.

BILL OF MATERIAL

| ITEM | UNIT | QUANTITY |
|--------------------------------|---------|----------|
| Removal of Existing Structures | Each | 1 |
| Protective Shield | Sq. Yd. | 106 |
| Temporary Sheet Piling | L. Sum | 1 |



SUBSTRUCTURE LAYOUT

**STAGE CONSTRUCTION & SUBSTRUCTURE LAYOUT
AIRPORT ROAD OVER U.P.R.R.
AND KICKAPOO CREEK TRIBUTARY
STATION 45+42.00**

| | |
|----------|-----|
| DESIGNED | PJL |
| CHECKED | LLV |
| DRAWN | MGM |
| CHECKED | PJL |

STS | AECOM
111 NE Jefferson Avenue
Peoria, IL 61602
T 309.676.8464
F 309.676.5445
IL Design Firm Reg.
No. 184-001518
www.stsconsultants.com

SHEET NO. 3
OF
33 SHEETS

| | | | | |
|---|-----------------|--------------------|--------------|-----------|
| F.A.U. RTE. | SECTION | COUNTY | TOTAL SHEETS | SHEET NO. |
| 6578 | (1-R)RS(1-VC)BR | PEORIA | 142 | 63 |
| STRUCTURE NO. 072-0201 | | CONTRACT NO. 68092 | | |
| FED. ROAD DIST. NO. _ ILLINOIS FED. AID PROJECT | | | | |