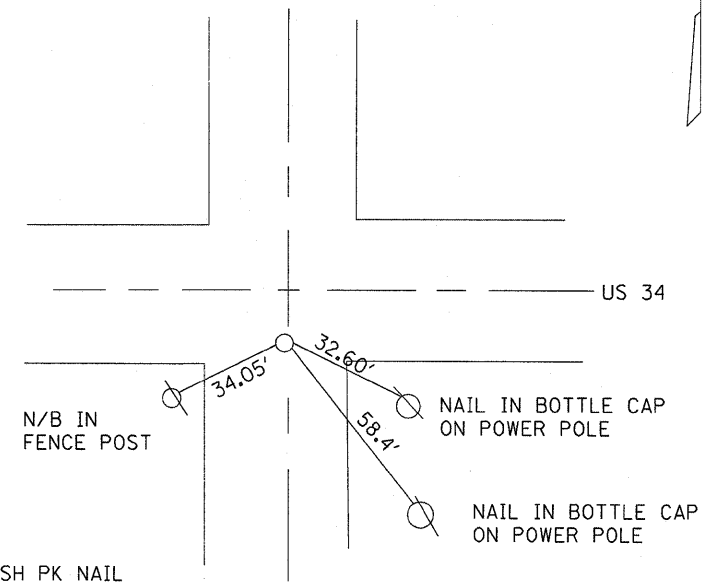
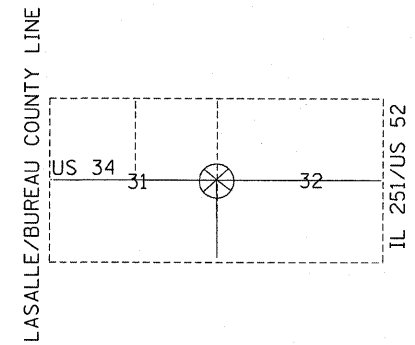


**BUTT JOINT DETAIL  
AT PROJECT LIMITS**



R.E. SHALL REESTABLISH PK NAIL  
IN PAVEMENT AT COMPLETION  
OF PROJECT

**TIE POINT DETAIL**  
LOCATED 0.9 MILES WEST OF IL 251

FILE NAME =	USER NAME = braboyco	DESIGNED - ---	REVISED - ---	STATE OF ILLINOIS DEPARTMENT OF TRANSPORTATION	DETAILS	F.A.P. RTE.		SECTION	COUNTY	TOTAL SHEETS	SHEET NO.
c:\pw\work\p\dot\braboyco\dms40744\036835 Details.DGN		DRAWN - ---	REVISED - ---			587	(22)I & I-1	LASALLE	31	24	
	PLOT SCALE = 50.0000 ' / IN.	CHECKED - ---	REVISED - ---			CONTRACT NO. 66835					
	PLOT DATE = Oct 17, 2008 - 07:40:31 AM	DATE - -----	REVISED - ---								
SCALE: _____		SHEET NO. __ OF __ SHEETS				STA. _____ TO STA. _____		FED. ROAD DIST. NO. - ILLINOIS FED. AID PROJECT			