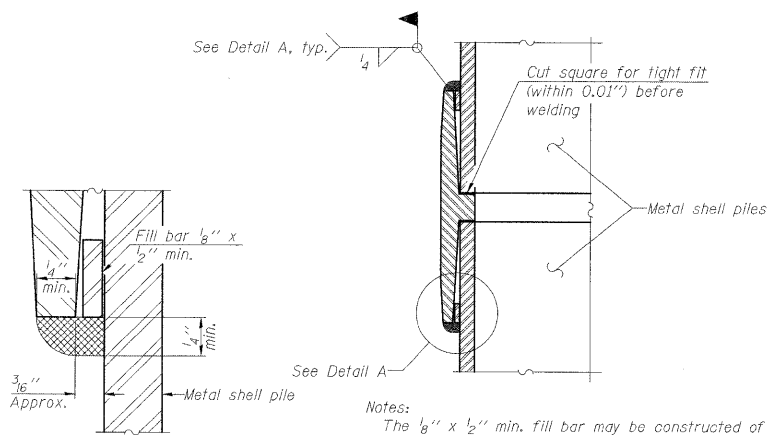


METAL SHELL PILE TABLE

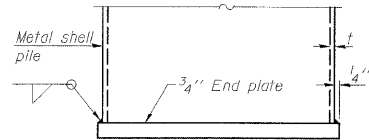
Designation and outside diameter	Wall thickness t	Weight per foot (Lbs./ft.)	Inside volume (yd. ³ /ft.)
PP12	0.179"	22.60	0.0274
PP12	0.250"	31.37	0.0267
PP14	0.250"	36.71	0.0368
PP14	0.312"	45.61	0.0361



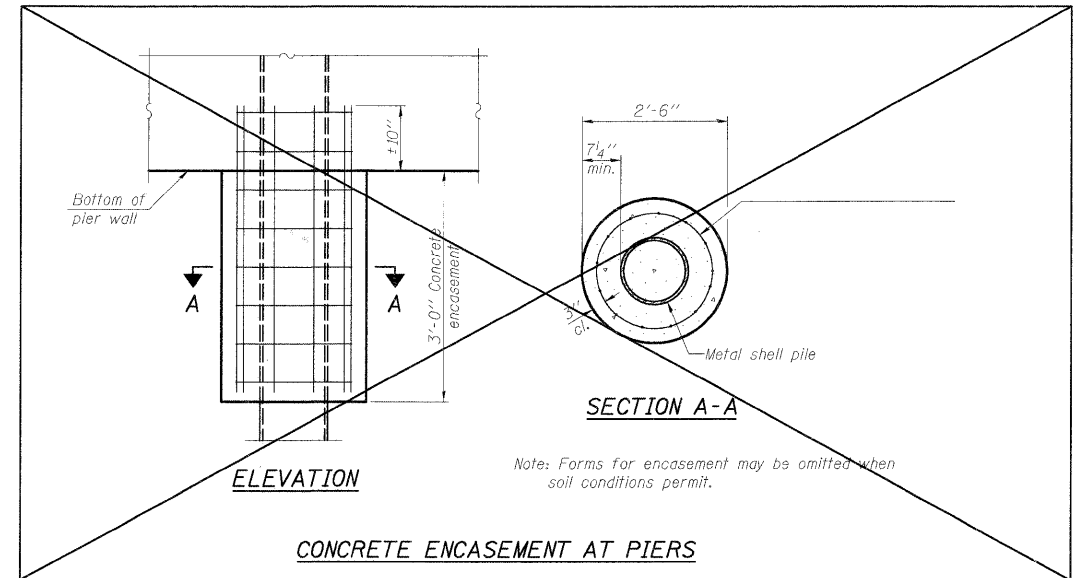
DETAIL A

Notes:
 The 1/8" x 1/2" min. fill bar may be constructed of 2 bars with a 1/8" max. gap between them.
 Pile segments shall be driven to solid contact with splicer before welding.

WELDED COMMERCIAL SPLICE

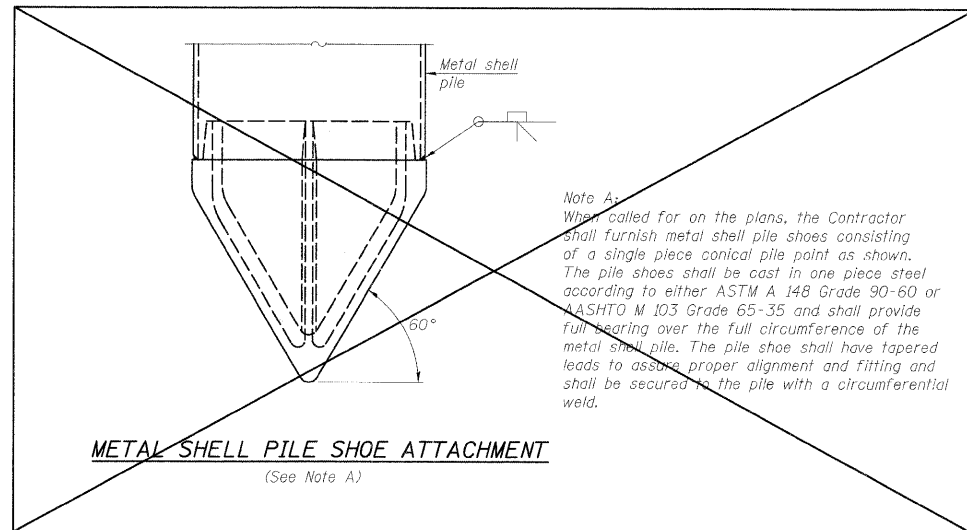


END PLATE ATTACHMENT



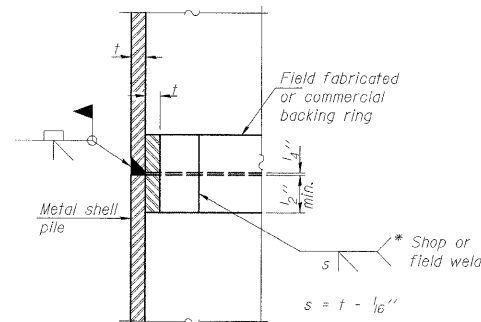
Note: Forms for encasement may be omitted when soil conditions permit.

CONCRETE ENCASEMENT AT PIERS



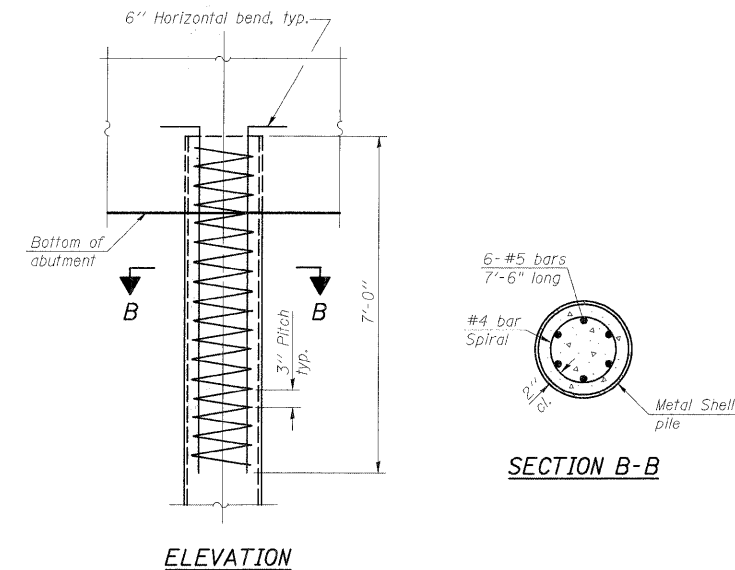
METAL SHELL PILE SHOE ATTACHMENT

(See Note A)



COMPLETE PENETRATION WELD SPLICE

* Field fabricated backing ring may be made from pile shell by removing segment to allow reducing circumference and vertically rejoin with partial joint penetration weld.

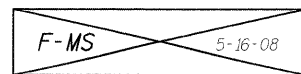


ELEVATION

METAL SHELL REINFORCEMENT AT ABUTMENTS

**METAL SHELL PILE DETAILS
 STRUCTURE NO. N/A**

Note: The metal shell piles shall be according to ASTM A 252 Grade 3.



CHRISTOPHER B. BURKE ENGINEERING, LTD.
 9575 W. Higgins Road, Suite 600
 Rosemont, Illinois 60018
 (847) 823-0500



FILE NAME =	USER NAME = MAGOLDEN	DESIGNED - WJS	REVISED -
N:\D:\landhill\11\280156\Struct\080156-55.PLN		DRAWN - PDR	REVISED -
		CHECKED - MM	REVISED -
		DATE -	REVISED -

**STATE OF ILLINOIS
 DEPARTMENT OF TRANSPORTATION**

METAL SHELL PILE DETAILS

SHEET NO. 5-4 OF 5-6

F.A.S. RTE.	SECTION	COUNTY	TOTAL SHEETS	SHEET NO.
N/A	06-00021-00-BT	COOK	60	24
CONTRACT NO. 63084				
FED. ROAD DIST. NO. 1 ILLINOIS FED. AID PROJECT BRM-8003(043)				

LAKE LORIN BIKE TRAIL
 OVER TINLEY CREEK
 SECTION 06-00021-01-BT
 COOK COUNTY, ILLINOIS
 STA. 142+72.63
 STRUCTURE NO. N/A