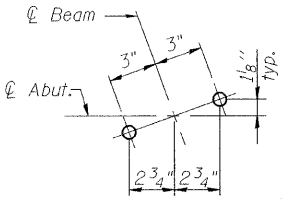
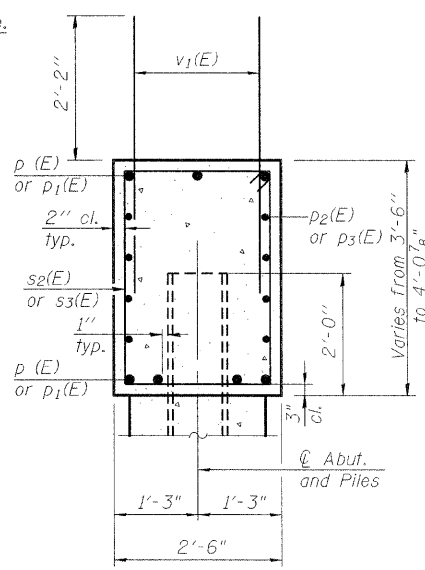
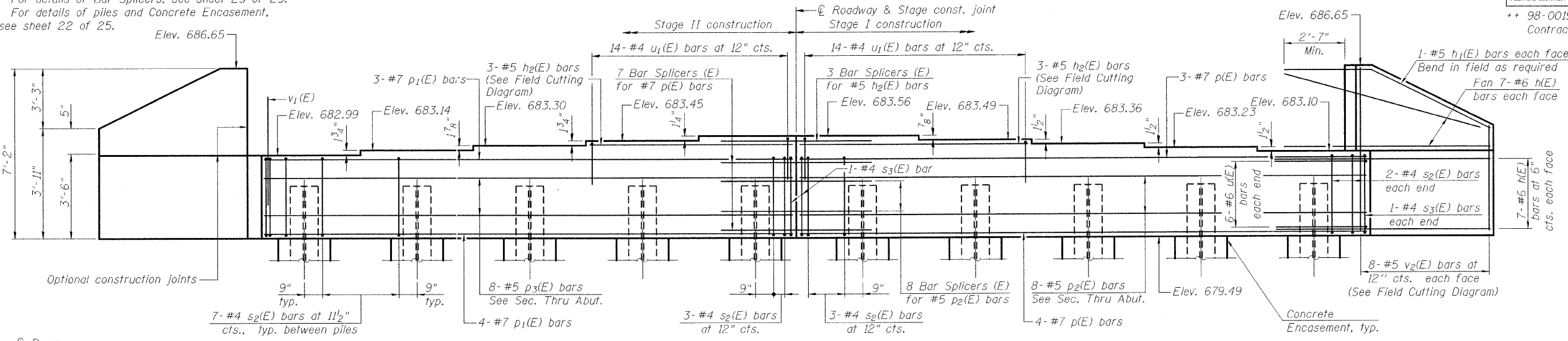


STATE OF ILLINOIS
DEPARTMENT OF TRANSPORTATION

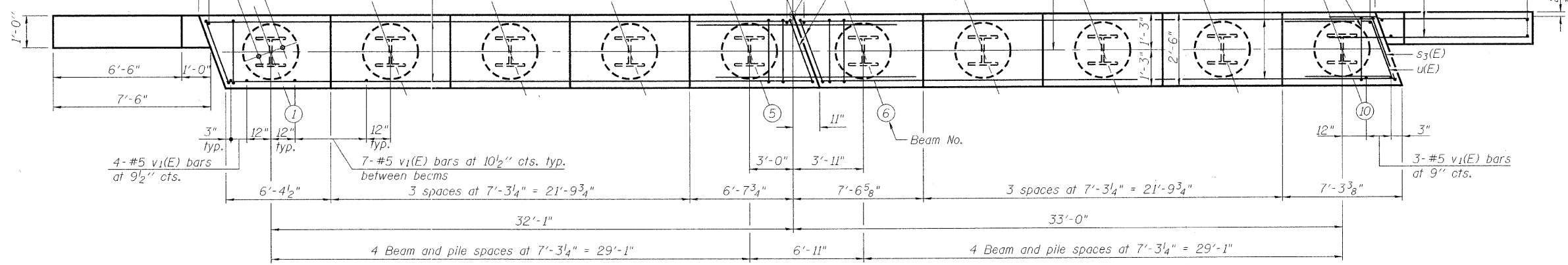
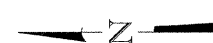
ROUTE NO.	SECTION	COUNTY	TOTAL SHEETS	SHEET NO.
345	++	DU PAGE	65	50
FED. ROAD DIST. NO. 7		MARKS	FED. AID PROJECT	
++ 98-00153-02-BR		Contract No. 63077		

SHEET NO. 20
25 SHEETS

Notes:
Space reinforcement in cap to miss anchor bolts.
Pour steps monolithically with cap.
For details of Bar Splicers, see sheet 23 of 25.
For details of piles and Concrete Encasement, see sheet 22 of 25.



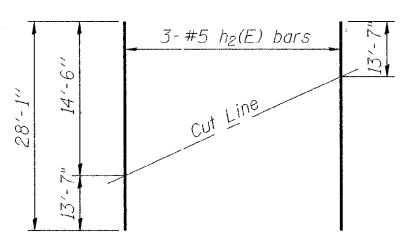
DETAIL A



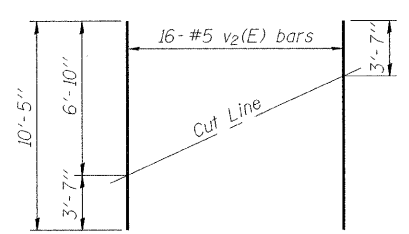
PILE DATA

Type: HP 10 x 57 w/Pile Shoes
Nominal Required Bearing: 454 kips
Factored Resistance Available: 151 kips
Est. Length: 70 ft.
No. Production Piles: 9
No. Test Piles: 1

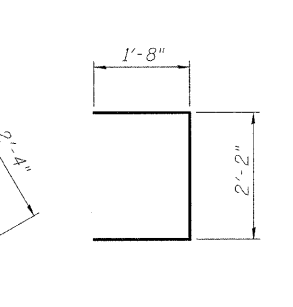
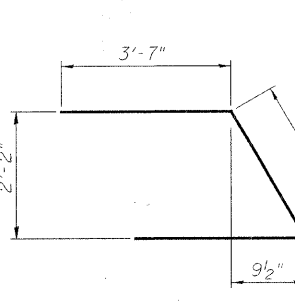
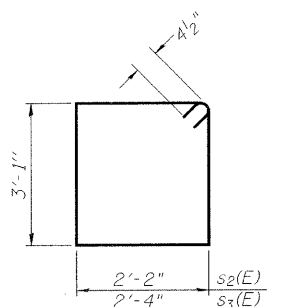
DESIGNED	J.ZUO
CHECKED	M.SHAIKH
DRAWN	D.C.PATEL
CHECKED	J.GRAINAWI



Order h2(E) full length. Cut as shown and use remainder of bars in stage II Construction.



Order v2(E) full length. Cut as shown and use remainder of bars in opposite face.



BILL OF MATERIAL

Bar No.	Size	Length	Shape
h(E)	#6	10'-0"	—
h1(E)	#5	10'-9"	—
h2(E)	#5	28'-1"	—
p(E)	#7	35'-2"	—
p1(E)	#7	35'-6"	—
p2(E)	#5	35'-2"	—
p3(E)	#5	35'-6"	—
s2(E)	#4	11'-3"	□
s3(E)	#4	11'-7"	□
u(E)	#6	9'-6"	└
u1(E)	#4	5'-6"	└
v1(E)	#5	4'-4"	—
v2(E)	#5	10'-5"	—
Structure Excavation	Cu. Yd.	101	
Concrete Structures	Cu. Yd.	25.4	
Concrete Encasement	Cu. Yd.	3.5	
Reinforcement Bars, Epoxy Coated	Pound	4200	
Furnishing Steel Piles, HP 10x57	Foot	630	
Driving Piles, HP 10x57	Foot	630	
Test Pile Steel, HP 10x57	Each	1	
Pile Shoes	Each	10	

EAST ABUTMENT
F.A.P. RT. 345 - SEC. 98-00153-02-BR
DU PAGE COUNTY
STATION 107+17.50
STRUCTURE NO. 022-3011



G:\16835 Throadie PhaseII\Struct\Cadd\Pre-final\0223011-00153-020.dgn 04-SEP-2008 11:18