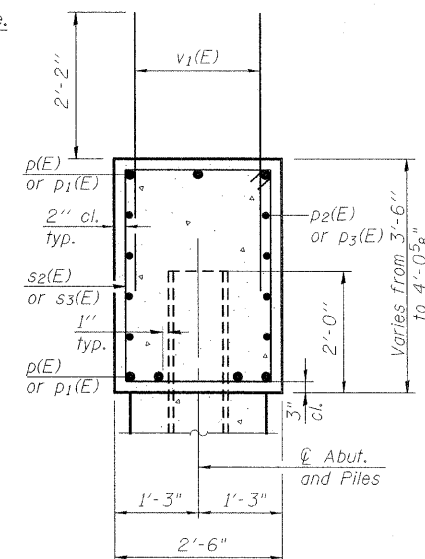
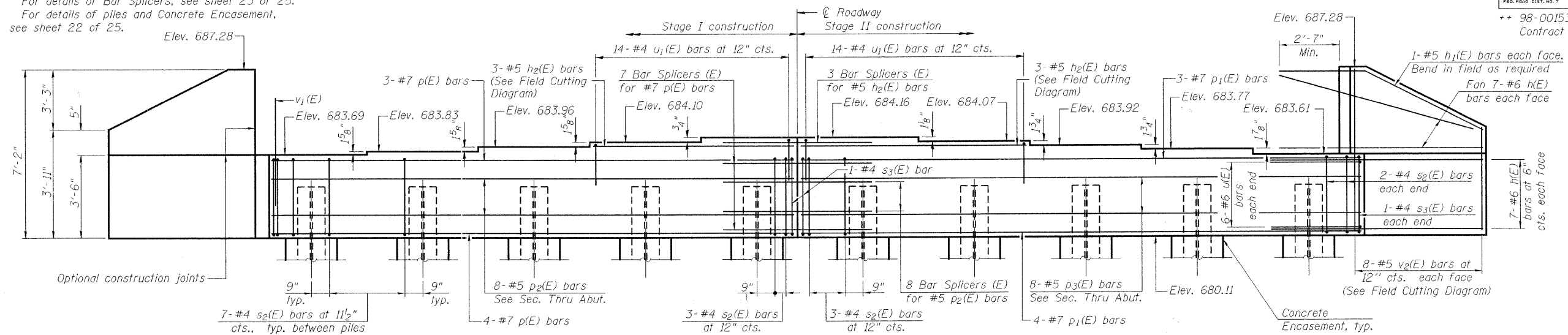


STATE OF ILLINOIS  
DEPARTMENT OF TRANSPORTATION

|                       |         |          |                   |           |                           |
|-----------------------|---------|----------|-------------------|-----------|---------------------------|
| ROUTE NO.             | SECTION | COUNTY   | TOTAL SHEETS      | SHEET NO. | SHEET NO. 19<br>25 SHEETS |
| 345                   | ++      | DU PAGE  | 65                | 49        |                           |
| FED. ROAD DIST. NO. 7 |         | ILLINOIS | FED. AID PROJECT- |           |                           |

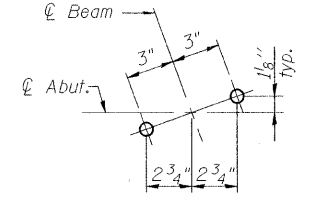
98-00153-02-BR  
Contract No. 63077

Notes:  
Space reinforcement in cap to miss anchor bolts.  
Four steps monolithically with cap.  
For details of Bar Splicers, see sheet 23 of 25.  
For details of piles and Concrete Encasement, see sheet 22 of 25.

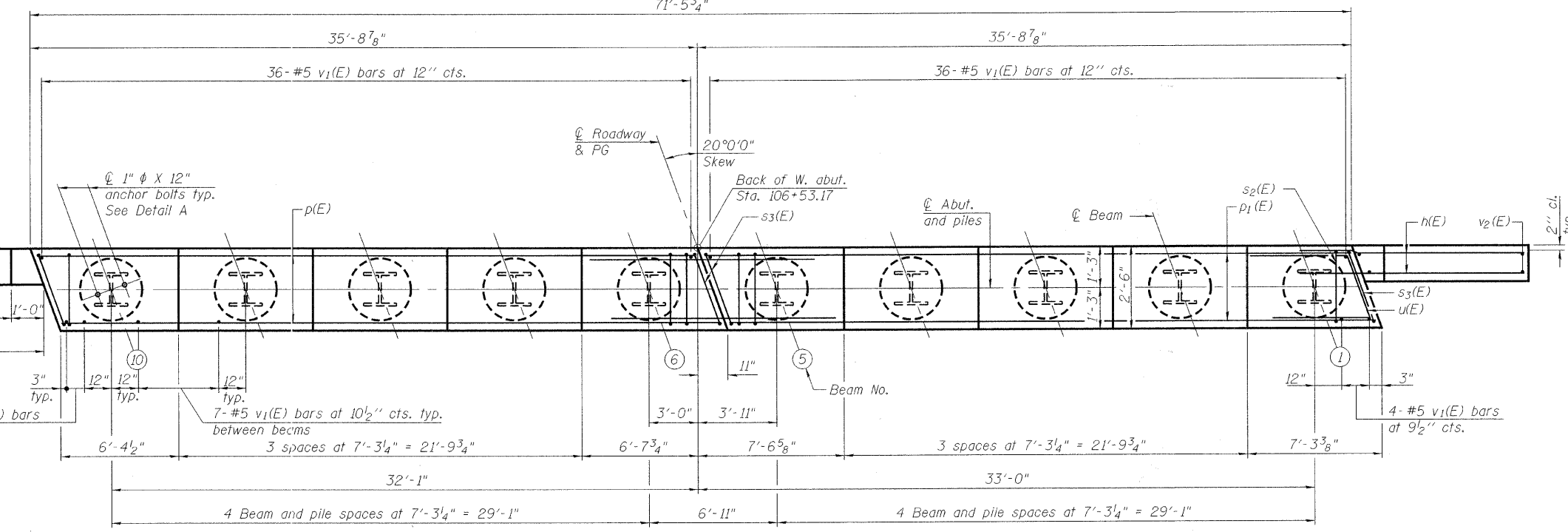


ELEVATION

SEC. THRU ABUT.



DETAIL A



PLAN

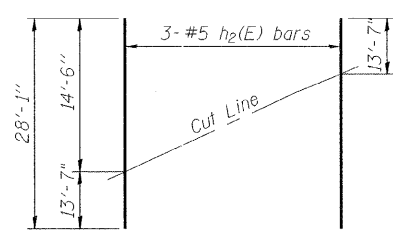
BILL OF MATERIAL

| Bar No.                          | Size    | Length | Shape |
|----------------------------------|---------|--------|-------|
| h(E)                             | #6      | 10'-0" | —     |
| h1(E)                            | #5      | 10'-9" | —     |
| h2(E)                            | #5      | 28'-1" | —     |
| p(E)                             | #7      | 35'-2" | —     |
| p1(E)                            | #7      | 35'-6" | —     |
| p2(E)                            | #5      | 35'-2" | —     |
| p3(E)                            | #5      | 35'-6" | —     |
| s2(E)                            | #4      | 11'-3" | □     |
| s3(E)                            | #4      | 11'-7" | □     |
| u(E)                             | #6      | 9'-6"  | └     |
| u1(E)                            | #4      | 5'-6"  | └     |
| v1(E)                            | #5      | 4'-4"  | —     |
| v2(E)                            | #5      | 10'-5" | —     |
| Structure Excavation             | Cu. Yd. | 85     |       |
| Concrete Structures              | Cu. Yd. | 25.4   |       |
| Concrete Encasement              | Cu. Yd. | 3.5    |       |
| Reinforcement Bars, Epoxy Coated | Pound   | 4200   |       |
| Furnishing Steel Piles, HP 10x57 | Foot    | 630    |       |
| Driving Piles                    | Foot    | 630    |       |
| Test Pile Steel, HP 10x57        | Each    | 1      |       |
| Pile Shoes                       | Each    | 10     |       |

PILE DATA

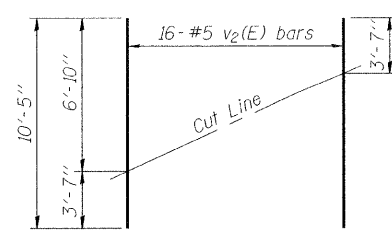
Type: HP 10 x 57 w/Pile Shoes  
Nominal Required Bearing: 454 kips  
Factored Resistance Available: 151 kips  
Est. Length: 70 ft.  
No. Production Piles: 9  
No. Test Piles: 1

|          |            |
|----------|------------|
| DESIGNED | J.ZUO      |
| CHECKED  | M.SHAIKH   |
| DRAWN    | D.C.PATEL  |
| CHECKER  | J.GRAINAWI |



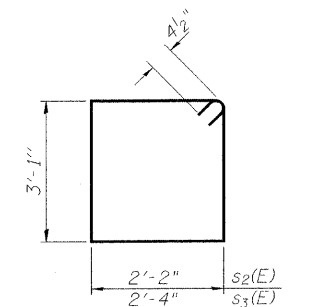
FIELD CUTTING DIAGRAM

Order h2(E) full length. Cut as shown and use remainder of bars in stage II Construction.

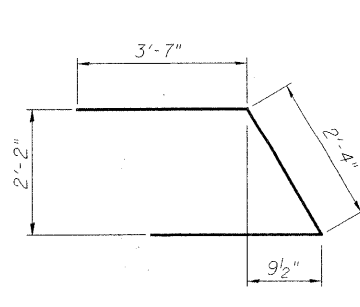


FIELD CUTTING DIAGRAM

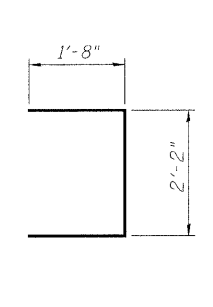
Order v2(E) full length. Cut as shown and use remainder of bars in opposite face.



BARS s2(E) & s3(E)



BAR u(E)



BAR u1(E)

WEST ABUTMENT  
F.A.P. RT. 345 - SEC. 98-00153-02-BR  
DU PAGE COUNTY  
STATION 107+17.50  
STRUCTURE NO. 022-3011



G:\16835 Thomdale Phase II\StructCadd\Pre-final\0223011-00163-019.dgn 04-SEP-2008 11:17