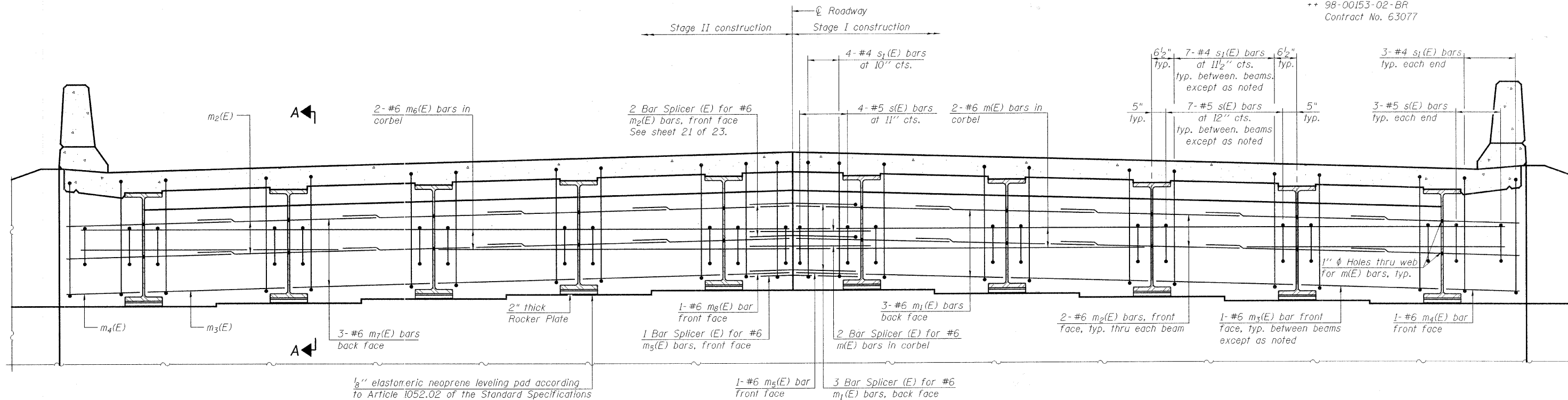


STATE OF ILLINOIS
DEPARTMENT OF TRANSPORTATION

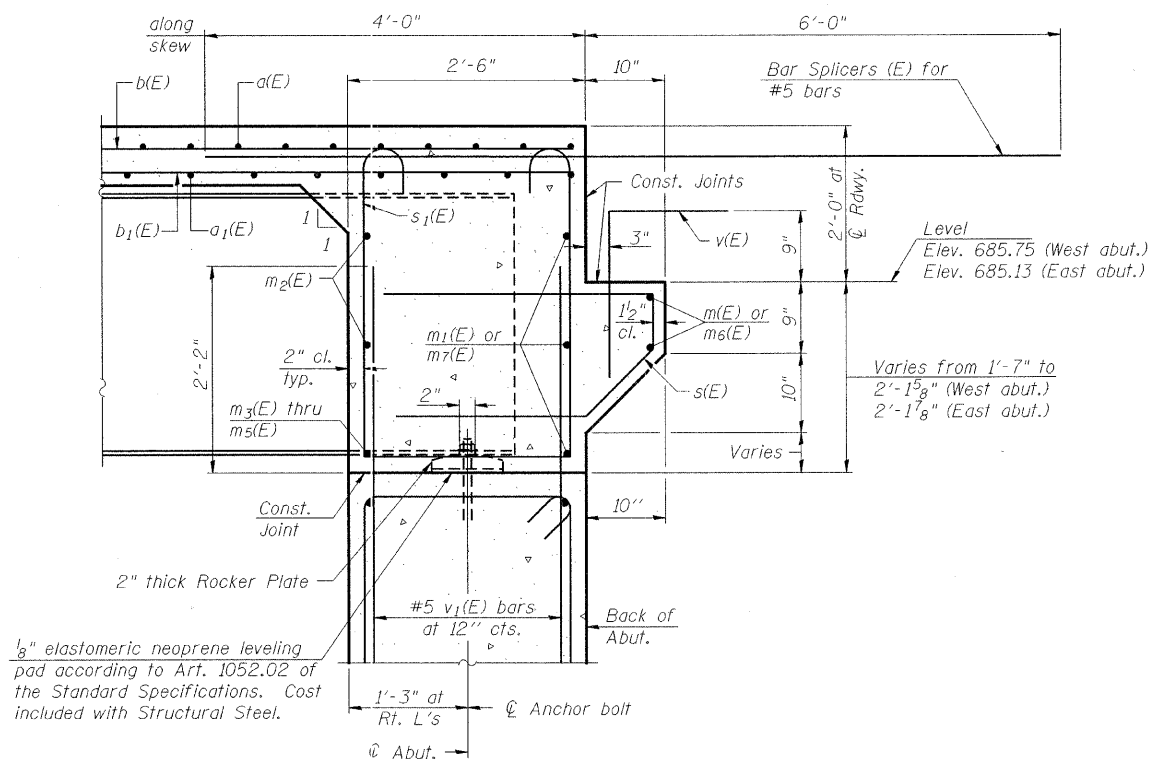
ROUTE NO.	SECTION	COUNTY	TOTAL SHEETS	SHEET NO.	SHEET NO. 14
345	++	DU PAGE	65	44	25 SHEETS
FED. ROAD DIST. NO. 7	ILLINOIS	FED. AID PROJECT			

++ 98-00153-02-BR
Contract No. 63077



DIAPHRAGM ELEVATION AT ABUTMENT
(East diaphragm shown, looking East. West diaphragm similar)

MIN. BAR LAP
#6 bar = 2'-9"



SECTION A-A
Dimensions at right angles to abutment, except as shown.

Notes:
Reinforcement bars in diaphragm are billed with superstructure on sheet 13 of 25.
Concrete in diaphragm is included with Concrete Superstructure on sheet 13 of 25.
For details of bars s(E) & s1(E) see sheet 13 of 25.
The s(E) and s1(E) bars shall be placed parallel to the beams. Spacing for these bars shall be at right angles to the beams.

DESIGNED	J.ZUO
CHECKED	M.SHAIKH
DRAWN	D.C.PATEL
CHECKED	J.GRAINAWI

DIAPHRAGM DETAILS
F.A.P. RT. 345 - SEC. 98-00153-02-BR
DU PAGE COUNTY
STATION 107+17.50
STRUCTURE NO. 022-3011

