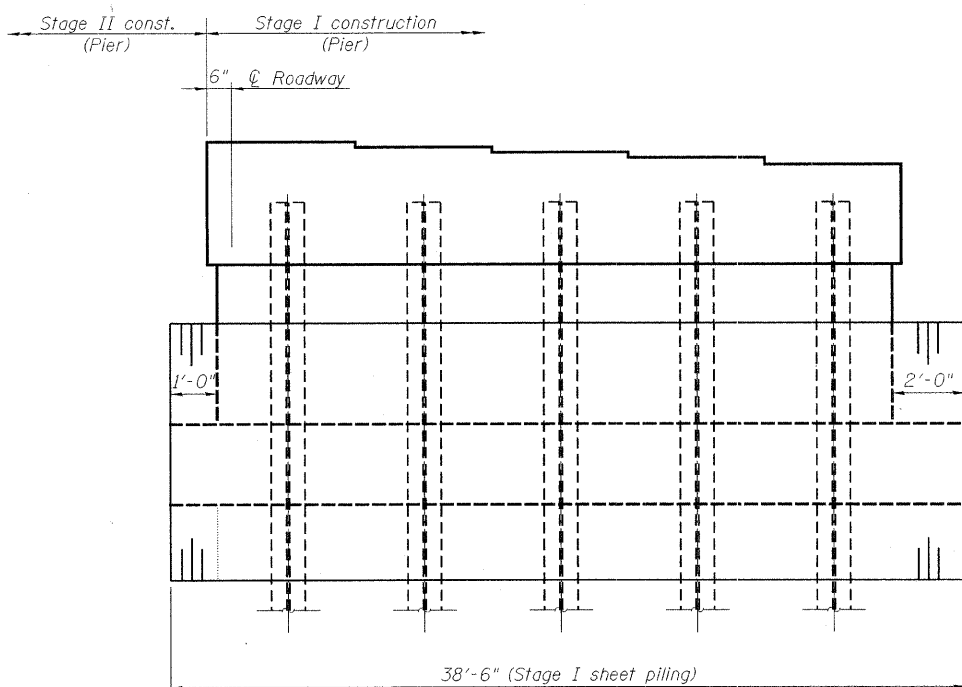


STATE OF ILLINOIS
DEPARTMENT OF TRANSPORTATION

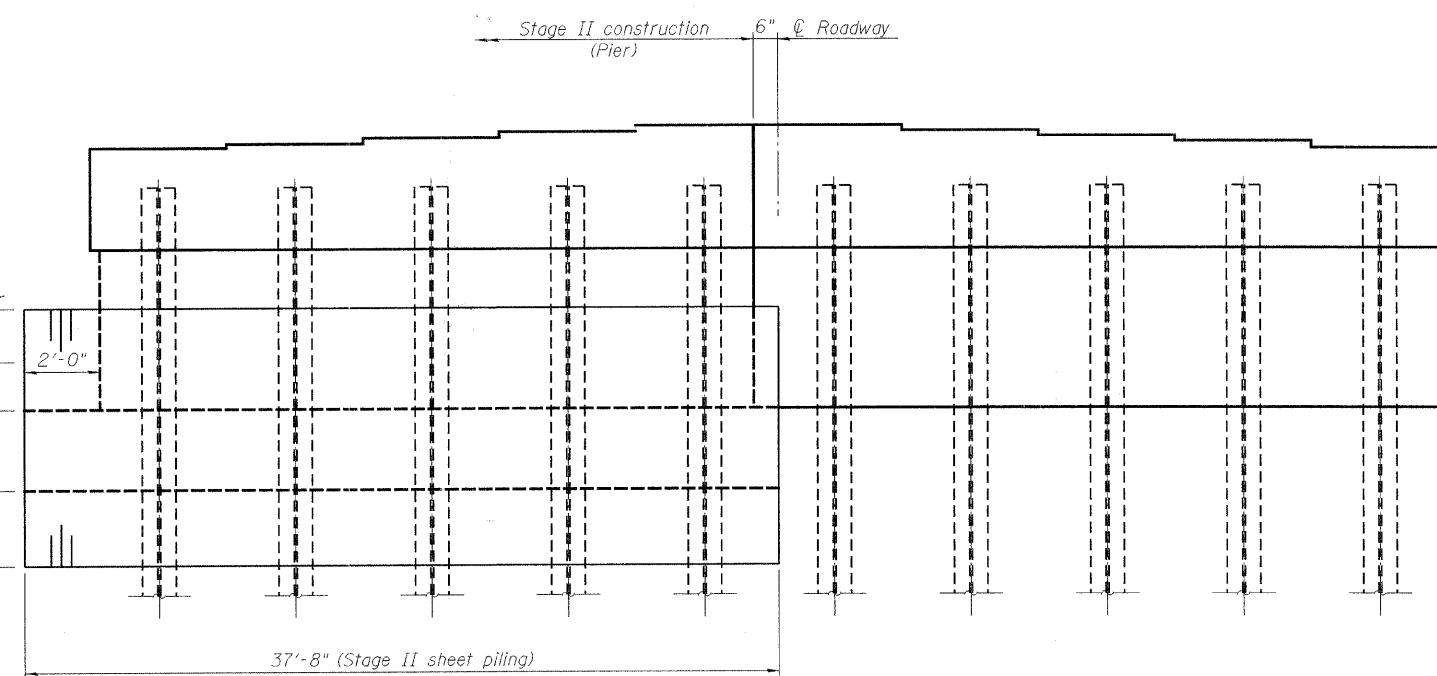
ROUTE NO.	SECTION	COUNTY	TOTAL SHEETS	SHEET NO.	SHEET NO.
345	++	DU PAGE	65	34	25 SHEETS
FED. ROAD DIST. NO. 7	ILLINOIS	FED. AID PROJECT			

++ 98-00153-02-BR
Contract No. 63077

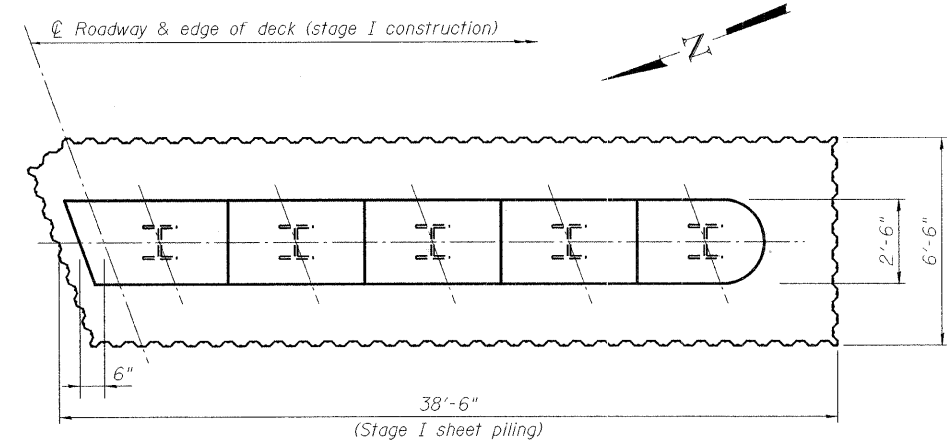


ELEVATION
(Stage I construction)

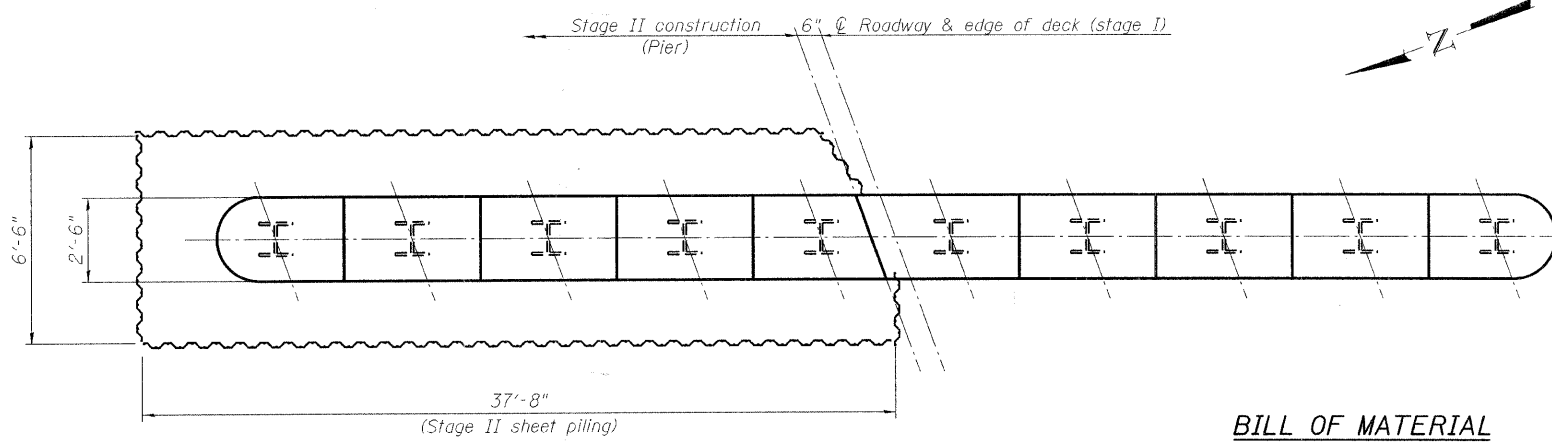
Cofferdam design water Elev. 678.90	Cofferdam design water Elev. 678.90
Streambed Elev. 670.05	Streambed Elev. 670.05
Bottom/ Wall Elev. 666.03	Bottom/ Wall Elev. 666.03
Bottom/ Seal Coat Elev. 662.53	Bottom/ Seal Coat Elev. 662.53
Bottom/ Sheet Piling Elev. 650.53	Bottom/ Sheet Piling Elev. 650.53



ELEVATION
(Stage II construction)



PLAN
(Stage I construction)



PLAN
(Stage II construction)

BILL OF MATERIAL

ITEM	UNIT	QUANTITY
Cofferdam Excavation	Cu. Yd.	138
Cofferdams	Each	1
Seal Coat Concrete	Cu. Yd.	64.2

Notes:
The information shown for the cofferdam at Pier is estimated. The Contractor is required to retain an Illinois Licensed Structural Engineer to design the cofferdam, cofferdam bracing, redesign the thickness of the seal coat, and all associated members. The plans and computations shall be submitted to the Bureau of Bridges and Structures for review and approval before any temporary construction work commences.
The seal coat shall be Class SC Concrete tremied underwater after the foundation piles have been driven.

DESIGNED	J.ZUO
CHECKED	J.MUHAMMAD
DRAWN	D.C.PATEL
CHECKED	J.GRAINAWI



COFFERDAM DETAILS
F.A.P. RT. 345 - SEC. 98-00153-02-BR
DU PAGE COUNTY
STATION 107+17.50
STRUCTURE NO. 022-3011

G:\16835 Thomdale Phase\Struct\Cadd\Pre\final\0223011-00163-004.dgn 04-SEP-2008 11:17