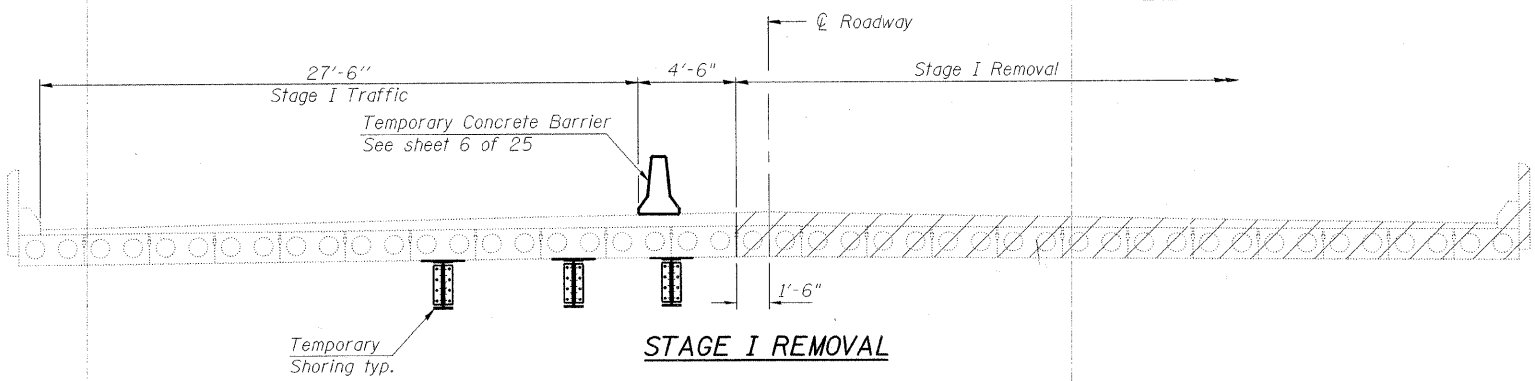


STATE OF ILLINOIS
DEPARTMENT OF TRANSPORTATION

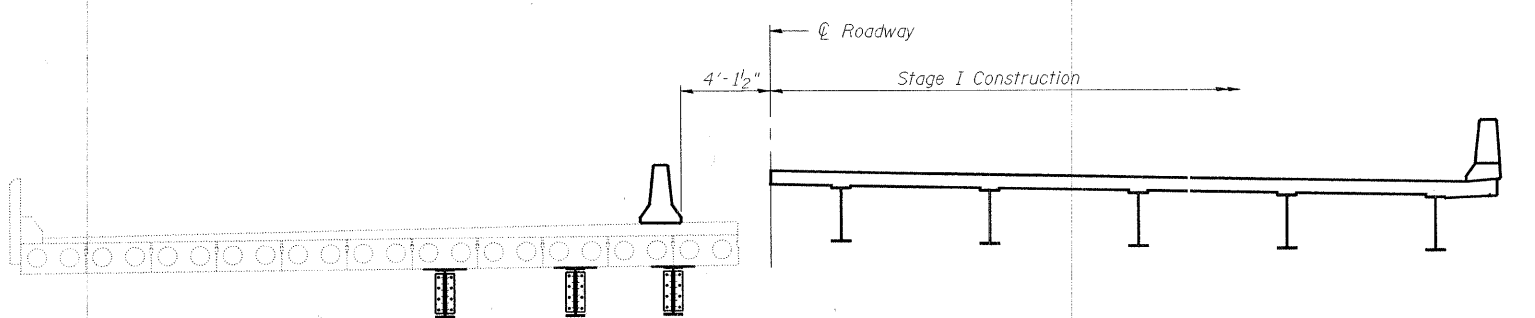
ROUTE NO.	SECTION	COUNTY	SHEET NO.	SHEET NO.
345	++	DU PAGE	65	33
FED. ROAD DIST. NO. 7		ILLINOIS	FED. AID PROJECT	

++ 98-00153-02-BR
Contract No. 63077

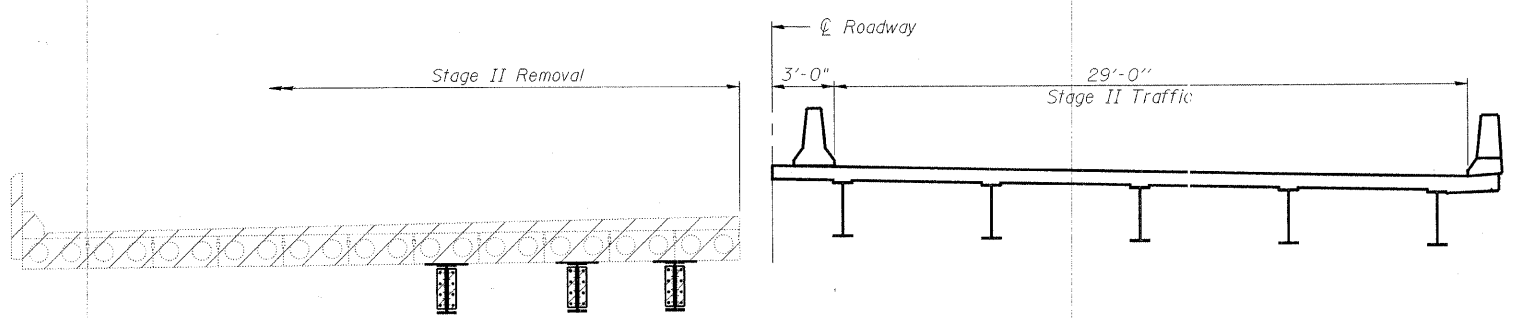
SHEET NO. 3
25 SHEETS



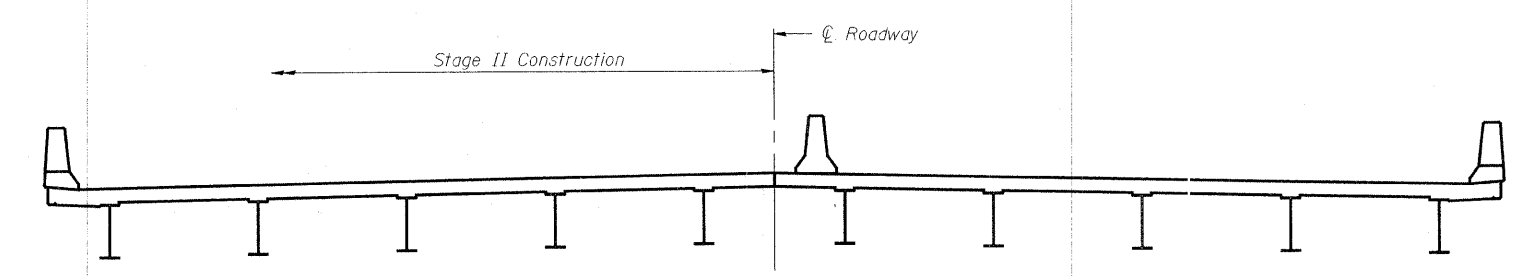
STAGE I REMOVAL



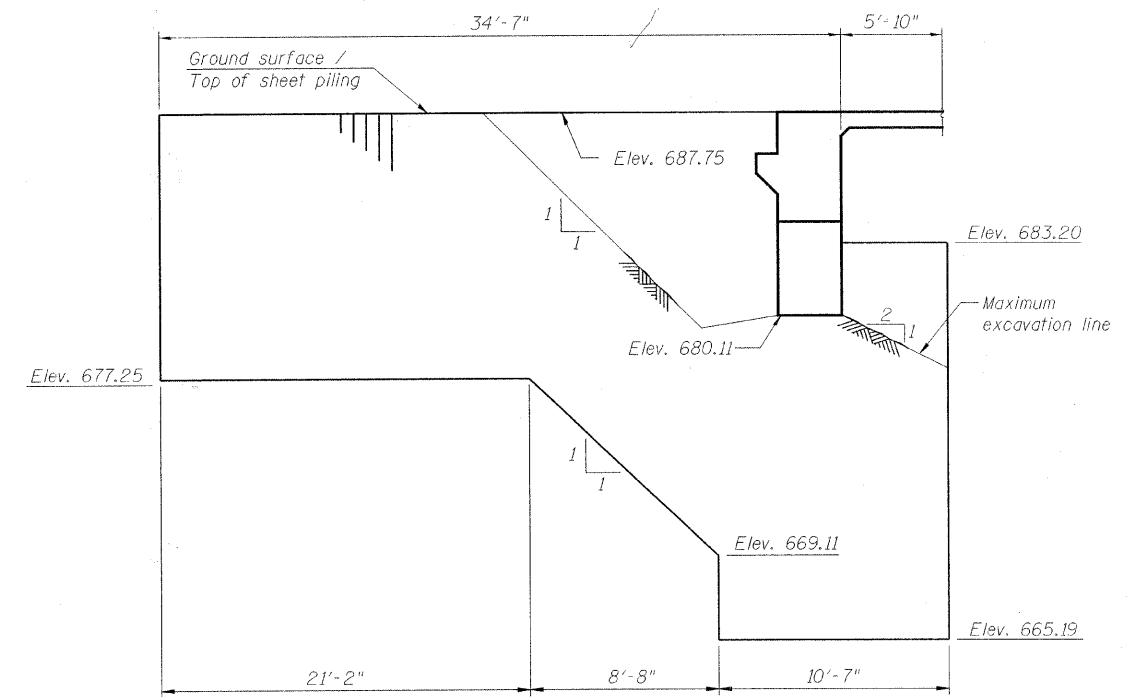
STAGE I CONSTRUCTION



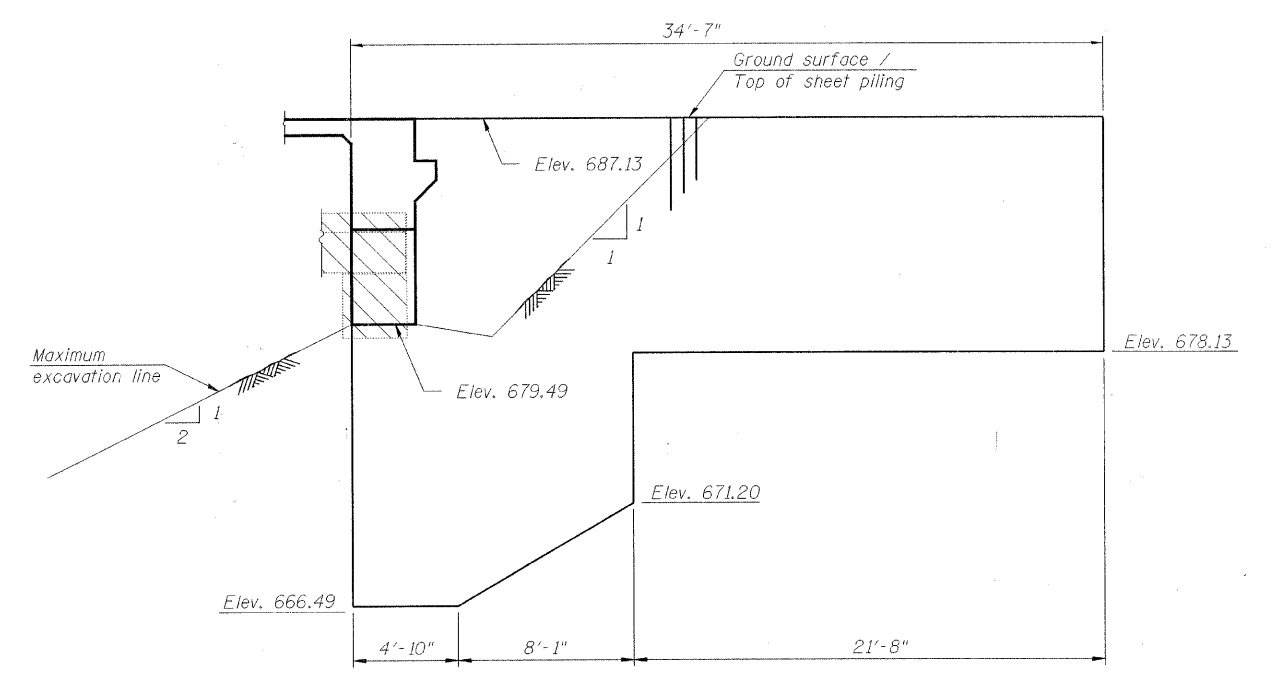
STAGE II REMOVAL



STAGE II CONSTRUCTION



TEMPORARY SHEET PILING
(At West Abutment)



TEMPORARY SHEET PILING
(At East Abutment)

Notes:
Limit of Stage I construction for the Pier is 6" North of ϕ Roadway. See sheet 21 of 25 for details.
All staging cross sections are looking East.
For quantity of Temporary Concrete Barrier, see roadway plans.
If the Contractor chooses to alter the temporary cantilevered sheet piling design requirements shown on the plans, a design submit'al including plan details and calculations will be required for review and acceptance by the Engineer.
Hatched area indicates Removal of Existing Structures.
See sheet 5 of 25 for Temporary Shoring Plan and Details.

DESIGNED	J.ZUO
CHECKED	J. MUHAMMAD
DRAWN	D.C.PATEL
CHECKED	J.GRAINAWI

STAGE CONSTRUCTION DETAILS
F.A.P. RT. 345 - SEC. 98-00153-02-BR
DU PAGE COUNTY
STATION 107+17.50
STRUCTURE NO. 022-3011



G:\16835 Thomdale PhaseII\Struct\Cadd\Pre\final\0223011-00153-003.dgn 04-SEP-2008 11:17