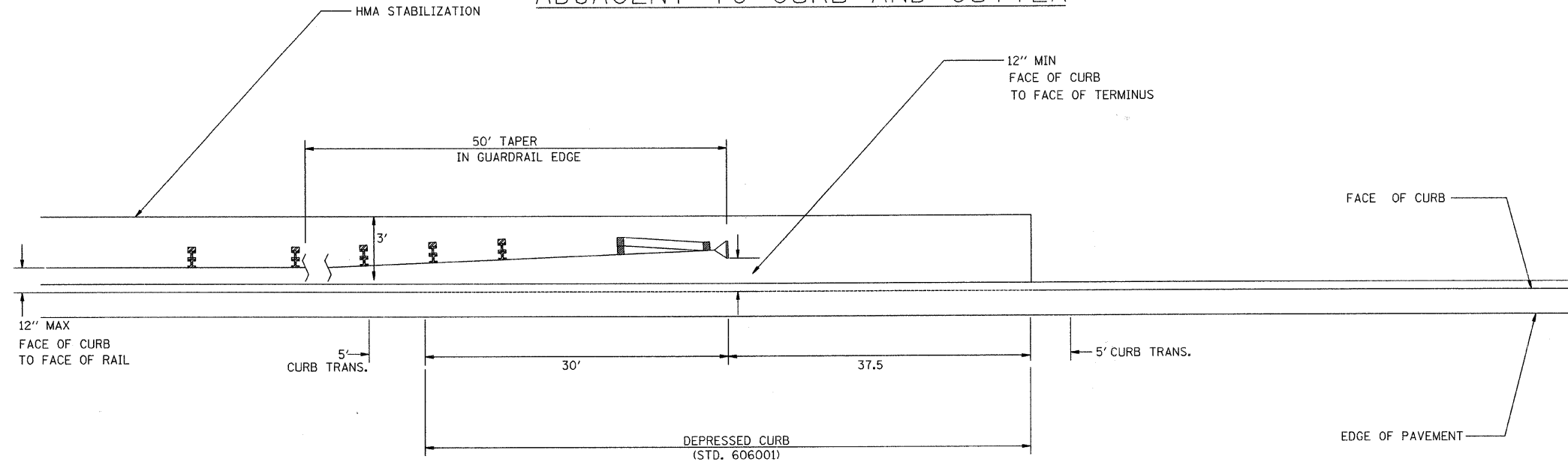


F.A. RTE.	SECTION	COUNTY	TOTAL SHEETS	SHEET NO.
345	98-00153-02-BR	DUPAGE	65	30
STA. 101+25.00		TO STA. 114+00.00		
FED. ROAD DIST. NO. 1		ILLINOIS FED. AID PROJECT		

CONTRACT NO. 63077

TRAFFIC BARRIER TERMINAL TYPE 1 SPECIAL ADJACENT TO CURB AND GUTTER

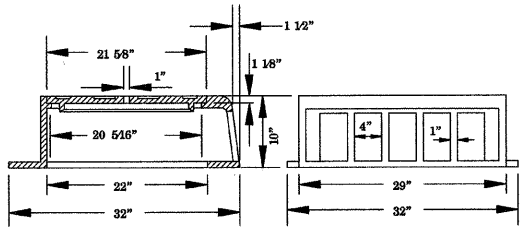
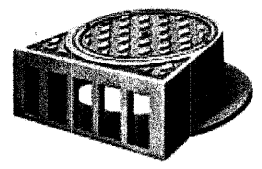


SAG FRAME & LID

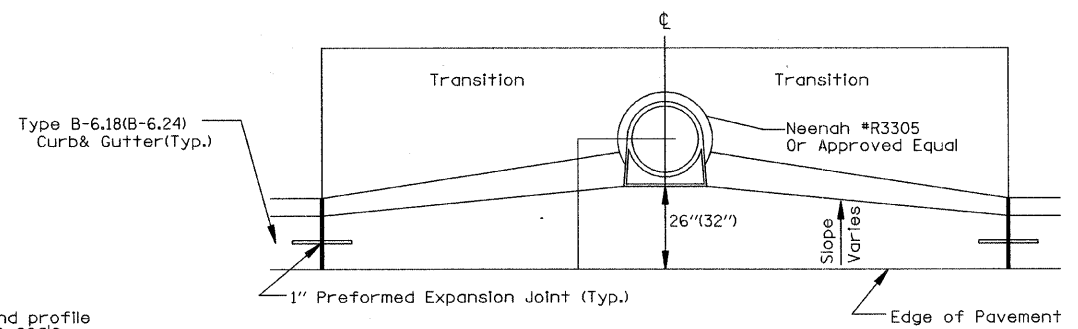
Sag Frame and Lid shall be Neenah Foundry Company #R-3305 or equal.

R-3305 Catch Basin Frame and Lid

For behind-the-curb construction.
Heavy-Duty
Total weight 937 Kilograms (425 lbs.)



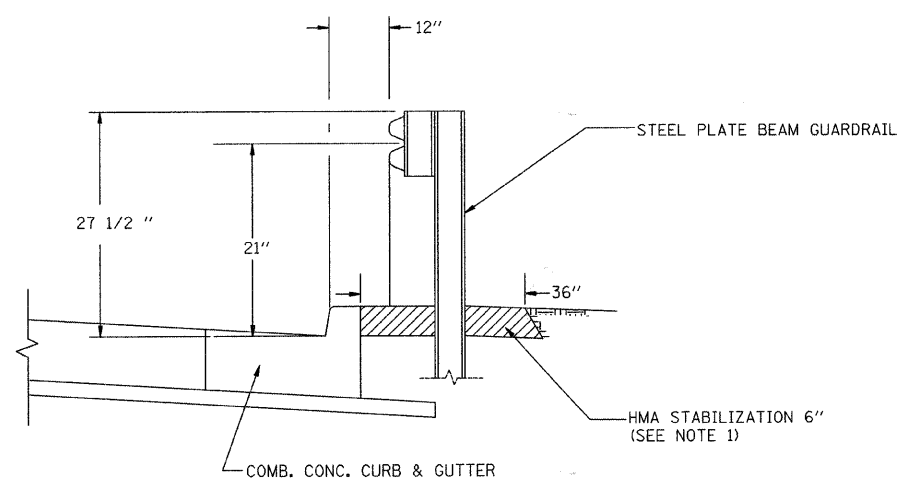
PLAN VIEW



PROFILE VIEW

Note: Plan and profile not to scale

DETAILS FOR STEEL PLATE BEAM GUARDRAIL ADJACENT TO CURB AND GUTTER



NOTES:

1. THE HMA STABILIZATION SHALL EXTEND UNDER THE TRAFFIC BARRIER TERMINAL.
2. GUARDRAIL MAY BE PLACED AT THE BACK OF CURB WHEN DIRECTED BY THE ENGINEER.

BASIS OF PAYMENT:

HMA STABILIZATION 6\"/>

STEEL PLATE BEAM GUARDRAIL AND TRAFFIC BARRIER TERMINAL, OF THE TYPE SPECIFIED WILL BE PAID FOR SEPARATELY.

REVISIONS	
NAME	DATE

DUPAGE COUNTY DIVISION OF TRANSPORTATION
THORNDALE AVENUE OVER SALT CREEK

CONSTRUCTION DETAILS

SCALE: NTS
DATE 09-05-08

DRAWN BY MS
CHECKED BY RH



DATE	
BY	
SURVEYED	
ALIGNED	
CHECKED	
PLANNED	
NO.	

DATE	
BY	
SURVEYED	
GRADES CHECKED	
REMARKS	
NO.	

PLOT DATE = 9/4/2008
FILE NAME = #FILE#
PLOT SCALE = #SCALE#
USER NAME = #USER#

\$\$\$G\$\$\$
\$\$\$P\$\$\$