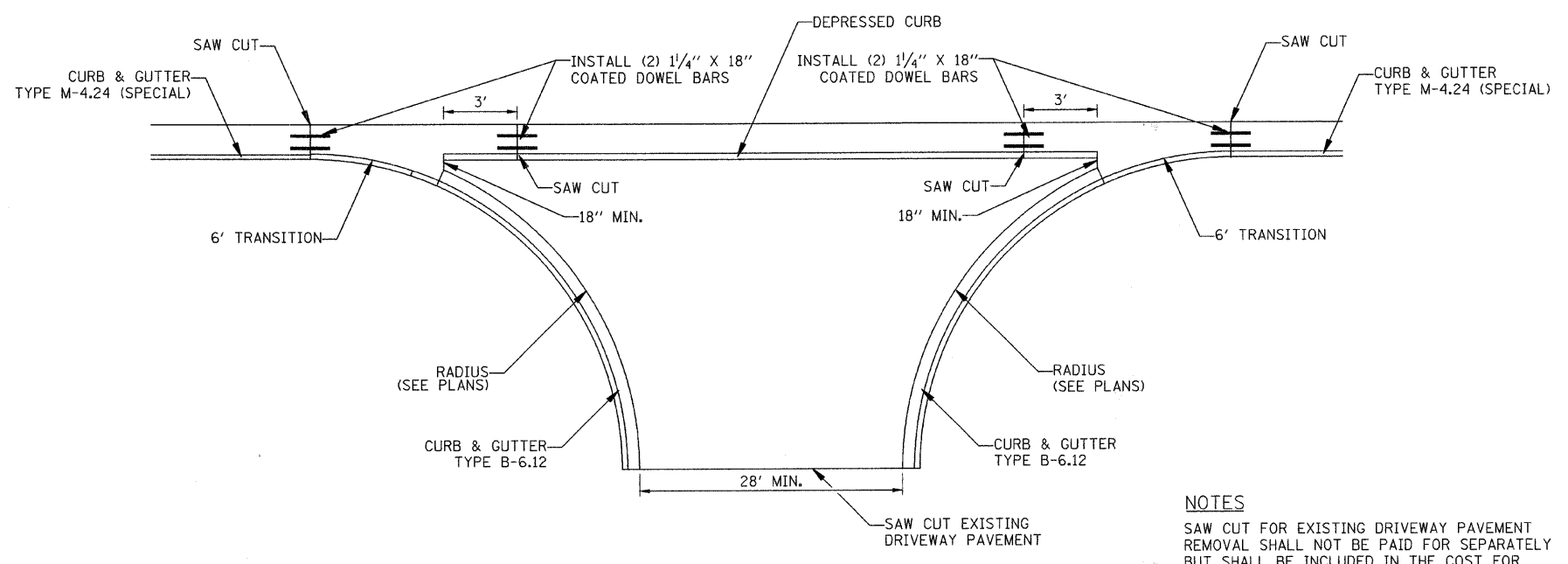


F.A. RTE.	SECTION	COUNTY	TOTAL SHEETS	SHEET NO.
345	98-00153-02-BR	DUPAGE	65	29
STA. 101+25.00		TO STA. 114+00.00		
FED. ROAD DIST. NO. 1		ILLINOIS	FED. AID PROJECT	

CONTRACT NO. 63077

### TYPICAL COMMERCIAL ENTRANCE WITH CURB/GUTTER FLAG STANDARD



### PCC DRIVEWAY

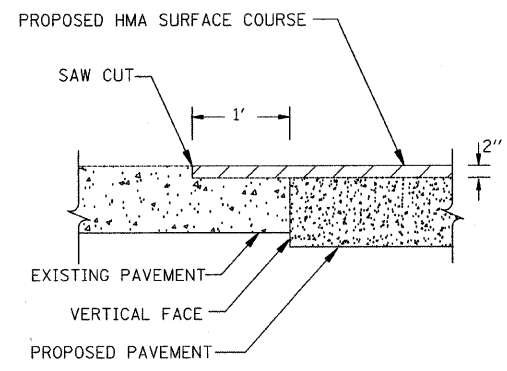
8" PCC DRIVEWAY PAVEMENT  
6" AGGREGATE BASE COURSE, TYPE B

**NOTES**  
SAW CUT FOR EXISTING DRIVEWAY PAVEMENT REMOVAL SHALL NOT BE PAID FOR SEPARATELY BUT SHALL BE INCLUDED IN THE COST FOR PCC DRIVEWAY PAVEMENT.

DATE	BY
PLAN	NO.
NO.	

DATE	BY
PROFILE	NO.
NO.	

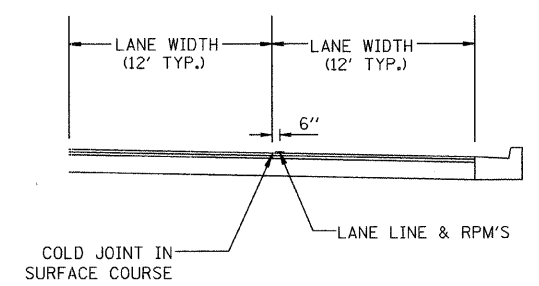
### BUTT JOINT DETAILS



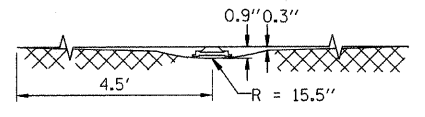
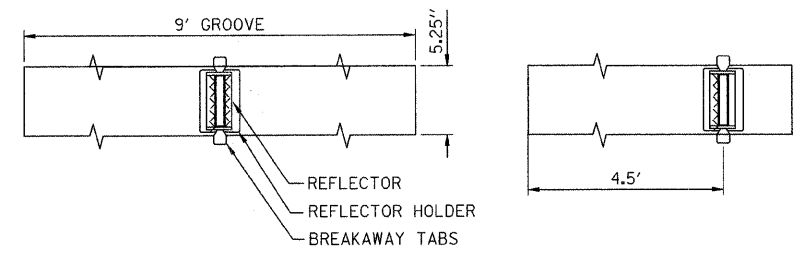
### TYPE B

**NOTES**  
SAW CUT SHALL NOT BE PAID FOR SEPARATELY BUT SHALL BE INCLUDED IN THE COST FOR HMA SURFACE REMOVAL OR PAVEMENT REMOVAL

### PAVEMENT MARKING LOCATION



### TYPICAL RECESSED REFLECTIVE PAVEMENT MARKERS



**NOTES:**  
1. SAW CUT TO DIMENSIONS SHOWN.  
2. SAW CUT AREAS ARE TO BE DRY AND FREE OF MATERIAL  
3. THAT ADVERSELY AFFECTS THE ADHESIVE BOND.  
4. INSTALL THE REFLECTOR WITH AN APPROVED TWO-COMPONENT EPOXY ADHESIVE. EPOXY SHOULD NOT OBSCURE OR BLOCK THE LENS. REFLECTOR SHALL BE 3M SERIES 190 OR APPROVED EQUIVALENT.

### ONE-WAY & TWO-WAY

REVISIONS	
NAME	DATE

DUPAGE COUNTY DIVISION OF TRANSPORTATION  
THORNDALE AVENUE OVER SALT CREEK

### CONSTRUCTION DETAILS

SCALE: NTS  
DATE: 09-05-08  
DRAWN BY: RH  
CHECKED BY: AP



PLOT DATE = 9/4/2008  
FILE NAME = #FILE#  
PLOT SCALE = #SCALE#  
USER NAME = #USER#

\$\$\$DGN\$\$  
\$\$\$PRF\$\$\$