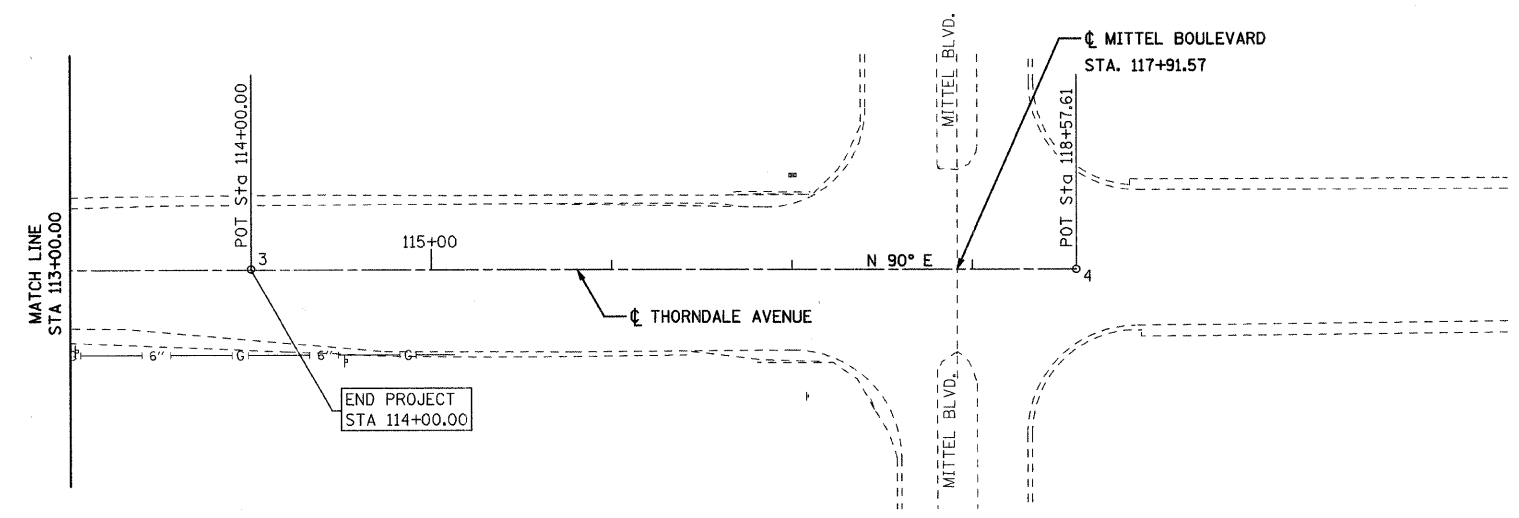
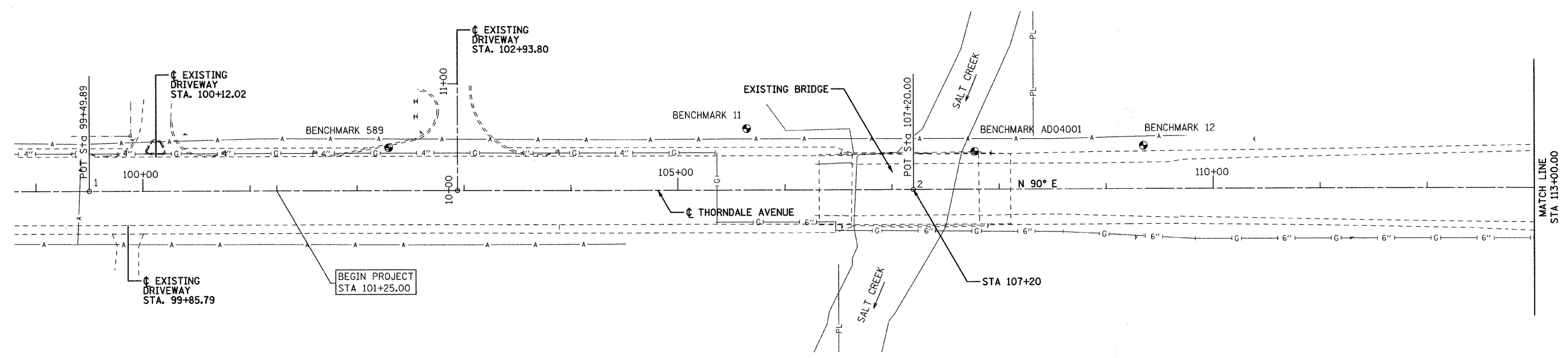




PLAN	SURVEYED	DATE
NOTE BOOK	ALIGNED	BY
NO.	CHECKED	
	OF	
	PLANS	
	FILE NAME	

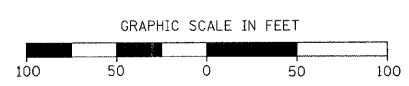
PROFILE	SURVEYED	DATE
NOTE BOOK	GRADES CHECKED	BY
NO.	BY	
	NOTED	
	STRUCTURE	
	NOTATION	



THORNDALE CENTERLINE TIES				
1	POT	STA. 99+49.89	N 10029.800	E 9949.890
2	POT	STA. 107+20.00	N 10029.800	E 10720.010
3	POT	STA. 114+00.00	N 10029.800	E 11400.000
4	POT	STA. 118+57.61	N 10029.800	E 11857.610

BENCHMARK INFORMATION	
BENCHMARK 589	"X" CUT IN DRIVEWAY CURB ON W. SIDE OF THE ENTRANCE IMMEDIATELY W. OF SALT CREEK ON THE N. SIDE OF THORNDALE AVE., ELEV. 682.70'.
BENCHMARK 11	TOP OPERATING BOLT OF FIRE HYDRANT ON N. SIDE OF THORNDALE AVE. AND W. OF SALT CREEK, ELEV. 681.09'.
BENCHMARK AD04001	BRONZE DISK LOCATED IN CONCRETE HEADWALL ON NORTHEAST CORNER OF BRIDGE OVER SALT CREEK ON THORNDALE AVE., ELEV. 683.51'.
BENCHMARK 12	"X" CUT ON RIM OF TELECOMMUNICATION MANHOLE COVER ON N. SIDE OF THORNDALE AVE. 200' E. OF SALT CREEK, ELEV. 681.98'.

NOTE: FOR TIES SEE NEXT SHEET



REVISIONS	
NAME	DATE

DUPAGE COUNTY DIVISION OF TRANSPORTATION
 THORNDALE AVENUE OVER SALT CREEK

ALIGNMENT, TIES
 AND BENCHMARKS

SCALE: 1" = 50'
 DATE 09-05-08

DRAWN BY RH
 CHECKED BY AP

PLOT DATE = 9/4/2008
 FILE NAME = #FILE#
 PLOT SCALE = #SCALE#
 USER NAME = #USER#

\$\$\$DGN\$\$\$
 \$\$\$PRF\$\$\$