

STATE OF ILLINOIS
DEPARTMENT OF TRANSPORTATION
DIVISION OF HIGHWAYS
PROPOSED HIGHWAY PLANS

FOR INDEX OF SHEETS, SEE SHEET NO. 2

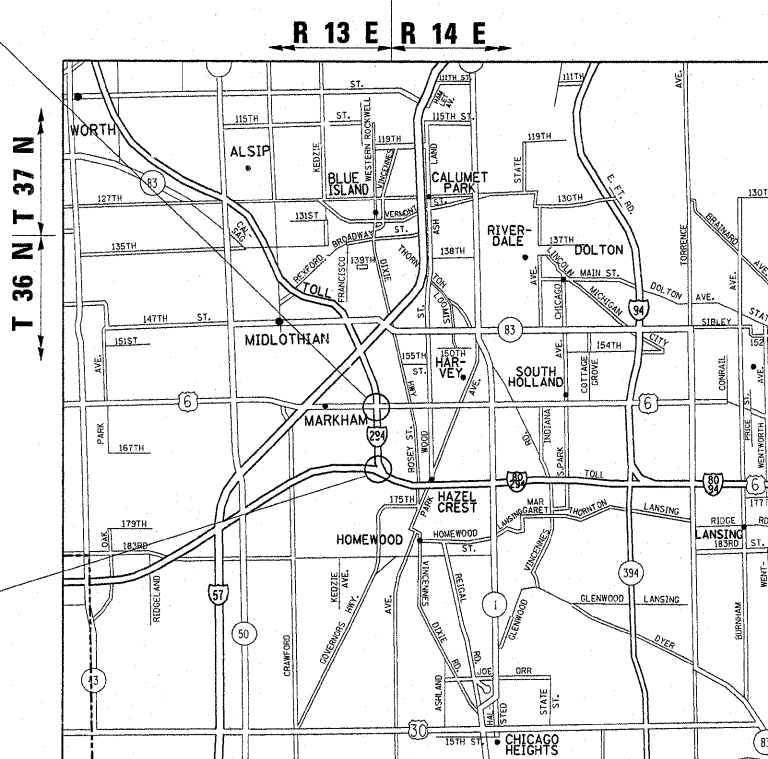
THE PROJECT IS LOCATED IN THE VILLAGE OF HAZEL CREST AND CITY OF MARKHAM

**LOC. 1) FAP ROUTE 351: US 6 (159TH ST.)
 OVER I-294 (TRI-STATE TOLL)
 BRIDGE DECK & JOINT REPAIRS**
**LOC. 2) FAI 80 (I-80)
 AT I-80 EB RAMP TO I-294 NB
 SUBSTRUCTURE REPAIRS**
**SECTION: 2008-067 BR
 COOK COUNTY
 C-91-131-09**

NOTE: WHEREVER IN THESE PLANS
 "FAI 351 & FAI 294" IS REFERENCED
 IT SHALL MEAN "FAI 351 & FAI 80"

LOCATION OF IMPROVEMENT
 LOC. 1: SN 016-0383

LOCATION OF IMPROVEMENT
 LOC. 2: SN 016-2132



BREMEN TOWNSHIP

J.U.L.I.E.
 JOINT UTILITY LOCATION INFORMATION FOR EXCAVATION
 1-800-892-0123
 OR 811

PROJECT ENGINEER ROBERT BORO (847) 705-4178
PROJECT MANAGER KEN ENG

CONTRACT NO. 60F56

F.A. RTE.	SECTION	COUNTY	TOTAL SHEETS	SHEET NO.
*	2008-067 BR	COOK	10	1
FED. ROAD DIST. NO.	ILLINOIS	CONTRACT NO.	60F56	

* FAP 351 & FAI 80

D-91-131-09

10
+1
11



LOCATION OF SECTION INDICATED THUS: - [black rectangle] -

TRAFFIC DATA

US 6
 2007 ADT = 40100
 POSTED SPEED LIMIT = 45 MPH
 I-80
 2006 ADT = 101100
 POSTED SPEED LIMIT = 55 MPH
 I-294 (TRI STATE TOLL)
 2006 ADT = 83,000
 POSTED SPEED LIMIT = 55 MPH
 I-80 TO I-294 NB RAMP
 2006 ADT = 5800
 POSTED SPEED LIMIT = 25 MPH

STATE OF ILLINOIS
DEPARTMENT OF TRANSPORTATION
DIVISION OF HIGHWAYS

SUBMITTED October 27, 2008

Diann M. O'Keefe
 DEPUTY DIRECTOR OF HIGHWAYS, REGION ENGINEER

December 5, 2008
Eric E. Harms
 ENGINEER OF DESIGN AND ENVIRONMENT

December 5, 2008
Christina M. Reed
 DIRECTOR OF HIGHWAYS, CHIEF ENGINEER

**PRINTED BY THE AUTHORITY
 OF THE STATE OF ILLINOIS**

Rev.

INDEX OF SHEETS

SHEET NO.	DESCRIPTION
1	COVER SHEET
2	INDEX OF SHEETS, STANDARDS AND GENERAL NOTES
3	SUMMARY OF QUANTITIES
4-7	BRIDGE REPAIRS (LOC. 1: SN 016-0383)
8-9	BRIDGE REPAIRS (LOC. 2: SN 016-2132)
9A.	TC - 9 DETAIL
10	TRAFFIC CONTROL FOR SHOULDER CLOSURES AND PARTIAL RAMP CLOSURES (TC-17)

LIST OF STATE STANDARDS

STANDARD NO.	DESCRIPTION
701301-03	LANE CLOSURE 2L,2W SHORT TIME OPERATIONS
701400-03	APPROCH TO LANE CLOSURE FREEWAY/EXPRESSWAY
701401-05	LANE CLOSURE FREEWAY/EXPRESSWAY
701411-05	MULTI-LANE, TRAFFIC CONTROL AT ENTERANCE OR EXIT RAMPS
701426-03	LANE CLOSURE, MULTILANE, INTERMITTENT OR MOVING OPERATION FOR SPEEDS \geq 45 MPH
701446-01	TWO LANE CLOSURE FREEWAY/EXPRESSWAY
701601-06	URBAN LANE CLOSURE, MULTILANE, 1W OR 2W WITH NONTRAVERSABLE
701801-04	LANE CLOSURE MULTILANE 1W OR 2W CROSSWALK OR SIDEWALK CLOSURE
701901-01	TRAFFIC CONTROL DEVICES

GENERAL NOTES

BEFORE STARTING ANY EXCAVATION, THE CONTRACTOR SHALL CALL "JULIE" AT 800-892-0123 OR 811 FOR FIELD LOCATIONS OF BURIED ELECTRIC, TELEPHONE AND GAS FACILITIES. (48 HOUR NOTIFICATION IS REQUIRED)

THE CONTRACTOR SHALL COORDINATE CONSTRUCTION ACTIVITIES WITH UTILITY COMPANIES, CITY OF MARKHAM AND VILLAGE OF HAZEL CREST.

THE CONTRACTOR WILL NOT BE ALLOWED TO SET UP A YARD OR FIELD OFFICE ON STATE OR TOLLWAY PROPERTY WITHOUT WRITTEN PERMISSION FROM THE DEPARTMENT OR ISTHA.

THE CONTRACTOR SHALL CONTACT THE DISTRICT ONE TRAFFIC CONTROL SUPERVISOR AT 847-705-4151 FOR ARTERIALS AND ISTHA DAILY TRAFFIC AUTHORIZATION AT (630) 241-6800 EXT. 3822 FOR TOLLWAYS A MINIMUM OF 72 HOURS IN ADVANCE OF BEGINNING WORK.

THESE PLANS HAVE BEEN PREPARED FROM NOTES RECEIVED FROM BRIDGE INSPECTORS

DO NOT SCALE PLAN FOR CONSTRUCTION DIMENSIONS

THE CONTRACTOR SHALL BE REQUIRED TO PROVIDE ACCESS TO ABUTTING PROPERTY AT ALL TIMES DURING THE CONSTRUCTION OF THIS PROJECT.

WHEN ARTIFICIAL LIGHTING IS UTILIZED IN NIGHT OPERATIONS, THE CONTRACTOR SHALL EXERCISE THE UTMOST PRECAUTIONS IN PREVENTING ADVERSE VISIBILITY TO THE MOTERING PUBLIC AND ADJOINING RESIDENTIAL AREAS.

THE "ADVANCE WARNING SIGN DETAIL FOR ARTERIALS TRAFFIC" LOCATED IN THE SPECIAL PROVISION FOR "TEMPORARY INFORMATION SIGNING FOR LANE CLOSURES" IS APPLICABLE ONLY TO ARTERIAL ROADS AND SHALL NOT BE APPLIED TO TOLLWAYS.

* FAP 351 & FAI 294

FILE NAME = c:\projects\113109\design.ea.dgn	USER NAME = obebawa	DESIGNED -	REVISED -	STATE OF ILLINOIS DEPARTMENT OF TRANSPORTATION	INDEX OF SHEETS, STATE STANDARDS & GENERAL NOTES	F.A. RTE.	SECTION	COUNTY	TOTAL SHEETS	SHEET NO.	
		DRAWN -	REVISED -			*	2008-067 BR	COOK	10	2	
		CHECKED -	REVISED -			CONTRACT NO. 60F56					
		DATE -	REVISED -			FED. ROAD DIST. NO. ILLINOIS FED. AID PROJECT					
				SCALE:		SHEET NO. OF SHEETS		STA. TO STA.			

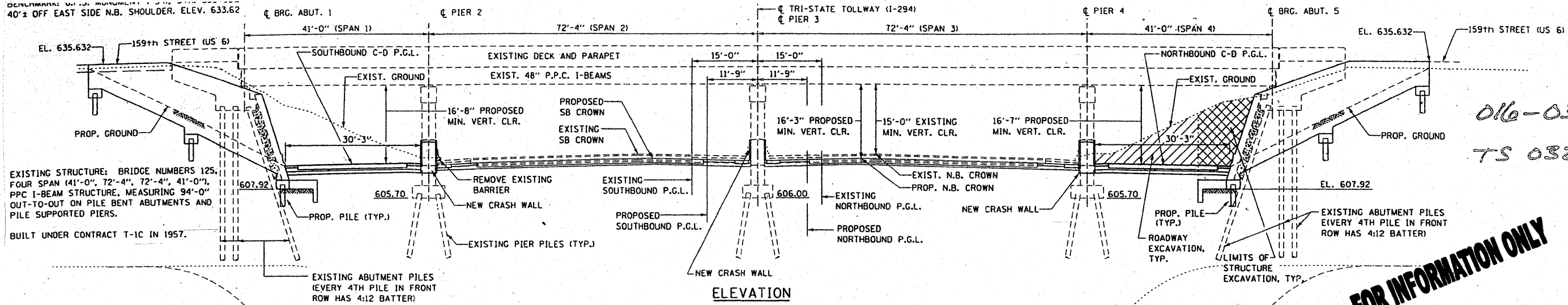
SUMMARY OF QUANTITIES			CONSTRUCTION TYPE CODE					SUMMARY OF QUANTITIES			CONSTRUCTION TYPE CODE								
CODE NO	ITEM	UNIT	TOTAL QUANTITIES	USG URBAN LOC. 1 SN 016-0383 STATE 100% SFTY-2A	I-80 URBAN LOC. 2 SN 016-2122 STATE 100% SFTY-2A					CODE NO	ITEM	UNIT	TOTAL QUANTITIES						
50157300	PROTECTIVE SHIELD	SQ YD	2368	2368															
50300225	CONCRETE STRUCTURES	CU YD	11.1		11.1														
67000400	ENGINEER'S FIELD OFFICE, TYPE A	CAL MO	5	4	1														
67100100	MOBILIZATION	L SUM	1	.7	.3														
70102630	TRAFFIC CONTROL AND PROTECTION, STANDARD 701601	L SUM	1	1															
70102640	TRAFFIC CONTROL AND PROTECTION, STANDARD 701801	L SUM	1	1															
X0320887	POLYMER CONCRETE	CU FT	0.9	0.9															
X0322467	TEMPORARY INFORMATION SIGNING FOR LANE CLOSURE	SQ FT	48	48															
X0323076	SILICONE JOINT SEALER, 1 3/4"	FOOT	94	94															
X0323077	SILICONE JOINT SEALER, 2 3/4"	FOOT	188	188															
X0325305	STRUCTURAL REPAIR OF CONCRETE (DEPTH EQUAL TO OR LESS THAN 6 INCHES)	CU FT	338		338														
X7011015	TRAFFIC CONTROL AND PROTECTION (EXPRESSWAYS)	L SUM	1	0.7	0.3														
Z0016002	DECK SLAB REPAIR (FULL DEPTH, TYPE II)	SQ YD	21	21															
Z0016200	DECK SLAB REPAIR (PARTIAL)	SQ YD	217	217															
Z0073300	TEMPORARY SHORING AND CRIBBING	L SUM	1		1														
50102400	CONCRETE REMOVAL	CU YD	11		11														
X0321781	MECHANICAL SPLICE	EACH	20		20														
50800205	REINFORCEMENT BARS, EPOXY COATED	POUND	3420		3420														
70300240	TEMPORARY PAVEMENT MARKING - LINE 6"	FOOT	125		125														
70400100	TEMPORARY CONCRETE BARRIER	FOOT	125		125														
Z0030150	IMPACT ATTENUATORS (NON-REDIRECTIVE), TEST LEVEL 3	EACH	1		1														

10/29/2008 10:43:43 AM d:\131088\roadcon.cad.dwg

REVISIONS		ILLINOIS DEPARTMENT OF TRANSPORTATION SUMMARY OF QUANTITIES
NAME	DATE	

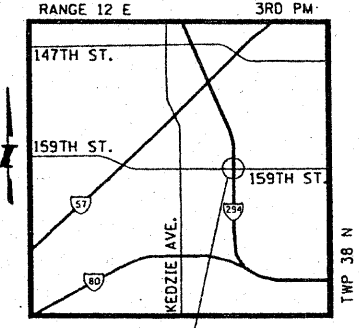
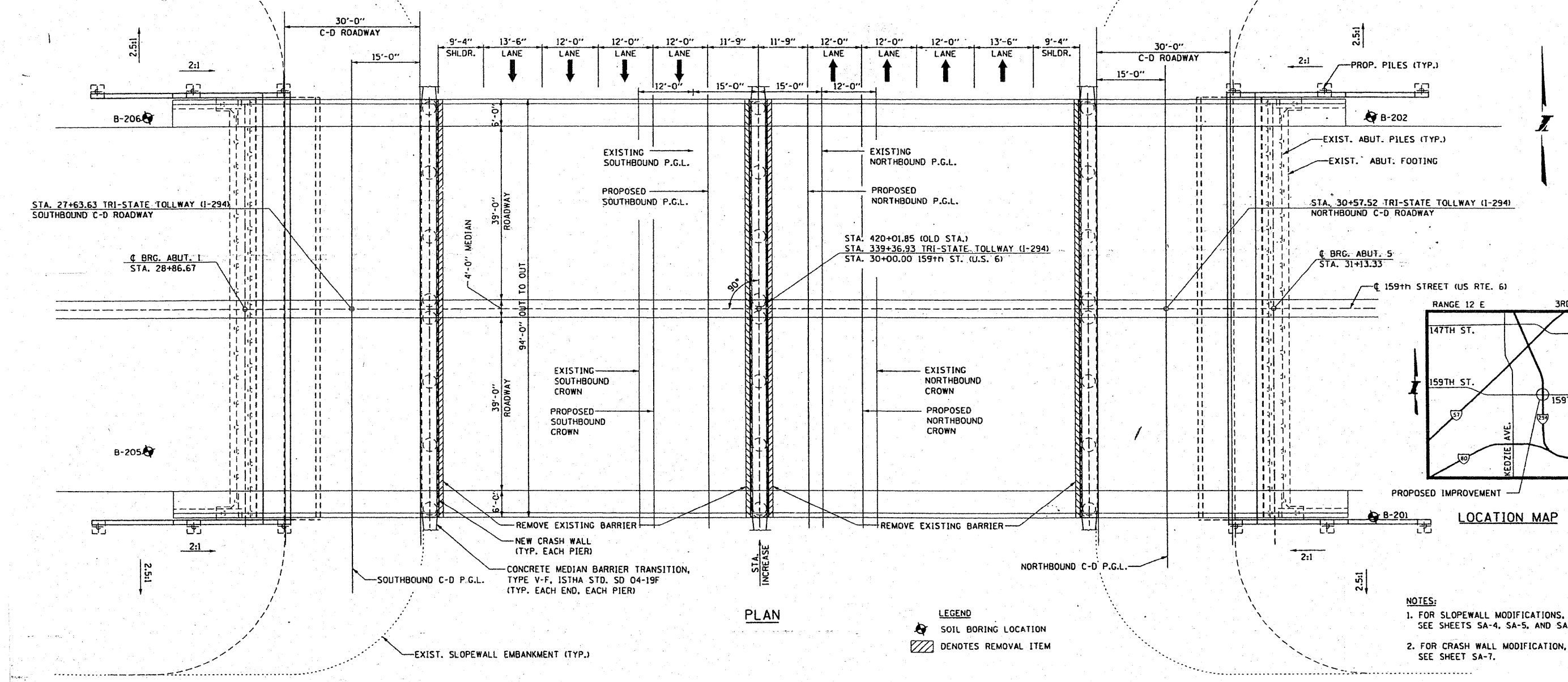
Rev.

40'± OFF EAST SIDE N.B. SHOULDER. ELEV. 633.62



016-0383
TS 032

FOR INFORMATION ONLY



- NOTES:**
1. FOR SLOPEWALL MODIFICATIONS, SEE SHEETS SA-4, SA-5, AND SA-6.
 2. FOR CRASH WALL MODIFICATION, SEE SHEET SA-7.

FILE NAME =
c:\projects\1113109\design\ee.dgn

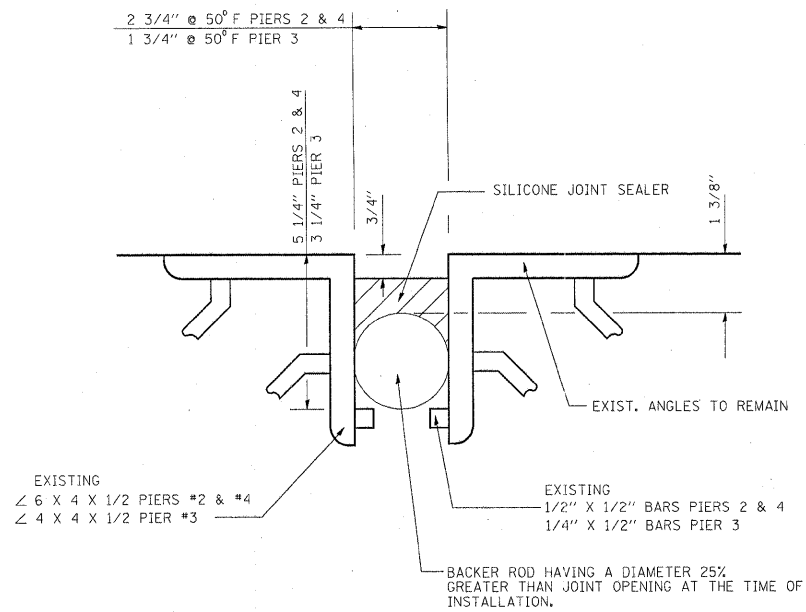
USER NAME = drivakosgn	DESIGNED -	REVISED -
PLOT SCALE = 58.0000' / IN.	DRAWN -	REVISED -
PLOT DATE = 10/21/2008	CHECKED -	REVISED -
	DATE -	REVISED -

**STATE OF ILLINOIS
DEPARTMENT OF TRANSPORTATION**

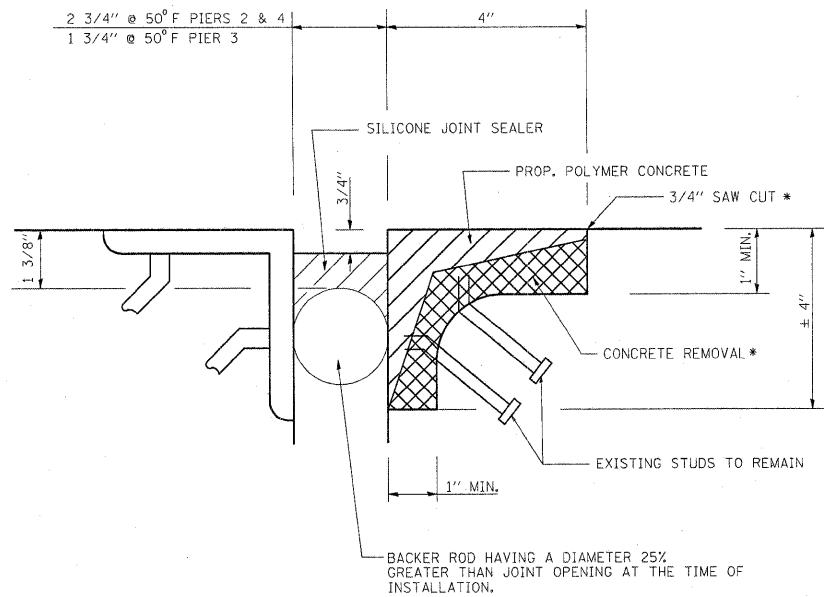
GENERAL PLAN AND ELEVATION OF EXISTING BRIDGE

SCALE: SHEET NO. 1 OF 4 SHEETS STA. TO STA.

F.A.P. RTE.	SECTION	COUNTY	TOTAL SHEETS	SHEET NO.
*	2008-067 BR	COOK	10	4
FED. ROAD DIST. NO. [ILLINOIS] FED. AID PROJECT			CONTRACT NO. 60F56	



SECTION A-A



SECTION B-B

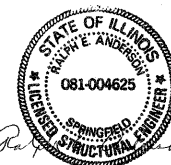
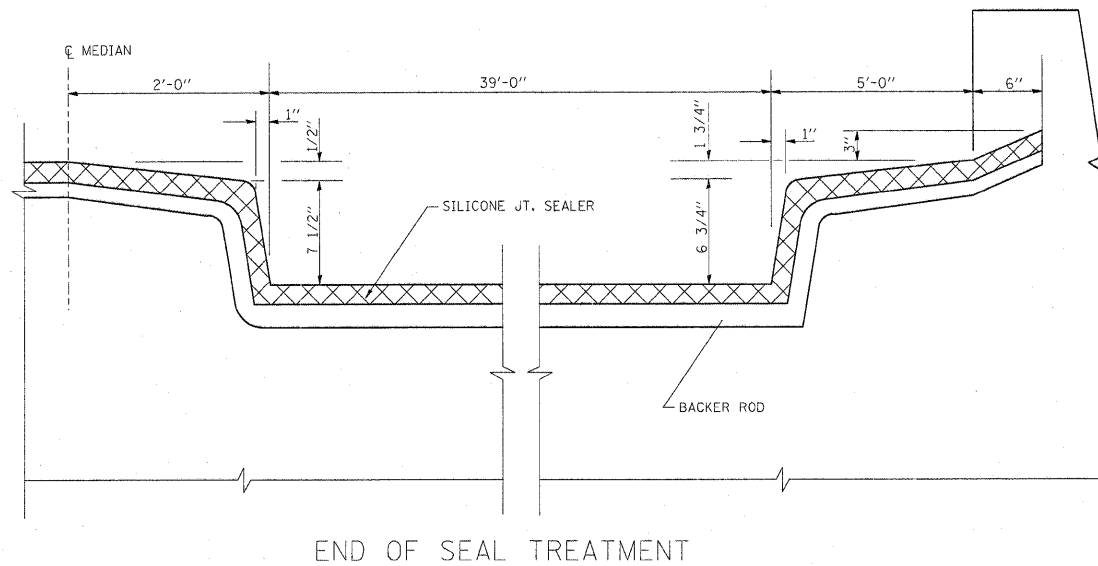
JOINT REPAIR DETAIL

GENERAL NOTES

PLAN DIMENSIONS AND DETAILS RELATIVE TO EXISTING PLANS ARE SUBJECT TO ROUTINE VARIATIONS. THE CONTRACTOR SHALL FIELD VERIFY EXISTING DIMENSIONS AND DETAILS AFFECTING NEW CONSTRUCTION AND MAKE NECESSARY APPROVED ADJUSTMENTS PRIOR TO CONSTRUCTION OR ORDERING OF MATERIALS. SUCH VARIATIONS SHALL NOT BE CAUSE FOR ADDITIONAL COMPENSATION FOR A CHANGE IN SCOPE OF THE WORK, HOWEVER, THE CONTRACTOR WILL BE PAID FOR THE QUANTITY ACTUALLY FURNISHED BASED UPON THE UNIT PRICE BID FOR THE WORK.

* COST OF CONCRETE REMOVAL, SAW CUTS & REMOVAL OF EXISTING PJS (4" PJS PIERS 2 & 4, 2 1/2" PJS PIER 3) IS INCLUDED IN THE COST OF SILICONE JOINT SEALER.

FOR SECTION A-A AND B-B SEE SHEET 3 OF 4



Expires Nov. 30, 2010

TOTAL BILL OF MATERIAL		
DESCRIPTION	UNIT	QUANTITY
POLYMER CONCRETE	CU FT	0.9
PROTECTIVE SHIELD	SQ YD	2368
SILICONE JOINT SEALER, 1 3/4"	FOOT	94
SILICONE JOINT SEALER, 2 3/4"	FOOT	188
DECK SLAB REPAIR (PARTIAL)	SQ YD	217
DECK SLAB REPAIR (FULL DEPTH, TYPE II)	SQ YD	21

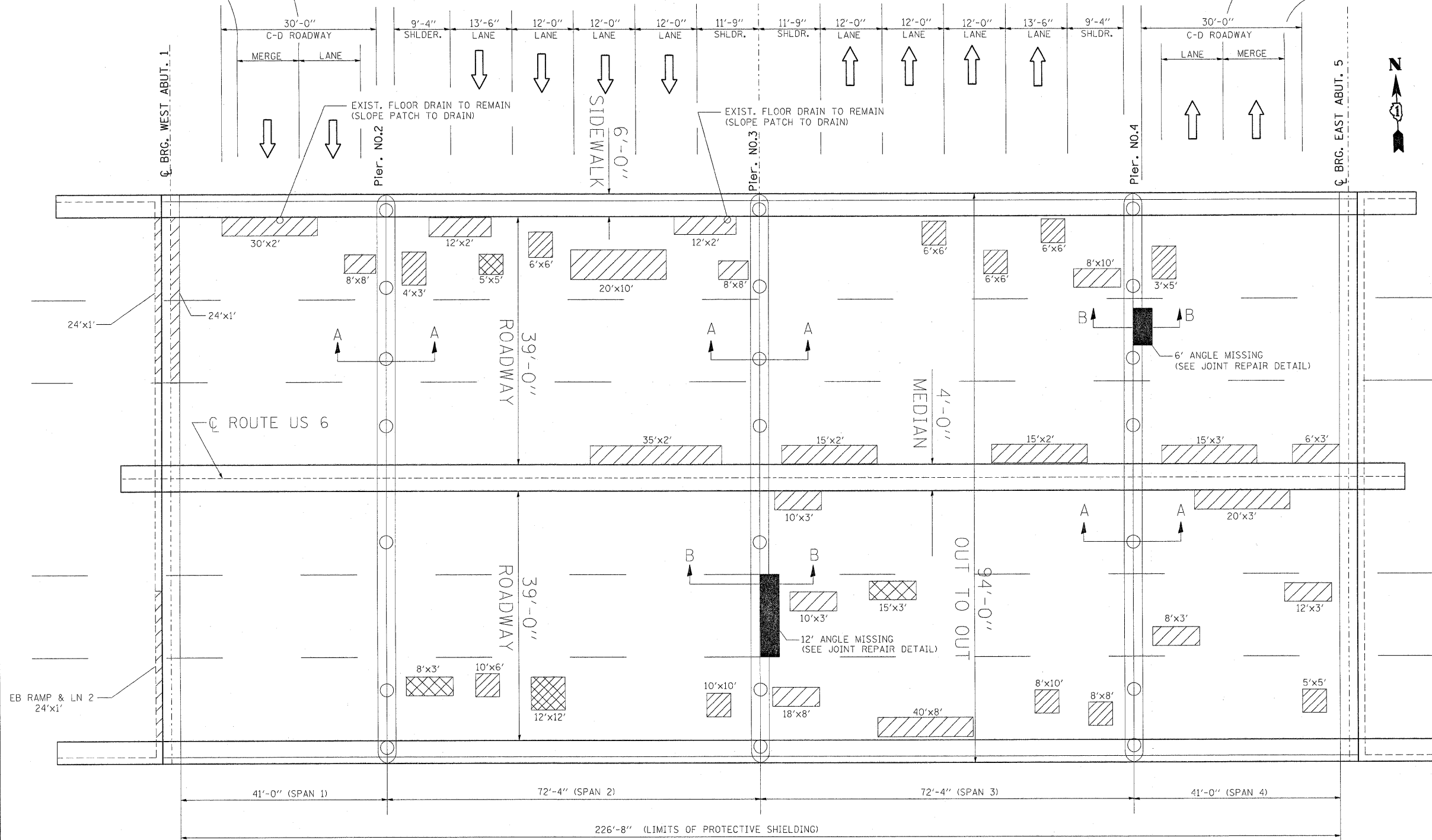
* FAP 351 & FAI 294

US 6
TO
SB I-294
ENTRANCE RAMP

NB I-294
TO US 6
EXIT RAMP

SB I-294

NB I-294



NOTE:

- AREAS OF DECK REPAIRS SHOWN ARE ESTIMATED. THE ENGINEER SHALL SHOW LOCATION OF DECK REPAIRS ON AS-BUILT PLANS
- ONLY CLOSE ONE SIDEWALK AT A TIME
- REMOVE EXISTING PJS JOINTS @ PIERS 2, 3 & 4 AND REPLACE W/SILICONE JOINT SEALER
- FOR SECTION A-A SEE SHEET 2 OF 4
- FOR SECTION B-B SEE SHEET 2 OF 4

PLAN

LEGEND

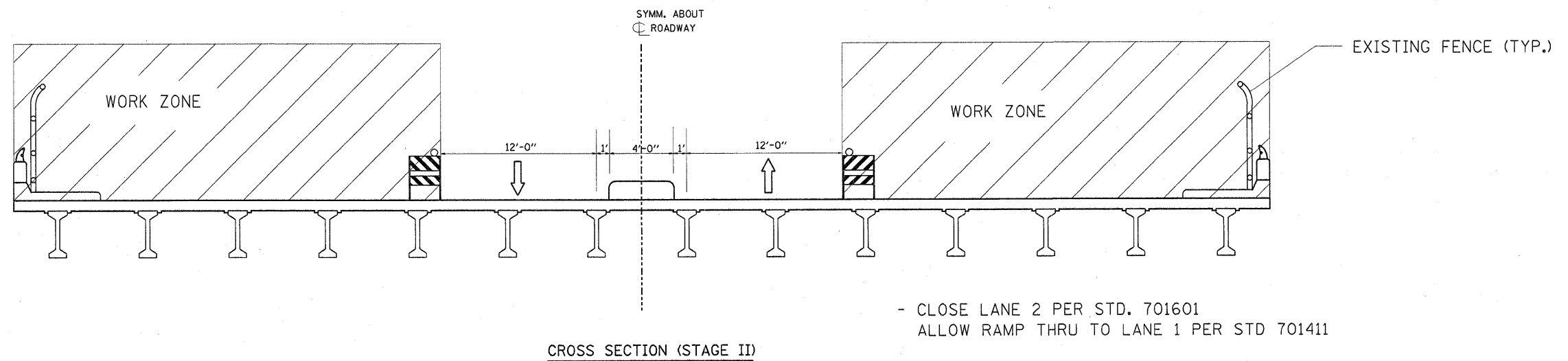
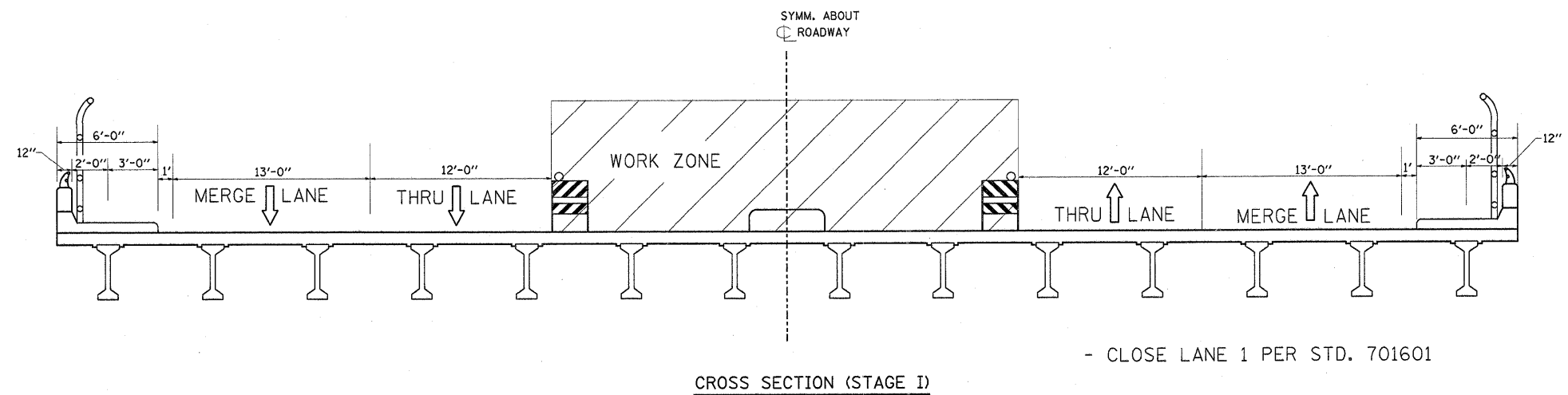
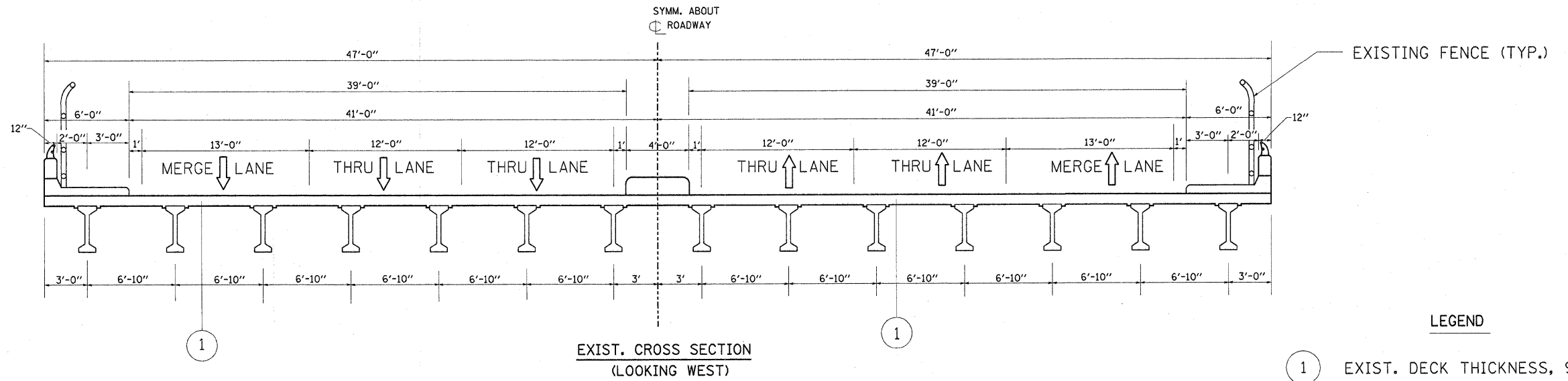
- CONCRETE REMOVAL, POLYMER CONCRETE
- DECK SLAB REPAIR (FULL DEPTH, TYPE II)
- DECK SLAB REPAIR (PARTIAL)

FILE NAME = o:\projects\dl13109\design\aa.dgn	USER NAME = abebawa	DESIGNED -	REVISED -
		DRAWN -	REVISED -
		CHECKED -	REVISED -
		DATE -	REVISED -

STATE OF ILLINOIS
DEPARTMENT OF TRANSPORTATION

LOC. 1: SN 016-0383
DECK SLAB REPAIRS
SCALE: SHEET NO. 3 OF 4 SHEETS STA. TO STA.

*FAP 351 & FAI 294				
F.A. RTE.	SECTION	COUNTY	TOTAL SHEETS	SHEET NO.
*	2008-067 BR	COOK	10	6
FED. ROAD DIST. NO. ILLINOIS FED. AID PROJECT			CONTRACT NO. 60F56	



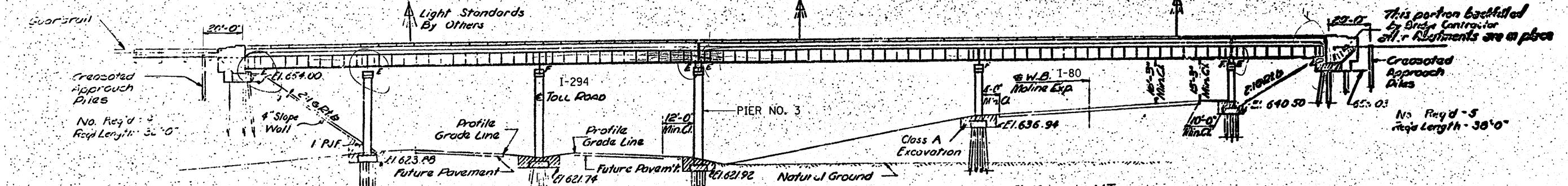
FILE NAME =	USER NAME = abebawa	DESIGNED -	REVISED -	STATE OF ILLINOIS DEPARTMENT OF TRANSPORTATION	LOC 1: SN 016-0383 TRAFFIC STAGING	F.A. RTE.	SECTION	COUNTY	TOTAL SHEETS	SHEET NO.	
c:\projects\dl13109\design.aa.dgn		DRAWN -	REVISED -			*	2008-067 BR	COOK	10	7	
		CHECKED -	REVISED -			CONTRACT NO. 60F56					
		DATE -	REVISED -			ILLINOIS FED. AID PROJECT					
PLOT SCALE = 50.0000' / IN.					SCALE:	SHEET NO. 4 OF 4 SHEETS	STA.	TO STA.			
PLOT DATE = 10/27/2008											

*FAP 351 & FAI 294

E.M. 1153-Top of Brass Plug in Conc. Monument at E of Toll Road at Sta 345+00 - Elev 625.88
 E.M. 1154-Top of Brass Plug in Conc. Monument at E of Toll Road at Sta 365+00 - Elev 622.60
 No Existing Structure

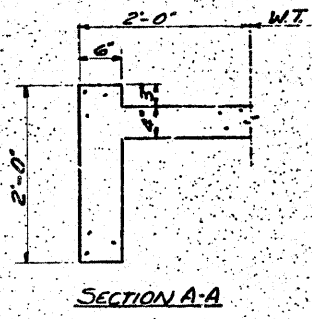
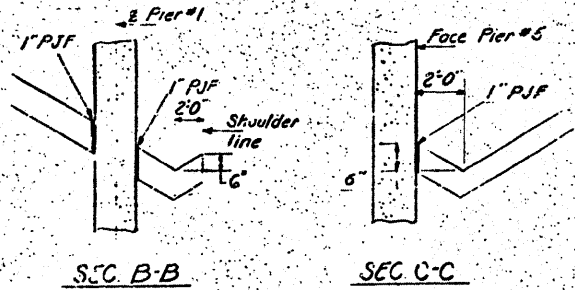
STATE OF ILLINOIS
 DEPARTMENT OF PUBLIC WORKS & BUILDINGS
 DIVISION OF HIGHWAYS

1019	51	11A	37
CONTRACT NO.	SECTION	SHEET NO.	TOTAL SHEETS



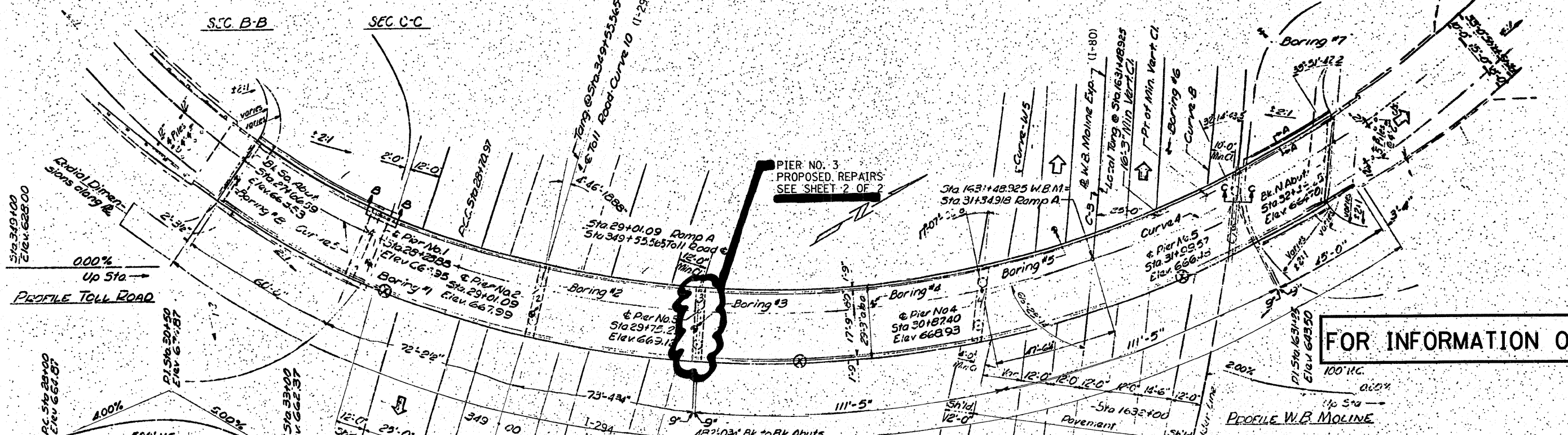
ELEVATION
 All piles shall be
 Steel H Piles
 unless noted.

SYMBOL
 Light Standard
 On Bridge



SEE SHEET NO. 10 FOR NAME PLATE DETAILS

NAME PLATE
 See Std. 2113-7



FOR INFORMATION ONLY

DESIGNED	EXAMINED
CHECKED	PASSED
DRAWN	APPROVED
IN CHARGE	

Time 1 1966
 CURVE 10
 $\Delta = 57^{\circ} 03'$
 $D = 200.00'$
 $R = 286.73'$
 $T = 237.230'$
 $L = 4507.90'$
 $SE = 0.04\%$

CURVE 3
 $D = 3^{\circ} 30' 00''$
 $\Delta = 3^{\circ} 30' 00''$
 $L_s = 200.00'$
 $L_c = 907.209'$
 $\Delta_c = 31^{\circ} 45' 08.31''$
 $\Delta = 35^{\circ} 15' 04.32''$
 $P = 1.00'$
 $K = 99.958'$
 $X = 199.926'$
 $Y = 4.072'$
 $TIM(n) = 521.8771'$
 $T(SUM) = 618.6673'$
 $R = 1637.0223'$
 $SE = 0.06\%$

CURVE 4
 $\Delta = 59^{\circ} 30' 00''$
 $D = 13^{\circ} 28' 53''$
 $R = 425.00'$
 $T = 242.908'$
 $L = 441.35'$
 $E = 64.52'$

CURVE 5
 $\Delta = 59^{\circ} 30' 00''$
 $D = 18^{\circ} 28' 57''$
 $R = 310.00'$
 $T = 177.18'$
 $L = 321.93'$
 $E = 47.06'$

DESIGN STRESSES:
 $f_c = 1400$ psi Super.
 $f_c = 1400$ psi Sub.
 $f_s = 20,000$ psi Reinf.
 $f_s = 20,000$ psi Super. A-36
 $f_t = 75$ psi Ftgs.
 $n = 10$
 $f_s = 25,000$ psi Super. A-44 Proposed

	RISE	RISE
24	19	
25'-117.9'	30	

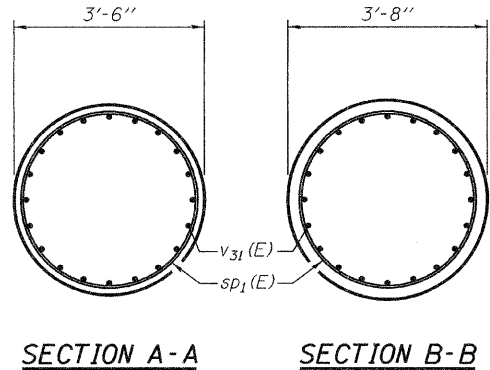
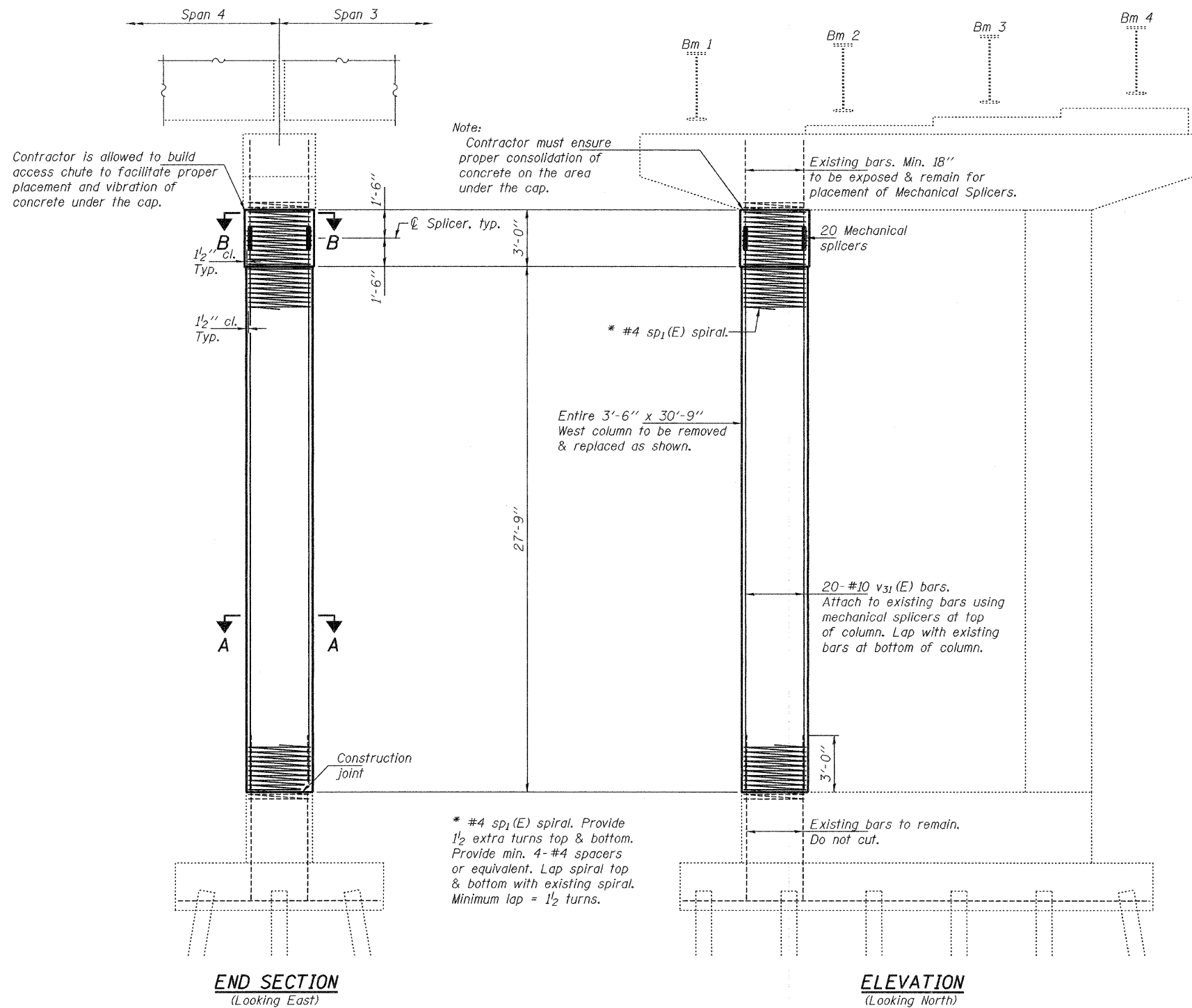
LOADING: HS20-44 & ALT.

LOCATION SKETCH

AS REVISED
 RAMP A - MOLINE EXPRESSWAY AND
 TOLL ROAD INTERCHANGE OVER
 TOLL ROAD AND W.B. MOLINE
 F.A.I. ROUTE 80
 SECTION 1818-809HB
 COOK COUNTY
 STATION 31+34.918 RAMP A

* FAP 351 & FAI 294

STATE OF ILLINOIS
DEPARTMENT OF TRANSPORTATION



Note A:
 No spacers in this area (top & bottom), to allow for compression of spiral for placement, lapping and mechanically splicing existing vertical bars as shown. After installation of vertical bars, spiral is to be expanded and lapped with the existing spiral maintaining the proper pitch.

REACTIONS (Girder loads only)			
		Span 3	Span 4
R _ℓ	(k)	29.2	44.6
R _{sℓ}	(k)	12.1	17.1
R _ℓ	(k)	43.0	45.6
R _r	(k)	10.7	9.6
R _{Total}	(k)	95.0	116.9

GENERAL NOTES

Reinforcement bars shall conform to the requirements of ASTM A 706 Gr 60. See Special Provisions.
 Reinforcement bars designated (E) shall be epoxy coated.
 Plan dimensions and details relative to existing plans are subject to nominal construction variations. The Contractor shall field verify existing dimensions and details affecting new construction and make necessary approved adjustments prior to construction or ordering of materials. Such variations shall not be cause for additional compensation for a change in scope of the work, however, the Contractor will be paid for the quantity actually furnished at the unit price bid for the work.
 Existing reinforcement bars extending into the removal area shall be cleaned, straightened and incorporated into the new construction. Any reinforcement bars that are damaged during concrete removal shall be replaced with an approved bar splicer or anchorage system. Cost included with Concrete Removal.
 The Contractor must submit a procedure for installation of the spiral and vertical bars for approval prior to any installation of the reinforcement. Temporary shoring and cribbing, as described in the Special Provisions, is to be installed prior to any concrete removal.
 If existing #10 vertical bars or spiral extending into removal area to be reused are found to have a cross sectional area loss greater than 10% the contractor shall notify the Bureau of Bridges and Structures for further disposition before installation of the new reinforcement.

TOTAL BILL OF MATERIAL

Bar	No.	Size	Length	Shape
** sp ₁ (E)	1	#4	30'-9"	
v ₃₁ (E)	20	#10	29'-2"	—
Concrete Removal		Cu. Yd.	11.0	
Concrete Structures		Cu. Yd.	11.1	
Mechanical Splicers		Each	20	
*** Reinforcement Bars, Epoxy Coated		Pound	3420	
Temporary Shoring and Cribbing		L. Sum	1	

** Length is height of spiral
 *** Includes weight of spiral & spacers

**PIER 3 REPAIRS
 FAI 80 EB RAMP TO FAI 294
 SN 016-2132**

DESIGNED *Victor H. Valiz*
 CHECKED *Dominic Baliva*
 DRAWN *baliva*
 CHECKED *VHV DAB*

DECEMBER 4, 2008
 EXAMINED *[Signature]*
 PASSED *[Signature]*
 ENGINEER OF STRUCTURAL SERVICES
 ENGINEER OF BRIDGES AND STRUCTURES

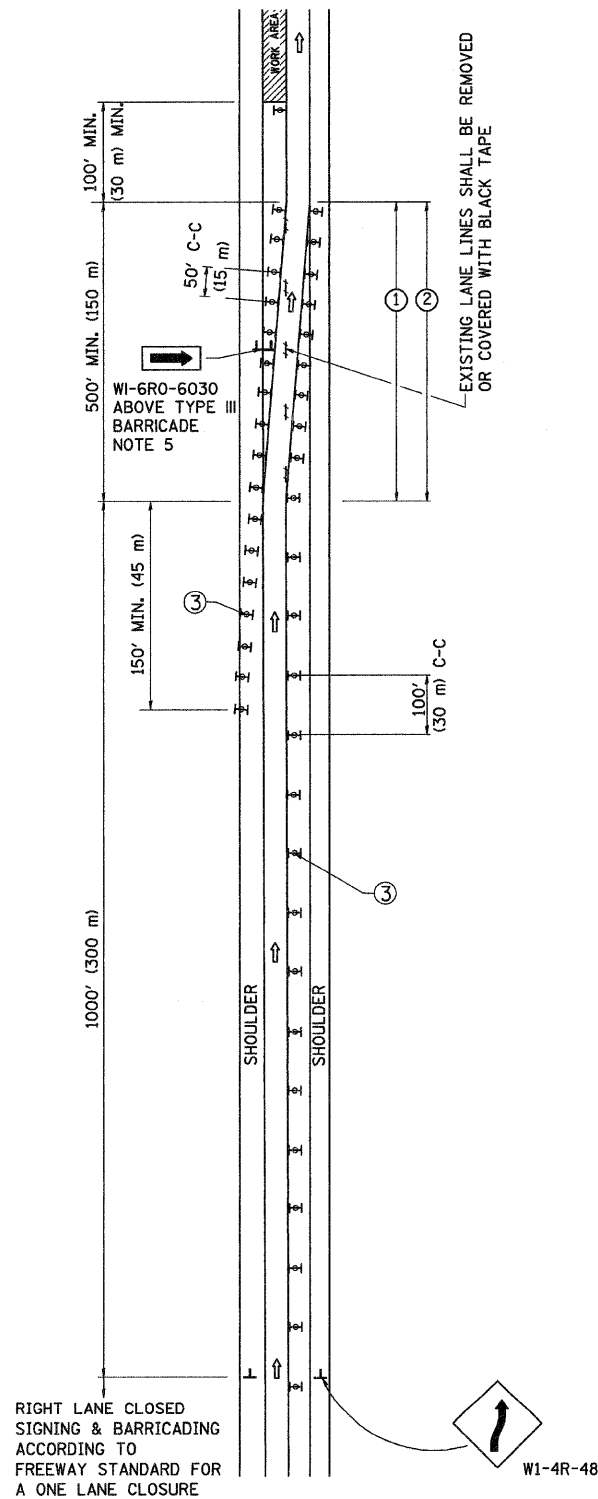


EXPIRES 11-30-2010

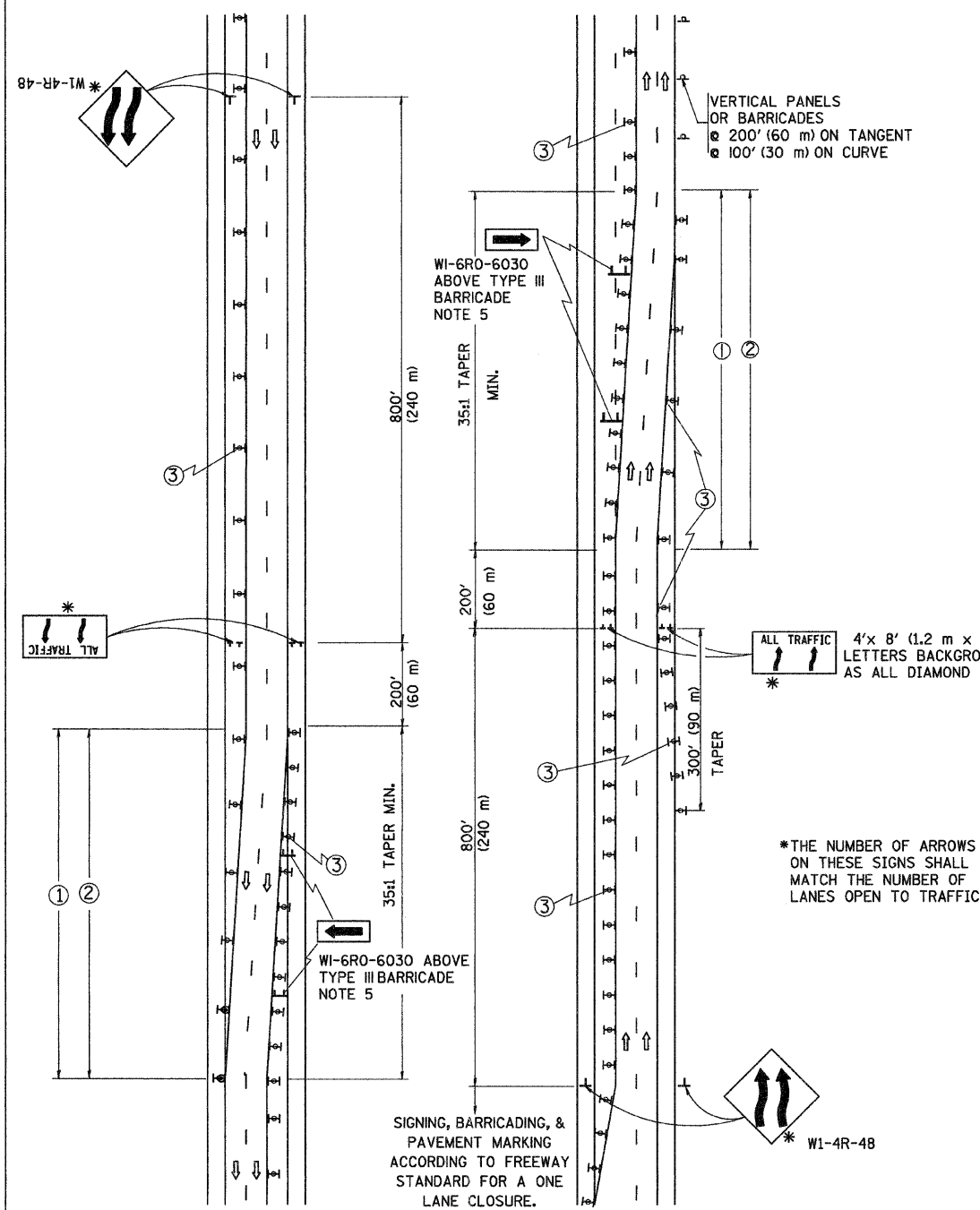
SHEET NO. 2 2 SHEETS	F.A. RTE.	SECTION	COUNTY	TOTAL SHEETS	SHEET NO.
	*	2008-067 BR	COOK	10	9
FED. ROAD DIST. NO.			ILLINOIS	FED. AID PROJECT	
CONTRACT NO. 60F56					

* FAP 351 & FAI 294

SINGLE LANE WEAVE



MULTI-LANE WEAVE



GENERAL NOTES

- EXISTING CONFLICTING PAVEMENT MARKING LINES SHALL BE REMOVED OR COVERED WITH BLACK TAPE. PAVEMENT MARKING REMOVAL OR BLACK TAPE SHALL NOT BE REQUIRED FOR LANE CLOSURES UNDER 24 HOURS IN DURATION.
- CONTINUOUS REFLECTIVE TEMPORARY PAVEMENT MARKING TAPE SHALL BE PLACED THROUGHOUT THE TAPER AND FOR 300' (90 m) ALONG SIDE THE WORK AREA WHERE THE CLOSURE TIME IS GREATER THAN FOURTEEN DAYS. THE LEFT EDGE LINE SHALL BE YELLOW AND THE RIGHT EDGE LINE SHALL BE WHITE. FOR MULTI-LANE WEAVE LANE LINES SHALL BE 10'-30' (3 m-9 m) SKIP DASH, WHITE.
- PLASTIC DRUMS WITH STEADY BURN LIGHTS AT 50' (15 m) C-C SPACING IN TAPERS AND 100' (30 m) C-C SPACING IN TANGENTS.
- ALL SIGNS SHALL BE POST MOUNTED IF THE CLOSURE TIME EXCEEDS FOUR DAYS.
- IF A TYPE III BARRICADE WITH AN ATTACHED SIGN PANEL WHICH MEETS NCHRP 350 IS NOT AVAILABLE, THE SIGNS MAY BE MOUNTED ON NCHRP 350 TEMPORARY SIGN SUPPORTS DIRECTLY IN FRONT OF THE BARRICADE.
- IF THE WIDTH OF OFFSET IS LESS THAN 6' THEN THE TYPE III BARRICADE WITH ATTACHED ARROW SIGN PANEL CAN BE ELIMINATED IN THE TAPER AREAS.

SYMBOLS

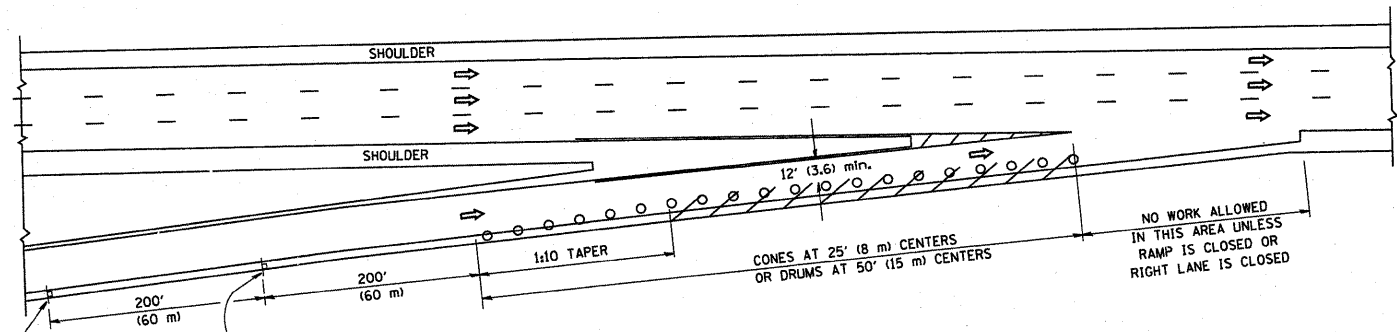
- ↑ DIRECTION OF TRAFFIC
- ▨ WORK AREA
- ┆ SIGN ON PORTABLE OR PERMANENT SUPPORT
- ⊞ TYPE II BARRICADE, DRUM OR VERTICAL BARRICADE WITH MONO-DIRECTIONAL STEADY BURNING LIGHT

* FAP 351 & FAI 80

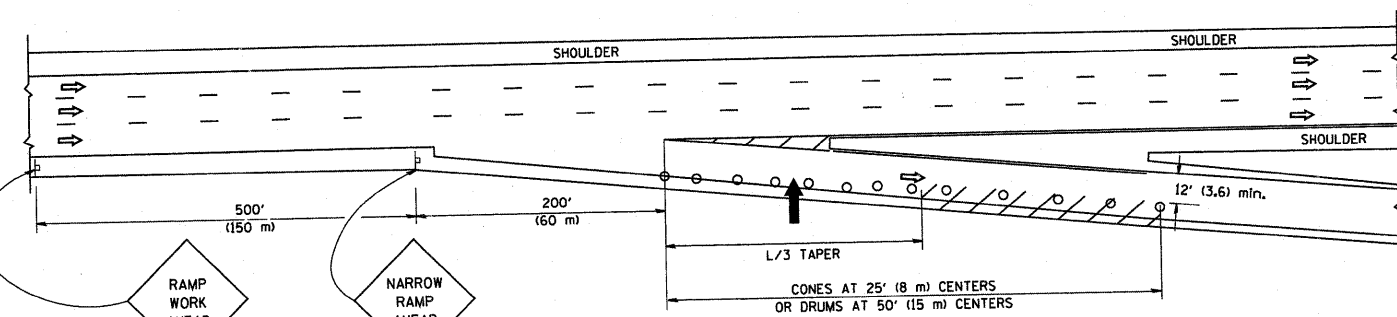
ALL DIMENSIONS ARE IN INCHES (MILLIMETERS) UNLESS OTHERWISE SHOWN

FILE NAME = W:\dstat2\22x34\to89.dgn	USER NAME = gaglianob	DESIGNED - DWS	REVISED - DWS 11-96	STATE OF ILLINOIS DEPARTMENT OF TRANSPORTATION	TRAFFIC CONTROL DETAILS FOR FREEWAY SINGLE & MULTI-LANE WEAVE		F.A. RTE. *	SECTION	COUNTY	TOTAL SHEETS	SHEET NO.	
		DRAWN -	REVISED - JAF 01-03		SCALE: NONE	SHEET NO. 1 OF 1 SHEETS	STA.	TO STA.	* 200B-067 BR	COOK	10	9A
		PLOT SCALE = 50,000' / IN.	REVISED - JAF 02-06						TC-09			
		PLOT DATE = 1/4/2008	REVISED - SPB 01-07						FED. ROAD DIST. NO. 1	ILLINOIS	FED. AID PROJECT	CONTRACT NO. 60F56

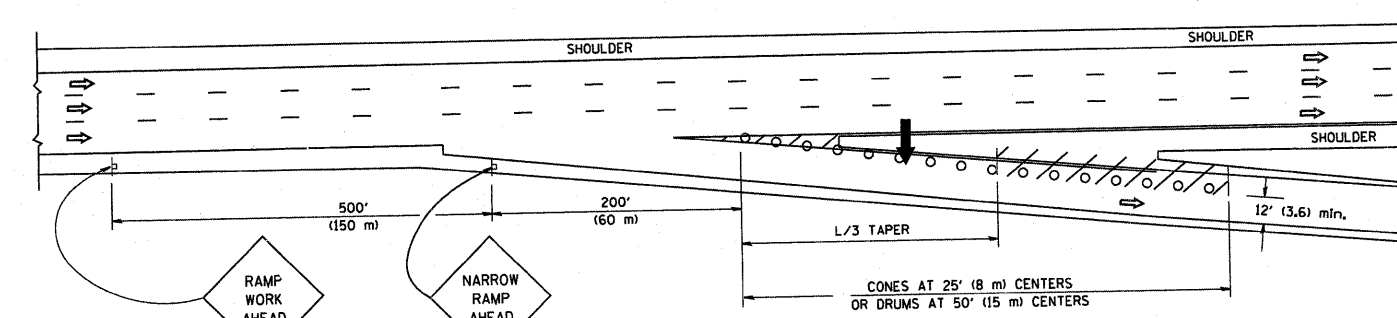
PARTIAL RAMP CLOSURE DETAILS



TYPICAL ENTRANCE RAMP



TYPICAL EXIT RAMP



TYPICAL EXIT RAMP

SYMBOLS

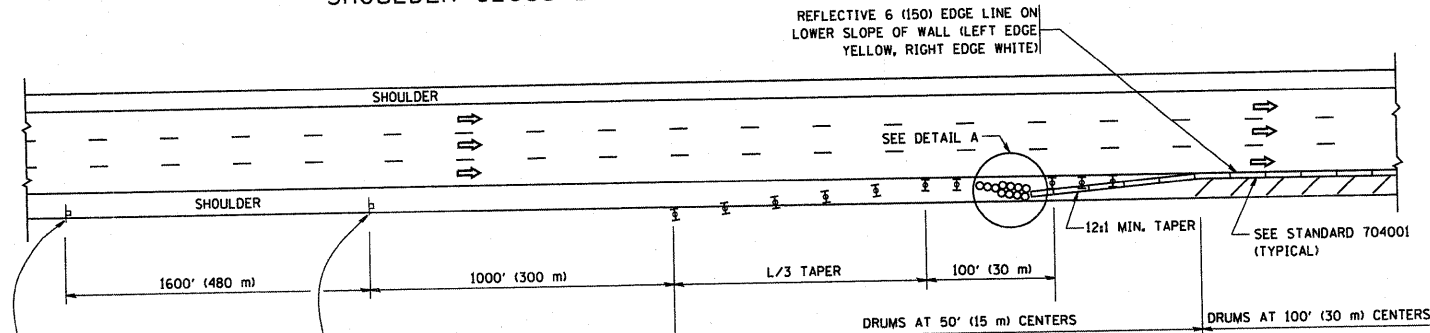
- ARRJWBOARD
- WORK AREA
- SIGN ON PORTABLE OR PERMANENT SUPPORT
- FLAGGER WITH CONTROL SIGN
- TYPE II BARRICADE, DRUM OR VERTICAL BARRICADE WITH STEADY BURN MONO-DIRECTIONAL LIGHT
- CONE, DRUM OR BARRICADE

GENERAL NOTES

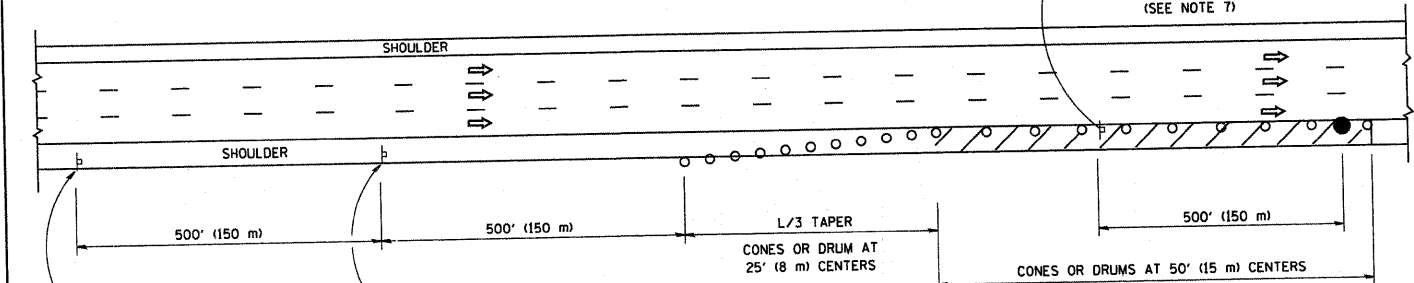
1. THE "L" DISTANCE EQUALS:

SPEED LIMIT	FORMULAS
45 mph (80 km/h) OR GREATER:	METRIC ENGLISH L=0.65(W)(S) L=(W)(S)
W = WIDTH OF OFFSET IN FEET (METERS)	
S = NORMAL POSTED SPEED MPH (KM/H)	
2. PLASTIC DRUMS WITH HIGH PERFORMANCE REFLECTIVE SHEETING AND STEADY BURNING LIGHTS ARE REQUIRED FOR ALL NIGHTTIME CLOSURES.
3. ALL SIGNS SHALL BE POST MOUNTED IF THE CLOSURE TIME EXCEEDS FOUR DAYS.
4. FLASHING LIGHTS SHALL BE USED DURING THE HOURS OF DARKNESS AND SHALL BE INSTALLED ABOVE THE FIRST TWO SETS OF SIGNS.

SHOULDER CLOSURE DETAILS

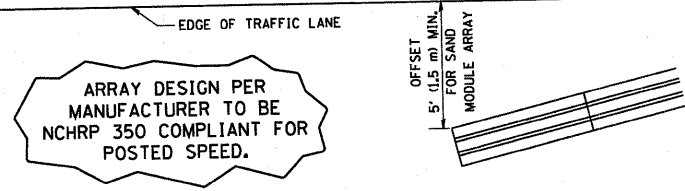


PERMANENT SHOULDER CLOSURE



DAYTIME SHOULDER CLOSURE

THIS DETAIL IS USED WHERE:
1. VEHICLES, EQUIPMENT, WORKERS OR THEIR ACTIVITIES ENCR OACH IN AN AREA CLOSER THAN 15' (4.5 m) TO THE EDGE OF PAVEMENT FOR A PERIOD IN EXCESS OF 15 MINUTES.



DETAIL "A"
IMPACT ATTENUATOR, TEMPORARY
(SEE NOTE 5)

ALL DIMENSIONS ARE IN INCHES (MILLIMETERS) UNLESS OTHERWISE SHOWN.

FILE NAME = W:\dststd\22x34\17.dgn

USER NAME = gaglianobt
PLOT SCALE = 50.0000' / IN.
PLOT DATE = 1/4/2008

DESIGNED -
DRAWN - D.W.S.
CHECKED -
DATE - 11-96

REVISED - J.A.F. 12-02
REVISED - 04-03
REVISED - J.A.F. 12-06
REVISED - S.P.B. 01-07

STATE OF ILLINOIS
DEPARTMENT OF TRANSPORTATION

TRAFFIC CONTROL DETAILS FOR FREEWAY
SHOULDER CLOSURES AND PARTIAL RAMP CLOSURES

SCALE: NONE SHEET NO. 1 OF 1 SHEETS STA. TO STA.

F.A. RTE.	SECTION	COUNTY	TOTAL SHEETS	SHEET NO.
* 2008-067 BR		COOK	10	10
TC-17			CONTRACT NO.	
* FAP 351 + FAI 294				
FED. ROAD DIST. NO. 1 ILLINOIS FED. AID PROJECT				