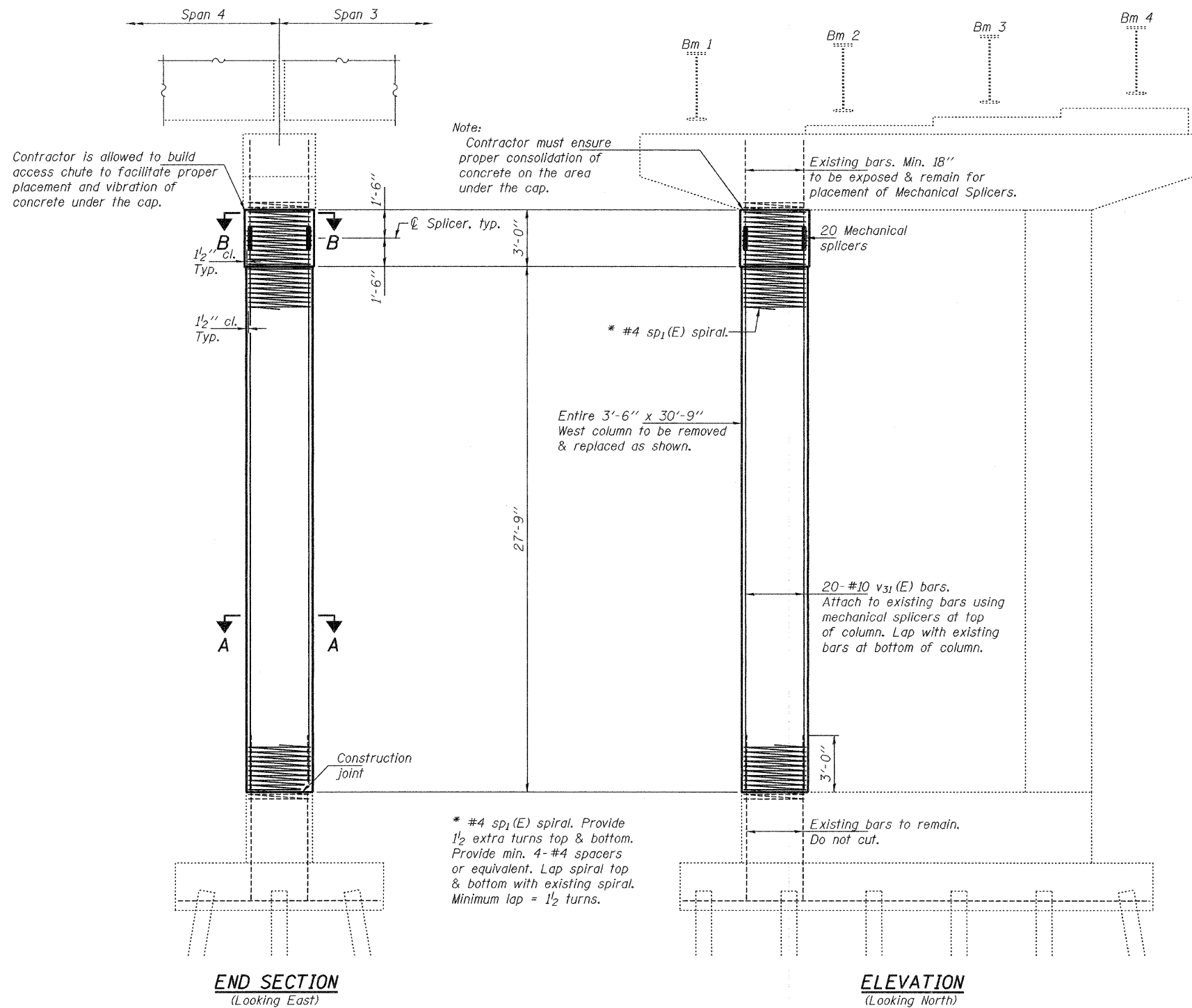


STATE OF ILLINOIS
DEPARTMENT OF TRANSPORTATION



GENERAL NOTES

Reinforcement bars shall conform to the requirements of ASTM A 706 Gr 60. See Special Provisions.
 Reinforcement bars designated (E) shall be epoxy coated.
 Plan dimensions and details relative to existing plans are subject to nominal construction variations. The Contractor shall field verify existing dimensions and details affecting new construction and make necessary approved adjustments prior to construction or ordering of materials. Such variations shall not be cause for additional compensation for a change in scope of the work, however, the Contractor will be paid for the quantity actually furnished at the unit price bid for the work.
 Existing reinforcement bars extending into the removal area shall be cleaned, straightened and incorporated into the new construction. Any reinforcement bars that are damaged during concrete removal shall be replaced with an approved bar splicer or anchorage system. Cost included with Concrete Removal.
 The Contractor must submit a procedure for installation of the spiral and vertical bars for approval prior to any installation of the reinforcement. Temporary shoring and cribbing, as described in the Special Provisions, is to be installed prior to any concrete removal.
 If existing #10 vertical bars or spiral extending into removal area to be reused are found to have a cross sectional area loss greater than 10% the contractor shall notify the Bureau of Bridges and Structures for further disposition before installation of the new reinforcement.

REACTIONS (Girder loads only)			
		Span 3	Span 4
R _ℓ	(k)	29.2	44.6
R _{sℓ}	(k)	12.1	17.1
R _ℓ	(k)	43.0	45.6
R _r	(k)	10.7	9.6
R _{Total}	(k)	95.0	116.9

TOTAL BILL OF MATERIAL

Bar	No.	Size	Length	Shape
** sp ₁ (E)	1	#4	30'-9"	
v ₃₁ (E)	20	#10	29'-2"	—
Concrete Removal			Cu. Yd.	11.0
Concrete Structures			Cu. Yd.	11.1
Mechanical Splicers			Each	20
*** Reinforcement Bars, Epoxy Coated			Pound	3420
Temporary Shoring and Cribbing			L. Sum	1

** Length is height of spiral
 *** Includes weight of spiral & spacers

**PIER 3 REPAIRS
FAI 80 EB RAMP TO FAI 294
SN 016-2132**

DESIGNED *Victor H. Valiz*
 CHECKED *Dominic Baliva*
 DRAWN *baliva*
 CHECKED *VHV DAB*

DECEMBER 4, 2008
 EXAMINED *[Signature]*
 PASSED *[Signature]*
 ENGINEER OF STRUCTURAL SERVICES
 ENGINEER OF BRIDGES AND STRUCTURES



EXPIRES 11-30-2010

SHEET NO. 2	F.A. RTE.	SECTION	COUNTY	TOTAL SHEETS	SHEET NO.
2 SHEETS	*	2008-067 BR	COOK	10	9
			CONTRACT NO. 60F56		
FED. ROAD DIST. NO.		ILLINOIS	FED. AID PROJECT		

* FAP 351 & FAI 294