

PROJECT ENGINEER ROBERT BORO (847) 705-4178  
PROJECT MANAGER KEN ENG

FOR INDEX OF SHEETS SEE SHEET 2

STATE OF ILLINOIS  
DEPARTMENT OF TRANSPORTATION  
DIVISION OF HIGHWAYS  
DISTRICT ONE  
**PROPOSED HIGHWAY PLANS**

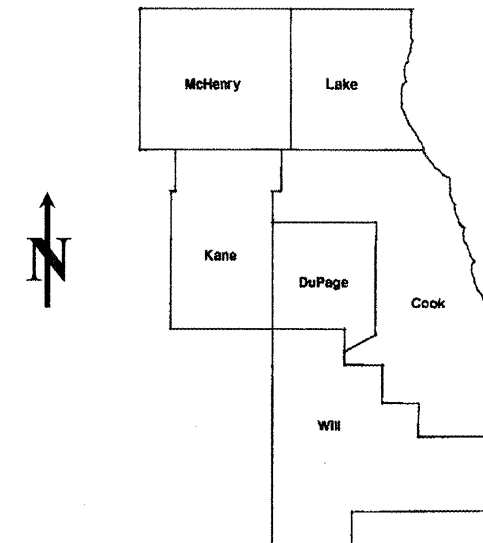
VARIOUS ROUTES  
VARIOUS LOCATIONS  
SECTION 2008-038 I  
CONCRETE BARRIER WALL AND  
BRIDGE PARAPET REPAIRS  
VARIOUS COUNTIES  
C-91-525-08

IMPROVEMENTS ARE LOCATED IN THE  
CITIES OF CHICAGO AND CRYSTAL LAKE  
AND IN THE VILLAGES OF PEOTONE,  
ITASCA, WILLOWBROOK AND HILLSIDE.

ROUTE	SECTION	COUNTY	TOTAL SHEETS	SHEET NUMBER
VARIOUS	2008-038 I	VARIOUS	20	1

CONTRACT NO. 60E79

D-91-525-08



STATE OF ILLINOIS  
DEPARTMENT OF TRANSPORTATION  
DIVISION OF HIGHWAYS

SUBMITTED: OCTOBER 30, 2008

Diane M. O'Keefe DEPUTY DIRECTOR OF HIGHWAYS, REGION ENGINEER

December 5, 2008  
Eric E. Harn INTERIM ENGINEER OF DESIGN AND ENVIRONMENT

December 5, 2008  
Christine M. Reed DIRECTOR OF HIGHWAYS, CHIEF ENGINEER

PRINTED BY THE AUTHORITY  
OF THE STATE OF ILLINOIS

J.U.L.I.E.: JOINT UTILITY LOCATION  
INFORMATION FOR EXCAVATION  
(800) 892-0123 OR 811

C.U.A.N  
CHICAGO UTILITY ALERT NETWORK  
(312) 744-7000

CONTRACT NO. 60E79

ROUTE	SECTION	COUNTY	TOTAL SHEETS	SHEET NUMBER
VARIOUS	2008-038 I	VARIOUS	20	2

Contract 60E79

**INDEX OF SHEETS**

<u>SHEET NO</u>	<u>DESCRIPTION</u>
1	TITLE SHEET
2	INDEX OF SHEETS AND STATE STANDARDS
3	GENERAL NOTES
4	SUMMARY OF QUANTITIES
5	TYPICAL REPAIR FOR FULL DEPTH (BARRIER WALL)
6	TYPICAL REPAIR FOR HALF DEPTH (BARRIER WALL)
7	BRIDGE PARAPET REPAIR DETAILS
8 – 9	REPAIR DETAILS (LOCATION 1: SN 099-0039)
10	REPAIR DETAILS (LOCATION 2: SN 016-1109)
11-12	REPAIR DETAILS (LOCATION 3: SN 016-1084)
13-14	REPAIR DETAILS (LOCATION 4: SN 016-1084)
15	REPAIR DETAILS (LOCATION 5)
16	REPAIR DETAILS (LOCATION 6)
17	REPAIR DETAILS (LOCATION 7)
18	REPAIR DETAILS (LOCATION 8)
19	REPAIR DETAILS (LOCATION 9)
20	TRAFFIC CONTROL DETAILS FOR FREEWAY SHOULDER CLOSURES AND PARTIAL RAMP CLOSURES (TC-17)

**STATE STANDARDS**

<u>STD NO</u>	<u>DESCRIPTION</u>
637001-04	CONCRETE BARRIER 32" HEIGHT
637006-02	CONCRETE BARRIER 42" HEIGHT
701006-03	OFF-ROAD OPERATIONS, 2L, 2W, 15' TO 24" FROM PAVEMENT EDGE
701101-02	OFF-ROAD OPERATIONS, MULTILANE, 15' TO 24" FROM PAVEMENT EDGE
701301-03	LANE CLOSURE, 2L, 2W, SHORT TIME OPERATIONS
701400-03	APPROACH TO LANE CLOSURE, FREEWAY/EXPRESSWAY
701401-05	LANE CLOSURE, FREEWAY/EXPRESSWAY
701411-05	LANE CLOSURE, MULTILANE, AT ENTRANCE OR EXIT RAMP, FOR SPEEDS ≥ 45 MPH
701426-03	LANE CLOSURE, MULTILANE, INTERMITTENT OR MOVING OPERATION, FOR SPEEDS ≥ 45 MPH
701601-06	URBAN LANE CLOSURE, MULTILANE, 1W OR 2W WITH NONTRAVERSABLE MEDIAN
701606-06	URBAN LANE CLOSURE, MULTILANE, 2W WITH MOUNTABLE MEDIAN
701901-01	TRAFFIC CONTROL DEVICES

ILLINOIS DEPARTMENT OF TRANSPORTATION

INDEX OF SHEETS  
STATE STANDARDS

ROUTE	SECTION	COUNTY	TOTAL SHEETS	SHEET NUMBER
VARIOUS	2008-038 I	VARIOUS	20	3

**GENERAL NOTES**

Contract 60E79

**GENERAL NOTES (BRIDGE)**

BEFORE STARTING ANY EXCAVATION, THE CONTRACTOR SHALL CALL "J.U.L.I.E." AT (800) 892-0123 OR 811. FOR FIELD LOCATIONS OF BURIED ELECTRIC, TELEPHONE AND GAS UTILITIES. 48 HOURS NOTIFICATION IS REQUIRED.

BEFORE STARTING ANY EXCAVATION, THE CONTRACTOR SHALL CALL "C.U.A.N." (CHICAGO UTILITY ALERT NETWORK) AT (312) 744-7000 FOR FIELD LOCATIONS OF BURIED ELECTRIC, TELEPHONE AND GAS UTILITIES. 48 HOURS NOTIFICATION IS REQUIRED.

IT SHALL BE THE CONTRACTOR'S RESPONSIBILITY TO VERIFY ALL DIMENSIONS & CONDITIONS EXISTING IN THE FIELD PRIOR TO CONSTRUCTION & ORDERING OF MATERIALS.

THE CONTRACTOR WILL NOT BE ALLOWED TO SET UP A YARD OR FIELD OFFICE ON STATE PROPERTY WITHOUT WRITTEN PERMISSION FROM THE DEPARTMENT.

THE CONTRACTOR SHALL CONTACT THE DISTRICT ONE TRAFFIC CONTROL SUPERVISOR AT (847) 705-4470 FOR ARTERIALS OR (847)705-4151 FOR EXPRESSWAYS. A MINIMUM OF 72 HOURS IN ADVANCE OF BEGINNING WORK.

THE CONTRACTOR SHALL COORDINATE CONSTRUCTION ACTIVITIES WITH UTILITY COMPANIES.

THESE PLANS HAVE BEEN PREPARED FROM FIELD NOTES RECEIVED FROM MAINTENANCE ENGINEERS.

ALL WORK ASSOCIATED WITH THE REMOVAL AND REPLACEMENT OF THE BARRIER WALL IS INCIDENTAL TO THE PAY ITEM CONCRETE BARRIER WALL REMOVAL AND REPLACEMENT.

THE "ADVANCED WARNING SIGN DETAIL FOR ARTERIAL TRAFFIC" LOCATED IN THE SPECIAL PROVISIONS FOR "TEMPORARY INFORMATION SIGNING FOR LANE CLOSURES" IS APPLICABLE ONLY TO ARTERIAL ROADS AND SHALL NOT BE APPLIED TO EXPRESSWAYS.

THE CONTRACTOR SHALL BE REQUIRED TO PROVIDE ACCESS TO ABUTTING PROPERTY AT ALL TIMES DURING THE CONSTRUCTION OF THIS PROJECT.

DO NOT SCALE PLANS FOR CONSTRUCTION DIMENSIONS.

WHEN ARTIFICIAL LIGHTING IS UTILIZED IN NIGHT OPERATIONS, THE CONTRACTOR SHALL EXERCISE THE UTMOST PRECAUTIONS IN PREVENTING ADVERSE VISIBILITY TO THE MOTORING PUBLIC AND ADJOINING RESIDENTIAL AREAS.

THE CONTRACTOR SHALL TAKE NECESSARY PRECAUTIONS TO INSURE THAT NO DEBRIS WILL ENDANGER OR INTERFERE WITH TRAFFIC ON THE ROADWAY BENEATH THE BRIDGE ACCORDING TO ARTICLE 107.09 OF THE STANDARD SPECIFICATIONS. THIS WORK WILL NOT BE PAID FOR SEPERATELY, BUT SHALL BE INCLUDED IN THE CONTRACT UNIT PRICE FOR THE APPROPRIATE PAYITEM INVOLVED. AND NO ADDITIONAL COMPENSATION WILL BE ALLOWED.

EXISTING REINFORCEMENT BARS EXTENDING INTO THE REMOVAL AREA SHALL BE CLEANED, STRAIGHTENED AND INCORPORATED INTO THE NEW CONSTRUCTION. ANY REINFORCEMENT BARS THAT ARE DAMAGED DURING CONCRETE REMOVAL SHALL BE REPLACED WITH AN APPROVED BAR SPLICER OR ANCHORAGE SYSTEM. COST INCLUDED WITH CONCRETE REMOVAL.

PLAN DIMENTIONS AND DETAILS RELATIVE TO EXISTING PLANS ARE SUBJECT TO ROUTINE VARIATIONS. THE CONTRACTOR SHALL FIELD VERIFY EXISTING DIMENTIONS AND DETAILS AFFECTING NEW CONSTRUCTION AND MAKE NECESSARY APPROVED ADJUSTMENT PRIOR TO CONSTRUCTION OR ORDERING OF MATERIALS. SUCH VARIATIONS SHALL NOT BE CAUSE FOR ADDITIONAL COMPENSATION FOR A CHANGE IN SCOPE OF THE WORK, HOWEVER, THE CONTRACTOR WILL BE PAID FOR THE QUANTITY ACTUALLY FURNISHED BASED UPON THE UNIT PRICE BID FOR THE WORK.

REINFORCEMENT BARS SHALL CONFORM TO THE REQUIREMENT OF ASTM A 706 Gr 60 (IL MODIFIED). SEE SPECIAL PROVISIONS.

REINFORCEMENT BARS DESIGNATED (E) SHALL BE EPOXY COATED.

JOINTS ARE TO BE INSTALLED TO MATCH EXISTING.

IF A GAP IN THE PARAPET IS TO OCCUR FOR ANY PERIOD OF TIME, A TEMPORARY RAILING MUST BE INSTALLED SO THAT AT NO TIME SHALL THERE BE AN OPENING IN ANY PORTION OF THE EXISTING SYSTEM.

THE CONTRACTOR SHALL SALVAGE AND RETURN THE EXISTING GUARDRAIL TO:

DISTRICT BRIDGE OFFICE  
1101 BIESTERFIELD RD.  
ELK GROVE VILLAGE, IL 60007

THIS WORK SHALL INCLUDE REMOVING, TRANSPORTING AND UNLOADING THE EXISTING CARRIER BEAM TO THE ABOVE YARD WHICH COST IS INCLUDED IN THE COST OF "CONCRETE BARRIER WALL REMOVAL AND REPLACE, LOCATION (NUMBER);"

ILLINOIS DEPARTMENT OF TRANSPORTATION

GENERAL NOTES

Rev.

ROUTE	SECTION	COUNTY	TOTAL SHEETS	SHEET NUMBER
VARIOUS	2008-038 I	VARIOUS	20	4

CONTRACT: 60E79

SUMMARY OF QUANTITIES

				CONSTRUCTION TYPE CODE: SFTY - 2A								
				VARIOUS COUNTIES - URBAN								
Code No.	Description	Unit	Total Quantities	Loc 1 SN 099-0039	Loc 2 SN 016-1109	Loc 3 SN 016-1084	Loc 4 SN 016-1084	Loc 5	Loc 6	Loc 7	Loc 8	Loc 9
67000400	ENGINEER'S FIELD OFFICE, TYPE A	CAL MO	3	0.33	0.34	0.33	0.34	0.33	0.33	0.33	0.33	0.34
67100100	MOBILIZATION	L SUM	1	0.11	0.11	0.11	0.11	0.11	0.11	0.12	0.11	0.11
70102625	TRAFFIC CONTROL AND PROTECTION, STANDARD 701606	L SUM	1		1							
70102630	TRAFFIC CONTROL AND PROTECTION, STANDARD 701601	L SUM	1								0.5	0.5
X0323723	CONCRETE BARRIER WALL REMOVAL AND REPLACEMENT , LOCATION 1	L SUM	1	1								
X0323724	CONCRETE BARRIER WALL REMOVAL AND REPLACEMENT , LOCATION 2	L SUM	1		1							
X0323725	CONCRETE BARRIER WALL REMOVAL AND REPLACEMENT , LOCATION 3	L SUM	1			1						
X0323726	CONCRETE BARRIER WALL REMOVAL AND REPLACEMENT , LOCATION 4	L SUM	1				1					
X0323727	CONCRETE BARRIER WALL REMOVAL AND REPLACEMENT , LOCATION 5	L SUM	1					1				
X0323728	CONCRETE BARRIER WALL REMOVAL AND REPLACEMENT , LOCATION 6	L SUM	1						1			
X0323729	CONCRETE BARRIER WALL REMOVAL AND REPLACEMENT , LOCATION 7	L SUM	1							1		
X0323730	CONCRETE BARRIER WALL REMOVAL AND REPLACEMENT , LOCATION 8	L SUM	1								1	
X0323731	CONCRETE BARRIER WALL REMOVAL AND REPLACEMENT , LOCATION 9	L SUM	1									1
X7011015	TRAFFIC CONTROL AND PROTECTION (EXPRESSWAYS)	L SUM	1	0.14	0.15	0.14	0.15	0.14	0.14	0.14		
X0322467	TEMPORARY INFORMATION SIGNING FOR LANE CLOSURES	SQ FT	96		48						24	24

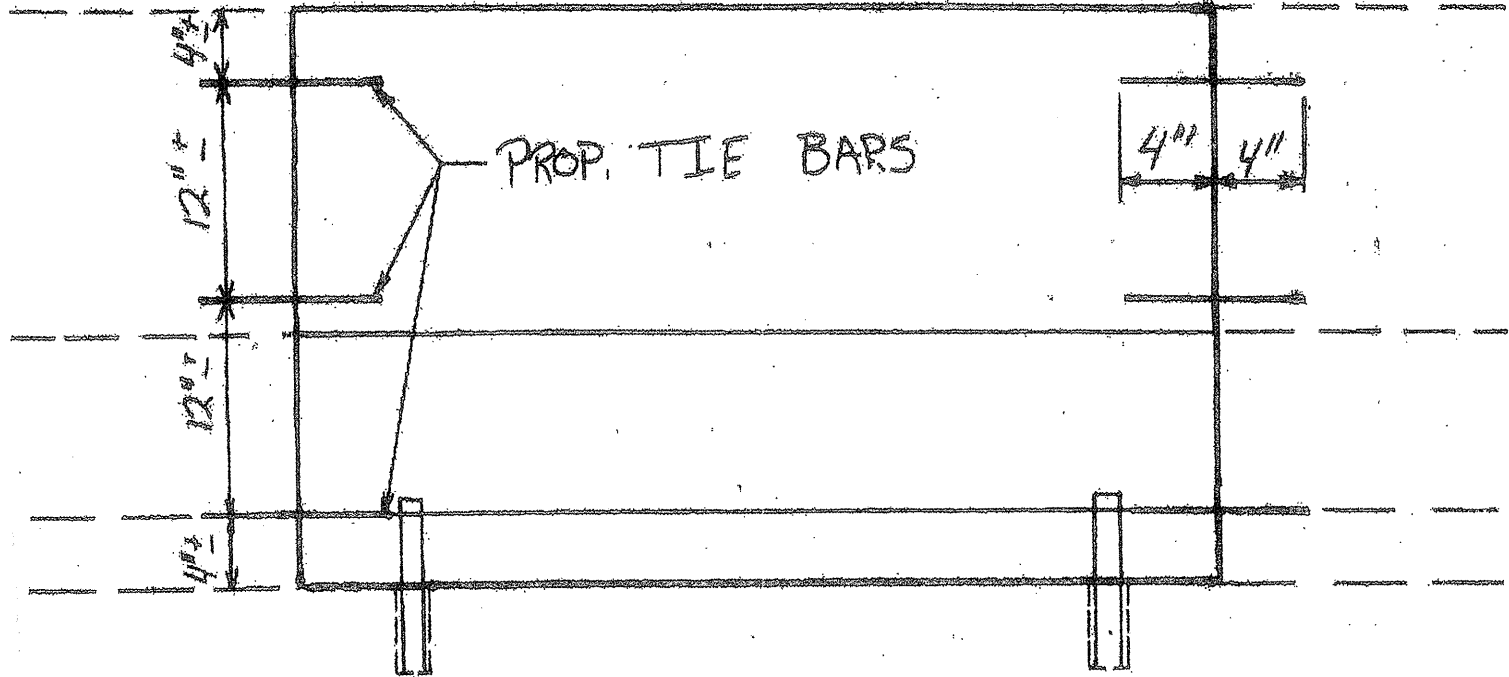
ILLINOIS DEPARTMENT OF TRANSPORTATION

SUMMARY OF QUANTITIES



ROUTE	SECTION	COUNTY	TOTAL SHEETS	SHEET NUMBER
VARIOUS	2008-038 I	VARIOUS	20	5

Contract 60E79



### FULL DEPTH REPAIR

**NOTE:**

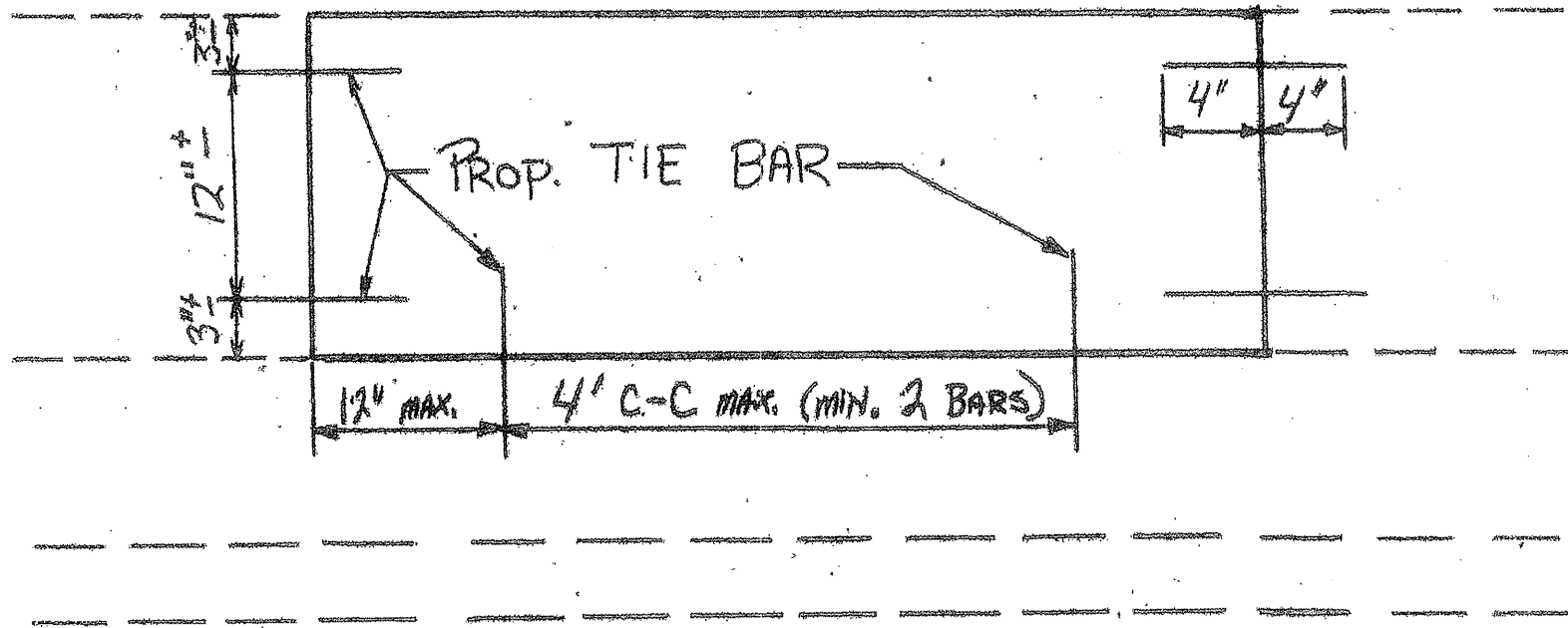
ALL BARRIER WALL REPAIR SHALL BE COMPLETED IN ACCORDANCE WITH STATE STANDARD 637001 AND SECTION 637 OF THE STANDARD SPECIFICATIONS AND AS SHOWN ON THE PLANS. ALL PROPOSED DOWEL BARS AND TIE BARS SHALL BE DRILLED AND GROUTED IN PLACE. REINFORCEMENT SHALL BE INCLUDED AS SHOWN IN STANDARD 637001 AND DESCRIBED IN SECTION 637 OF THE STANDARD SPECIFICATIONS EXCEPT WHEN A REINFORCEMENT CAGE IS ENCOUNTERED. IN SUCH A CASE, THE CONTRACTOR SHALL REMOVE THE DAMAGED PORTIONS OF THE CAGE AND SHALL REPLACE IT WITH BARS OF THE SAME SIZE AND SPACING. THE SCOPE OF REPAIR AT EACH LOCATION SHALL BE AS SHOWN ON THE PLANS AND APPROVED BY THE ENGINEER PRIOR TO CONSTRUCTION.

ILLINOIS DEPARTMENT OF TRANSPORTATION

TYPICAL REPAIR FOR  
FULL DEPTH (BARRIER WALL)

ROUTE	SECTION	COUNTY	TOTAL SHEETS	SHEET NUMBER
VARIOUS	2008-038 I	VARIOUS	20	6

Contract 60E79



### HALF DEPTH REPAIR

#### NOTE:

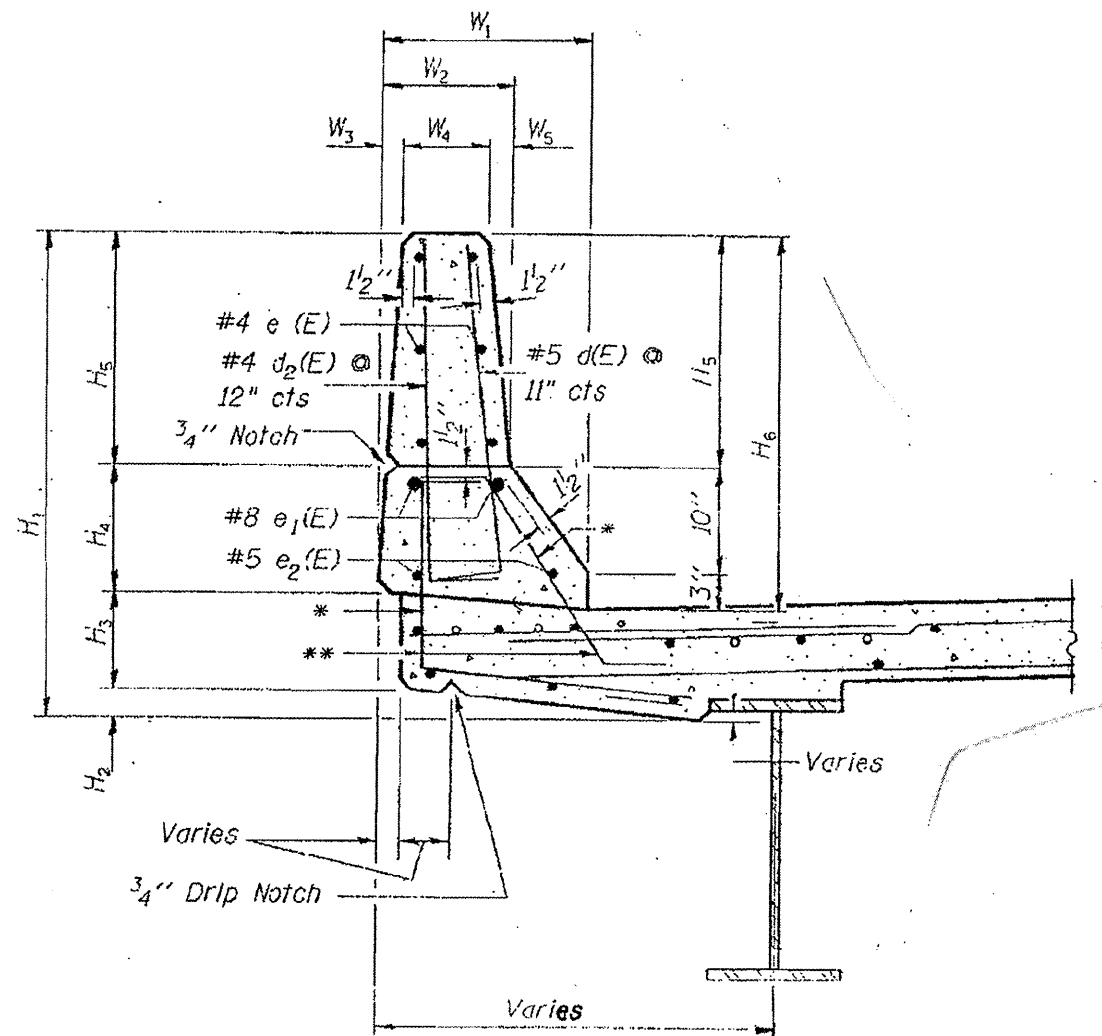
ALL BARRIER WALL REPAIR SHALL BE COMPLETED IN ACCORDANCE WITH STATE STANDARD 637001 AND SECTION 637 OF THE STANDARD SPECIFICATIONS AND AS SHOWN ON THE PLANS. ALL PROPOSED DOWEL BARS AND TIE BARS SHALL BE DRILLED AND GROUTED IN PLACE. REINFORCEMENT SHALL BE INCLUDED AS SHOWN IN STANDARD 637001 AND DESCRIBED IN SECTION 637 OF THE STANDARD SPECIFICATIONS EXCEPT WHEN A REINFORCEMENT CAGE IS ENCOUNTERED. IN SUCH A CASE, THE CONTRACTOR SHALL REMOVE THE DAMAGED PORTIONS OF THE CAGE AND SHALL REPLACE IT WITH BARS OF THE SAME SIZE AND SPACING. THE SCOPE OF REPAIR AT EACH LOCATION SHALL BE AS SHOWN ON THE PLANS AND APPROVED BY THE ENGINEER PRIOR TO CONSTRUCTION.

ILLINOIS DEPARTMENT OF TRANSPORTATION

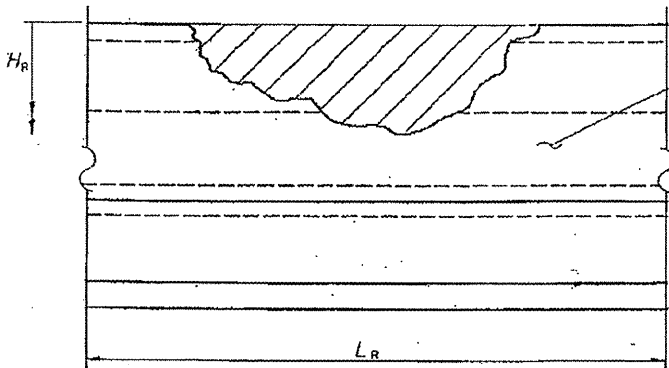
TYPICAL REPAIR FOR  
HALF DEPTH (BARRIER WALL)

ROUTE	SECTION	COUNTY	TOTAL SHEETS	SHEET NUMBER
VARIOUS	2008-038 I	VARIOUS	20	7

Contract 60E79



SECTION THRU PARAPET



FRONT FACE OF PARAPET

$H_R$  and  $L_R$  indicate dimensions for concrete removal. Perimeters of concrete removal areas shall be saw cut  $\frac{3}{4}$ " prior to removal of concrete.

NOTE: Concrete removal shall extend a minimum of 6" past damage or to joint if within 2'-0".

The cost of saw cuts shall be included in the cost of "Concrete Removal"

\* Existing bars to be cleaned, straightened, and incorporated in new construction

\*\* Note: If existing vertical rebar is missing, bars  $d_1(E)$  and  $d_2(E)$  shall be straightened and epoxy grouted into existing concrete 9" deep. Cost shall be included in "concrete Barrier Wall Removal and Replace, Location (Number)".

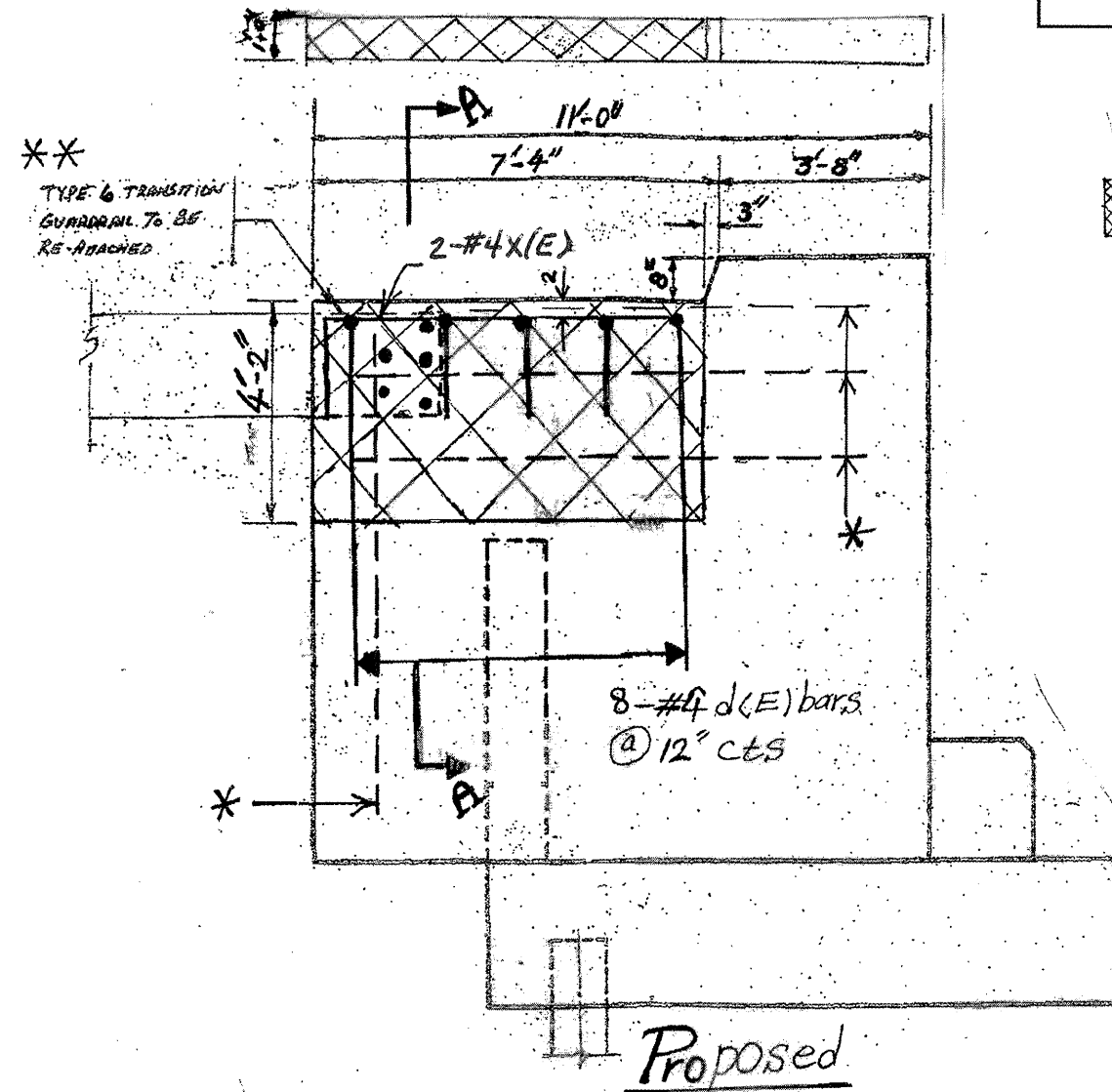
ILLINOIS DEPARTMENT OF TRANSPORTATION

BRIDGE PARAPET  
REPAIR DETAILS

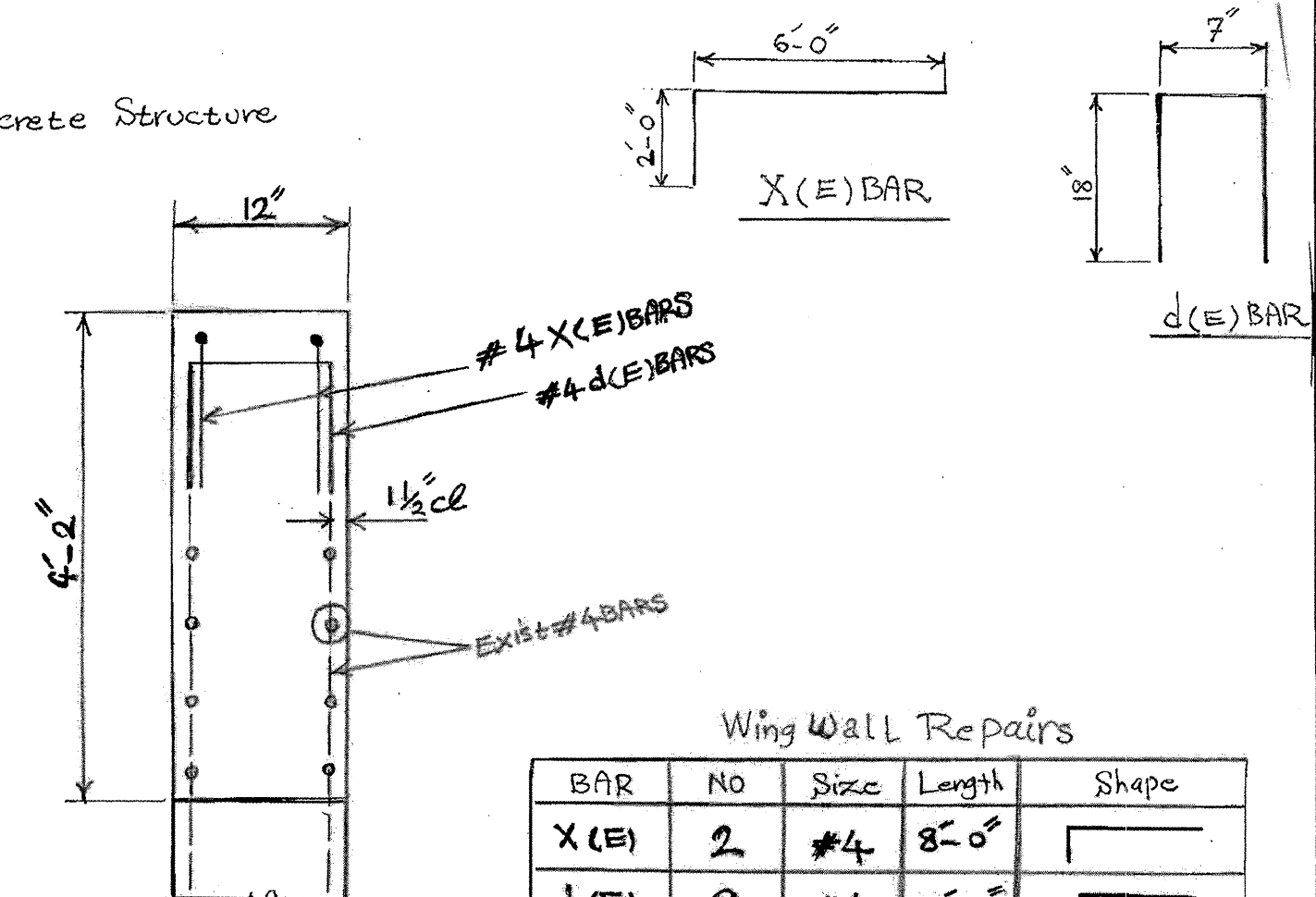


ROUTE	SECTION	COUNTY	TOTAL SHEETS	SHEET NUMBER
VARIOUS	2008-038 I	VARIOUS	20	9

Contract 60E79



Concrete Structure



Section A-A

Wing Wall Repairs

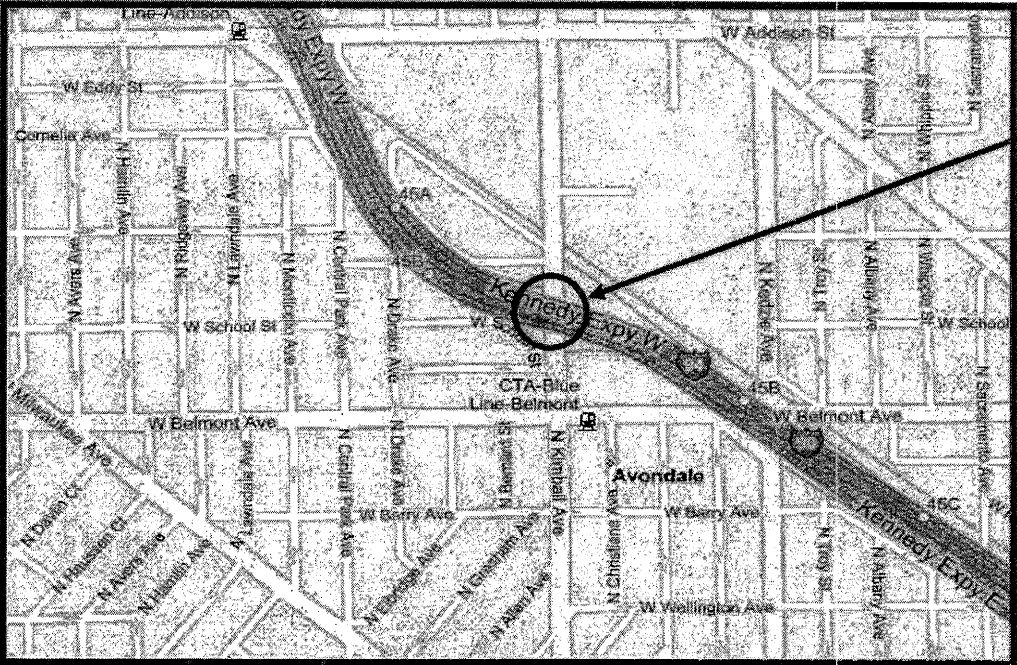
BAR	NO	Size	Length	Shape
X(E)	2	#4	8'-0"	└─┘
d(E)	8	#4	3'-7"	└─┘
Reinforcement BARS Epoxy ctd			Lbs	30
Concrete Structures			cu. yd	1.1
Concrete Removal			cu. yd	1.0
For Information Only				

- \* NOTE:**  
Existing reinforcement bars extended into the removal area shall be cleaned, straightened and incorporated into the new construction. Any reinforcement bars that are damaged during concrete removal shall be replaced with an approved bar splicer or anchorage system. Cost included with "concrete Barrier Wall Removal and Replacement, Location (1)."
- \*\***  
Existing guardrail type 6 traffic barrier terminal section to be disconnected as required and reconnected to wingwall. Cost, including disposal and new connection hardware required, shall be included in the cost of "concrete Barrier Wall Removal and Replacement, Location (1)."

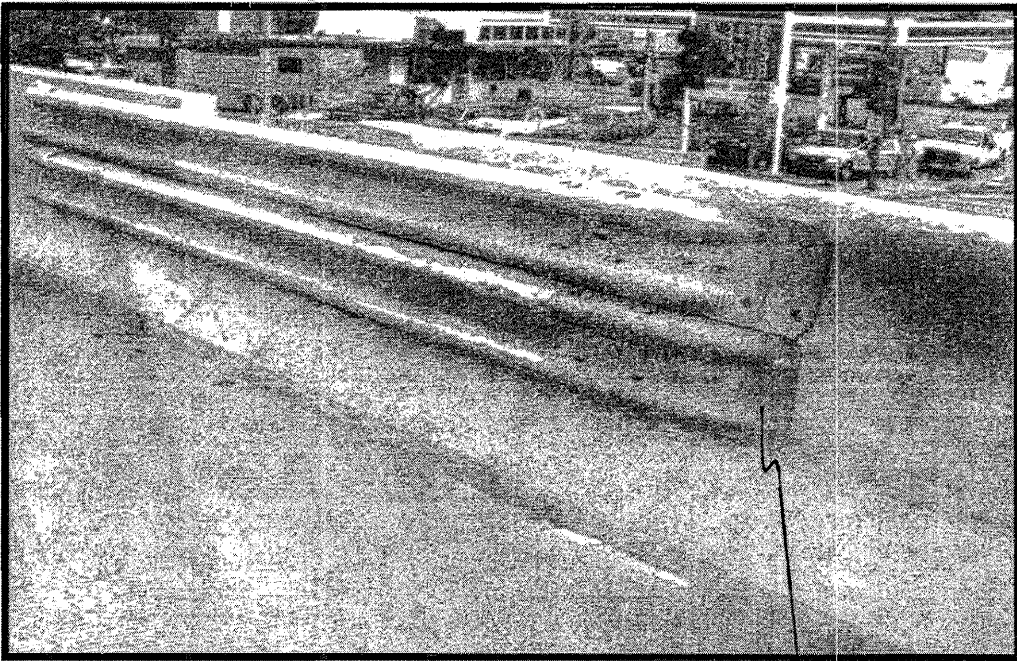
ILLINOIS DEPARTMENT OF TRANSPORTATION

LOCATION: 1  
SN 099-0039





CITY OF CHICAGO  
JEFFERSON & WEST CHICAGO TOWNSHIPS  
COOK COUNTY

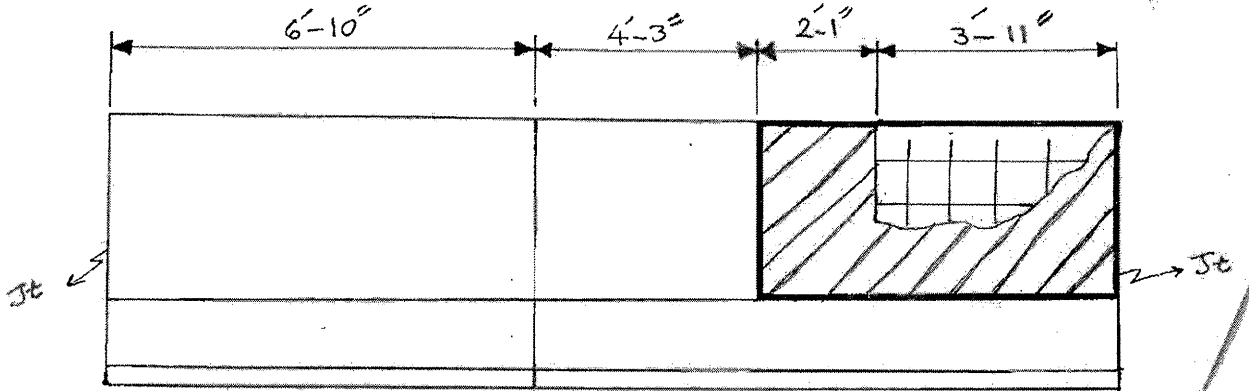


Salvage Guardrail Return to Bieserfield Yard

ROUTE	SECTION	COUNTY	TOTAL SHEETS	SHEET NUMBER
VARIOUS	2008-038 I	VARIOUS	20	10

LOCATION 2: I-90/94 over Kimball Ave (SN 016-1109)

Contract 60E79



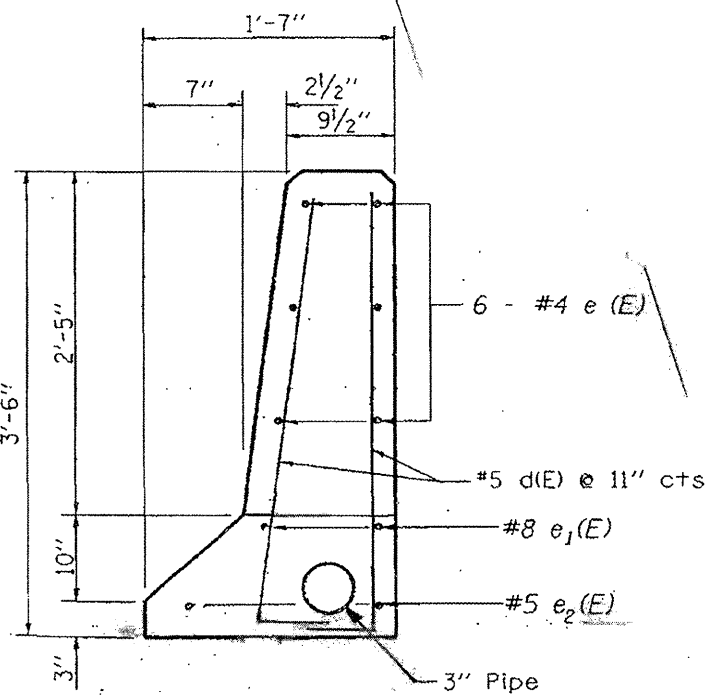
ELEVATION

- Hatched Area Indicates Concrete Removal
- Indicates Limits of Concrete Structures

Half Depth Parapet Repair  
See sheet 7 for more details

BAR	NO.	Size	Length	Shape
E(E)	6	#4	5'-9"	—
Mechanical Splice			EA	6
Reinforcement Bars Epoxy ctd			Lbs	25
Concrete Structures			cu. yd	0.4
Concrete Removal			cu. yd	0.3

For Information Only



SECTION

TRAFFIC DATA:

I-90/94: SPEED LIMIT = 55 MPH  
2006 ADT = 273,400

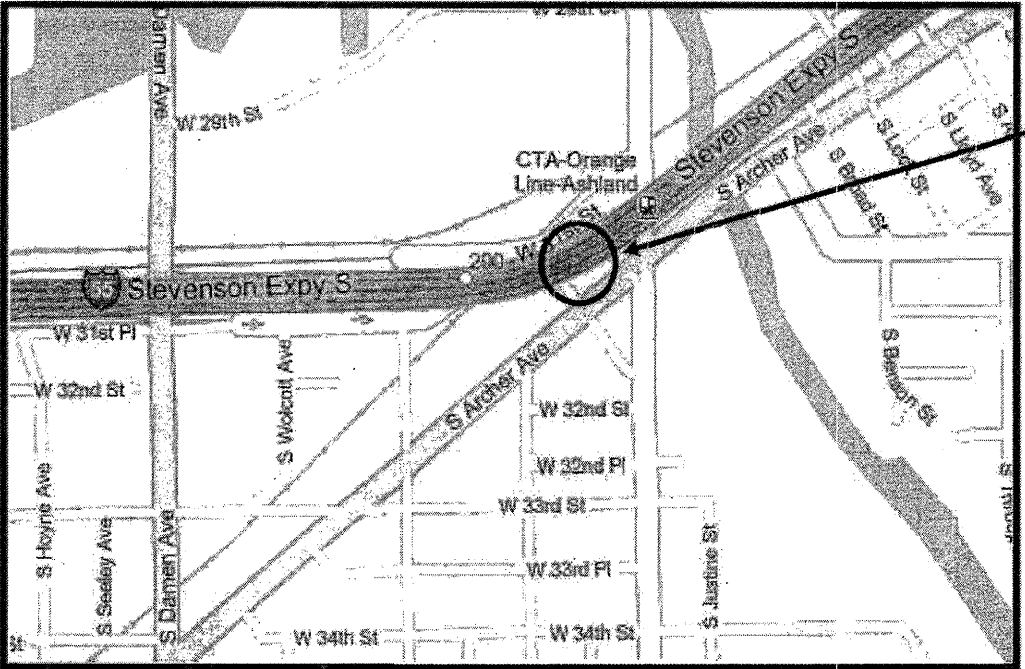
ILLINOIS DEPARTMENT OF TRANSPORTATION

LOCATION: 2  
SN 016-1109

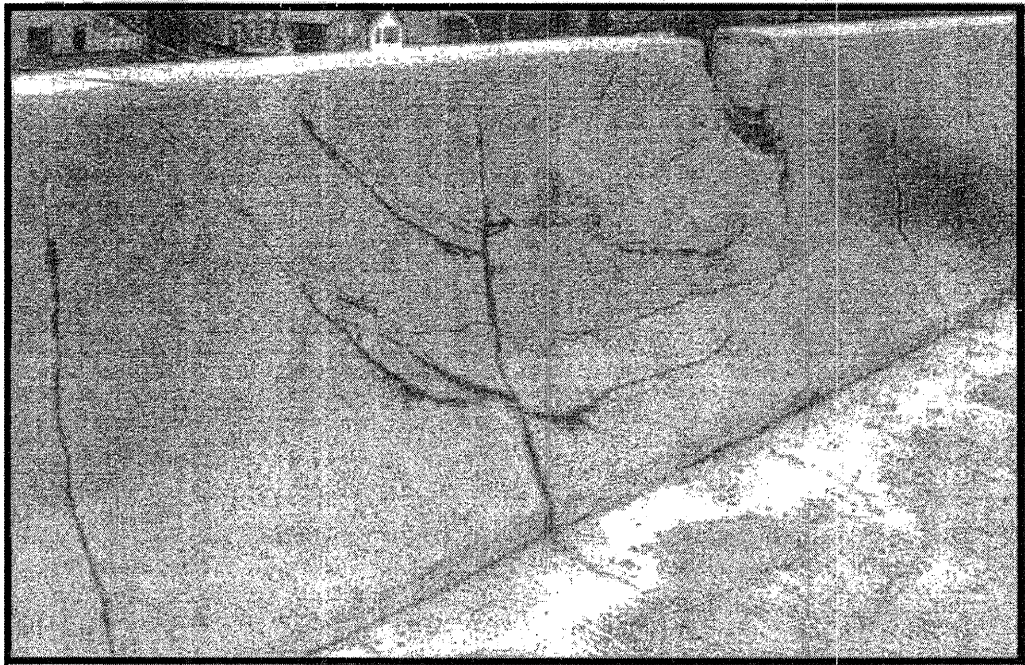
ROUTE	SECTION	COUNTY	TOTAL SHEETS	SHEET NUMBER
VARIOUS	2008-038 I	VARIOUS	20	11

R 14 E

T 39 N

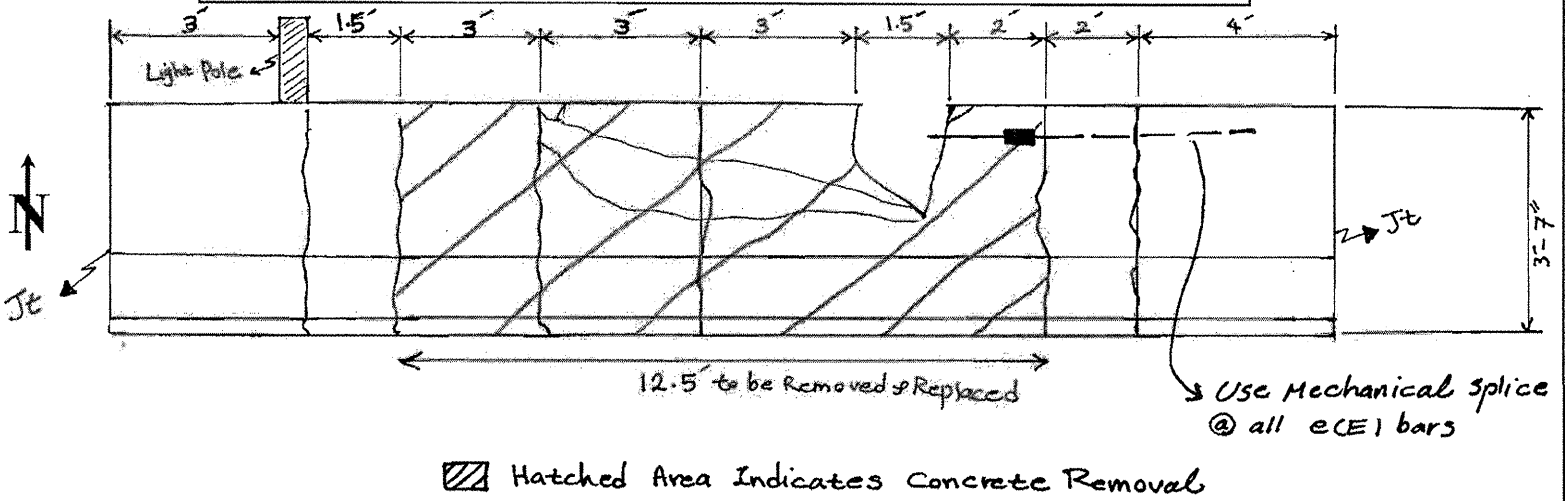


CITY OF CHICAGO  
SOUTH CHICAGO TOWNSHIP  
COOK COUNTY



**LOCATION 3: I-55 EB OVER ASHLAND AVE TO WOLCOTT VIADUCT**  
(DAMAGE IN SOUTH PARAPET, APPROX 560 FT FROM THE CENTERLINE OF ROBINSON ST.) (SN 016-1084)

Contract 60E79



**TRAFFIC DATA:**

I-55: SPEED LIMIT = 55 MPH  
2006 ADT = 163,200

ILLINOIS DEPARTMENT OF TRANSPORTATION

LOCATION: 3  
SN 016-1084

SHEET 1 OF 2



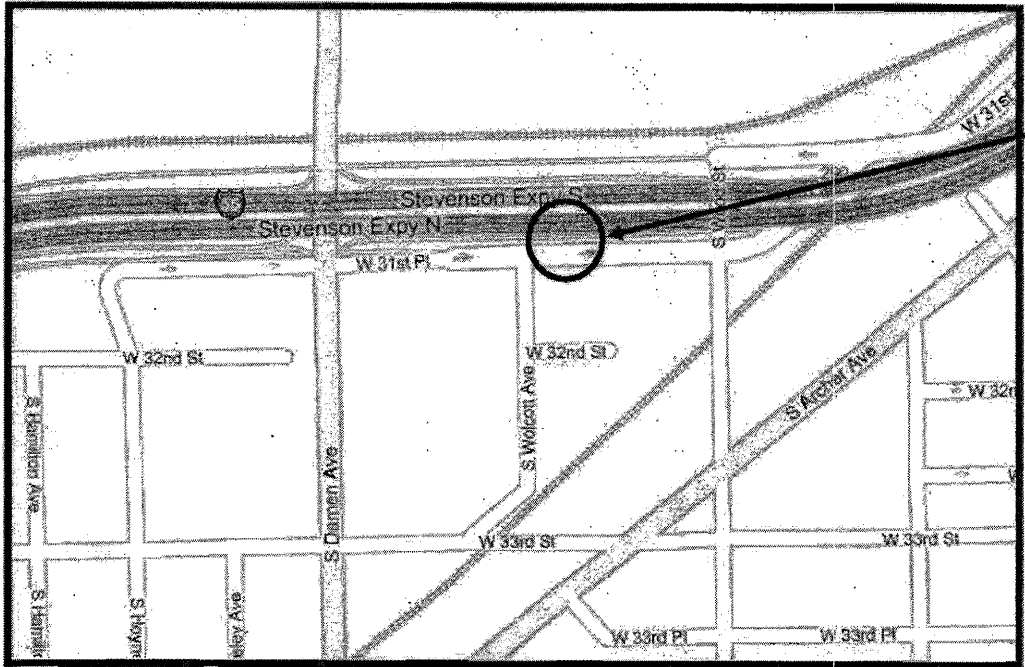


ROUTE	SECTION	COUNTY	TOTAL SHEETS	SHEET NUMBER
VARIOUS	2008-038 I	VARIOUS	20	13

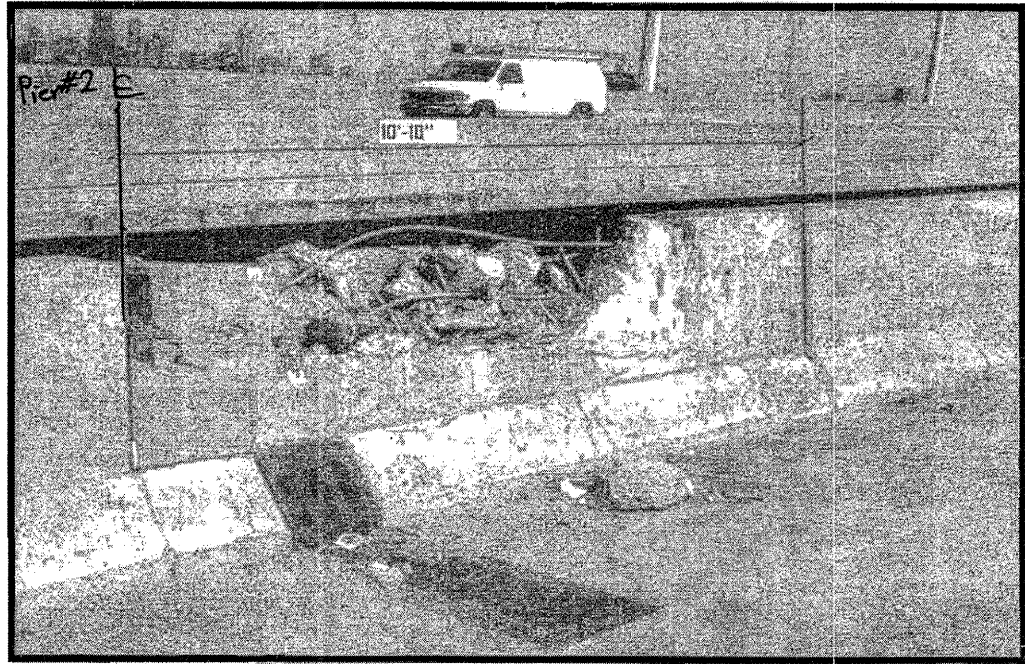
R 14 E

Contract 60E79

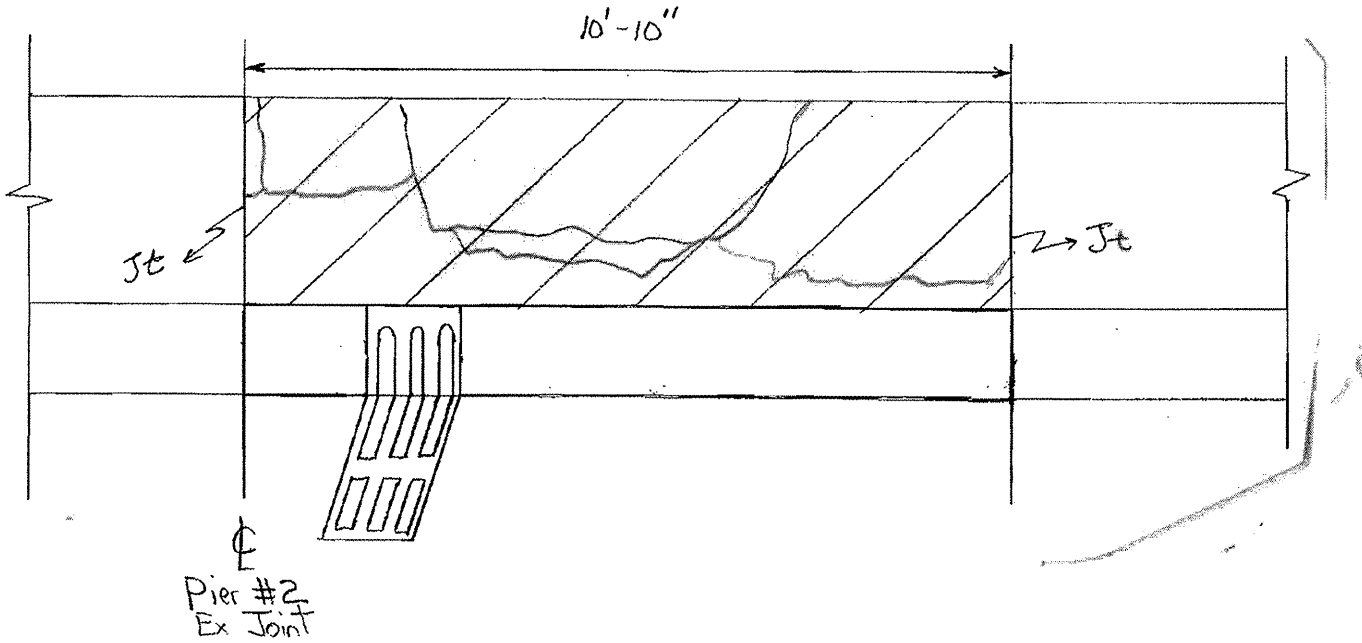
T 39 N



CITY OF CHICAGO  
SOUTH CHICAGO TOWNSHIP  
COOK COUNTY



LOCATION 4: I-55 NB 450 FEET EAST OF DAMEN AVE. ON THE LEFT SIDE  
(NEXT TO PIER #2, SN 016-1084)



Hatched Area Indicates Concrete Removal

**TRAFFIC DATA:**

I-55: SPEED LIMIT = 55 MPH  
2006 ADT = 150,500

SHEET 1 OF 2

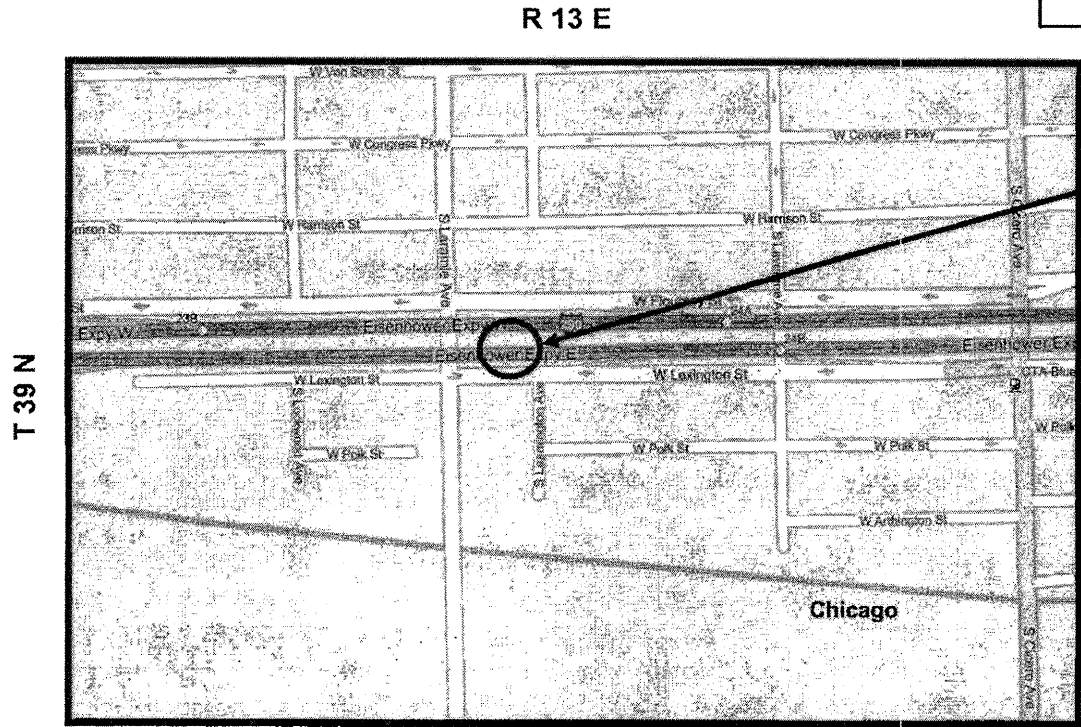
ILLINOIS DEPARTMENT OF TRANSPORTATION

LOCATION: 4  
SN 016-1084



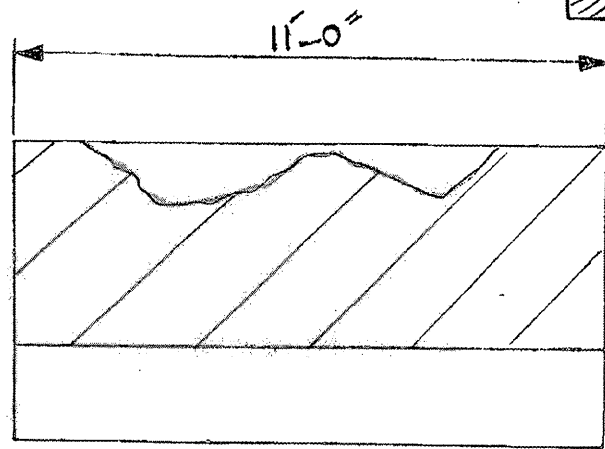
ROUTE	SECTION	COUNTY	TOTAL SHEETS	SHEET NUMBER
VARIOUS	2008-038 I	VARIOUS	20	15

Contract 60E79



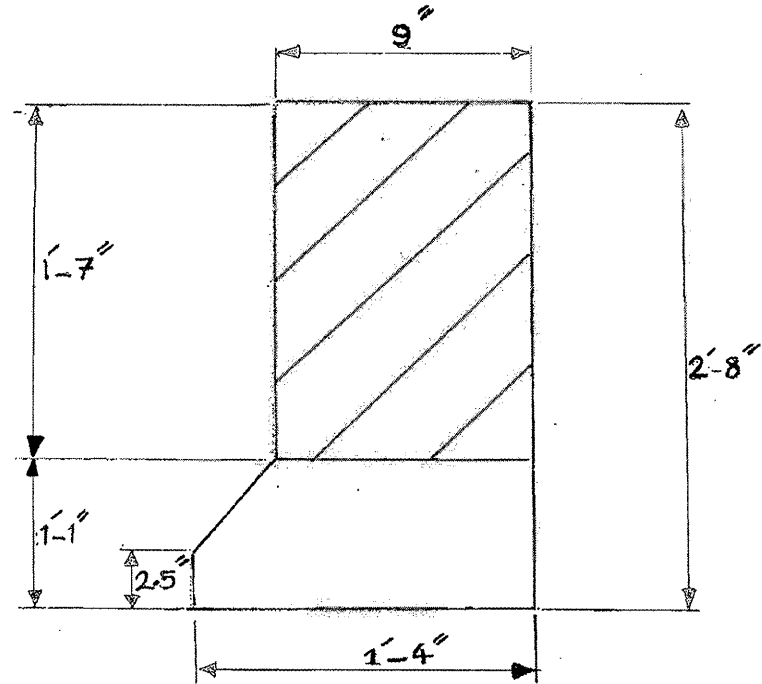
CITY OF CHICAGO  
OAK PARK TOWNSHIP  
COOK COUNTY

LOCATION 5: I-290 EB JUST EAST OF LARAMIE OVERPASS (ON THE RIGHT)

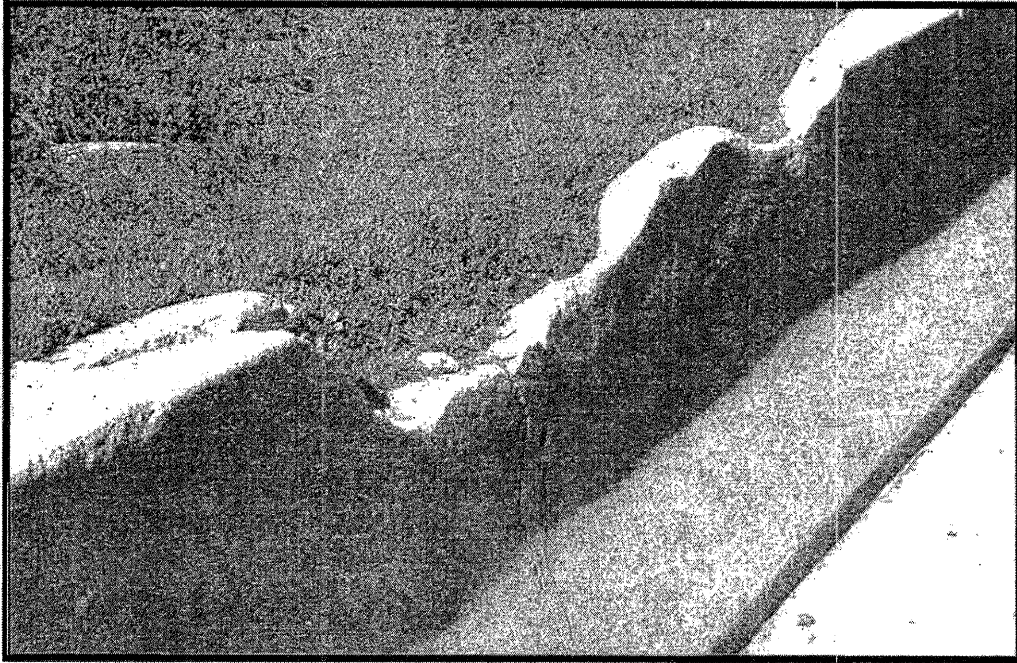


ELEVATION

Hatched Area Indicates Concrete Removal



SECTION



Half Depth  
Barrier Repair  
See sheet 6 for more details

~ Concrete Removal (Cu Yd)	0.3
~ Concrete Structure (Cu Yd)	0.5
For Information Only	

TRAFFIC DATA:

I-290: SPEED LIMIT = 55 MPH  
2006 ADT = 209,900

ILLINOIS DEPARTMENT OF TRANSPORTATION

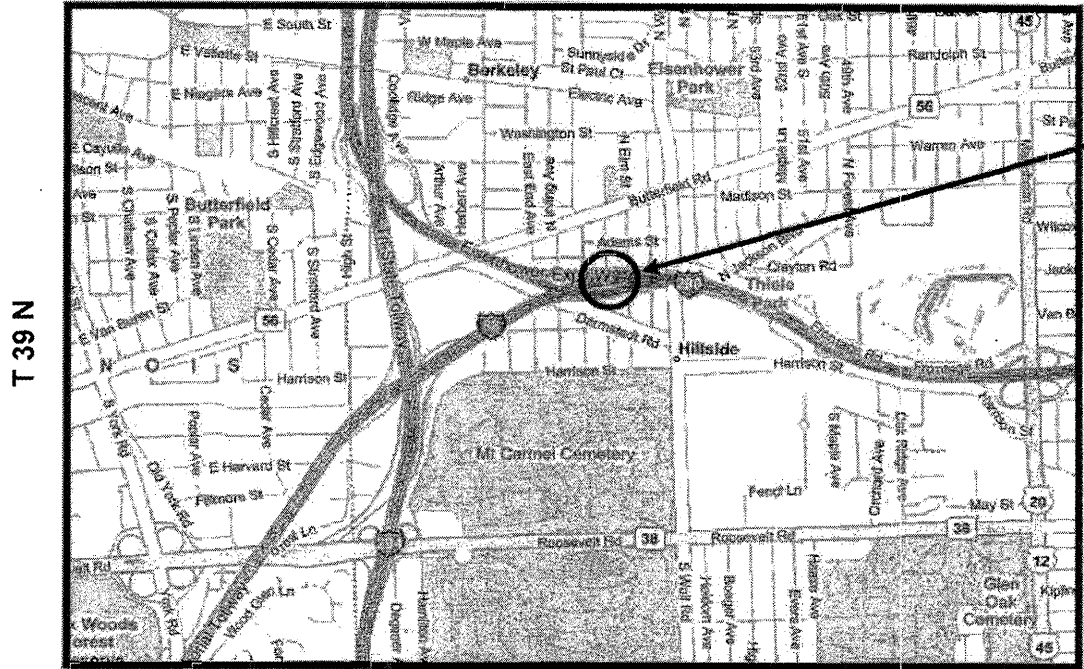
LOCATION: 5  
I-290 @ LARAMIE



ROUTE	SECTION	COUNTY	TOTAL SHEETS	SHEET NUMBER
VARIOUS	2008-038 I	VARIOUS	20	16

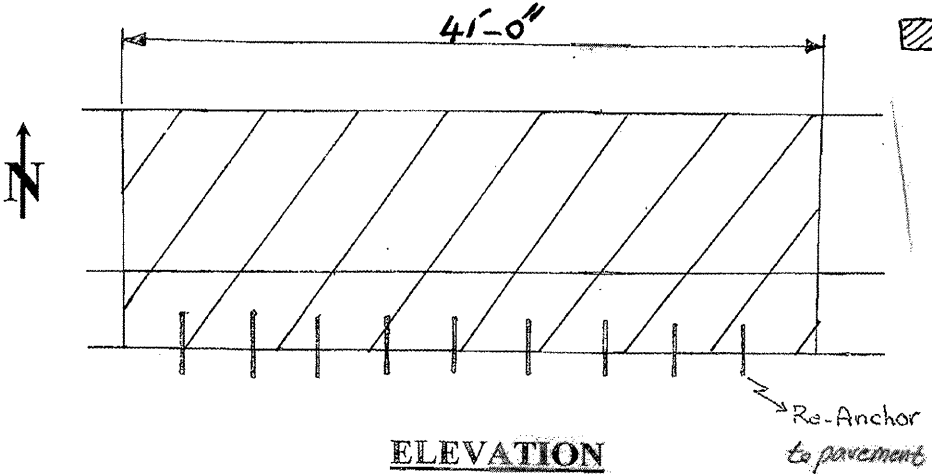
Contract 60E79

R 12 E

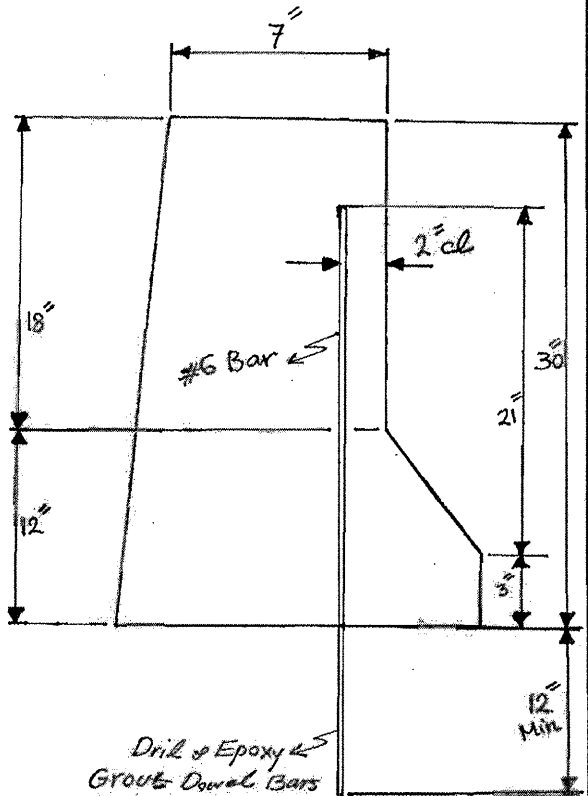


VILLAGE OF HILLSIDE  
RIVERSIDE TOWNSHIP  
COOK COUNTY

LOCATION 6: I-290 EB BETWEEN ENTRANCE RAMP FROM IL 56 (BUTTERFIELD RD.) AND EXIT RAMP TO N/SB MANNHEIM ROAD (EXIT #17); ON RIGHT SIDE OF RAMP.



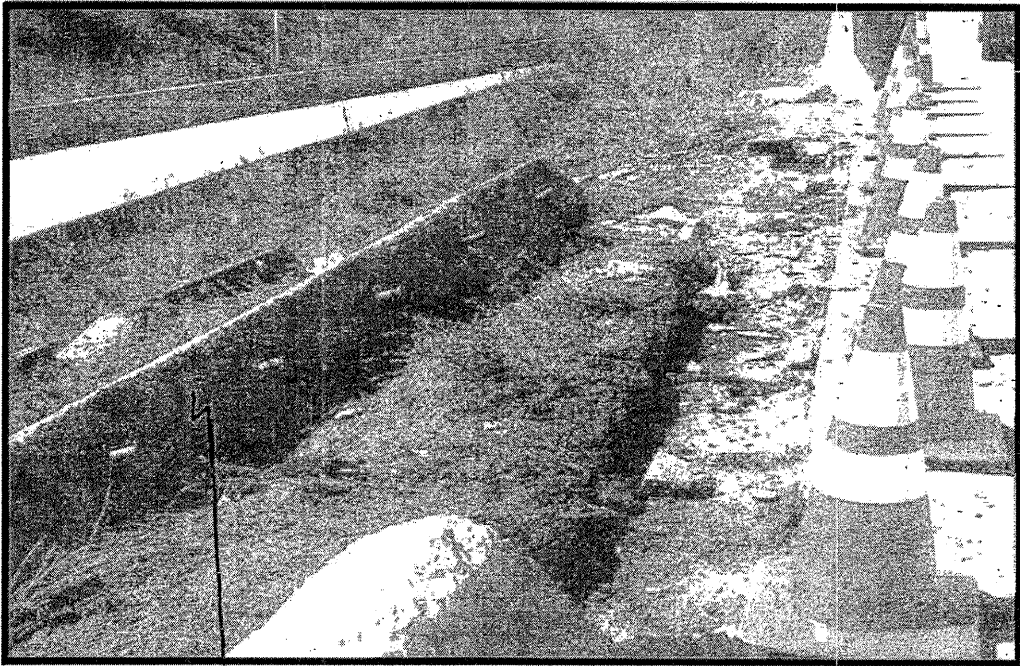
Hatched Area Indicates concrete Removal



SECTION

ILLINOIS DEPARTMENT OF TRANSPORTATION

LOCATION: 6  
I-290 @ IL 56



Damage Section to be Removed by Contractor \*

\* Barrier wall knocked over in shoulder area shall be removed, cost included in concrete removal.

Full Depth  
Barrier Repair  
see sheet 5 for more details

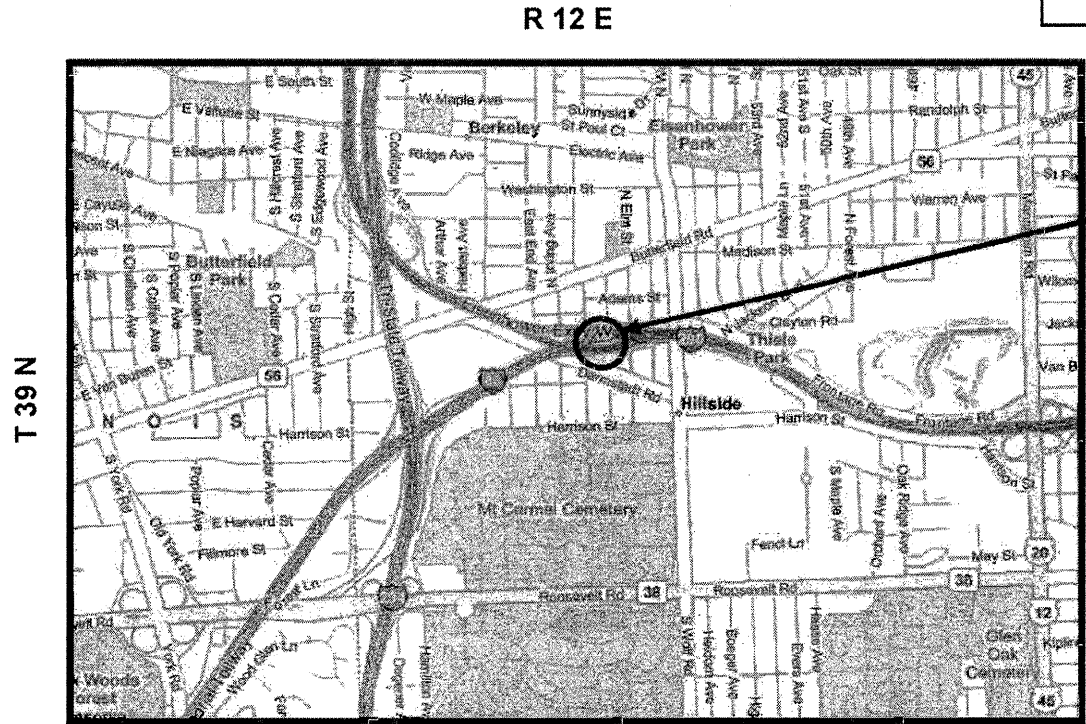
~ Concrete Removal (Cu Yd)	2.2
~ Concrete Structure (Cu Yd)	2.2
For Information Only	

TRAFFIC DATA:

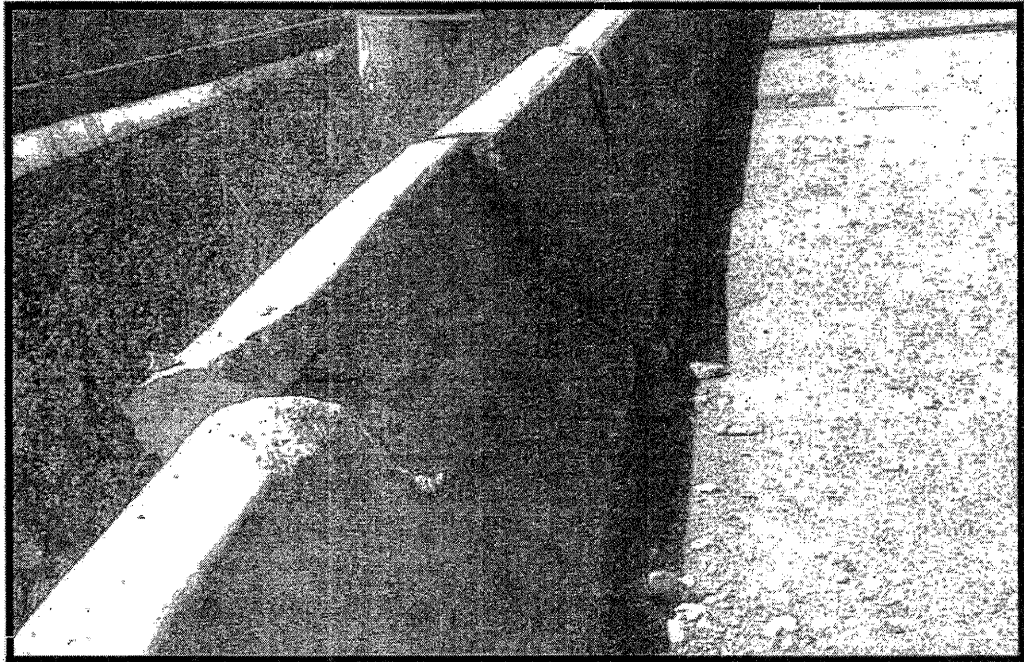
I-290: SPEED LIMIT = 55 MPH  
2006 ADT = 104,900

ROUTE	SECTION	COUNTY	TOTAL SHEETS	SHEET NUMBER
VARIOUS	2008-038 I	VARIOUS	20	17

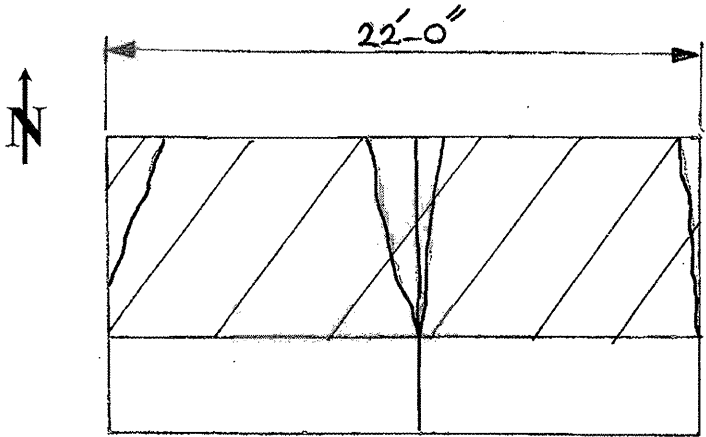
Contract 60E79



VILLAGE OF HILLSIDE  
RIVERSIDE TOWNSHIP  
COOK COUNTY

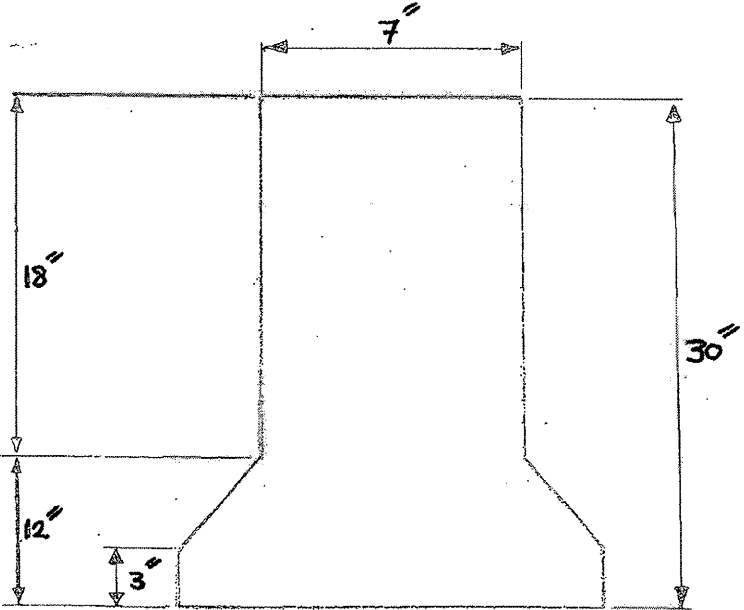


LOCATION 7: I-290 EB BETWEEN ENTRANCE RAMP FROM IL 56 (BUTTERFIELD RD.) AND EXIT RAMP TO N/SB MANNHEIM ROAD (EXIT #17); ON RIGHT SIDE OF RAMP. (EAST OF OVERHEAD SIGN BE33100, 25 FEET FROM LOCATION #6)



ELEVATION

Hatched Area Indicates Concrete Removal



SECTION

Half Depth  
Barrier Repair  
see sheet 6 for more details

~ Concrete Removal (Cu Yd)	0.7
~ Concrete Structure (Cu Yd)	0.7
For Information Only	

TRAFFIC DATA:  
I-290: SPEED LIMIT = 55 MPH  
2006 ADT = 104,900

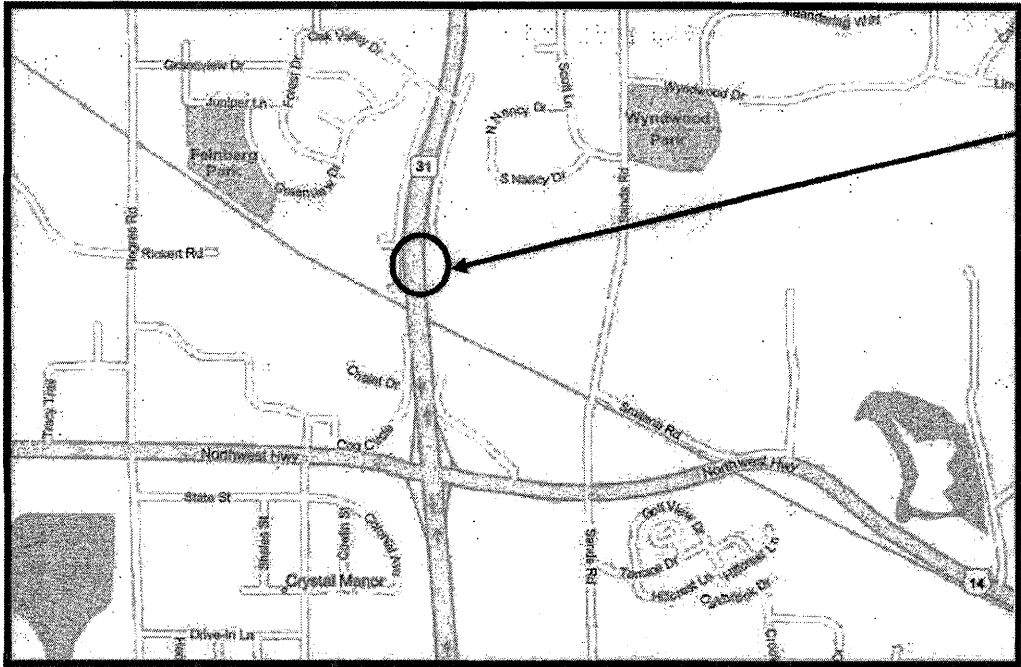
ILLINOIS DEPARTMENT OF TRANSPORTATION

LOCATION: 7  
I-290 @ IL 56

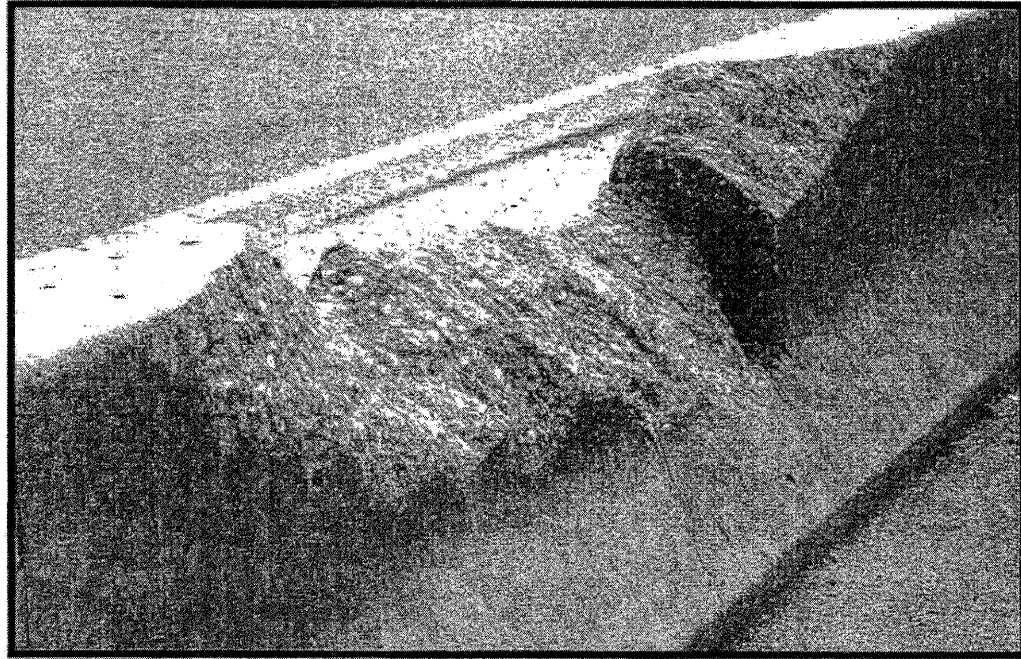
ROUTE	SECTION	COUNTY	TOTAL SHEETS	SHEET NUMBER
VARIOUS	2008-038 I	VARIOUS	20	18

R 8 E

T 43 N

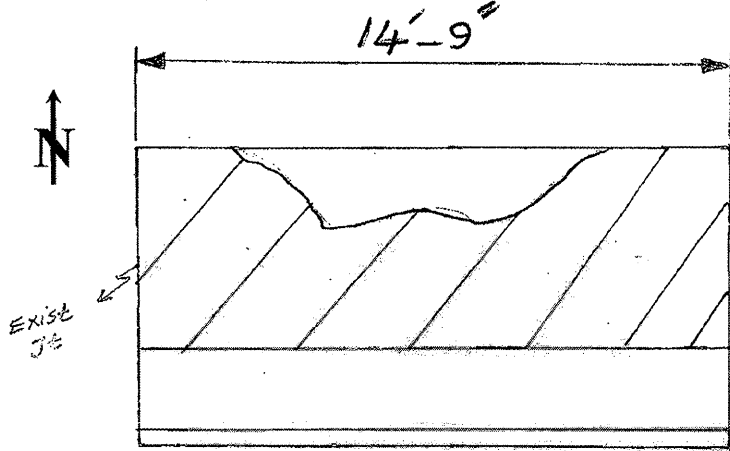


CITY OF CRYSTAL LAKE  
ALGONQUIN TOWNSHIP  
MC HENRY COUNTY



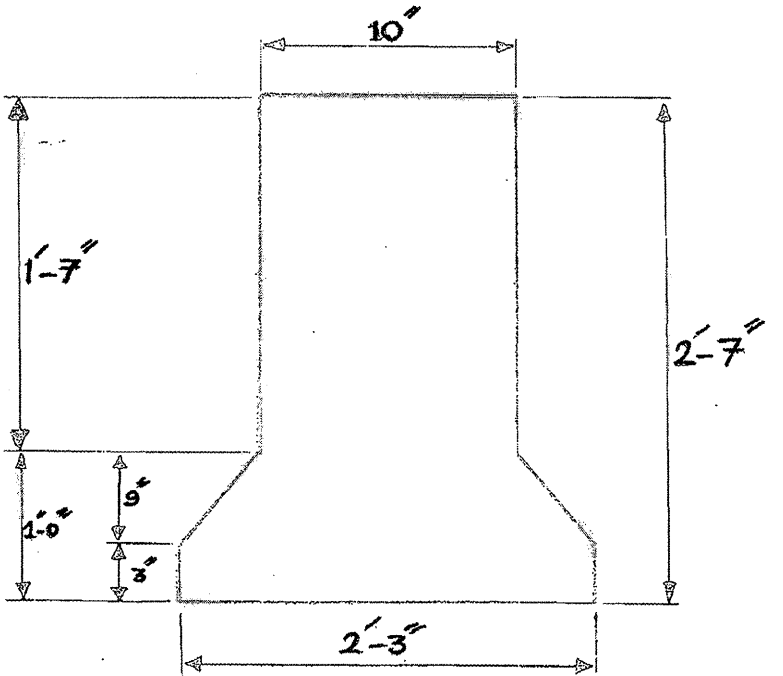
LOCATION 8: IL ROUTE 31, ¼ MILE NORTH OF US ROUTE 14 (40 FEET NORTH OF THE BRIDGE OVER CHICAGO & NW RR, SN 056-0040)

Contract 60E79



**ELEVATION**  
Median Barrier

Hatched Area Indicates Concrete Removal



**SECTION**

Half Depth  
Barrier Repair  
See sheet 6 for more details

~ Concrete Removal (Cu Yd)	0.5
~ Concrete Structure (Cu Yd)	0.7

For Information Only

**TRAFFIC DATA:**

IL 31: SPEED LIMIT = 55 MPH  
2006 ADT = 32,600

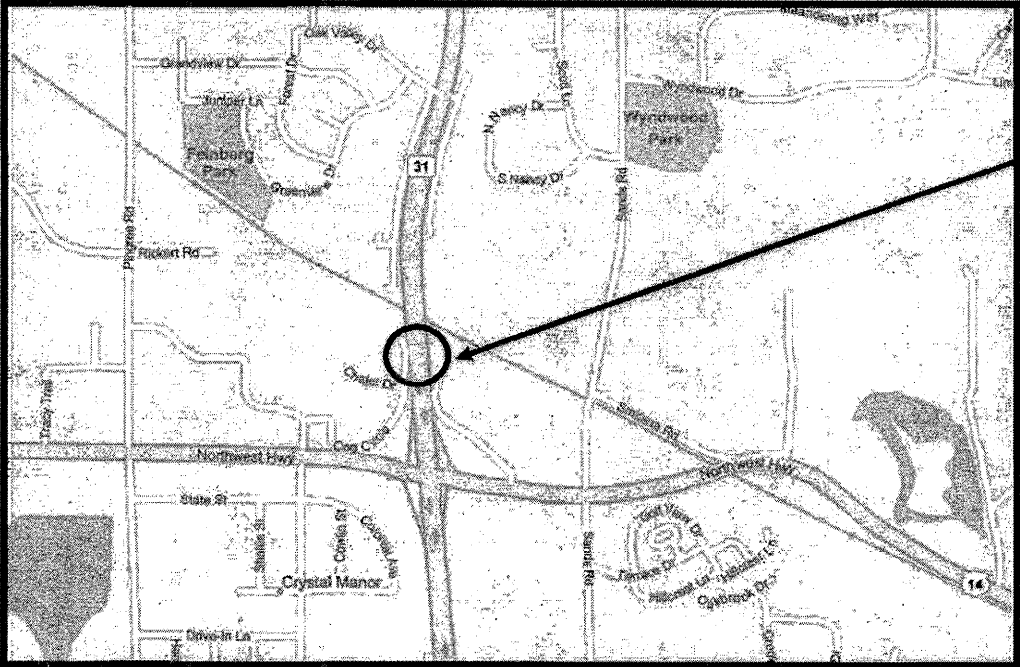
ILLINOIS DEPARTMENT OF TRANSPORTATION

LOCATION: 8  
IL 31 NORTH OF US 14

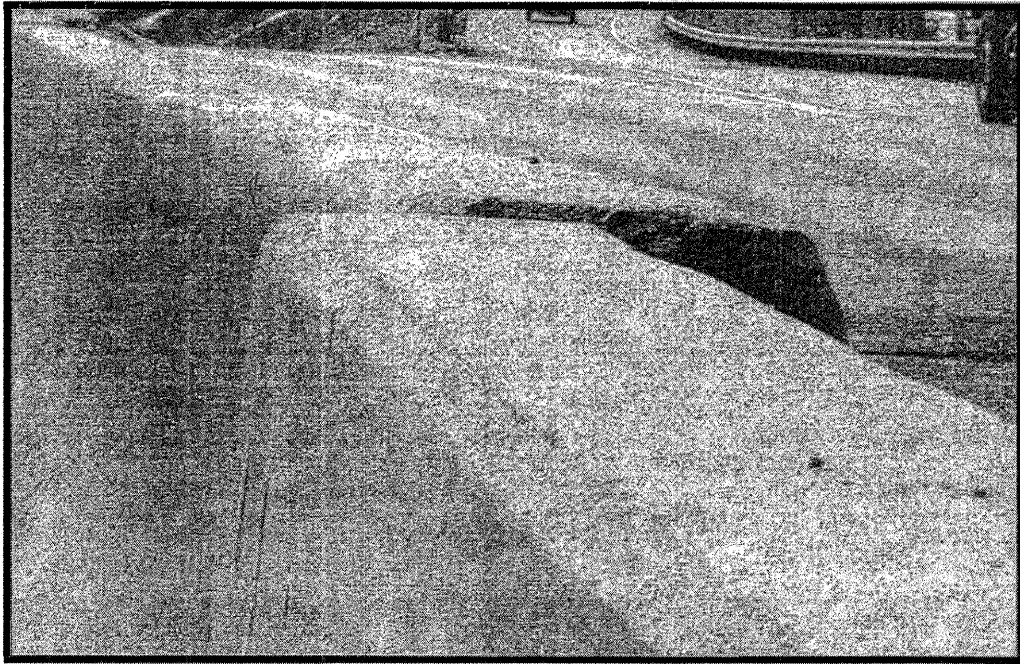


ROUTE	SECTION	COUNTY	TOTAL SHEETS	SHEET NUMBER
VARIOUS	2008-038 I	VARIOUS	20	19

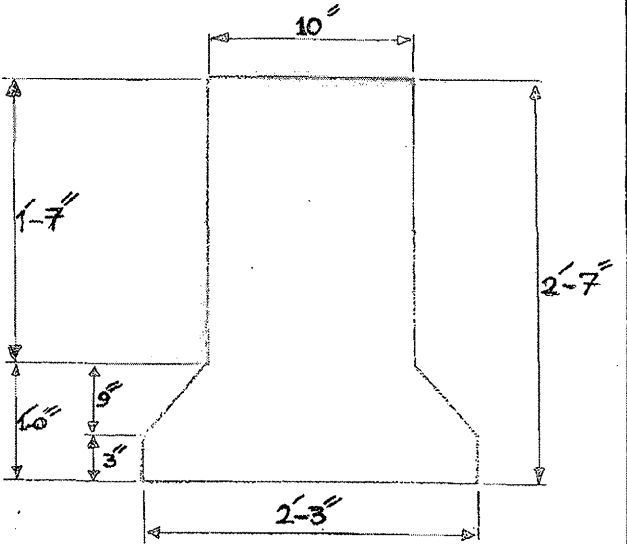
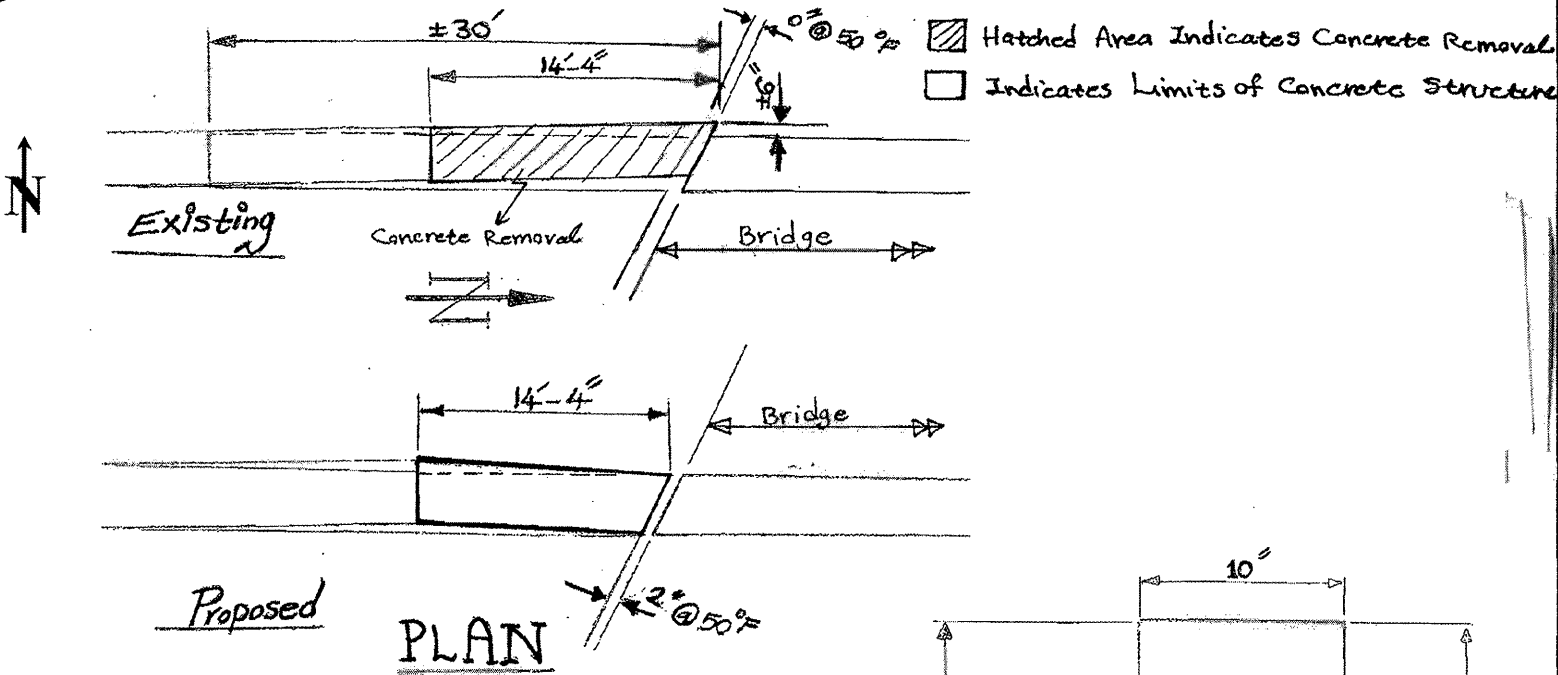
Contract 60E79



CITY OF CRYSTAL LAKE  
ALGONQUIN TOWNSHIP  
MC HENRY COUNTY



LOCATION 9: IL ROUTE 31, ¼ MILE NORTH OF US ROUTE 14 (AT S. ABUTMENT JT OF BRIDGE OVER CHICAGO & NW RR, SN 056-0040)



Full Depth  
Barrier Repair  
see sheet 5 for more details

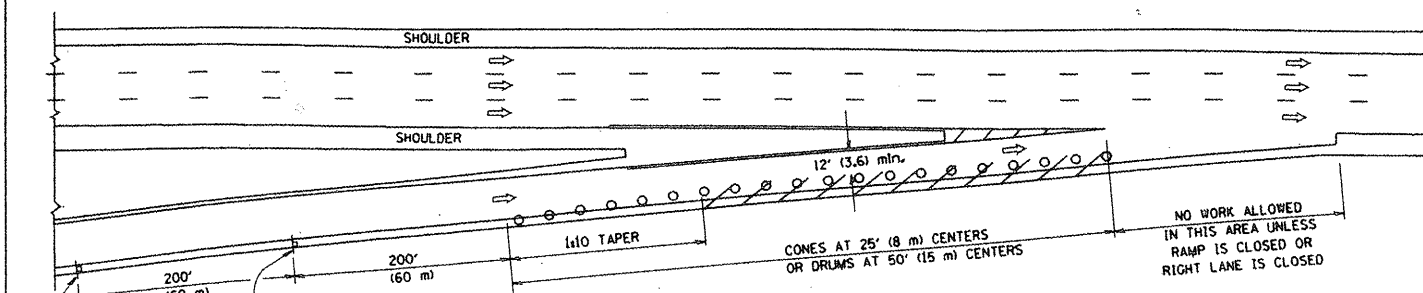
~ Concrete Removal (Cu Yd)	1.5
~ Concrete Structure (Cu Yd)	1.5
For Information Only	

TRAFFIC DATA:  
IL 31: SPEED LIMIT = 55 MPH  
2006 ADT = 32,600

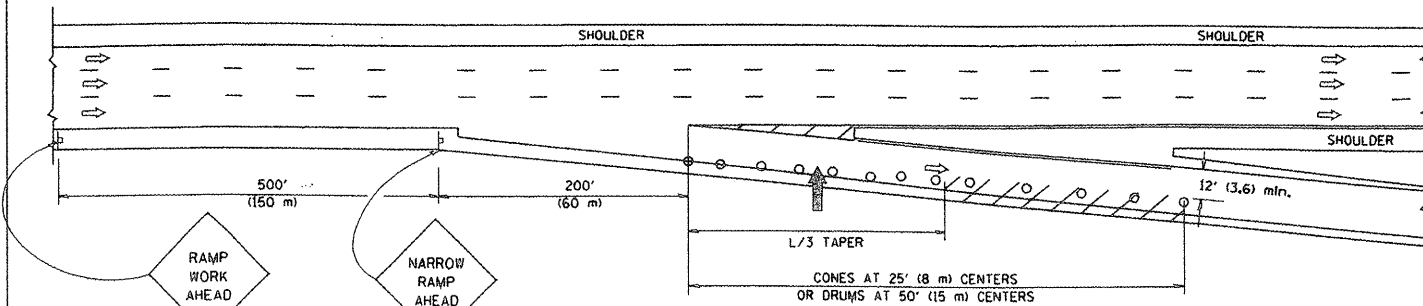
ILLINOIS DEPARTMENT OF TRANSPORTATION

LOCATION: 9  
IL 31 NORTH OF US 14

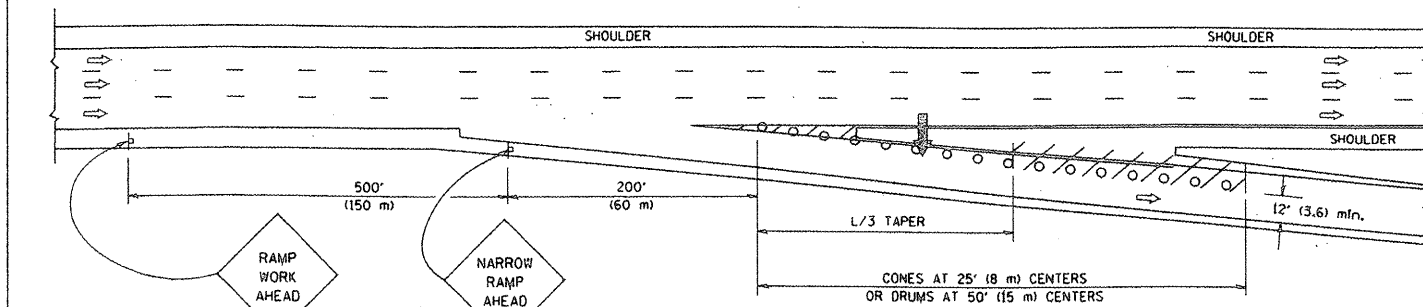
# PARTIAL RAMP CLOSURE DETAILS



TYPICAL ENTRANCE RAMP



TYPICAL EXIT RAMP



TYPICAL EXIT RAMP

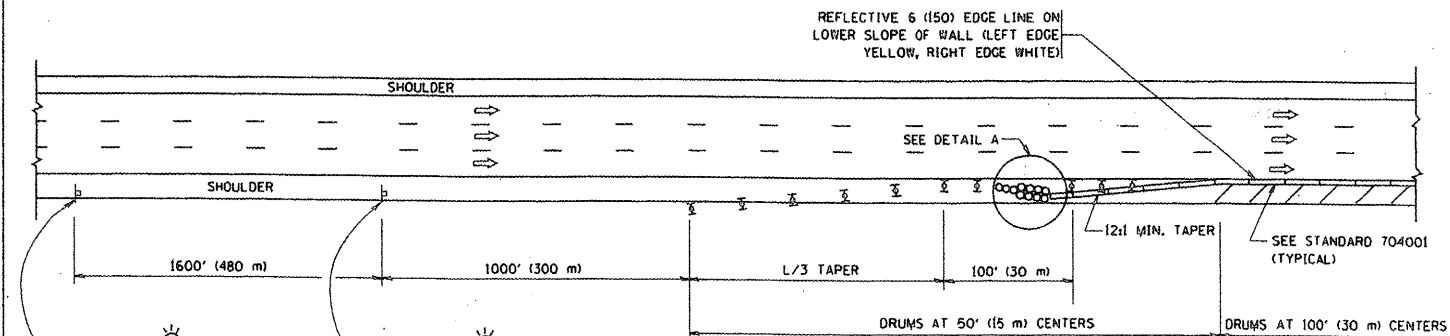
## SYMBOLS

- ARROWBOARD
- WORK AREA
- SIGN ON PORTABLE OR PERMANENT SUPPORT
- FLAGGER WITH CONTROL SIGN
- TYPE II BARRICADE, DRUM OR VERTICAL BARRICADE WITH STEADY BURN MONO-DIRECTIONAL LIGHT
- CONE, DRUM OR BARRICADE

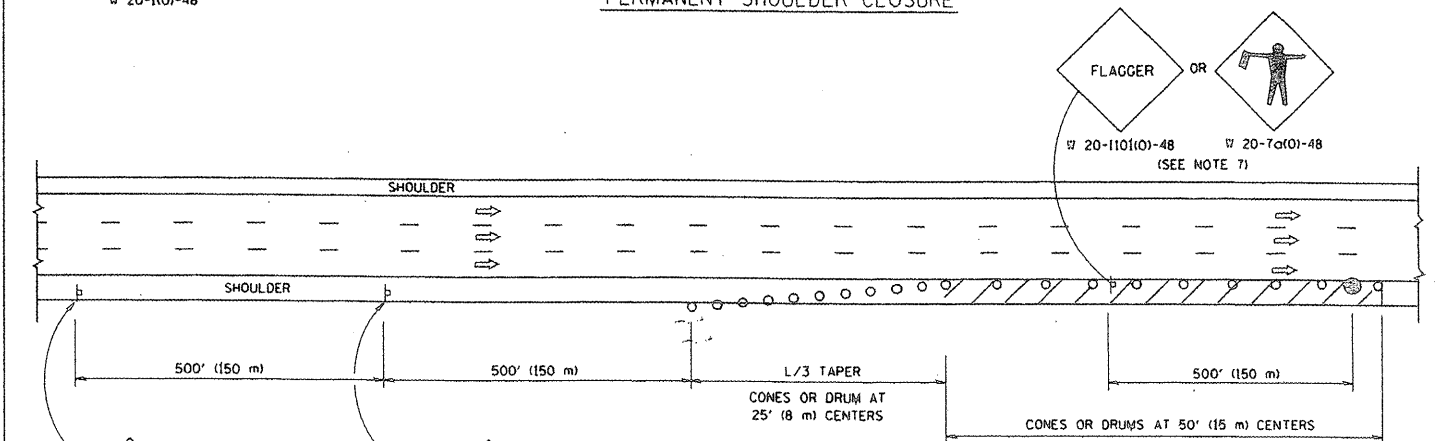
## GENERAL NOTES

- THE "L" DISTANCE EQUALS:  
SPEED LIMIT FORMULAS  
45 mph (80 km/h) METRIC ENGLISH  
OR GREATER:  $L = 0.65(WKS)$   $L = (WKS)$   
 $W$  = WIDTH OF OFFSET IN FEET (METERS)  
 $S$  = NORMAL POSTED SPEED MPH (KM/H)
- PLASTIC DRUMS WITH HIGH PERFORMANCE REFLECTIVE SHEETING AND STEADY BURNING LIGHTS ARE REQUIRED FOR ALL NIGHTTIME CLOSURES.
- ALL SIGNS SHALL BE POST MOUNTED IF THE CLOSURE TIME EXCEEDS FOUR DAYS.
- FLASHING LIGHTS SHALL BE USED DURING THE HOURS OF DARKNESS AND SHALL BE INSTALLED ABOVE THE FIRST TWO SETS OF SIGNS.

# SHOULDER CLOSURE DETAILS



PERMANENT SHOULDER CLOSURE



DAYTIME SHOULDER CLOSURE

- THIS DETAIL IS USED WHERE:
- VEHICLES, EQUIPMENT, WORKERS OR THEIR ACTIVITIES ENCOACH IN AN AREA CLOSER THAN 15' (4.5 m) TO THE EDGE OF PAVEMENT FOR A PERIOD IN EXCESS OF 15 MINUTES.

ARRAY DESIGN PER MANUFACTURER TO BE NCHRP 350 COMPLIANT FOR POSTED SPEED.

DETAIL "A"  
IMPACT ATTENUATOR, TEMPORARY  
(SEE NOTE 5)

ALL DIMENSIONS ARE IN INCHES (MILLIMETERS) UNLESS OTHERWISE SHOWN.

FILE NAME =  
W:\diststd\22x34\sc17.dgn

USER NAME = goglionobt  
PLOT SCALE = 50.0000' / IN.  
PLOT DATE = 1/4/2008

DESIGNED -  
DRAWN - D.W.S.  
CHECKED -  
DATE - 11-96

REVISED - J.A.F. 12-02  
REVISED - 04-03  
REVISED - J.A.F. 12-06  
REVISED - S.P.B. 01-07

STATE OF ILLINOIS  
DEPARTMENT OF TRANSPORTATION

TRAFFIC CONTROL DETAILS FOR FREEWAY  
SHOULDER CLOSURES AND PARTIAL RAMP CLOSURES

SCALE: NONE SHEET NO. 1 OF 1 SHEETS STA. TO STA.

F.A. SECTION COUNTY TOTAL SHEETS SHEET NO.  
2008-0332 VARIOUS 20 20  
TC-17 CONTRACT NO. 50E79  
FED. ROAD DIST. NO. 1 ILLINOIS FED. AID PROJECT