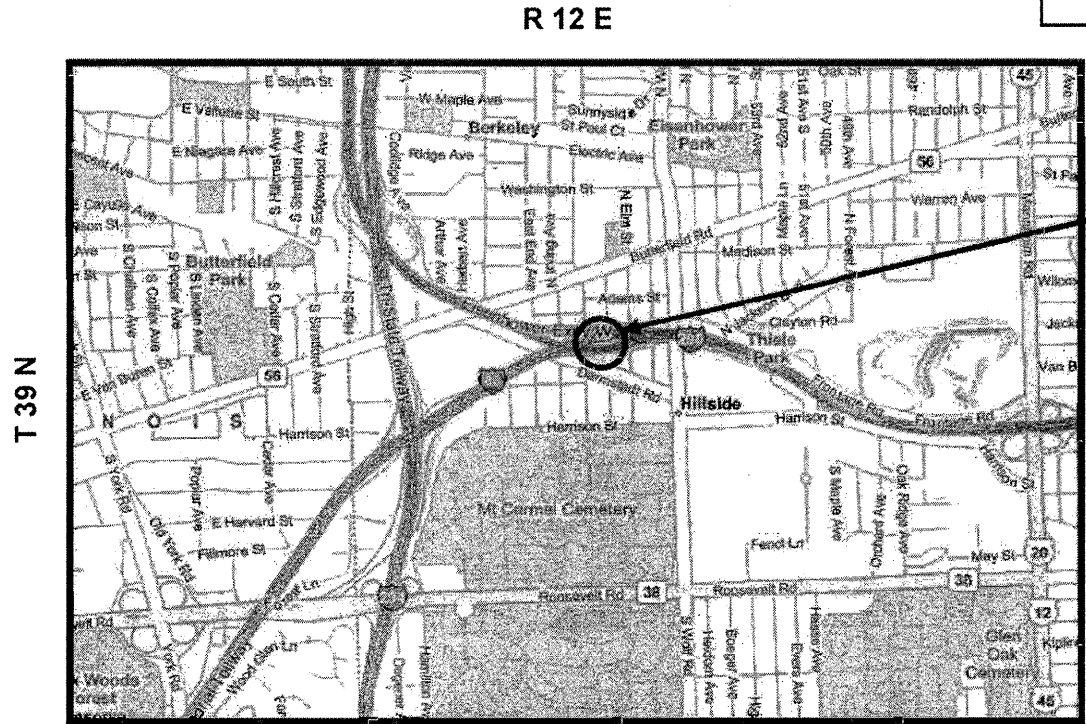
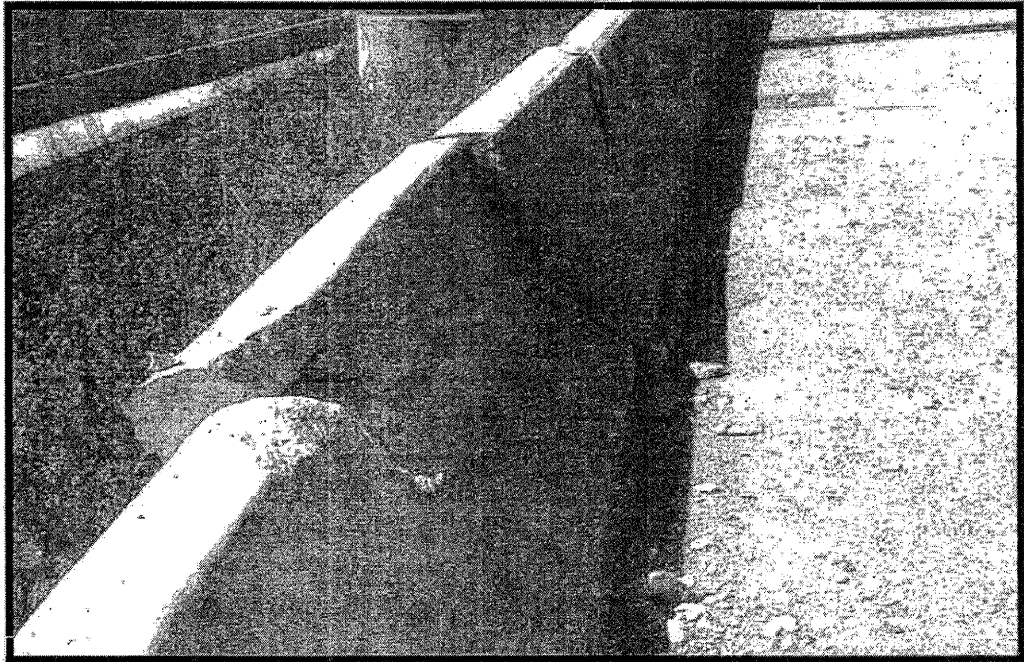


ROUTE	SECTION	COUNTY	TOTAL SHEETS	SHEET NUMBER
VARIOUS	2008-038 I	VARIOUS	20	17

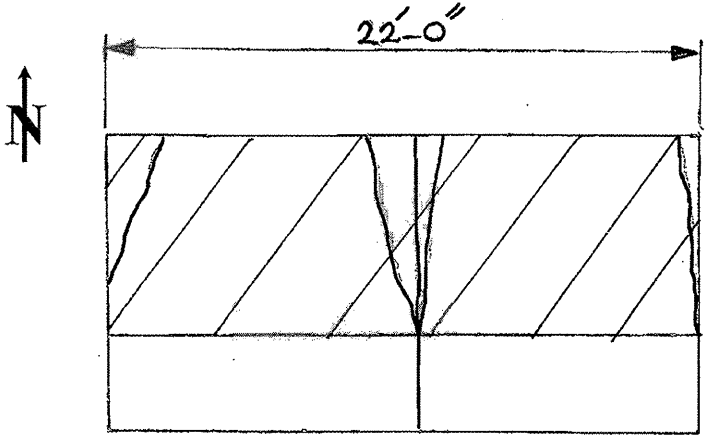
Contract 60E79



VILLAGE OF HILLSIDE
RIVERSIDE TOWNSHIP
COOK COUNTY

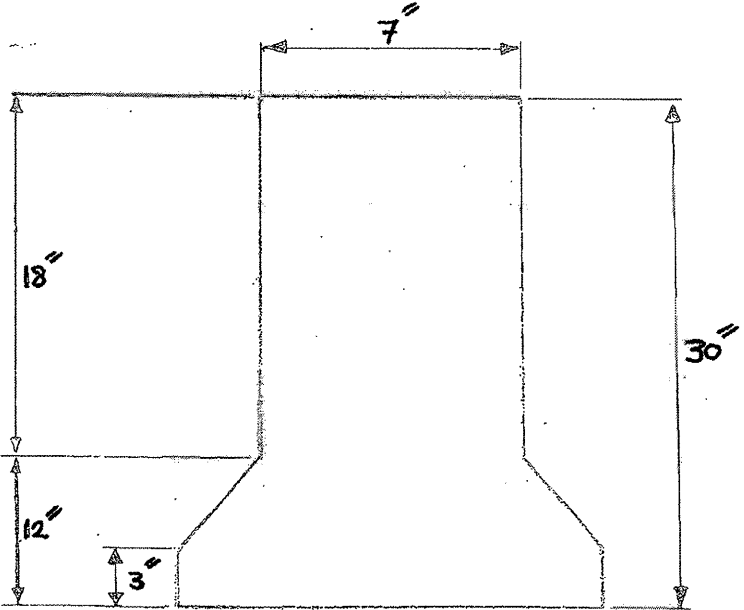


LOCATION 7: I-290 EB BETWEEN ENTRANCE RAMP FROM IL 56 (BUTTERFIELD RD.) AND EXIT RAMP TO N/SB MANNHEIM ROAD (EXIT #17); ON RIGHT SIDE OF RAMP. (EAST OF OVERHEAD SIGN BE33100, 25 FEET FROM LOCATION #6)



ELEVATION

Hatched Area Indicates Concrete Removal



SECTION

Half Depth
Barrier Repair
see sheet 6 for more details

~ Concrete Removal (Cu Yd)	0.7
~ Concrete Structure (Cu Yd)	0.7
For Information Only	

TRAFFIC DATA:
I-290: SPEED LIMIT = 55 MPH
2006 ADT = 104,900

ILLINOIS DEPARTMENT OF TRANSPORTATION

LOCATION: 7
I-290 @ IL 56