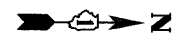
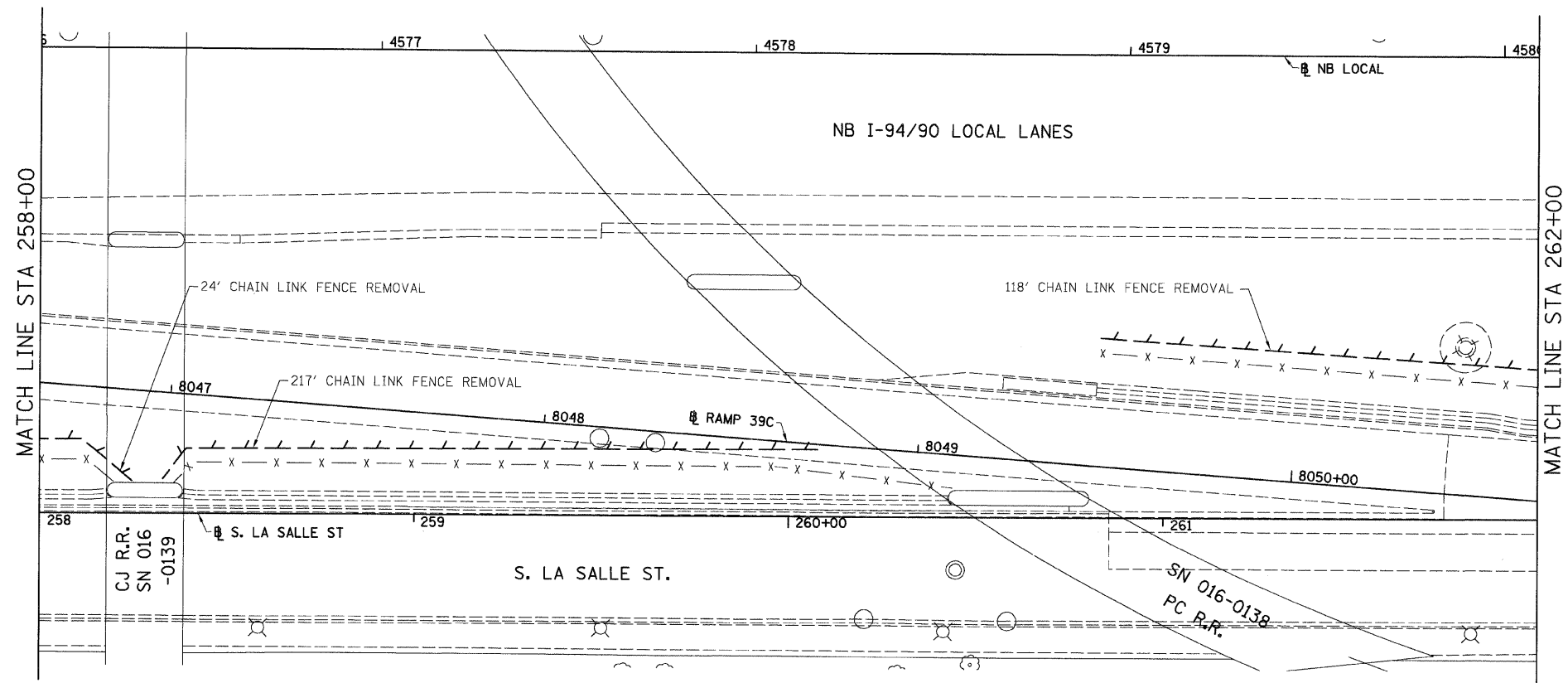


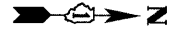
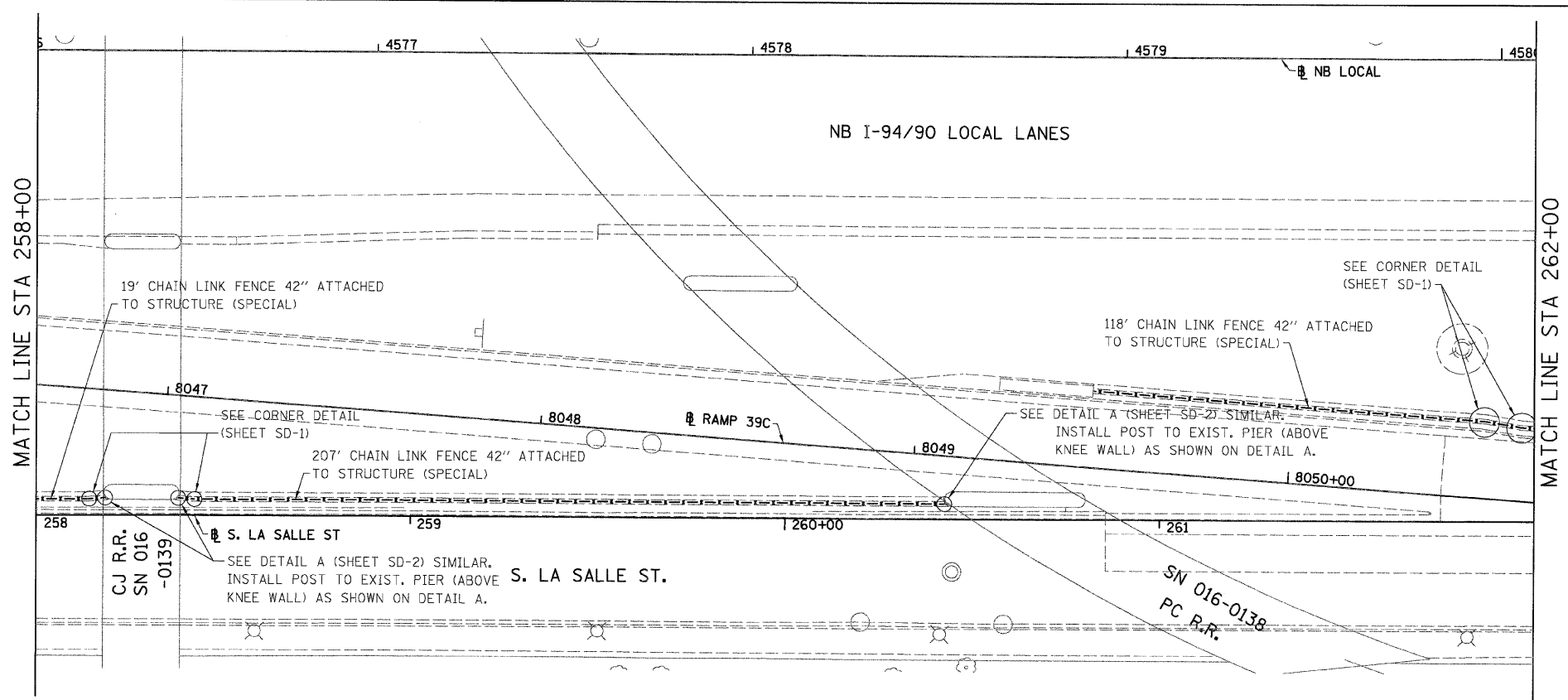
F.A.I.	SECTION	COUNTY	TOTAL SHEETS	SHEET NO.
94/90	2005-0331	COOK	37	20
STA.	TO STA.			
FED. ROAD DIST. NO.	ILLINOIS	FED. AID PROJECT		

60A04

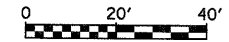


LEGEND:
 LINEAR REMOVALS

EXISTING CONDITIONS AND REMOVAL
 PROPOSED IMPROVEMENTS



NOTES:
 1. SEE DETAIL FOR CHAIN LINK FENCE, 42" ATTACHED TO STRUCTURE (SPECIAL).



PL-12

REVISIONS	
NAME	DATE
REVISED	11/5/08

ILLINOIS DEPARTMENT OF TRANSPORTATION
 F.A.I. 94/90 (DAN RYAN EXPRESSWAY)
 NORTHBOUND FENCE AND GATES (47TH ST TO 31ST ST)
**EXISTING AND PROPOSED
 FENCE PLANS**
 SCALE: 1"=20'
 DATE: 10/23/08
 DRAWN BY: JDC
 CHECKED BY: ODM

BOWMAN, BARRETT & ASSOCIATES INC.
 CONSULTING ENGINEERS
 Chicago, Illinois
 312.228.0100
 www.bbandainc.com



11/5/2008 5:59:27 PM