

STATE OF ILLINOIS
DEPARTMENT OF TRANSPORTATION
DIVISION OF HIGHWAYS

**PLANS FOR PROPOSED
FEDERAL AID HIGHWAY**

**F.A.I. ROUTE 90/94 (DAN RYAN EXPRESSWAY)
SECTION 2005-0331
NORTHBOUND FENCE AND GATES
(47TH ST TO 31ST ST)
COOK COUNTY
C-91-262-05**

INDEX OF SHEETS

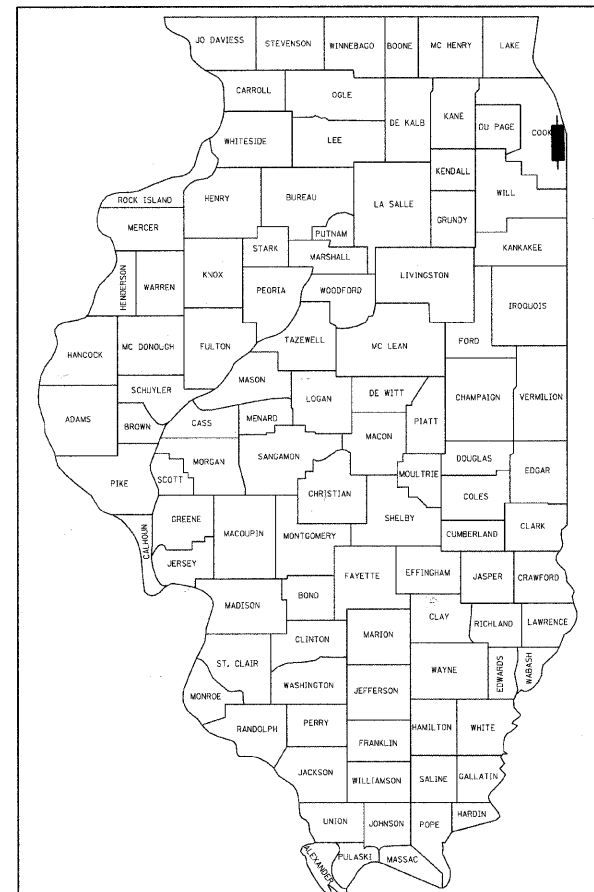
SHEET DESCRIPTION

- 1 COVER SHEET / INDEX / HIGHWAY STANDARDS
- 2 GENERAL NOTES
- 3 SUMMARY OF QUANTITIES
- 4-8 ALIGNMENT PLANS, SURVEY TIES AND CONTROL POINTS
- 9-32 EXISTING AND PROPOSED FENCE PLANS
- 33-34* STRUCTURAL DETAILS
- 35 TC-10 DISTRICT 1, TRAFFIC CONTROL AND PROTECTION FOR SIDE ROADS, INTERSECTIONS & DRIVEWAYS
- 36 TC-17 DISTRICT 1, TRAFFIC CONTROL DETAILS FOR FREEWAY SHOULDER CLOSURES PARTIAL RAMP CLOSURES
- 37 TC-22 DISTRICT 1, ARTERIAL ROAD INFORMATION SIGN

IDOT HIGHWAY STANDARDS

STANDARD DESCRIPTION

- 000001-05 STANDARD SYMBOLS, ABBREVIATIONS, AND PATTERNS
- 001006 DECIMAL OF AN INCH AND OF A FOOT
- 664001-02 CHAIN LINK FENCE
- 701601-06 URBAN LANE CLOSURE, MULTILANE, 1W OR 2W WITH NONTRAVERSABLE MEDIAN
- 701701-06 URBAN LANE CLOSURE, MULTILANE INTERSECTION
- 701801-04 LANE CLOSURE, MULTILANE, 1W OR 2W, CROSSWALK OR SIDEWALK CLOSURE
- 701901-01 TRAFFIC CONTROL DEVICES



LOCATION OF SECTION INDICATED THUS: - [Symbol] -

STATE OF ILLINOIS
DEPARTMENT OF TRANSPORTATION
DIVISION OF HIGHWAYS

SUBMITTED October 23, 2008

Diana M. O'Keefe
DEPUTY DIRECTOR OF HIGHWAYS, REGION ENGINEER
December 5, 2008

Eric E. Horn
INTERIM ENGINEER OF DESIGN AND ENVIRONMENT
December 5, 2008

Christine M. Reed
DIRECTOR OF HIGHWAYS, CHIEF ENGINEER

**PRINTED BY THE AUTHORITY
OF THE STATE OF ILLINOIS**

BOWMAN, BARRETT & ASSOCIATES INC.
CONSULTING ENGINEERS
Chicago, Illinois
312.228.0100
www.bbainc.com

PROJECT LOCATED IN CITY OF CHICAGO

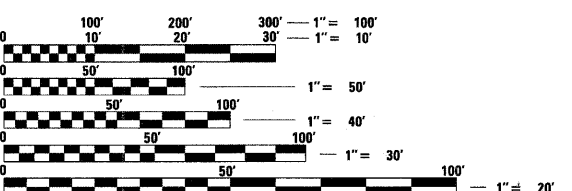
DESIGN DESIGNATION

LA SALLE ST: 8275 (20) URBAN COLLECTOR

| FRONTAGE ROAD: | ADT (2020) | DESIGN SPEED | POSTED SPEED |
|----------------|------------|--------------|--------------|
| LA SALLE ST | 15,000 | 30 | 25 |

DESIGN NUMBER

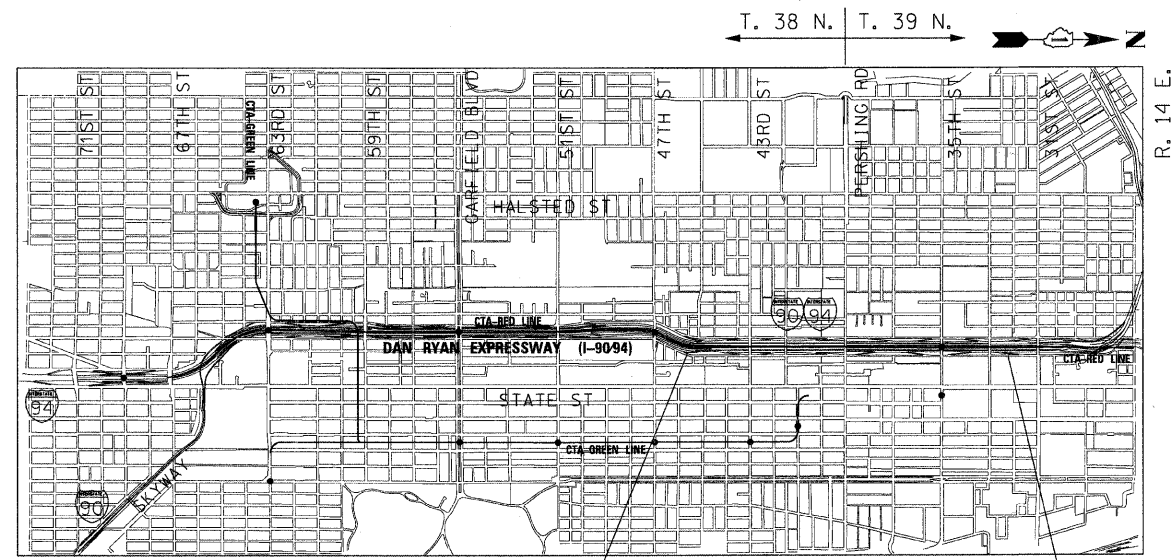
D-91-417-01



FULL SIZE PLANS HAVE BEEN PREPARED USING STANDARD ENGINEERING SCALES. REDUCED SIZED PLANS WILL NOT CONFORM TO STANDARD SCALES. IN MAKING MEASUREMENTS ON REDUCED PLANS, THE ABOVE SCALES MAY BE USED.

BEFORE EXCAVATING CALL:
CHICAGO UTILITY ALERT NETWORK
(312) 744-7000

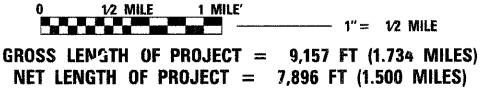
CONTRACT NO. 60A04



**PROJECT BEGINS
NB LASALLE
STA 215+91**

**PROJECT ENDS
NB LASALLE
STA 442+82**

LOCATION MAP



DEWITT D. MOSES
062-057576
REGISTERED PROFESSIONAL ENGINEER OF ILLINOIS

SIGNATURE *[Signature]*
DATE Oct. 21, 2008
EXPIRES Nov. 30, 2009

JOHN D. COLMERY
062-050863
REGISTERED PROFESSIONAL ENGINEER OF ILLINOIS

SIGNATURE *[Signature]*
DATE Oct. 21, 2008
EXPIRES Nov. 30, 2009

BRIAN L. UMBRIGHT
081-005584
LICENSED STRUCTURAL ENGINEER & ARCHITECT STATE OF ILLINOIS

SIGNATURE *[Signature]*
DATE Oct. 21, 2008
EXPIRES Nov. 30, 2010

DISTRICT ONE DESIGN/CONSULTANT SERVICES PROJECT MANAGER
RAJENDRA SHAH (847) 705-4555

N:\660\cadd\civil\36\36 SHEETS\660_36CDD\FE6.dgn